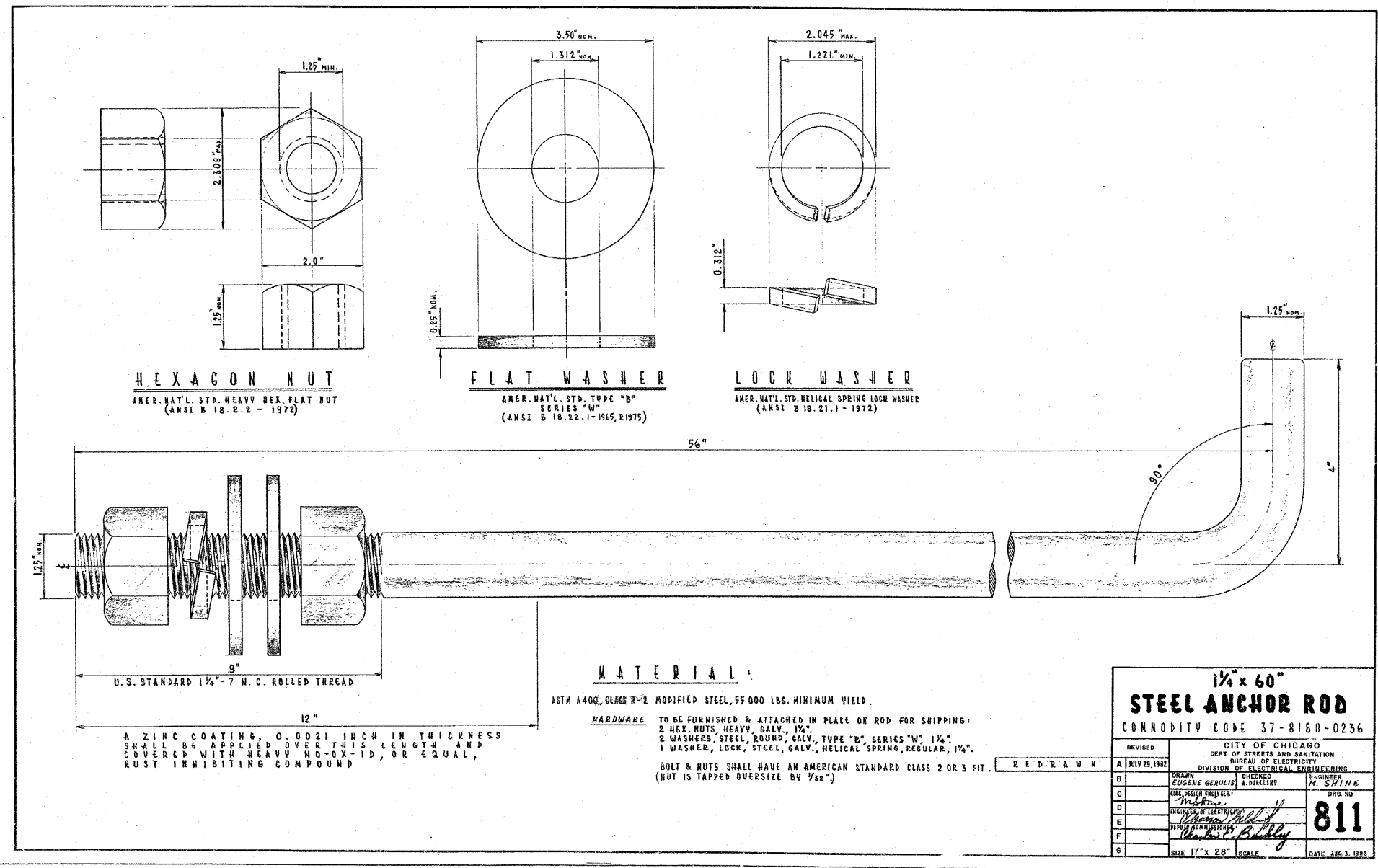


F.A.I. RTE.	SECTION	COUNTY	TOTAL SHEETS	SHEET NO.
90/94		COOK	45	30
STA.		TO STA.		
FED. ROAD DIST. NO. 1		ILLINOIS FED. AID PROJECT		
*(1818, 1919, 1919.15) 1-11		62983		

NOTES:
 1. THIS IS A STANDARD DRAWING MADE BY THE CITY OF CHICAGO, DEPARTMENT OF STREETS AND SANITATION, BUREAU OF ELECTRICITY. THIS DRAWING IS INCLUDED FOR THE CONVENIENCE OF THE CONTRACTOR.



HEXAGON NUT
 AMER. NAT'L. STD. HEAVY HEX. FLAT NUT
 (ANSI B 18.2.2 - 1972)

FLAT WASHER
 AMER. NAT'L. STD. TYPE "B" SERIES "W"
 (ANSI B 18.22.1-1965, R1975)

LOCK WASHER
 AMER. NAT'L. STD. HELICAL SPRING LOCK WASHER
 (ANSI B 18.21.1 - 1972)

MATERIAL:

ASTM A400, GRADE X-2 MODIFIED STEEL, 55 000 LBS. MINIMUM YIELD.

HARDWARE TO BE FURNISHED & ATTACHED IN PLACE ON ROD FOR SHIPPING:
 2 HEX. NUTS, HEAVY, GALV., 1/4"
 2 WASHERS, STEEL, ROUND, GALV., TYPE "B", SERIES "W", 1/4"
 1 WASHER, LOCK, STEEL, GALV., HELICAL SPRING, REGULAR, 1/4"
 BOLT & NUTS SHALL HAVE AN AMERICAN STANDARD CLASS 2 OR 3 FIT.
 (NUT IS TAPPED OVERSIZE BY 1/32")

A ZINC COATING, 0.0021 INCH IN THICKNESS SHALL BE APPLIED OVER THIS LENGTH AND COVERED WITH HEAVY NO-OX-ID, OR EQUAL, RUST INHIBITING COMPOUND

1/4" x 60"
STEEL ANCHOR ROD
 COMMODITY CODE 37-8180-0236

REVISED	CITY OF CHICAGO DEPT. OF STREETS AND SANITATION BUREAU OF ELECTRICITY DIVISION OF ELECTRICAL ENGINEERING	
A	JULY 25, 1982	FORWARD BY EUGENE GERULIS
B		CHECKED BY M. SWINE
C		DESIGNED BY M. SWINE
D		DATE 8/11/82
E		811
F		DATE AUG. 3, 1982
G		SIZE 17" x 28" SCALE

AECOM

REVISIONS	
NAME	DATE

ILLINOIS DEPARTMENT OF TRANSPORTATION
 F.A.I. 90/94 (DAN RYAN EXPRESSWAY)
 71ST ST TO 63RD ST (NORTHBOUND KNEE WALLS)

STANDARD BOE DETAILS

SCALE: NOT TO SCALE
 DATE: JANUARY 14, 2009

DRAWN BY: HAR
 CHECKED BY: JPC