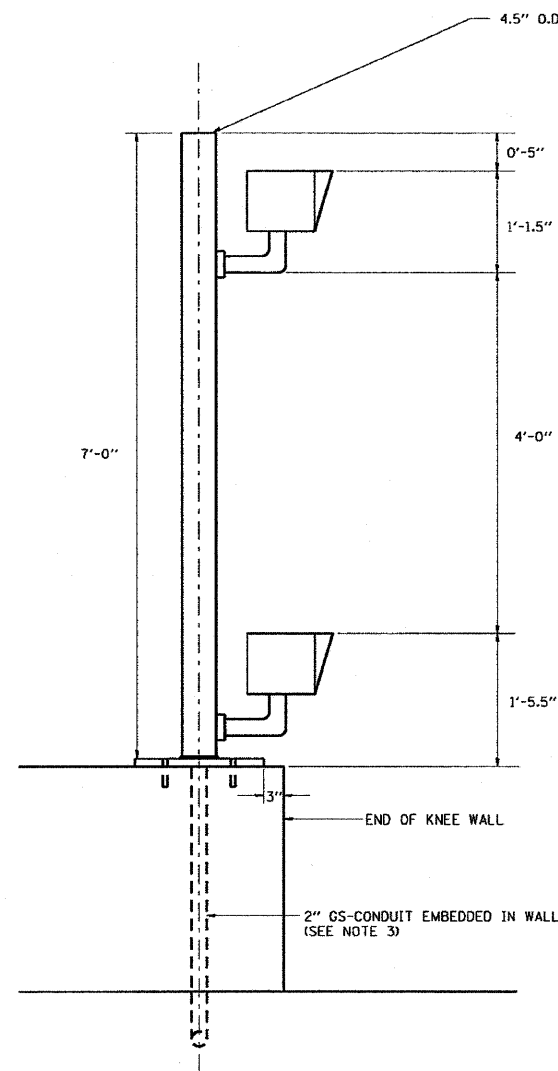


F.A.I. RTE.	SECTION	COUNTY	TOTAL SHEETS	SHEET NO.
90/94		COOK	31	23
STA.	TO STA.			
FED. ROAD DIST. NO. 1 (ILLINOIS) FED. AID PROJECT				
*(1818, 1918, 1919.15) 1-12			62984	

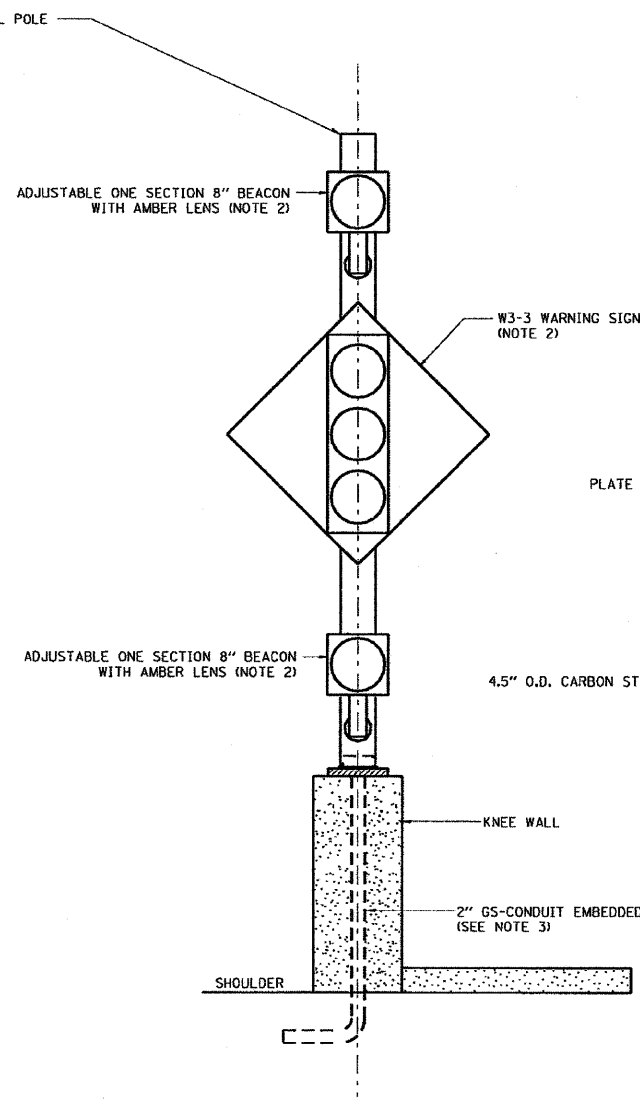
NOTES:

1. SEE STRUCTURAL DETAILS FOR CONDUIT IN KNEE WALL INSTALLATION DETAILS.
2. BEACONS AND WARNING SIGN FROM EXISTING WOOD POST ARE TO BE REINSTALLED ON THE NEW STEEL POLE AND WIRED BACK TO THE SURVEILLANCE CABINET AS SHOWN ON THE PLAN DRAWINGS. (WORK BY MEADE ELECTRIC IN CONTRACT 62583).
3. COORDINATE INSTALLATION OF CONDUIT IN WALL WITH CONTRACT 62583.

1

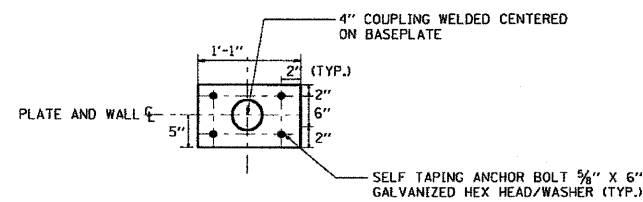


SIDE VIEW

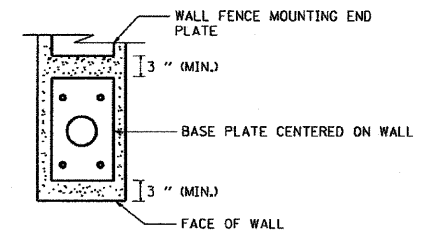


FRONT VIEW

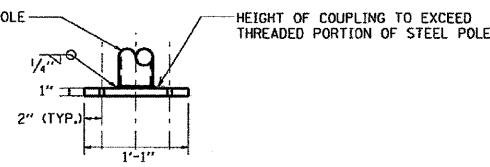
FLASHER POST ON KNEE WALL



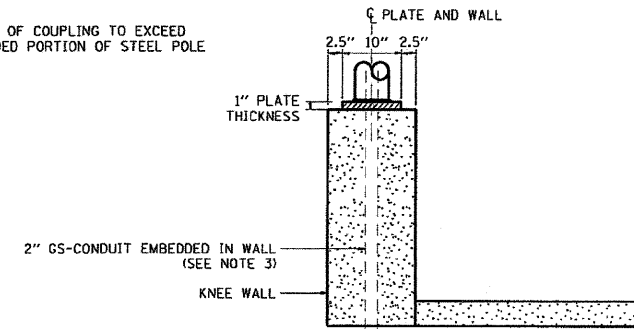
TOP VIEW (BASE PLATE)



TOP VIEW (BASE PLATE ON WALL)



SIDE VIEW (BASE PLATE)



FRONT VIEW (BASE PLATE ON WALL)

AECOM

DT-35A

REVISIONS	
NAME	DATE
REVISION 1	7/21/09

ILLINOIS DEPARTMENT OF TRANSPORTATION
F.A.I. 90/94 (DAN RYAN EXPRESSWAY)
71ST ST TO 63RD ST (SOUTHBOUND KNEE WALLS)

RAMP METER FLASHER
ON KNEE WALL DETAIL

SCALE: NOT TO SCALE DRAWN BY: HR
DATE: JANUARY 14, 2009 CHECKED BY: JPC

3/27/2009 3:06:41 PM