



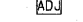


F.A.I. RTE.	SECTION	COUNTY	TOTAL SHEETS	SHEET NO.
90/94		COOK	31	19
STA. 7105+00		TO STA. 7109+75		
FED. ROAD DIST. NO. 1		ILLINOIS FED. AID PROJECT		
*(1818, 1919, 1919.15) 1-12				62984

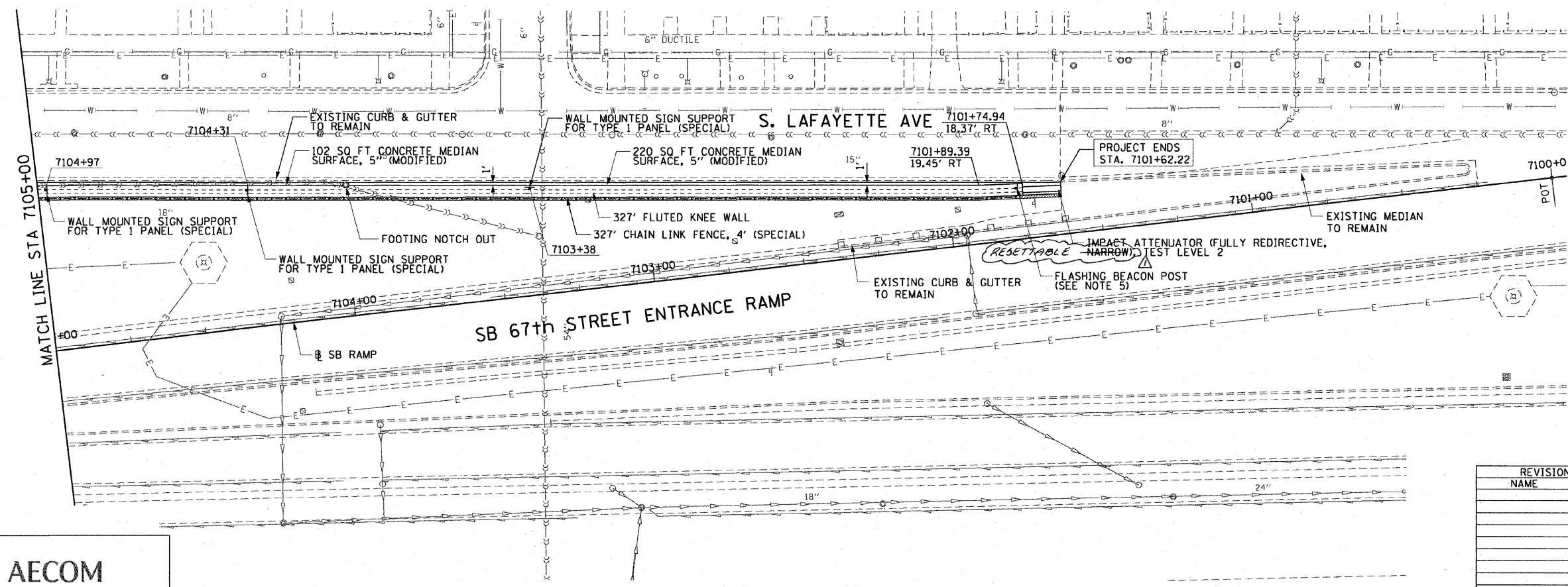
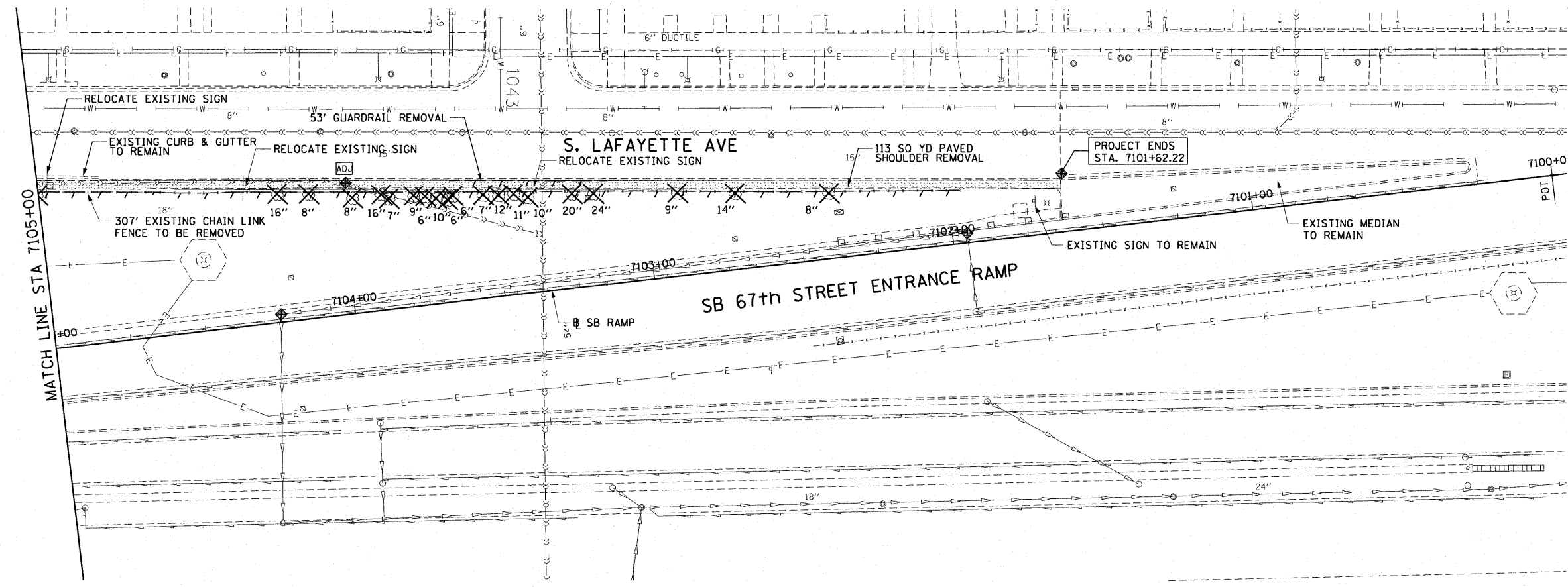
LEGEND:

-  AREA REMOVALS
-  LINEAR REMOVALS
-  TREE REMOVAL (WITH SIZE)
-  INLET FILTER
-  FRAMES AND LIDS TO BE ADJUSTED

EXISTING CONDITIONS AND REMOVAL
PROPOSED IMPROVEMENTS

NOTES:

1. SEE STRUCTURAL DETAILS FOR FLUTED KNEE WALL DETAILS.
2. ALL POINT CALLOUTS ARE TAKEN AT THE EDGE OF THE KNEE WALL BASE.
3. SEE ROADWAY DETAILS FOR CONCRETE MEDIAN AND CONCRETE CURB DETAILS.
4. FOR FLUTED KNEE WALL FOOTING NOTCH OUTS, SEE STRUCTURAL DETAILS.
5. SEE ELECTRICAL PLANS FOR LOCATION OF FLASHING BEACON POST.



AECOM

REVISIONS	
NAME	DATE

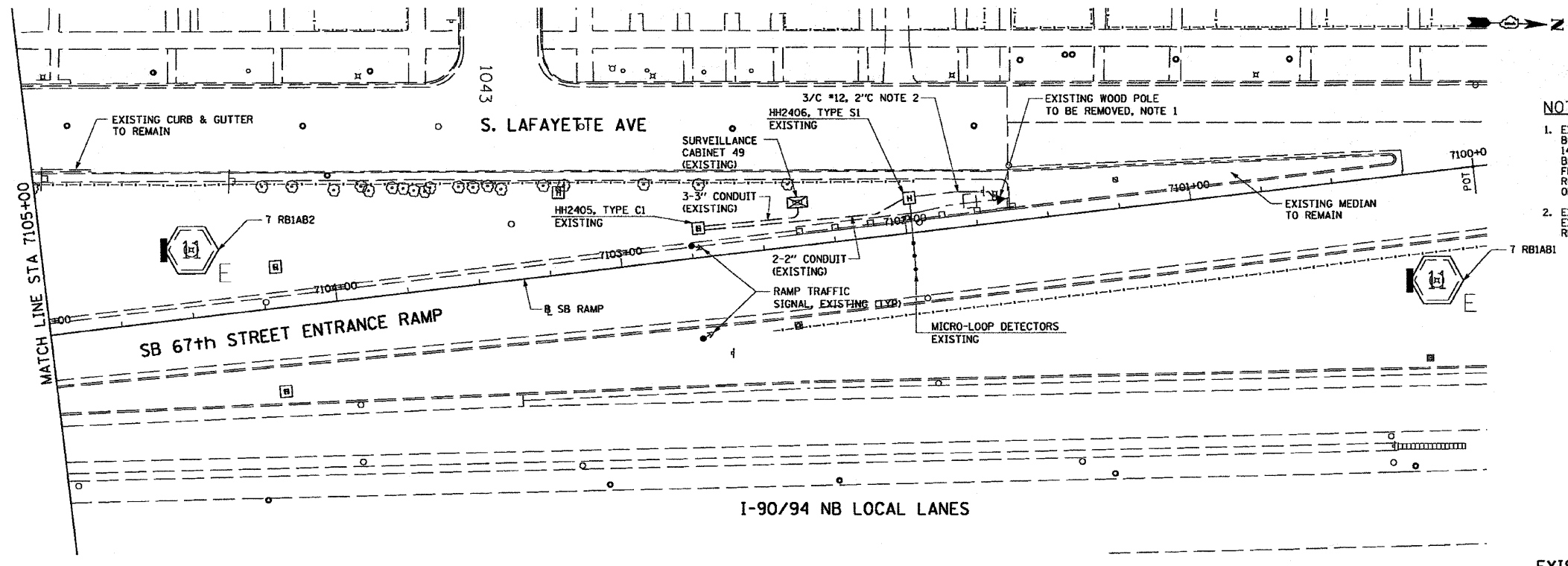
ILLINOIS DEPARTMENT OF TRANSPORTATION
F.A.I. 90/94 (DAN RYAN EXPRESSWAY)
71ST ST TO 63RD ST (SOUTHBOUND KNEE WALLS)
EXISTING AND PROPOSED ROADWAY PLANS

SCALE: 1"=20'
DATE: JANUARY 14, 2009
DRAWN BY: NJH
CHECKED BY: RMC

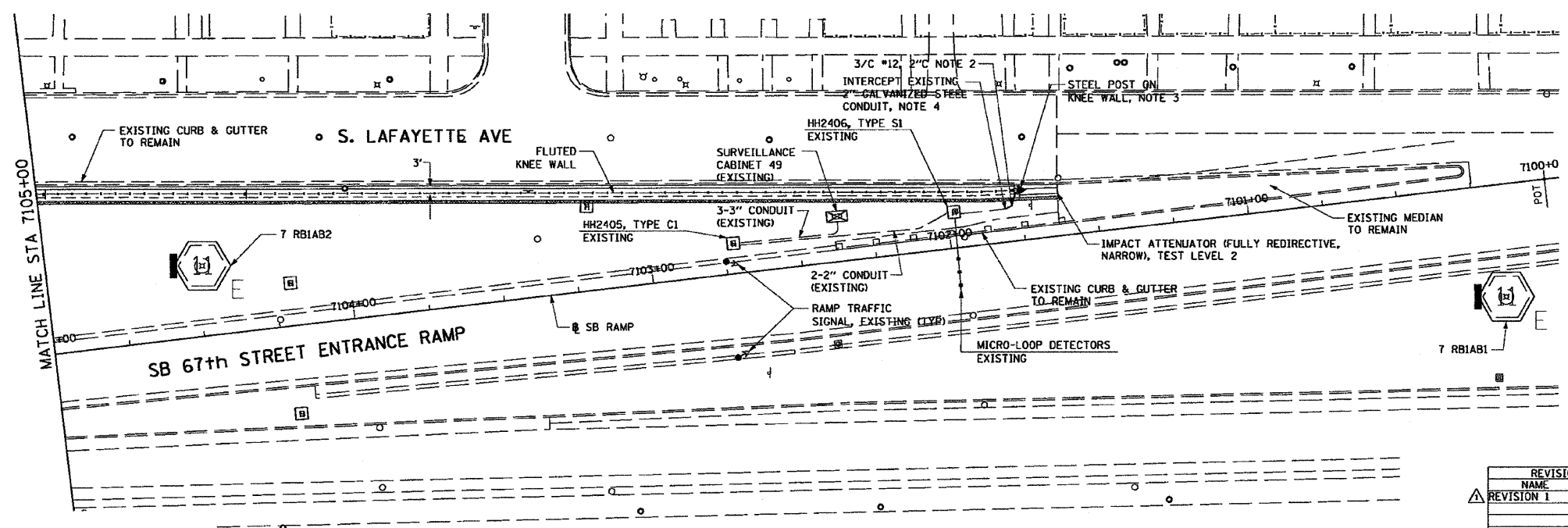
V:\schg\1207\p40466\p40466.ctb\128-knee-wall-fence.spl Contract 27 b\p271004201.dwg 2/23/09 PM

1

F.A.I. SECTION	COUNTY	TOTAL SHEETS	SHEET NO.
90/94	COOK	31	22
STA. 7105+00 TO STA. 7109+75			
FED. ROAD DIST. NO. 1 ILLINOIS		FED. AID PROJECT	
*1818, 1919, 1919.151		1-12	
			62984



- NOTES:**
- EXISTING WOOD POST TO BE REMOVED. EXISTING BURIED CONDUIT TO BE REMOVED A MINIMUM 14 FEET BACK. FOR EXTENSION TO THE NEW BEACON MOUNTED ON THE WALL. EXISTING FLASHING BEACONS AND WARNING SIGN TO BE REMOVED FROM WOOD POST AND BE INSTALLED ON NEW STEEL POLE.
 - EXISTING 3/C #12 TO BE PULLED BACK TO EXISTING SURVEILLANCE CABINET 49 AND REMOVED.



**EXISTING CONDITIONS AND REMOVAL
PROPOSED IMPROVEMENTS**



- NOTES:**
- NEW STEEL POLE TO BE INSTALLED AT END OF NEW KNEE WALL. EXISTING FLASHING BEACONS AND WARNING SIGN REMOVED FROM WOOD POST ARE TO BE INSTALLED ON NEW STEEL POLE. SEE DRAWING DT-35A FOR DETAILS.
 - EXISTING 2" GSC TO BE REROUTED TO NEW STEEL POLE BASE ON TOP OF NEW KNEE WALL. NEW 2" GSC CONDUIT TO BE INSTALLED AS NEEDED TO FACILITATE CONNECTION BETWEEN NEW POLE AND HANDHOLE HH2405. NEW 3/C #12 CABLE TO BE INSTALLED AND CONNECTED TO BEACONS AND EXISTING CABINET 49. SEE STRUCTURAL DETAILS AND DRAWING DT-35A FOR CONDUIT DETAILS.

FOR INFORMATION ONLY
ALL ELECTRICAL WORK SHOWN ON THIS SHEET WILL BE DONE BY MEADE ELECTRIC UNDER CONTRACT 62583.



AECOM

REVISIONS	
NAME	DATE
REVISION 1	7/21/09

ILLINOIS DEPARTMENT OF TRANSPORTATION
F.A.I. 90/94 (DAN RYAN EXPRESSWAY)
71ST ST TO 63RD ST (SOUTHBOUND KNEE WALLS)

ELECTRICAL PLAN

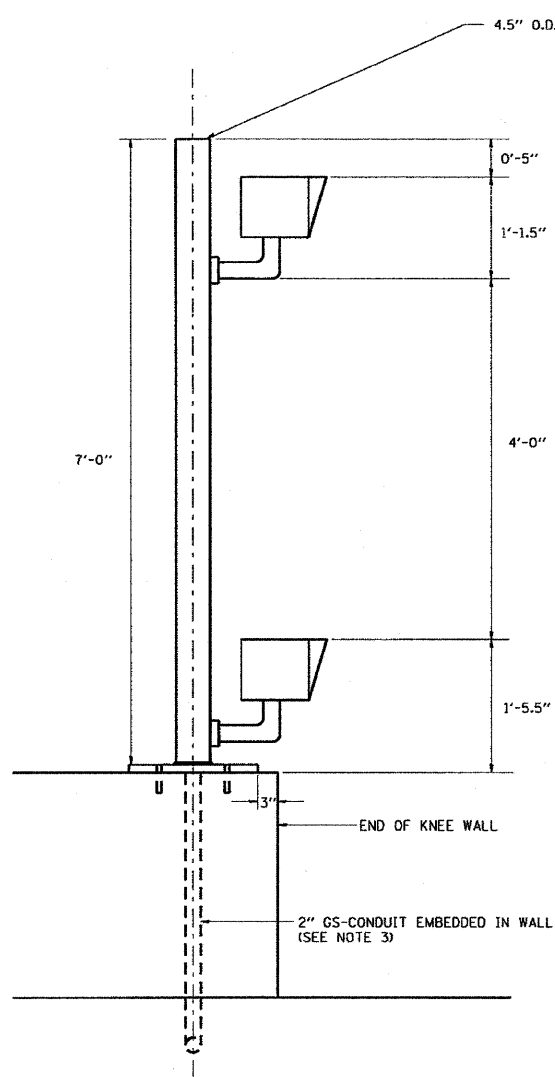
SCALE: 1"=20'
DATE: JANUARY 14, 2009
DRAWN BY: JCM
CHECKED BY: JPC

F.A.I. RTE.	SECTION	COUNTY	TOTAL SHEETS	SHEET NO.
90/94		COOK	31	23
STA.	TO STA.			
FED. ROAD DIST. NO. 1 (ILLINOIS) FED. AID PROJECT				
*1818, 1918, 1919.15) 1-12			62984	

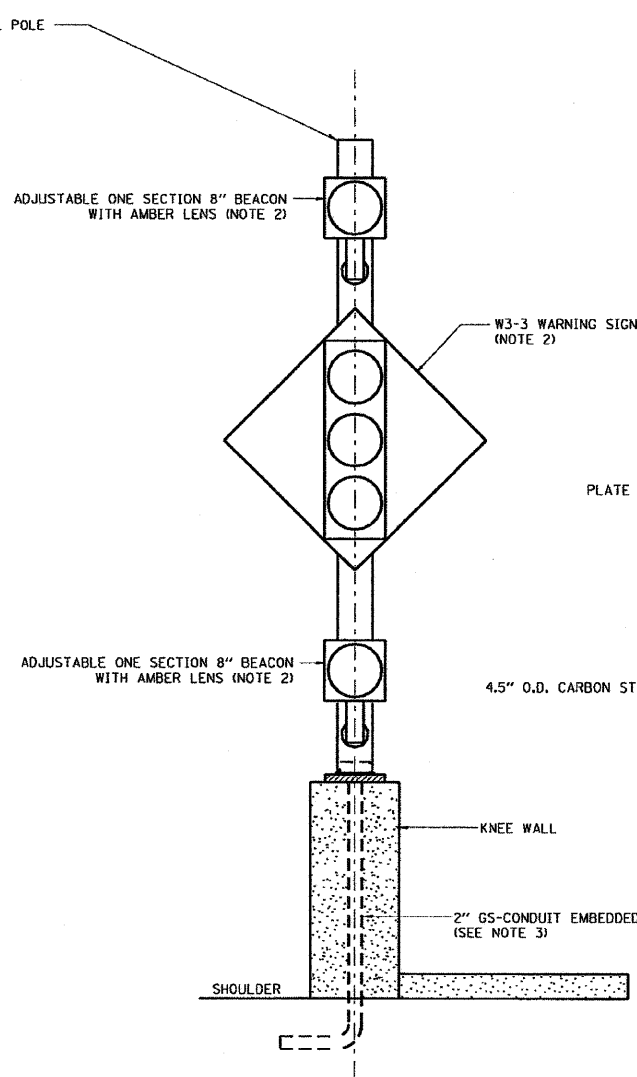
NOTES:

1. SEE STRUCTURAL DETAILS FOR CONDUIT IN KNEE WALL INSTALLATION DETAILS.
2. BEACONS AND WARNING SIGN FROM EXISTING WOOD POST ARE TO BE REINSTALLED ON THE NEW STEEL POLE AND WIRED BACK TO THE SURVEILLANCE CABINET AS SHOWN ON THE PLAN DRAWINGS. (WORK BY MEADE ELECTRIC IN CONTRACT 62583).
3. COORDINATE INSTALLATION OF CONDUIT IN WALL WITH CONTRACT 62583.

1

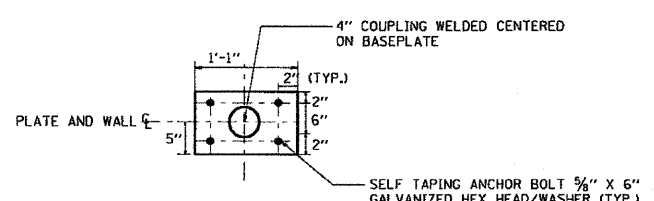


SIDE VIEW

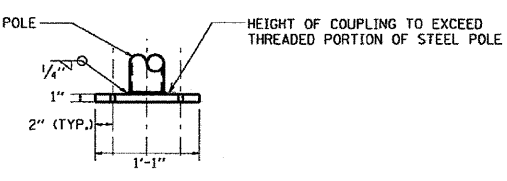


FRONT VIEW

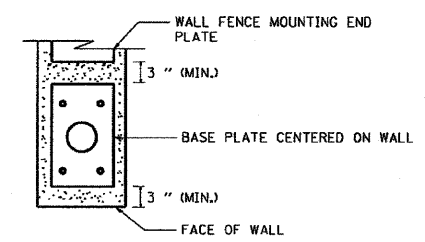
FLASHER POST ON KNEE WALL



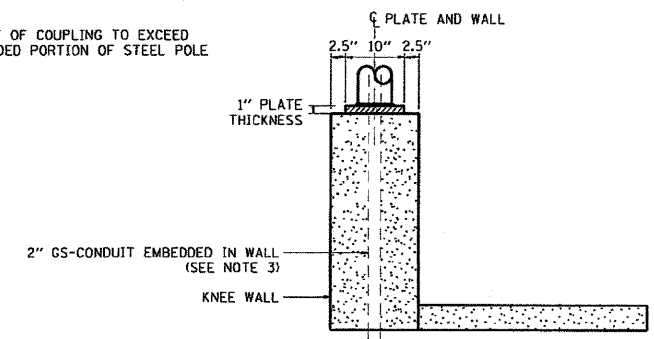
TOP VIEW (BASE PLATE)



SIDE VIEW (BASE PLATE)



TOP VIEW (BASE PLATE ON WALL)



FRONT VIEW (BASE PLATE ON WALL)

AECOM

DT-35A

REVISIONS	
NAME	DATE
REVISION 1	7/21/09

ILLINOIS DEPARTMENT OF TRANSPORTATION
F.A.I. 90/94 (DAN RYAN EXPRESSWAY)
71ST ST TO 63RD ST (SOUTHBOUND KNEE WALLS)

RAMP METER FLASHER
ON KNEE WALL DETAIL

SCALE: NOT TO SCALE
DATE: JANUARY 14, 2009
DRAWN BY: HR
CHECKED BY: JPC

3/27/2009 3:06:11 PM