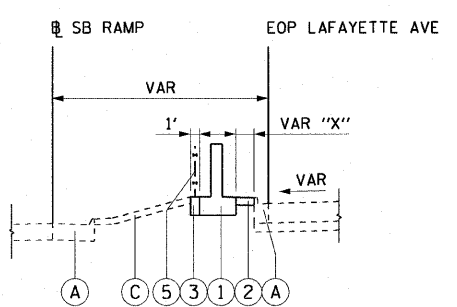
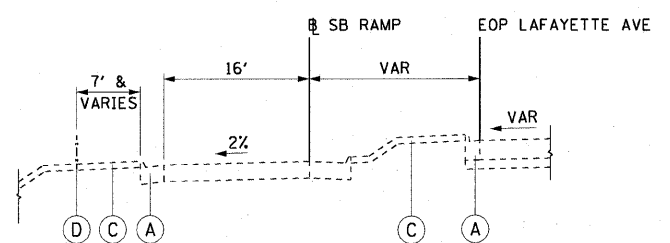


① EX TYPICAL SECTION SB RAMP  
STA 7101+62.22 TO STA 7109+34.41

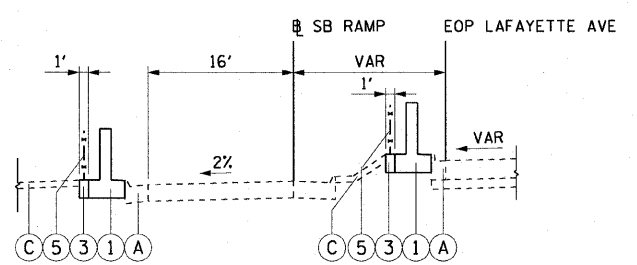


① PR TYPICAL SECTION SB RAMP  
STA 7101+62.22 TO STA 7109+34.41  
"X" STATION RANGE

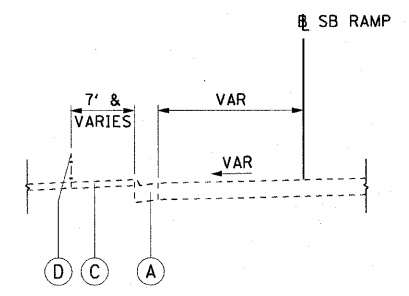
0'	7101+62.22 TO 7101+74.94
0'-1'	7101+74.94 TO 7101+89.39
1'	7101+89.39 TO 7107+45.97
1'-1.5'	7107+45.97 TO 7107+57.80
1.5'	7107+57.80 TO 7109+21.98
1.5'-6.3'	7109+21.98 TO 7108+34.41



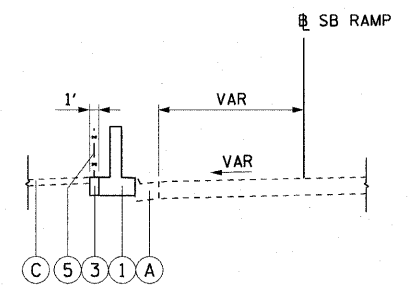
② EX TYPICAL SECTION SB RAMP  
STA 7117+13.50 TO STA 7117+82.62



② PR TYPICAL SECTION SB RAMP  
STA 7117+22.54 TO STA 7117+82.62



③ EX TYPICAL SECTION SB RAMP  
STA 7117+82.62 TO 245' SOUTH OF STA 7120+56.10



③ PR TYPICAL SECTION SB RAMP  
STA 7117+82.62 TO 245' SOUTH OF STA 7120+56.10

EXISTING LEGEND:

- Ⓐ COMBINATION CONCRETE CURB AND GUTTER
- Ⓑ PAVED SHOULDER
- Ⓒ GRASS AREA
- Ⓓ CHAIN LINK FENCE

PROPOSED LEGEND:

- ① FLUTED KNEE WALL
- ② CONCRETE MEDIAN SURFACE, 5" (MODIFIED)
- ③ SEEDING CLASS 2A / TOPSOIL FURNISH AND PLACE, 12" / EROSION CONTROL BLANKET
- ④ CONCRETE MEDIAN SURFACE, 6 INCH SPECIAL
- ⑤ CHAIN LINK FENCE, 4' (SPECIAL)

NOTE:

1. EXISTING PAVEMENT INFORMATION TAKEN FROM DAN RYAN DESIGN PLANS OR RECORD DRAWINGS.

REVISIONS	
NAME	DATE

V:\scg\p201\p40466\p40466\civil\28-knee-wall\Tennis\N\contract\_27018\27018.dwg 2/23/2009 2:23:29 PM