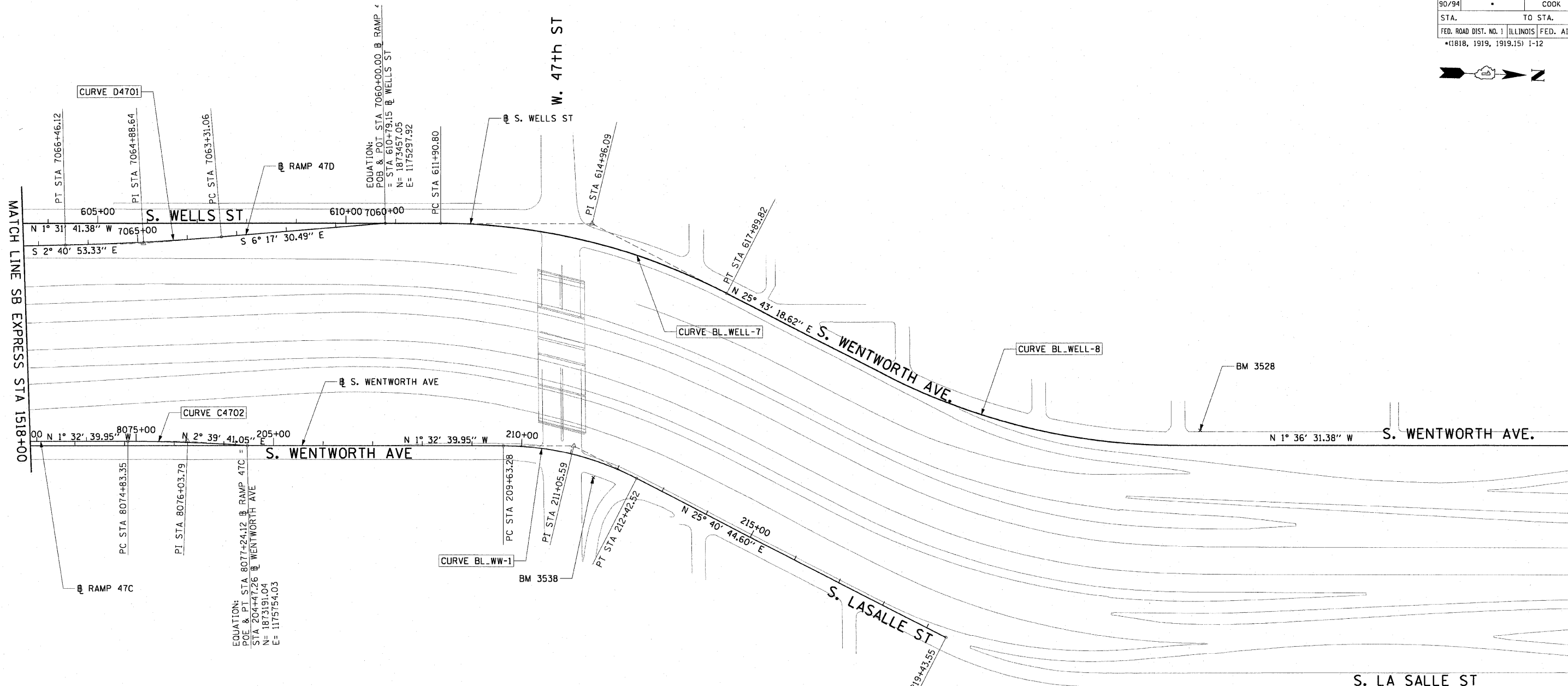


F.A.I. RTE.	SECTION	COUNTY	TOTAL SHEETS	SHEET NO.
90/94		COOK	31	11
STA.		TO STA.		
FED. ROAD DIST. NO. 1		ILLINOIS FED. AID PROJECT		
*1818, 1919, 1919.15		I-12		62984



<p>CURVE D4701 P.I. STA= 7064+88.64 N= 1,872,971.35 E= 1,175,351.47 Δ= 3° 36' 37" D= 1° 08' 45" R= 5000.00' T= 157.58' L= 315.06' E= 2.48' e= N/A T.R.= N/A S.E. RUN= N/A P.C. STA= 7063+31.06 N= 1,873,127.98 E= 1,175,334.20 P.T. STA= 7066+46.12 N= 1,872,813.94 E= 1,175,358.84</p>	<p>CURVE C4702 P.I. STA= 8076+03.79 N= 1,873,070.73 E= 1,175,748.43 Δ= 4° 12' 21" D= 1° 44' 49" R= 3280.00' T= 120.44' L= 240.77' E= 2.21' e= N/A T.R.= N/A S.E. RUN= N/A P.C. STA= 8074+83.35 N= 1,872,950.33 E= 1,175,751.68 P.T. STA= 8077+24.12 N= 1,873,191.04 E= 1,175,754.03</p>	<p>CURVE BL.WELL-8 P.I. STA= 624+60.62 N= 1,874,753.20 E= 1,175,710.42 Δ= 27° 19' 50" D= 4° 27' 01" R= 1287.50' T= 313.03' L= 614.15' E= 37.51' e= N/A T.R.= N/A S.E. RUN= N/A P.C. STA= 621+47.59 N= 1,874,471.18 E= 1,175,574.56 P.T. STA= 627+61.73 N= 1,875,066.11 E= 1,175,701.63</p>	<p>CURVE BL.WELL-7 P.I. STA= 614+96.09 N= 1,873,873.84 E= 1,175,286.80 Δ= 27° 15' 00" D= 4° 32' 57" R= 1259.50' T= 305.29' L= 599.02' E= 36.47' e= N/A T.R.= N/A S.E. RUN= N/A P.C. STA= 611+90.80 N= 1,873,568.66 E= 1,175,294.94 P.T. STA= 617+89.82 N= 1,874,148.87 E= 1,175,419.29</p>	<p>CURVE BL.WW-1 P.I. STA= 211+05.59 N= 1,873,849.12 E= 1,175,736.28 Δ= 27° 13' 25" D= 9° 44' 58" R= 587.69' T= 142.30' L= 279.23' E= 16.98' e= N/A T.R.= N/A S.E. RUN= N/A P.C. STA= 209+63.28 N= 1,873,706.87 E= 1,175,740.12 P.T. STA= 212+42.52 N= 1,873,977.37 E= 1,175,797.95</p>
--	--	---	---	--

- NOTES:**
- AVERAGE GRID TO GROUND CONVERSION FACTOR = 1.000010988654360
 - FOR BENCH MARK INFORMATION, SEE SHEET 1 OF ALIGNMENT PLAN SHEETS.

REVISIONS	
NAME	DATE

ILLINOIS DEPARTMENT OF TRANSPORTATION
F.A.I. 90/94 (DAN RYAN EXPRESSWAY)
71ST ST TO 63RD ST (SOUTHBOUND KNEE WALLS)

ALIGNMENT PLAN

SCALE: 1"=100'
DATE: JANUARY 14, 2009

DRAWN BY: NJH
CHECKED BY: RMG

AECOM

U:\scapfl\p207\p40468\p40468.dwg\IN-28-knee-wall_Fence.spl\contract 27.dwg(2/2007)2a.spl
2/23/2009 2:23:23 PM