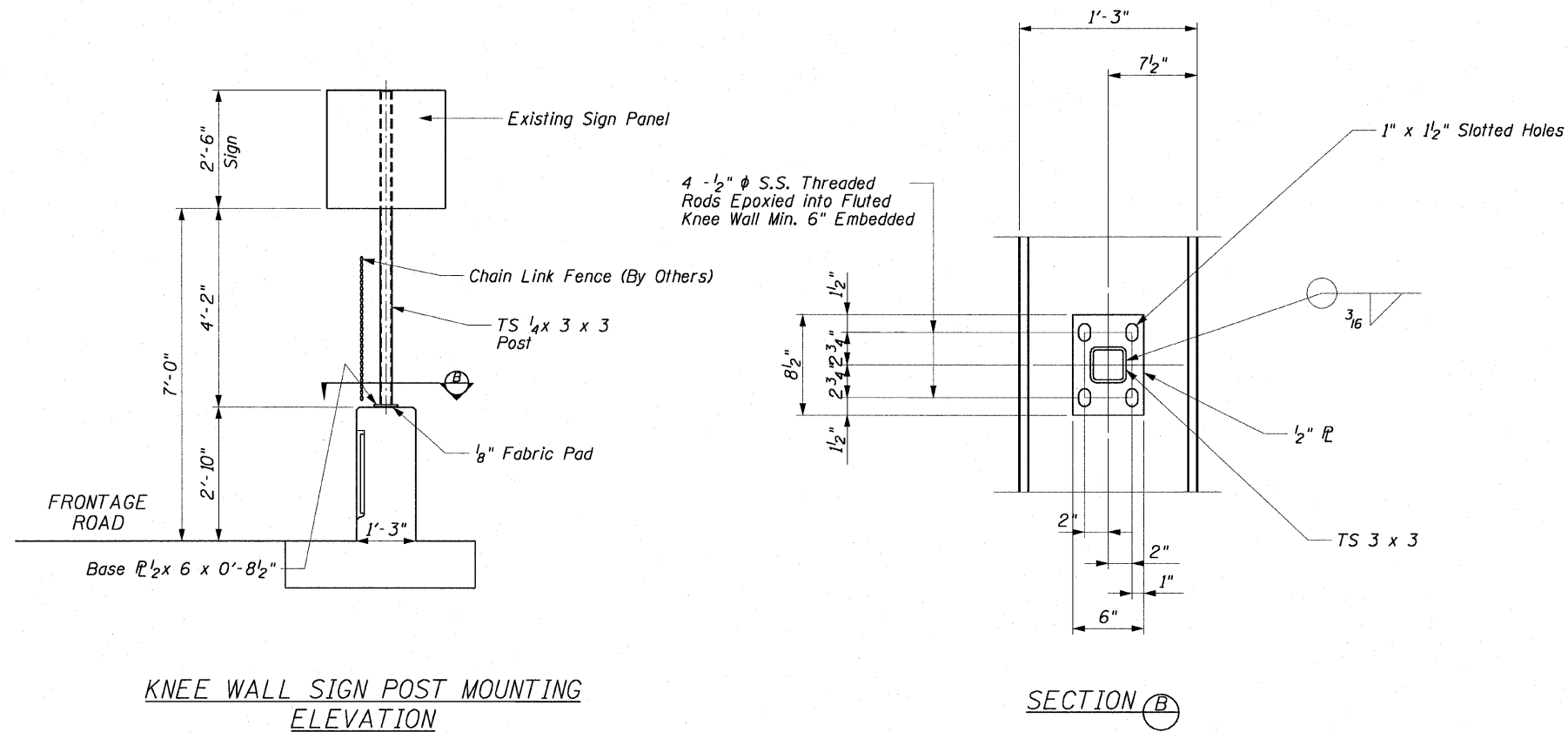


WALL MOUNTED SIGN SUPPORT FOR TYPE 1 PANEL (SPECIAL) DETAILS

F.A.I. RT.:	SECTION	COUNTY	TOTAL SHEETS	SHEET NO.
90/94		COOK	31	21
STA.		TO STA.		
FED. ROAD DIST. NO. 1		ILLINOIS FED. AID PROJECT		
*(1818, 1919, 1919.15)		1-12		
				62984



KNEE WALL SIGN POST MOUNTING ELEVATION

SECTION (B)

NOTE

When drilling and epoxy grouting the anchor rods, the Contractor shall use the capsule or the adhesive cartridge type anchor rods that have been previously tested and given a prior approval by IDOT. The Contractor shall install these anchor rods in pre-drilled holes according to the manufacturer's recommendations and procedures. The capsule or the adhesive cartridge shall be sealed with pre-measured amounts of the adhesive chemical. This associated materials and work performed shall be included in the cost of Wall Mounted Sign Support for Type 1 Panel (Special).

AECOM

REVISIONS	
NAME	DATE

ILLINOIS DEPARTMENT OF TRANSPORTATION
 F.A.I. 90/94 (DAN RYAN EXPRESSWAY)
 71ST ST TO 63RD ST (SOUTHBOUND KNEE WALLS)
 ROADWAY DETAILS
 WALL MOUNTED SIGN SUPPORT
 FOR TYPE 1 PANEL (SPECIAL) DETAILS
 SCALE: NONE DRAWN BY: OS
 DATE: JANUARY 14, 2009 CHECKED BY: SWANG