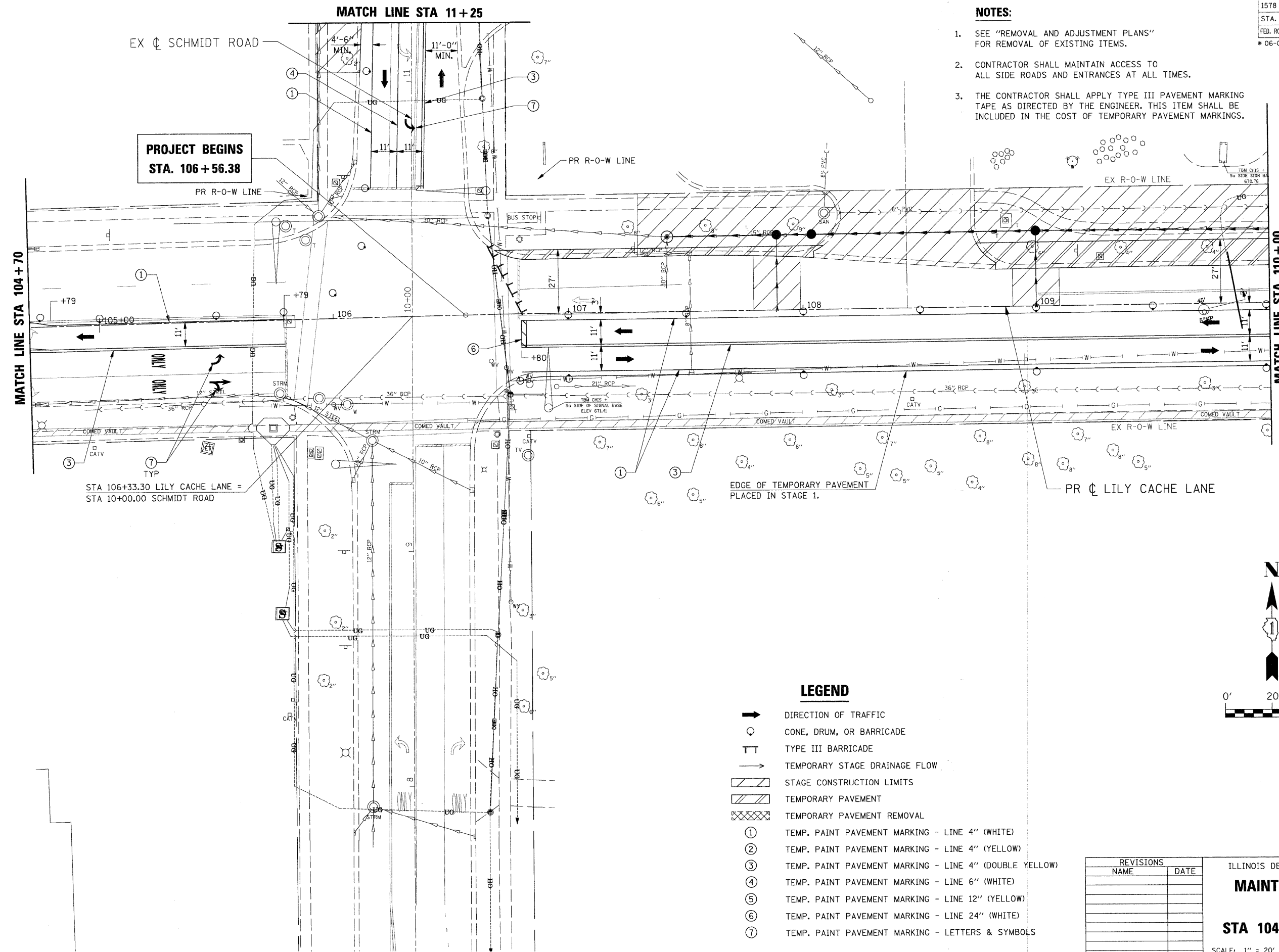


F.A.U. RTE.	SECTION	COUNTY	TOTAL SHEETS	SHEET NO.
1578	*	WILL	155	52
STA. 104+70		TO STA. 110+00		
FED. ROAD DIST. NO.		ILLINOIS FED. AID PROJECT		
* 06-00046-00-PV				

NOTES:

- SEE "REMOVAL AND ADJUSTMENT PLANS" FOR REMOVAL OF EXISTING ITEMS.
- CONTRACTOR SHALL MAINTAIN ACCESS TO ALL SIDE ROADS AND ENTRANCES AT ALL TIMES.
- THE CONTRACTOR SHALL APPLY TYPE III PAVEMENT MARKING TAPE AS DIRECTED BY THE ENGINEER. THIS ITEM SHALL BE INCLUDED IN THE COST OF TEMPORARY PAVEMENT MARKINGS.



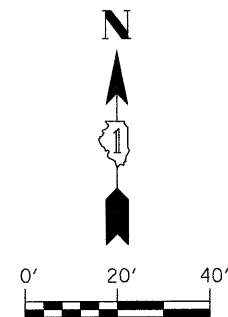
**PROJECT BEGINS
STA. 106 + 56.38**

STA 106+33.30 LILY CACHE LANE =
STA 10+00.00 SCHMIDT ROAD

EDGE OF TEMPORARY PAVEMENT
PLACED IN STAGE 1.

LEGEND

- ➔ DIRECTION OF TRAFFIC
- CONE, DRUM, OR BARRICADE
- ⊥ TYPE III BARRICADE
- ➔ TEMPORARY STAGE DRAINAGE FLOW
- ▨ STAGE CONSTRUCTION LIMITS
- ▨ TEMPORARY PAVEMENT
- ▨ TEMPORARY PAVEMENT REMOVAL
- ① TEMP. PAINT PAVEMENT MARKING - LINE 4" (WHITE)
- ② TEMP. PAINT PAVEMENT MARKING - LINE 4" (YELLOW)
- ③ TEMP. PAINT PAVEMENT MARKING - LINE 4" (DOUBLE YELLOW)
- ④ TEMP. PAINT PAVEMENT MARKING - LINE 6" (WHITE)
- ⑤ TEMP. PAINT PAVEMENT MARKING - LINE 12" (YELLOW)
- ⑥ TEMP. PAINT PAVEMENT MARKING - LINE 24" (WHITE)
- ⑦ TEMP. PAINT PAVEMENT MARKING - LETTERS & SYMBOLS



REVISIONS	
NAME	DATE

ILLINOIS DEPARTMENT OF TRANSPORTATION
**MAINTENANCE OF TRAFFIC
STAGE 2
STA 104+70 TO STA 110+00**

SCALE: 1" = 20'
DATE: APRIL 9, 2009
DRAWN BY: JEB
CHECKED BY: CMS

PLOT DATE = #DATE#
FILE NAME = #FILE#
USER NAME = #USER#

#FILES#