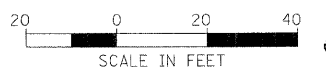
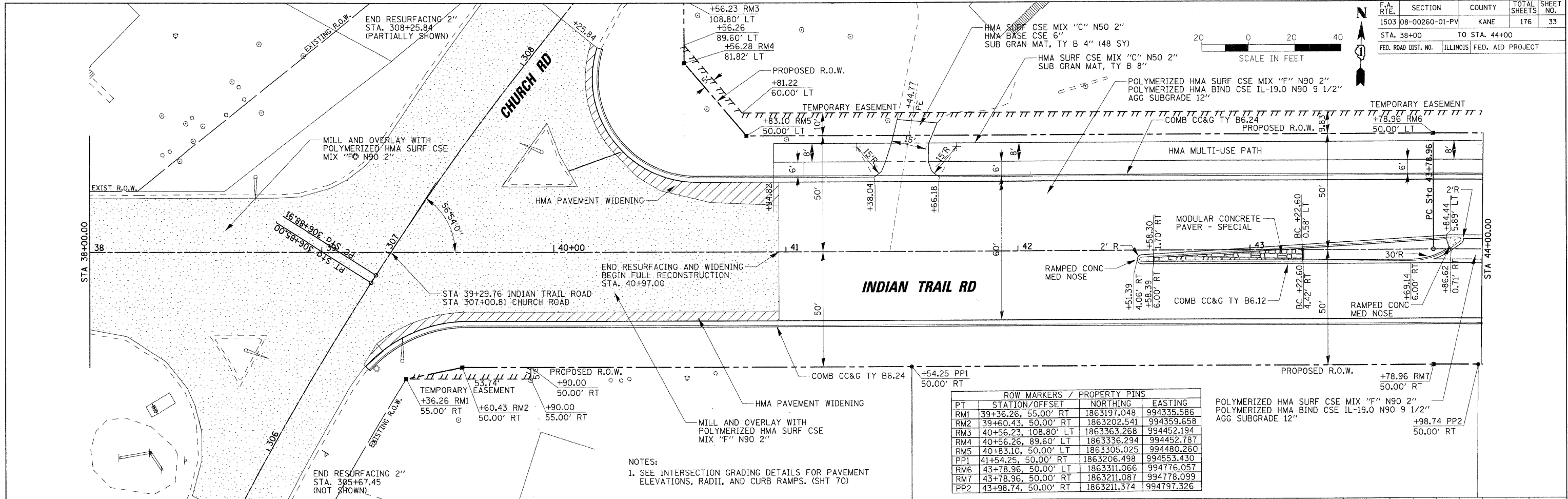


F.A. RTE.	SECTION	COUNTY	TOTAL SHEETS	SHEET NO.
1503	08-00260-01-PV	KANE	176	33
STA. 38+00		TO STA. 44+00		
FED. ROAD DIST. NO.		ILLINOIS FED. AID PROJECT		



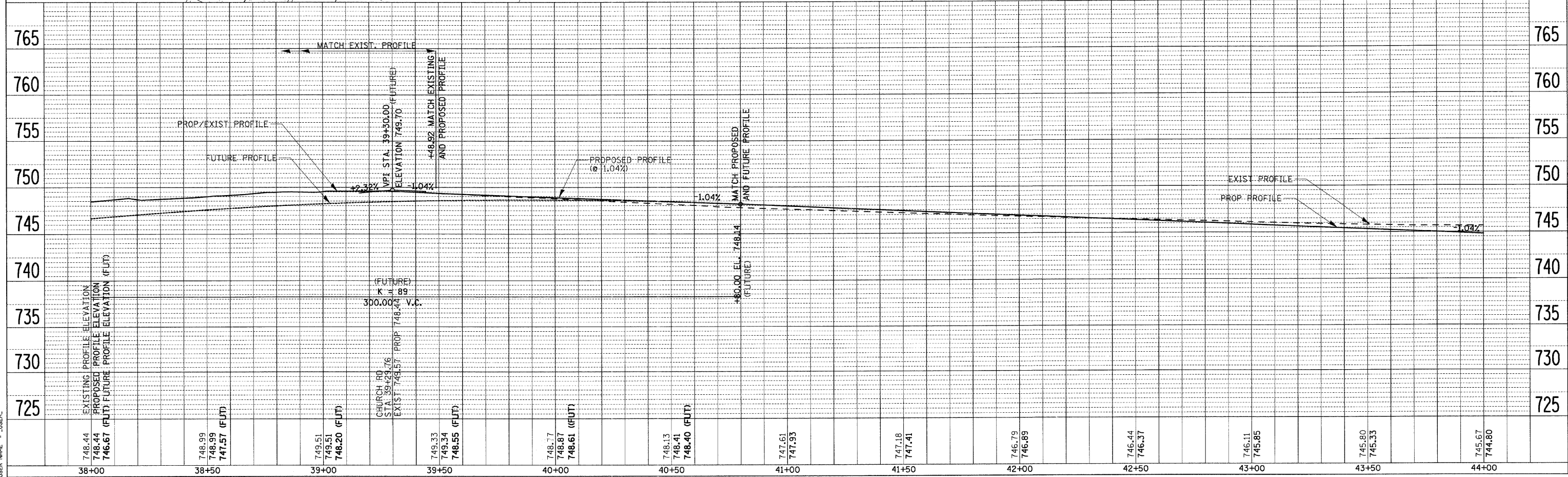
PLAN	DATE
BY	
REVIEWED	
PLOTTED	
NOTED	
FILED	
NO.	



PT	STATION/OFFSET	NORTHING	EASTING
RM1	39+36.26, 55.00' RT	1863197.048	994335.586
RM2	39+60.43, 50.00' RT	1863202.541	994359.658
RM3	40+56.23, 108.80' LT	1863363.268	994452.194
RM4	40+56.26, 89.60' LT	1863336.294	994452.787
RM5	40+83.10, 50.00' LT	1863305.025	994480.260
PP1	41+54.25, 50.00' RT	1863206.498	994553.430
RM6	43+78.96, 50.00' LT	1863311.066	994776.057
RM7	43+78.96, 50.00' RT	1863211.087	994778.099
PP2	43+98.74, 50.00' RT	1863211.374	994797.326

NOTES:
1. SEE INTERSECTION GRADING DETAILS FOR PAVEMENT ELEVATIONS, RADII, AND CURB RAMPS. (SHT 70)

PROFILE	DATE
BY	
REVIEWED	
PLOTTED	
NOTED	
FILED	
NO.	



DATE = 5/26/2009
 PLOT SCALE = 1" = 20'
 USER NAME = JUSER