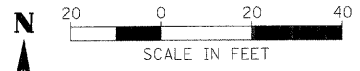


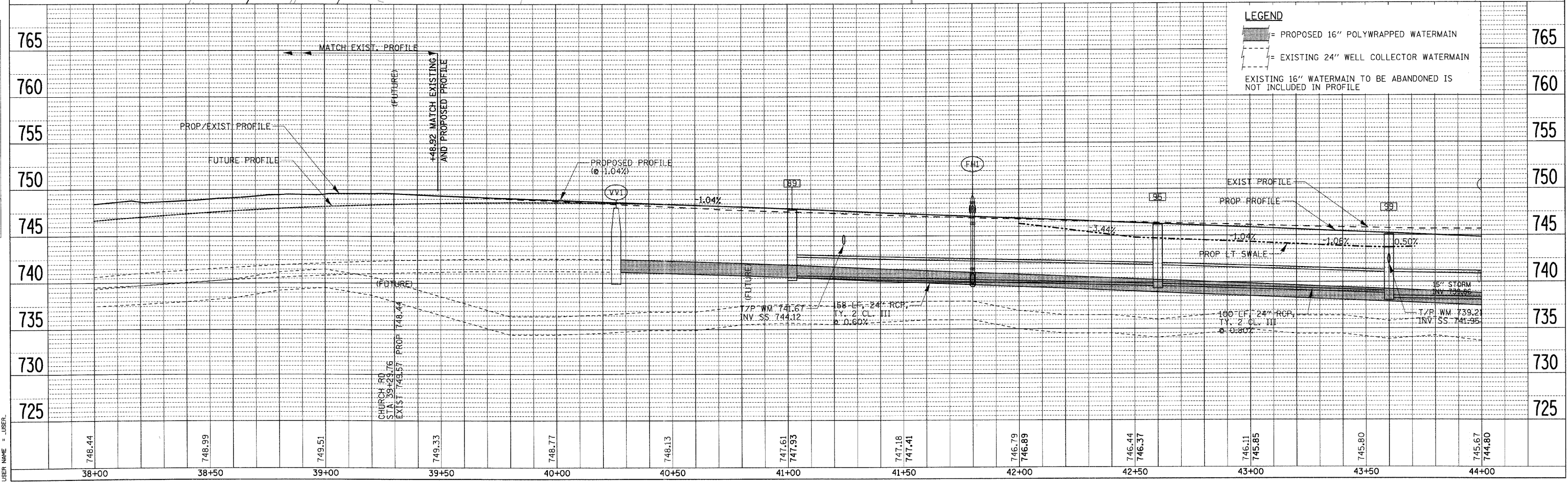
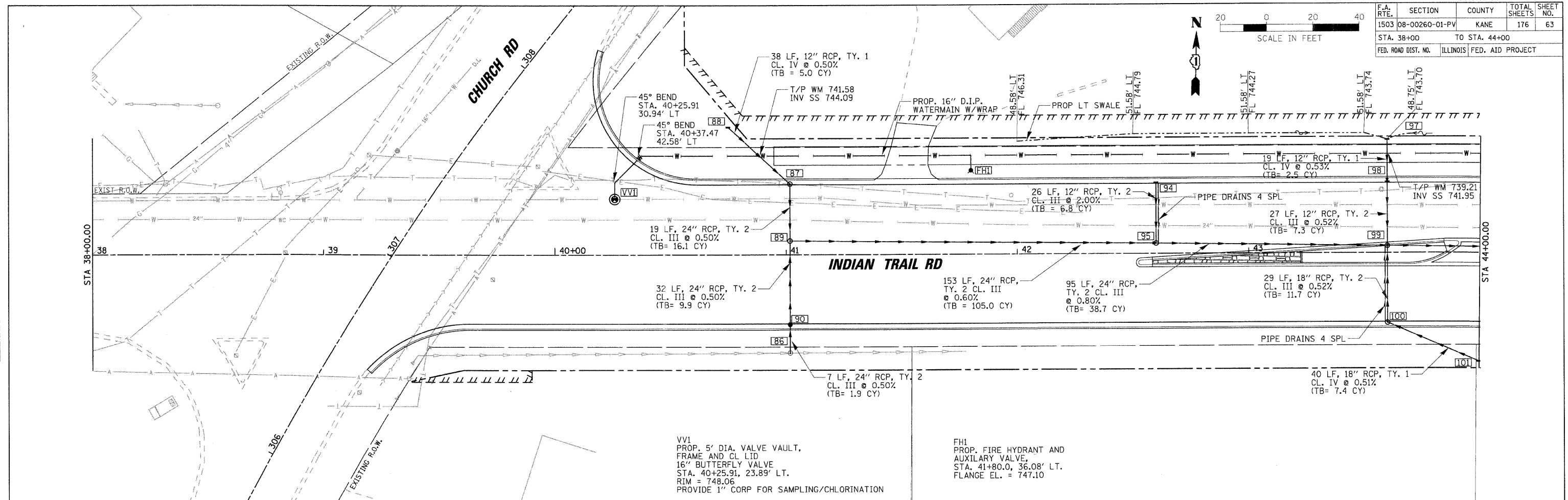
F.A. RTE.	SECTION	COUNTY	TOTAL SHEETS	SHEET NO.
1503	08-00260-01-PV	KANE	176	63
STA. 38+00		TO STA. 44+00		
FED. ROAD DIST. NO.		ILLINOIS FED. AID PROJECT		



DATE	BY

DATE	BY

PLOT DATE = 1/5/2009
 FILE NAME = H:\Aurora\120099_1\TRIN\Civil\Sheet\DRN.IT_7.dgn
 PLOT SCALE = 1"=20'
 USER NAME = JUSEL



LEGEND
 = PROPOSED 16" POLYWRAPPED WATERMAIN
 = EXISTING 24" WELL COLLECTOR WATERMAIN
 EXISTING 16" WATERMAIN TO BE ABANDONED IS NOT INCLUDED IN PROFILE