

F.A.U. RTE.	SECTION	COUNTY	TOTAL SHEETS	SHEET NO.
1503	08-00260-01-PV	KANE	176	95
STA.		TO STA.		
FED. ROAD DIST. NO.	ILLINOIS	FED. AID PROJECT		

**INTERCONNECT SCHEMATIC LEGEND**

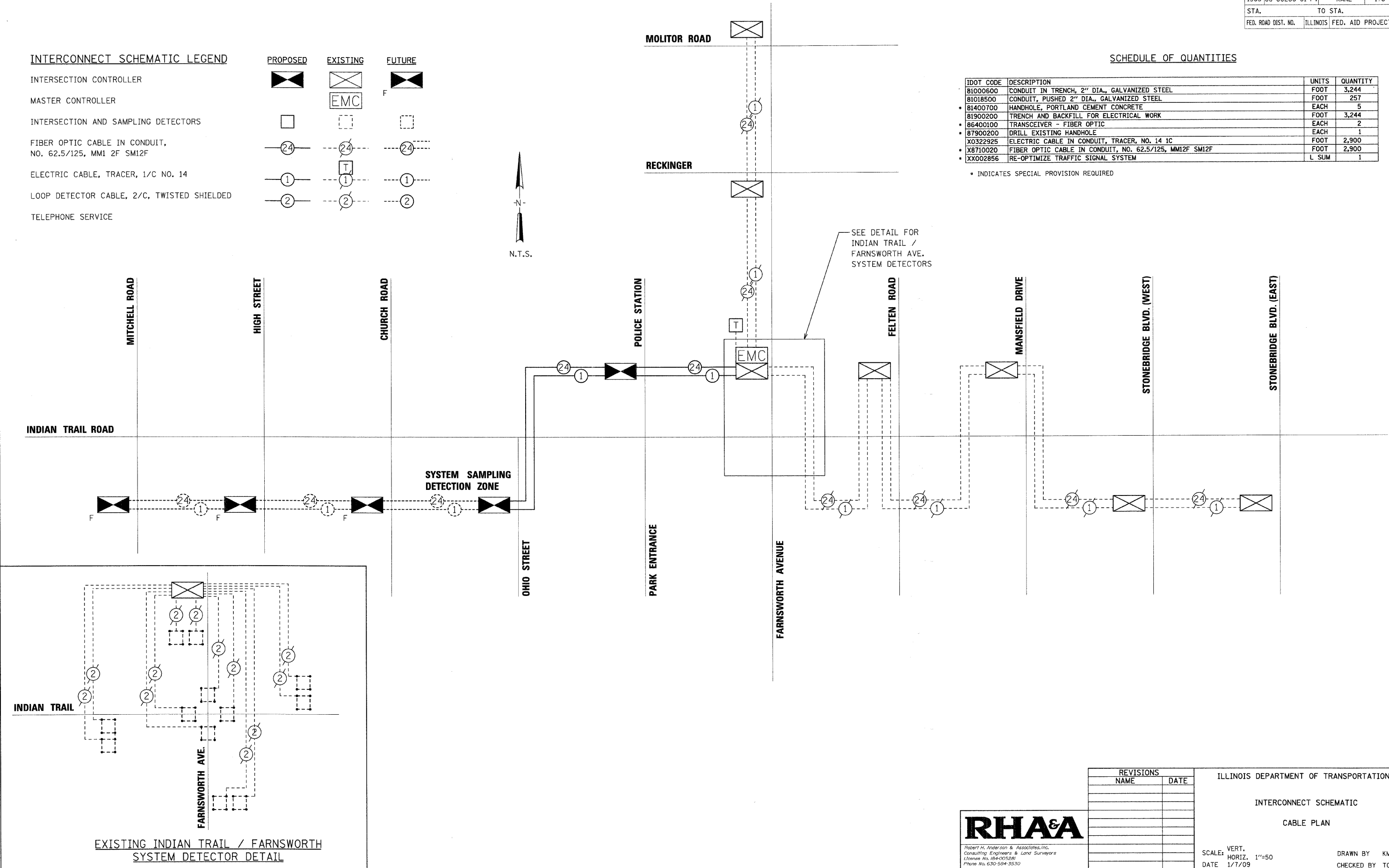
	PROPOSED	EXISTING	FUTURE
INTERSECTION CONTROLLER			
MASTER CONTROLLER			
INTERSECTION AND SAMPLING DETECTORS			
FIBER OPTIC CABLE IN CONDUIT, NO. 62.5/125, MM1 2F SM12F			
ELECTRIC CABLE, TRACER, 1/C NO. 14			
LOOP DETECTOR CABLE, 2/C, TWISTED SHIELDED			
TELEPHONE SERVICE			



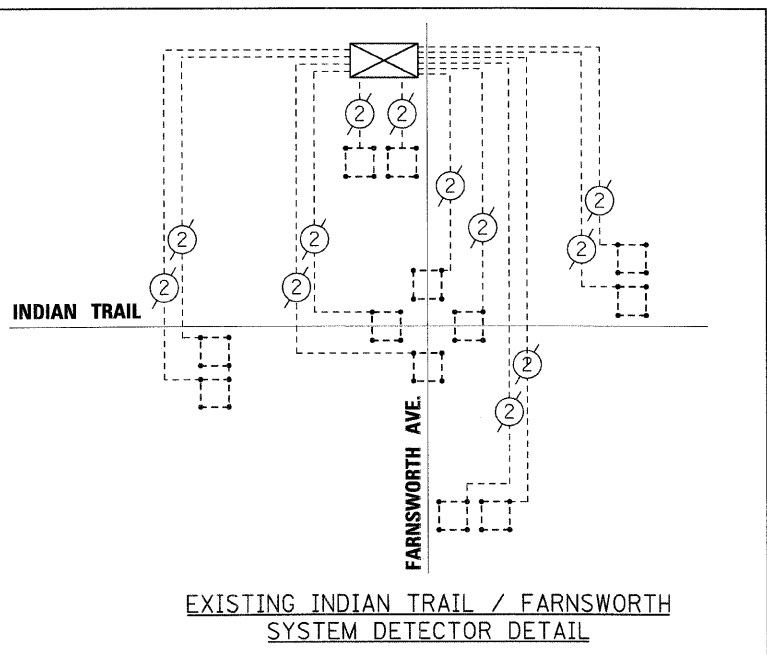
**SCHEDULE OF QUANTITIES**

IDOT CODE	DESCRIPTION	UNITS	QUANTITY
81000600	CONDUIT IN TRENCH, 2" DIA., GALVANIZED STEEL	FOOT	3,244
81018500	CONDUIT, PUSHED 2" DIA., GALVANIZED STEEL	FOOT	257
81400700	HANDHOLE, PORTLAND CEMENT CONCRETE	EACH	5
81900200	TRENCH AND BACKFILL FOR ELECTRICAL WORK	FOOT	3,244
86400100	TRANSCEIVER - FIBER OPTIC	EACH	2
87900200	DRILL EXISTING HANDHOLE	EACH	1
X0322925	ELECTRIC CABLE IN CONDUIT, TRACER, NO. 14 1C	FOOT	2,900
X8710020	FIBER OPTIC CABLE IN CONDUIT, NO. 62.5/125, MM12F SM12F	FOOT	2,900
XX002856	RE-OPTIMIZE TRAFFIC SIGNAL SYSTEM	L SUM	1

\* INDICATES SPECIAL PROVISION REQUIRED



SEE DETAIL FOR INDIAN TRAIL / FARNSWORTH AVE. SYSTEM DETECTORS



REVISIONS	
NAME	DATE

ILLINOIS DEPARTMENT OF TRANSPORTATION  
 INTERCONNECT SCHEMATIC  
 CABLE PLAN  
 SCALE: VERT. 1"=50'  
 HORIZ. 1"=50'  
 DATE 1/7/09  
 DRAWN BY KMA  
 CHECKED BY TC/SBP



PLOT DATE = 1/5/2009  
 FILE NAME = H:\Aurora\120089\_11\11\11\Civil\Signal\3.dgn  
 PLOT SCALE = 1"=50'  
 USER NAME = USER