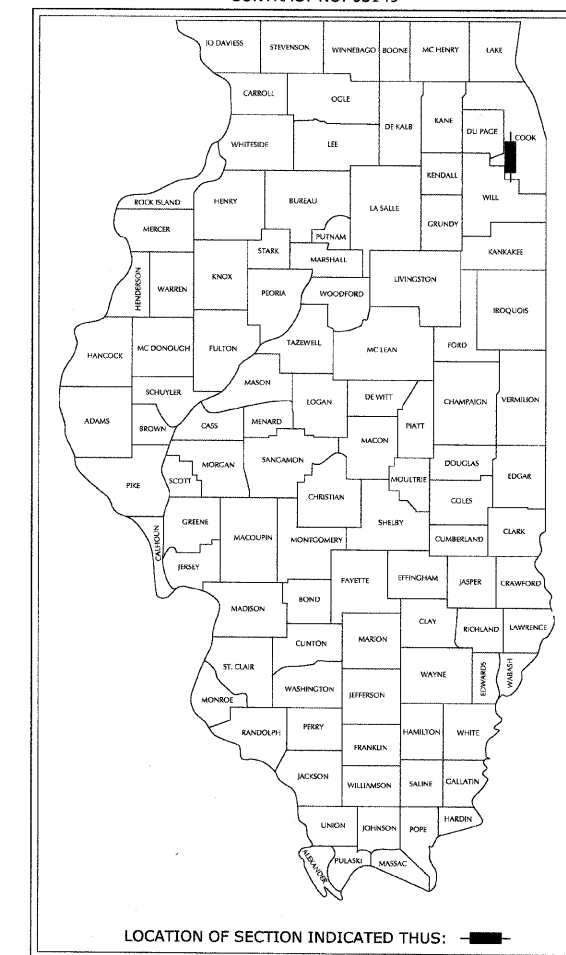


F.A.U. RTE.	SECTION	COUNTY	TOTAL SHEETS	SHEET No.
1004	08-00079-02-FP	COOK	32	1
FED. ROAD DIST. NO. 1 ILLINOIS		FED. AID PROJECT		

STATE OF ILLINOIS
DEPARTMENT OF TRANSPORTATION
DIVISION OF HIGHWAYS
**PLANS FOR PROPOSED
FEDERAL AID HIGHWAY**

MAPLE AVENUE RELIEF SEWER
SECTION 08-00079-02-FP
PROJECT NO. M-9003 (168)
COOK COUNTY
C-91-203-09

CONTRACT NO. 63149



HEUER AND ASSOCIATES

Consulting Engineers
2315 Enterprise Drive - Suite 102 Westchester, IL 60154-5811 708-492-1000

STATE OF ILLINOIS
DEPARTMENT OF TRANSPORTATION
DIVISION OF HIGHWAYS

APPROVED: *[Signature]* MARCH 4, 2009
Village of La Grange, Division of Public Works
LOCAL AGENCY, POSITION

PASSED: APRIL 06, 2009
[Signature]
DISTRICT 1 ENGINEER OF LOCAL ROADS AND STREETS

RELEASING FOR BID BASED ON LIMITED REVIEW: APRIL 06, 2009
[Signature]
DEPUTY DIRECTOR OF HIGHWAYS, REGION 1 ENGINEER

PRINTED BY AUTHORITY OF THE STATE OF ILLINOIS

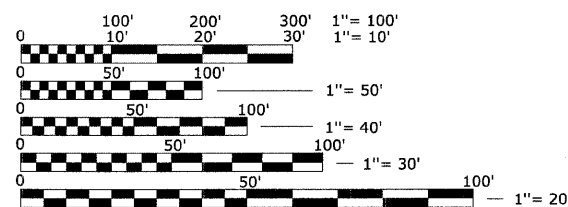
FIELD ENGINEER - MARILIN SOLOMON 847-705-4407

FOR INDEX OF SHEETS SEE SHEET NO. 2

PROJECT STAGE 2

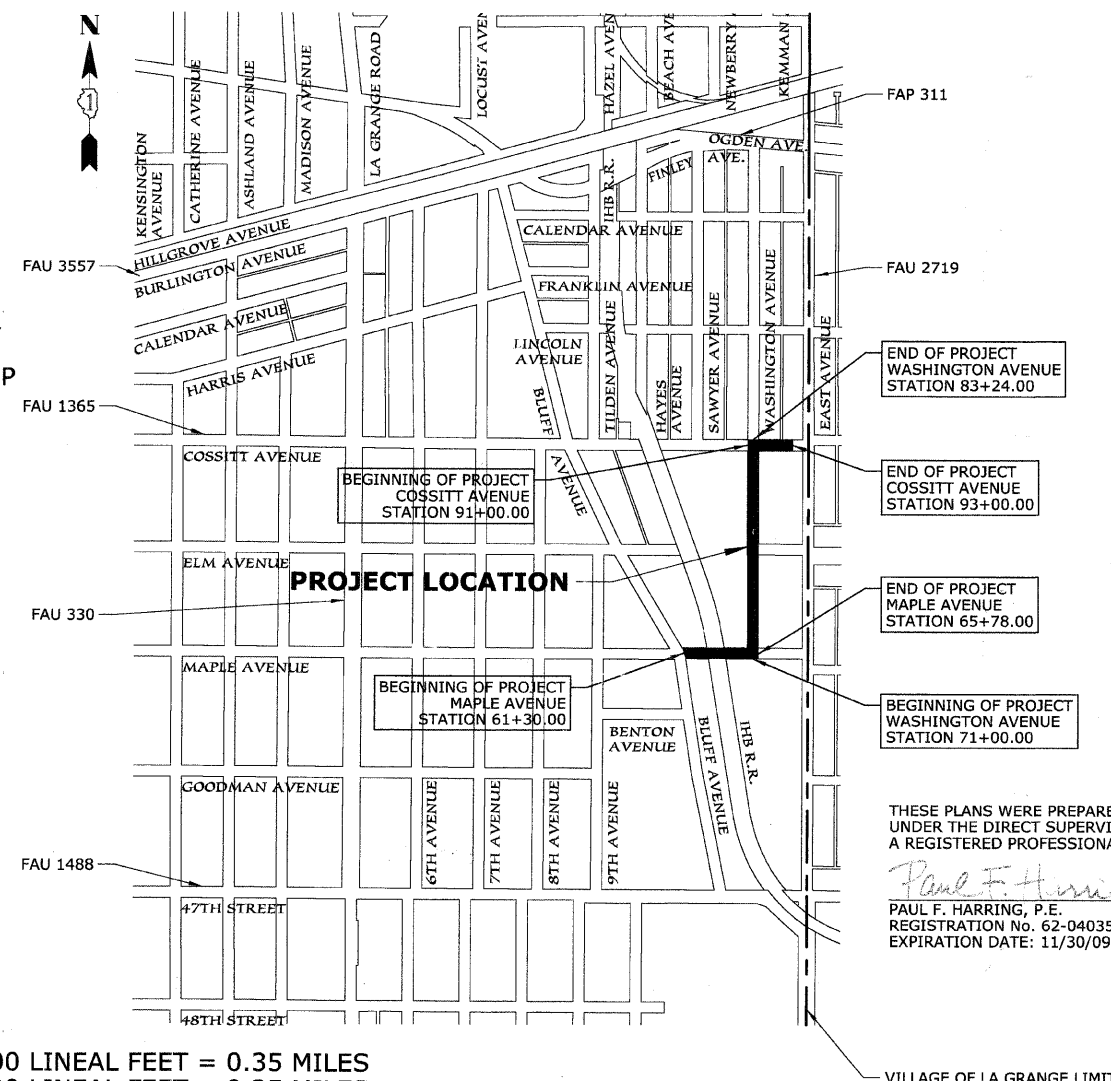
PROJECT LOCATED IN THE VILLAGE OF LA GRANGE

SECTION 4,
TOWNSHIP 38N,
RANGE 12E
LYONS TOWNSHIP

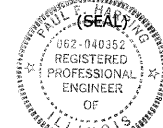


FULL SIZE PLANS HAVE BEEN PREPARED USING STANDARD ENGINEERING SCALES; REDUCED SIZED PLANS WILL NOT CONFORM TO STANDARD SCALES. IN MAKING MEASUREMENTS ON REDUCED PLANS, THE ABOVE SCALES MAY BE USED.

FOR UTILITY INFORMATION
CALL J.U.L.I.E.
1-800-892-0123



THESE PLANS WERE PREPARED BY HEUER AND ASSOCIATES, P.C. UNDER THE DIRECT SUPERVISION OF PAUL F. HARRING, P.E., A REGISTERED PROFESSIONAL ENGINEER OF THE STATE OF ILLINOIS.
Paul F. Harring
PAUL F. HARRING, P.E.
REGISTRATION No. 62-040352
EXPIRATION DATE: 11/30/09
DATE: 27 Feb 2009



GROSS LENGTH OF PROJECT = 1,872.00 LINEAL FEET = 0.35 MILES
NET LENGTH OF PROJECT = 1,872.00 LINEAL FEET = 0.35 MILES

CONTRACT NO. 63149