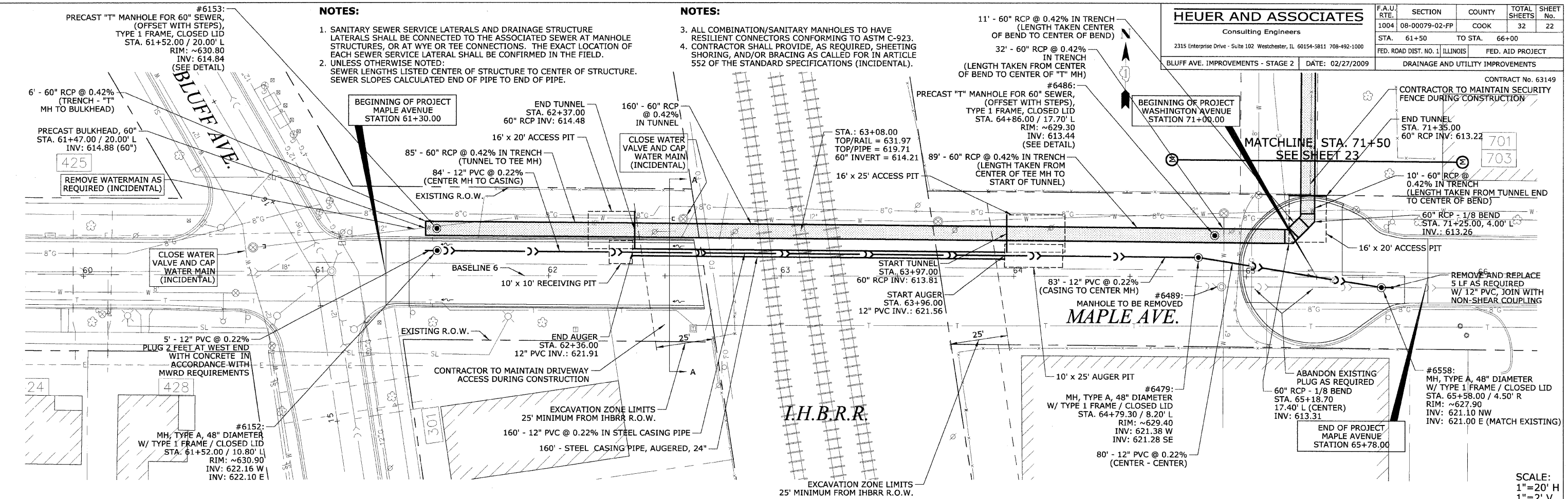


NOTES:

- SANITARY SEWER SERVICE LATERALS AND DRAINAGE STRUCTURE LATERALS SHALL BE CONNECTED TO THE ASSOCIATED SEWER AT MANHOLE STRUCTURES, OR AT WYE OR TEE CONNECTIONS. THE EXACT LOCATION OF EACH SEWER SERVICE LATERAL SHALL BE CONFIRMED IN THE FIELD.
- UNLESS OTHERWISE NOTED: SEWER LENGTHS LISTED CENTER OF STRUCTURE TO CENTER OF STRUCTURE. SEWER SLOPES CALCULATED END OF PIPE TO END OF PIPE.

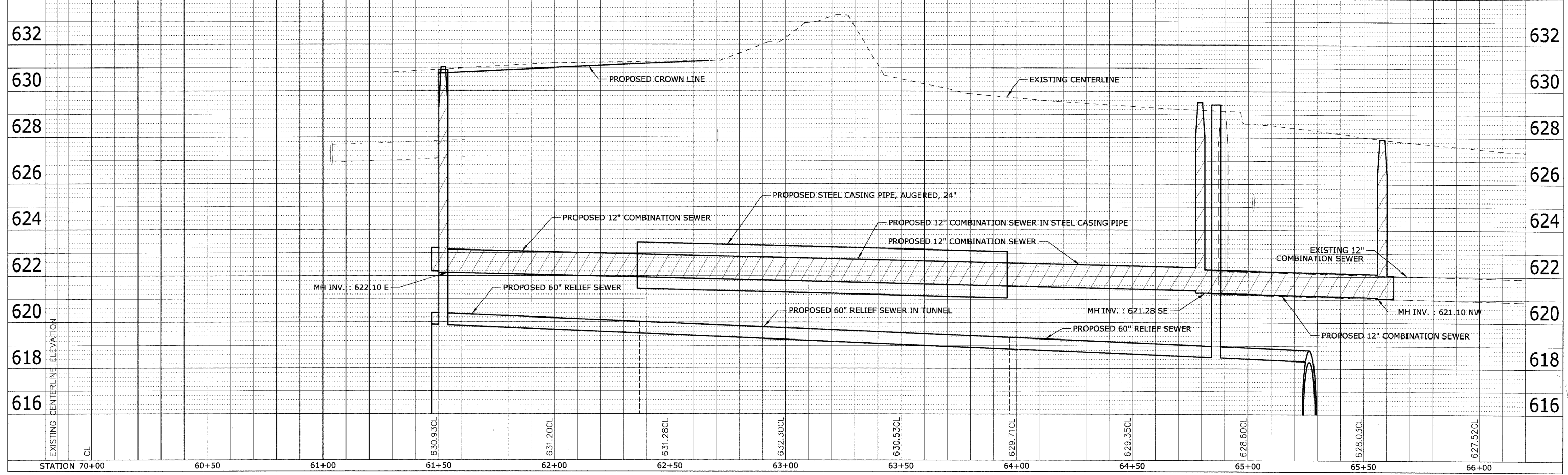
NOTES:

- ALL COMBINATION/SANITARY MANHOLES TO HAVE RESILIENT CONNECTORS CONFORMING TO ASTM C-923.
- CONTRACTOR SHALL PROVIDE, AS REQUIRED, SHEETING SHORING, AND/OR BRACING AS CALLED FOR IN ARTICLE 552 OF THE STANDARD SPECIFICATIONS (INCIDENTAL).



DATE	BY	REVISION
		PLAN
		REVISIONS
		NO. 1
		NO. 2
		NO. 3
		NO. 4
		NO. 5
		NO. 6
		NO. 7
		NO. 8
		NO. 9
		NO. 10

DATE	BY	REVISION
		PROFILE
		REVISIONS
		NO. 1
		NO. 2
		NO. 3
		NO. 4
		NO. 5
		NO. 6
		NO. 7
		NO. 8
		NO. 9
		NO. 10



SCALE:
 1" = 20' H
 1" = 2' V