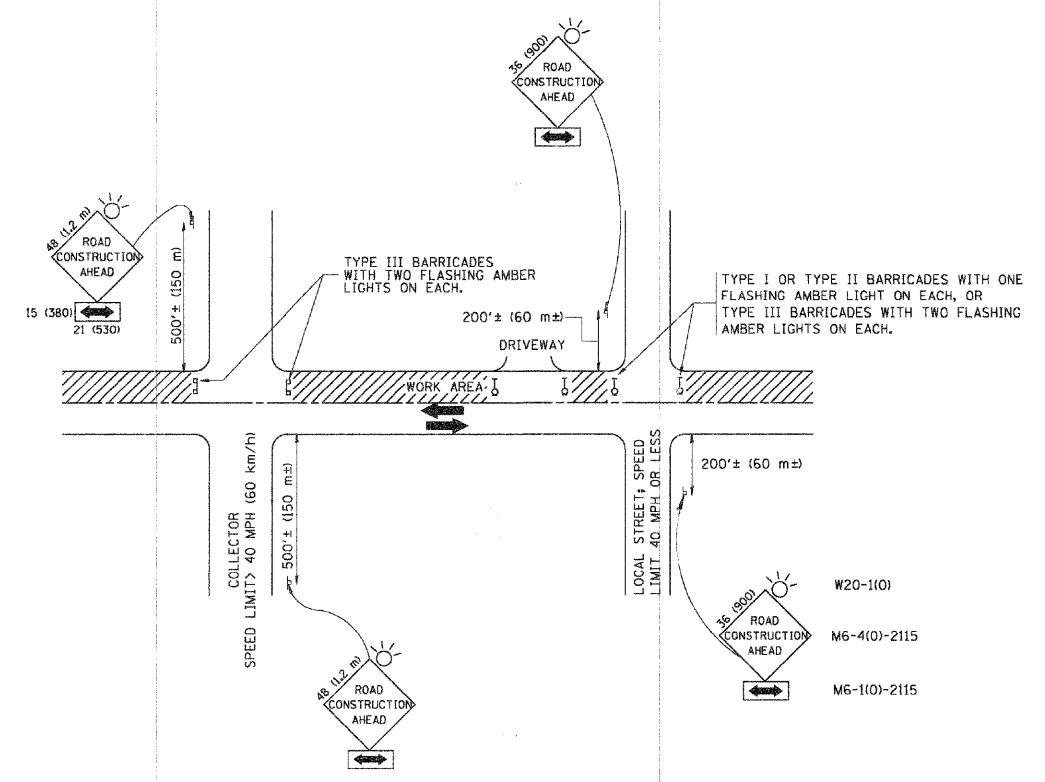


F.A.U. RTE.	SECTION	COUNTY	TOTAL SHEETS	SHEET NO.
1320	08-00174-00-RS	KANE/COOK	19	13
CONTRACT NO. 63150				



TRAFFIC CONTROL AND PROTECTION FOR SIDE ROADS, INTERSECTIONS, AND DRIVEWAYS

NOTES:

- A. FOR NO LANE RESTRICTION ON THE SIDE ROAD OR DRIVEWAYS
- B. FOR A LANE CLOSURE ON A SIDE ROAD OR DRIVEWAY:
USE APPLICABLE PORTIONS OF THE TYPICAL APPLICATION OF TRAFFIC CONTROL DEVICES (STD. 701501, STD. 701606 OR THE APPROPRIATE STANDARD). THE SPACING OF SIGNS AND BARRICADES SHALL BE ADJUSTED FOR FIELD CONDITIONS AS DIRECTED BY THE ENGINEER. THE DIRECTIONAL ARROW SHALL BE COVERED OR REMOVED WHEN NO LONGER CONSISTENT WITH THE SIDE ROAD LANE CLOSURE.
- C. ADVANCE WARNING SIGNS ARE TO BE OMITTED ON DRIVEWAY UNLESS OTHERWISE NOTED.
- D. THE TRAFFIC CONTROL AND PROTECTION FOR SIDE ROADS, INTERSECTIONS, AND DRIVEWAYS SHALL BE INCIDENTAL TO THE COST OF SPECIFIED TRAFFIC CONTROL STANDARDS OR ITEMS.
- SIDE ROAD WITH A SPEED LIMIT OF 40 MPH (60 km/h) OR LESS AS SHOWN ON THE DRAWING AND AS DIRECTED BY THE ENGINEER:
 - ONE **ROAD CONSTRUCTION AHEAD** SIGN 36 x 36 (900x900) WITH A FLASHER AND FLAG MOUNTED ON IT APPROXIMATELY 200' (60 m) IN ADVANCE OF THE MAIN ROUTE.
 - THE CLOSED PORTION OF THE MAIN ROUTE SHALL BE PROTECTED BY BLOCKING WITH TYPE I, TYPE II OR TYPE III BARRICADES, 1/3 OF THE CROSS SECTION OF THE CLOSED PORTION.
 - SIDE ROAD WITH A SPEED LIMIT GREATER THAN 40 MPH (60 km/h) AS SHOWN ON THE DRAWING AND AS DIRECTED BY THE ENGINEER:
 - ONE **ROAD CONSTRUCTION AHEAD** SIGN 48 x 48 (1.2 m x 1.2 m) WITH A FLASHER MOUNTED ON IT APPROXIMATELY 500' (150 m) IN ADVANCE OF THE MAIN ROUTE.
 - THE CLOSED PORTION OF THE MAIN ROUTE SHALL BE PROTECTED BY BLOCKING WITH TYPE III BARRICADES, 1/2 OF THE CROSS SECTION OF THE CLOSED PORTION.
 - WHEN THE SIDE ROAD LIES BETWEEN THE BEGINNING OF THE MAINLINE SIGNING AND THE WORK ZONE, A SINGLE HEADED ARROW (M6-1) SHALL BE USED IN LIEU OF THE DOUBLE HEADED ARROW (M6-4).

All dimensions are in millimeters (inches) unless otherwise shown.

FILE NAME = W:\data\std\22x34\vc12.dgn	USER NAME = gnglinatst	DESIGNED - LHA	REVISED - J. OBERLE 10-18-95
PLOT SCALE = 50.826 "/ IN.	CHECKED -	DRAWN -	REVISED - A. HOUSEN 03-06-96
PLOT DATE = 1/1/2008	DATE - 06-89		REVISED - A. HOUSEN 10-15-96
			REVISED - T. RAMMACHER 01-06-00

**STATE OF ILLINOIS
DEPARTMENT OF TRANSPORTATION**

TRAFFIC CONTROL AND PROTECTION FOR SIDE ROADS, INTERSECTIONS, AND DRIVEWAYS			
SCALE: NONE	SHEET NO. 1 OF 1 SHEETS	STA. TO STA.	F.A.U. RTE. SECTION COUNTY TOTAL SHEETS SHEET NO.
			TC-10 CONTRACT NO.
			FED. ROAD DIST. NO. 1 (ILLINOIS) FED. AID PROJECT

Plotfile: March 20, 2009 @ 11:01 AM By: Jim Galus - Tab: 13 TC-10 22x34

COPYRIGHT © 2009 ENGINEERING ENTERPRISES, INC.

Engineering Enterprises, Inc.
CONSULTING ENGINEERS
52 Wheeler Road
Sugar Grove, Illinois 60554
630.466.6700 / www.eeiweb.com

**CITY OF ELGIN
KANE COUNTY, ILLINOIS**

NO.	DATE	REVISIONS
2	03-20-09	PER IDOT COMMENTS
1	02-13-08	PER IDOT COMMENTS

**SUMMIT STREET
LAPP IMPROVEMENTS**

**TRAFFIC CONTROL AND PROTECTION
FOR SIDE ROADS, INTERSECTIONS,
AND DRIVEWAYS**

DATE:	DECEMBER 2008
PROJECT NO.:	EG0810
FILE:	EG0810-CVR
SHEET	13 OF 19

Path: H:\SDSKPROJ\EG0810\DWG\DWG_FINAL\ENG\EG0810-CVR