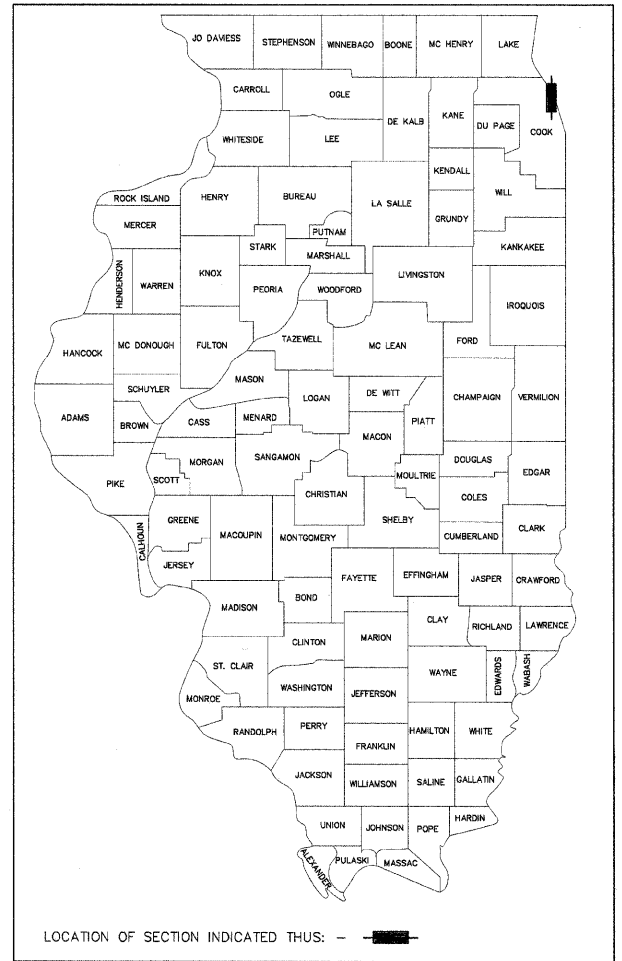


F.A.U. RTE.	SECTION	COUNTY	TOTAL SHEETS	SHEET NO.
2865	08-00250-01-PV	COOK	31	1
		ILLINOIS	CONTRACT NO. 63189	

STATE OF ILLINOIS
DEPARTMENT OF TRANSPORTATION
DIVISION OF HIGHWAYS

PLANS FOR PROPOSED FEDERAL AID HIGHWAY

(FAU 2865) SHERIDAN ROAD
(FAU 1332) SOUTH BLVD. TO (FAU 1329) MAIN ST.
SECTION 08-00250-01-PV
PROJECT NO. ARA-9003(299)
ROADWAY RESURFACING
COOK COUNTY



INDEX OF SHEETS

SHEET NO.	DESCRIPTION
1	COVER SHEET
2	GENERAL NOTES
3	SUMMARY OF QUANTITIES
4	TYPICAL SECTIONS
5-10	ROADWAY IMPROVEMENT PLANS
11-15	RELIEF SEWER IMPROVEMENT PLANS
16-18	WATER MAIN IMPROVEMENT PLANS
19	MAINTENANCE OF TRAFFIC PLAN
20	DETOUR PLAN
21	PAVEMENT MARKING PLAN
22-23	CONSTRUCTION DETAILS
24-31	DISTRICT ONE DETAILS

HIGHWAY STANDARDS

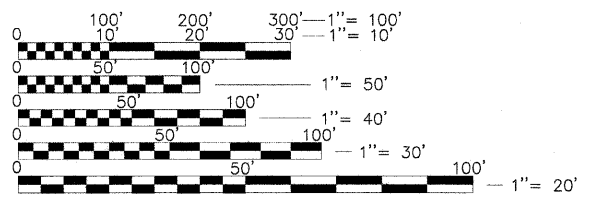
NUMBER	DESCRIPTION
000001-05	STANDARD SYMBOLS, ABBREVIATIONS, & PATTERNS
420001-07	PAVEMENT JOINTS
420701-02	PAVEMENT FABRIC
424001-05	CURB RAMPS FOR SIDEWALK
442101-07	CLASS B PATCHES
442201-03	CLASS C&D PATCHES
602001-02	CATCH BASIN-TYPE A
602301-02	INLET-TYPE A
602401-02	MANHOLE-TYPE A
602501-01	VALVE VAULT-TYPE A
602601-07	PRECAST REINFORCED CONCRETE FLAT SLAB TOP
606001-04	CONC. CURB TYPE B & COMB. CONC. C&G
636001-02	CABLE ROAD GUARD SINGLE STRAND
701421-02	LANE CLOSURE, MULTILANE, DAY OPERATIONS ONLY
701501-05	URBAN LANE CLOSURE 2 LANE / 2 WAY - UNDIVIDED
701701-06	URBAN LANE CLOSURE MULTI LANE INTERSECTION
701801-04	LANE CLOSURE MULTI LANE 1 OR 2 WAY + CROSSWALK OR SW CLOSURE
701901-01	TRAFFIC CONTROL DEVICES
780001-02	TYPICAL PAVEMENT MARKINGS
781001-03	TYPICAL APPLICATIONS RAISED REFLECTIVE PAVEMENT MARKERS
886001-01	DETECTOR LOOP INSTALLATIONS

DESIGN DESIGNATION

DESIGN DESIGNATION	DESIGN DESIGNATION
SHERIDAN ROAD (FAU 2865)	KEDZIE STREET
FUNCTIONAL CLASSIFICATION = ARTERIAL	FUNCTIONAL CLASSIFICATION = LOCAL
DESIGN SPEED = 30 MPH	DESIGN SPEED = 25 MPH
POSTED SPEED = 30 MPH	POSTED SPEED = 25 MPH

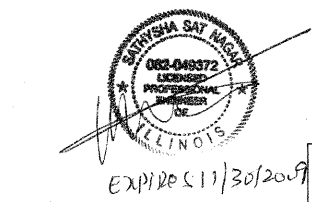
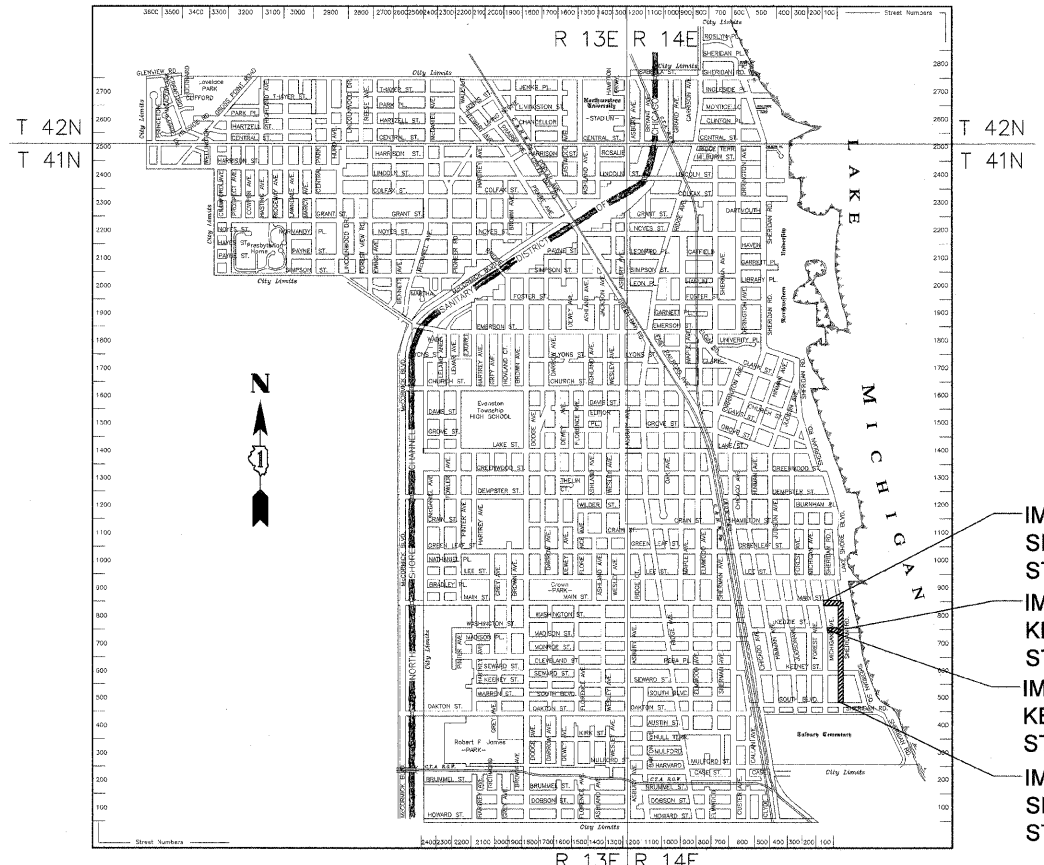
TRAFFIC DATA:

TRAFFIC DATA:	TRAFFIC DATA:
ADT = 17,000 (2007)	ADT = 500 (2007)



FULL SIZE PLANS HAVE BEEN PREPARED USING STANDARD ENGINEERING SCALES. REDUCED SIZED PLANS WILL NOT CONFORM TO STANDARD SCALES. IN MAKING MEASUREMENTS ON REDUCED PLANS, THE ABOVE SCALES MAY BE USED.

J.U.L.I.E.
JOINT UTILITY LOCATION INFORMATION FOR EXCAVATION
1-800-892-0123
OR 811



- IMPROVEMENT ENDS SHERIDAN ROAD STA. 130+28
- IMPROVEMENT ENDS KEDZIE STREET STA. 4+87
- IMPROVEMENT BEGINS KEDZIE STREET STA. 0+68
- IMPROVEMENT BEGINS SHERIDAN ROAD STA. 102+44

STATE OF ILLINOIS
DEPARTMENT OF TRANSPORTATION
DIVISION OF HIGHWAYS

APPROVED: 5/22 2009
Paul Schiele
CITY OF EVANSTON, CITY ENGINEER

PASSED: MAY 29 2009
Christopher Holt
DISTRICT ONE ENGINEER OF LOCAL ROADS & STREETS

RELEASING FOR BID BASED ON LIMITED REVIEW: MAY 29, 2009
Diana M. O'Keefe
DEPUTY DIRECTOR OF HIGHWAYS, REGION ENGINEER

PRINTED BY THE AUTHORITY
OF THE STATE OF ILLINOIS

CONTRACT NO. 63189

GROSS LENGTH = 2,784 FT. = 0.527 MILE
NET LENGTH = 2,784 FT. = 0.527 MILE

PLANS PREPARED BY: CITY OF EVANSTON PUBLIC WORKS DEPARTMENT TRANSPORTATION AND ENGINEERING DIVISION PHONE: (847) 866-2924

IDOT ASSOCIATE FIELD ENGINEER: KEVIN STALLWORTH, P.E. 847-705-4169

PROJECT MANAGER: SAT NAGAR 847-866-2924