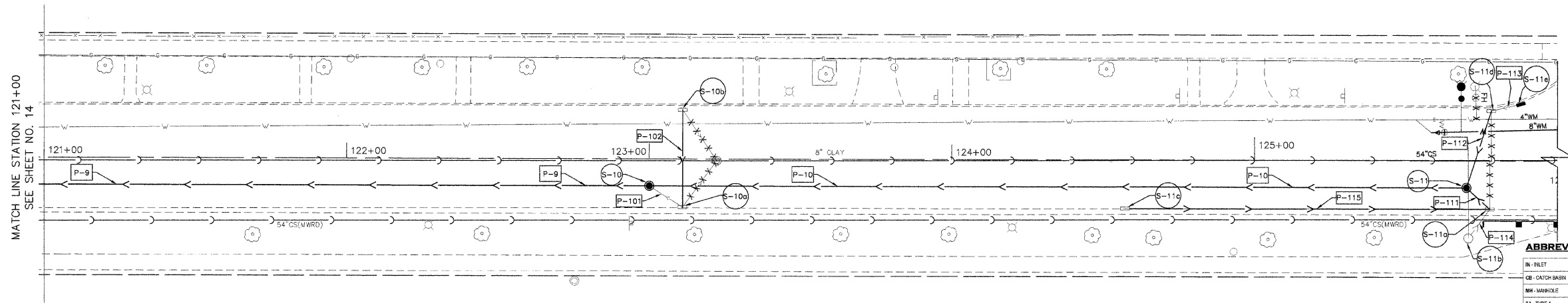


SHERIDAN ROAD
SOUTH BOULEVARD TO MAIN STREET



ABBREVIATIONS:

IN - INLET	HC - HIGH CAPACITY INLET
CB - CATCH BASIN	EX. CB - EXISTING CATCH BASIN
MM - MANHOLE	R - TO BE RECONSTRUCTED
TA - TYPE A	TIF - TYPE I FRAME
CL - CLOSED LID	RS - RELIEF SEWER, ANN TO STORM SEWER
MS - TYPE MS GRATE (MANE)	T&B - CURB BACK HEIGHT ADJUSTS FROM 3.5' TO 0'
MS - TYPE MS GRATE (MWD)	MIG - TYPE MI GRATE (MUSCADA)
7535 - EAST JORDAN IRON WORKS DESIGNATION	7545 - EAST JORDAN IRON WORKS DESIGNATION

STRUCTURE SCHEDULE

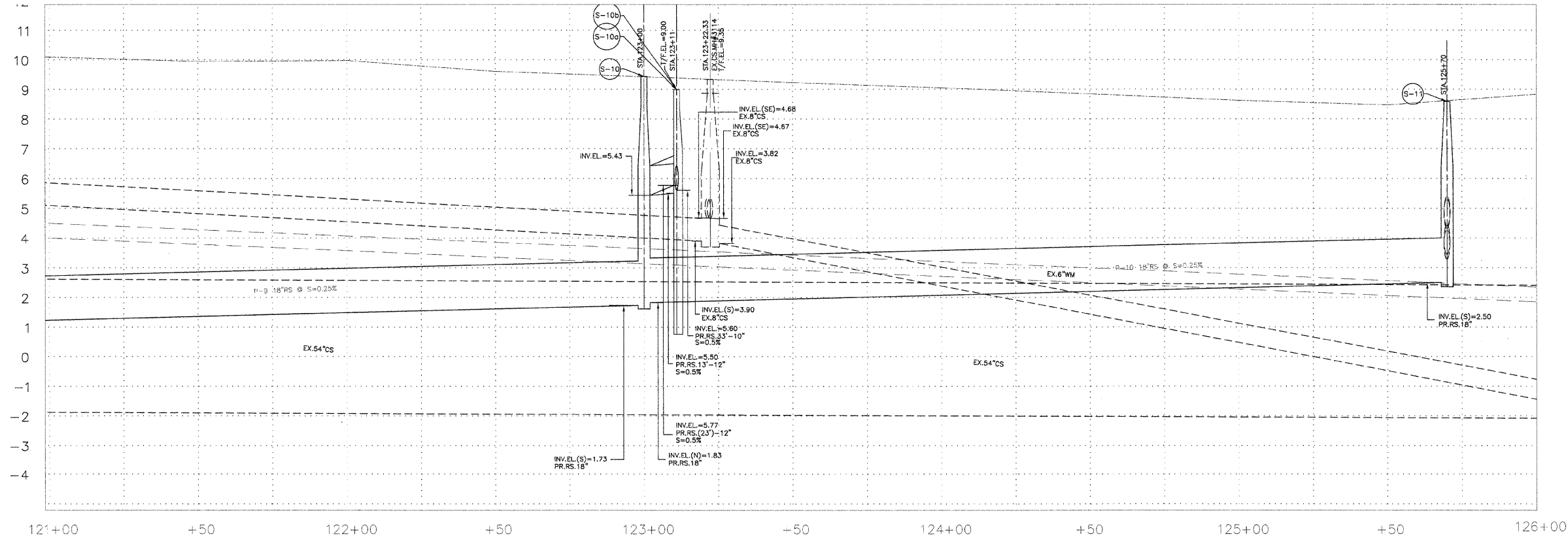
STRUCTURE NO.	STATION	OFFSET	STRUCTURE TYPE	DIA. (FT)	RM ELEV.	INVERTS										
						N	S	E	W	NE	NW	SE	SW			
S-10	123+00.00	8.0RT	MH TA TIF CL	4.0'	9.32	1.83	1.73			5.43						
S-10a	123+11.05	15.88RT	EX. CB	4.0'	9.00					5.68						
S-10b	123+11.05	18.20LT	EX. CB	4.0'	8.99				5.77							PLUG
S-11	125+70.00	9.30RT	MH TA TIF CL	4.0'	8.34		2.6			4.33	2.30					
S-11a	125+71.70	16.16RT	EX. CB	4.0'												EX.
S-11b	125+70.00	25.66RT	EX. IN	2.0'												EX.
S-11c	124+57.25	18.76RT	EX. HCl	2.0x3.0'												EX.
S-11d	125+70.30	18.90LT	EX. CB R 8x10 T&B	4.0'												3.85 3.45
S-11e	125+48.30	19.92LT	HC M90 T40 T&B	2.0x3.0'	8.42											3.8

PIPESCHEDULE

PIPE NO.	FROM STRUCTURE	TO STRUCTURE	MATERIAL	TYPE	LENGTH (FT)	DIA. (IN)	UPPER INVERT	LOWER INVERT	SLOPE	TYP
P-9	S-3	S-10	RCP/CL	2	332	18	1.73	0.91	0.26%	451
P-10	S-10	S-11	RCP/CL	2	270	18	2.50	1.83	0.26%	274
P-101	S-10	S-10a	DP/CL	SPECIAL	13	12	2.90	2.43	0.60%	5
P-102	S-10a	S-10b	DP/CL	SPECIAL	23	10	5.77	5.60	0.60%	5
P-111	S-11	S-11a	DP/CL	SPECIAL	14	12	4.40	4.33	0.60%	4
P-112	S-11	S-11b	DP/CL	SPECIAL	29	12	3.45	3.30	0.60%	4
P-113	S-11a	S-11b	DP/CL	SPECIAL	10	12	3.64	3.55	0.60%	3
P-114	S-11a	S-11c	EXIST							
P-115	S-11a	S-11e	EXIST							

NOTES:

- ALL ABANDONED SEWERS AND/OR EXISTING REMOVED SEWERS FROM THIS EXISTING STRUCTURES SHALL BE FLOODED AT BOTH ENDS WITH A MINIMUM TWO FOOT (2') LONG NON-SUBSIDING CONCRETE OR METAL FLUOR (SEE DETAIL SHEET 22)
- ALL EXISTING SEWERS CONNECTING TO PROPOSED STRUCTURES AND PROPOSED STRUCTURES CONNECTING INTO EXISTING STRUCTURES MUST BE A.S.T.M. C-921 (SEE DETAIL SHEET 22)



PLANS PREPARED BY:
CITY OF EVANSTON
PUBLIC WORKS DEPARTMENT TRANSPORTATION
AND ENGINEERING DIVISION
PHONE: (847) 866-2924

DESIGNED	— DSM, AA	REVISED	— 5/20/09 PER MWRD
DRAWN	— DSM	REVISED	— 5/20/09 PER IDCT
CHECKED	— SN, PC	REVISED	—
DATE	— 2 / 3 / 2009	REVISED	—

STATE OF ILLINOIS
DEPARTMENT OF TRANSPORTATION

RELIEF SEWER IMPROVEMENT PLANS
SHERIDAN ROAD
SCALE: 1" = 20'
SHEET NO. 15 OF 31 SHEETS
STA. 121+00 TO STA. 126+00

F.A.U. RTE.	SECTION	COUNTY	TOTAL SHEETS	SHEET NO.
2865	03-00250-01-PV	COOK	31	15
CONTRACT NO. 63189			ILLINOIS FED. AID PROJECT	