

Index of Sheets:

1. Cover Sheet
2. General Notes and Summary of Quantities
3. Typical Sections and Overall Plan
4. FAU 4082 Wondermere Road Sta 100+00 to 129+00
5. FAU 4082 Wondermere Road Sta 129+00 to 158+11
6. District One Butt Joint and HMA Taper Detail

State Standards:

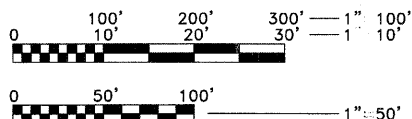
- 000001-05 STANDARD SYMBOLS, ABBREVIATIONS AND PATTERNS
- 701301-03 LANE CLOSURE, 2L, 2W, SHORT TIME OPERATIONS
- 701501-05 URBAN LANE CLOSURE, 2L, 2W, UNDIVIDED
- 701901-01 TRAFFIC CONTROL DEVICES
- 780001-02 TYPICAL PAVEMENT MARKINGS

TRAFFIC DATA

ADT: 2000 (2008)

POSTED SPEEDS

POSTED 25 MPH STA. 100+00 TO STA. 125+50
 POSTED 35 MPH STA. 125+50 TO STA. 158+11



FULL SIZE PLANS HAVE BEEN PREPARED USING STANDARD ENGINEERING SCALES, REDUCED SIZED PLANS WILL NOT CONFORM TO STANDARD SCALES, IN MAKING MEASUREMENTS ON REDUCED PLANS, THE ABOVE SCALES MAY BE USED.

WARNING

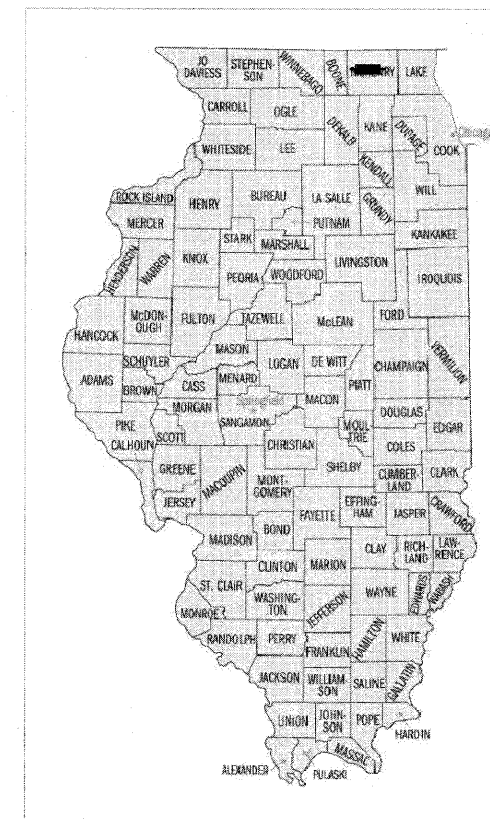


CALL BEFORE YOU DIG

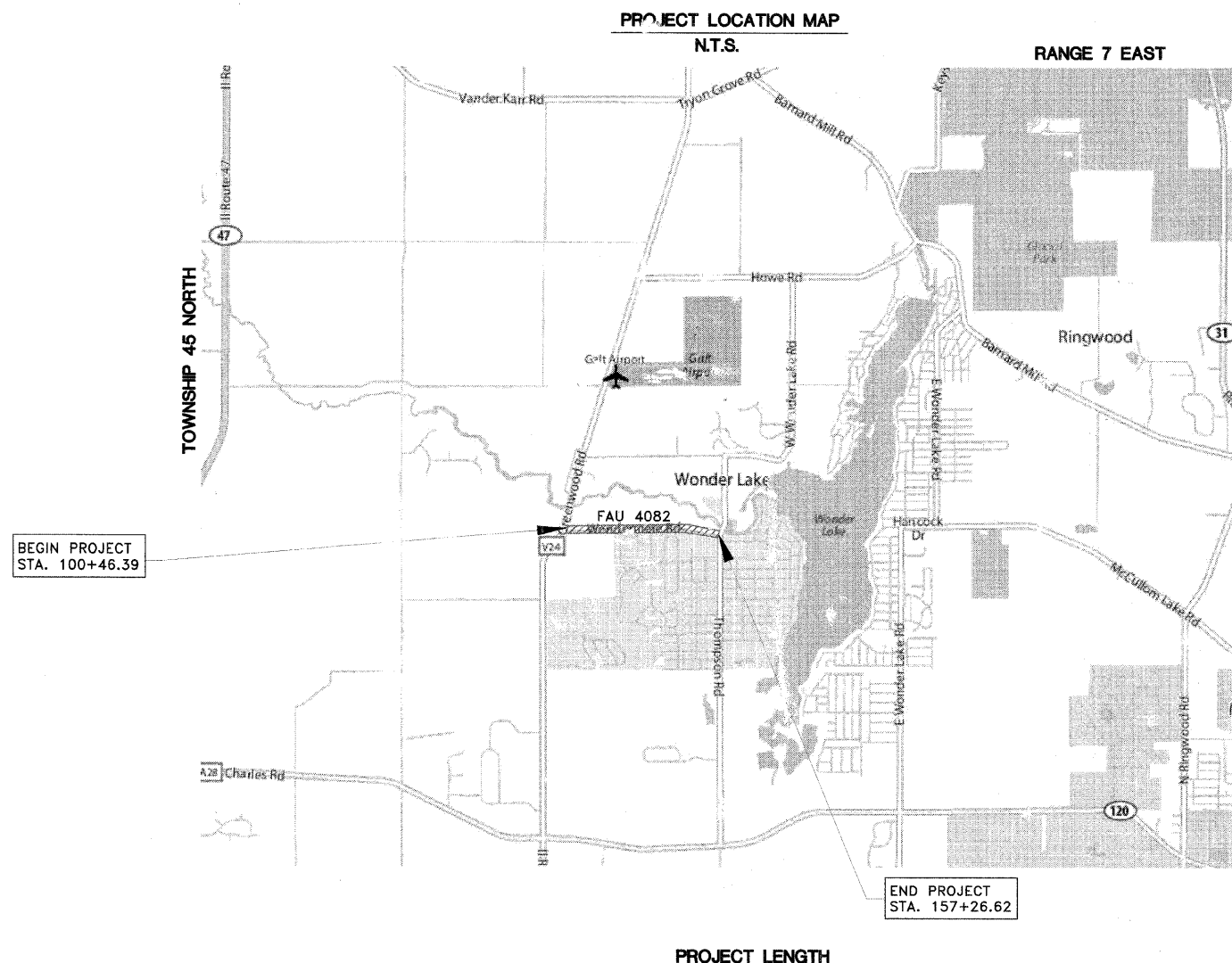
State Of Illinois
Department Of Transportation
Division Of Highways
American Recovery and Reinvestment Act of 2009

FAU 4082 WONDERMERE ROAD
RESURFACING PROJECT
Village of Greenwood
McHenry County
 LOCAL AGENCY PAVEMENT PRESERVATION
 SECTION NUMBER: 09-00001-00-RS
 PROJECT NUMBER: ARA-9003(317)
 STATE JOB NO.: C-91-624-09

ROUTE NO.	LOCAL AGENCY	COUNTY	TOTAL SHEETS	SHEET NO.
FAU 4082	Greenwood	McHenry	6	1
LOCAL AGENCY PAVEMENT PRESERVATION				
CONTRACT: 63192		SECTION: 09-00001-00-RS		



LOCATION OF SECTION, INDICATED THUS: [Symbol]



PROJECT LENGTH
 GROSS LENGTH OF PROJECT = 5680.23 FT (1.076 MI)
 NET LENGTH OF IMPROVEMENT (WONDERMERE ROAD) = 5680.23 FT (1.076 MI)

STATE OF ILLINOIS
DEPARTMENT OF TRANSPORTATION
DIVISION OF HIGHWAYS

SUBMITTED May 22 2009
William J. Tward
 VILLAGE PRESIDENT - GREENWOOD

APPROVED May 29 2009
C. Holt CHRISTOPHER HOLT
 DISTRICT ENGINEER OF LOCAL ROADS AND STREETS

APPROVED MAY 29, 2009
Diana M. O'Keefe
 DEPUTY DIRECTOR OF HIGHWAYS, REGION 2 ENGINEER

11/09
 LIC. EXP. DATE 5/22/09
Frank C. Cuda
 SIGNATURE



PRINTED BY THE AUTHORITY
OF THE STATE OF ILLINOIS

CONTRACT NUMBER: 63192

SCHEFFLOW ENGINEERS
 1814 GRANDSTAND PLACE
 ELGIN, ILLINOIS 60123
 (847) 697-7095
 ASSOCIATE FIELD ENGINEER: KEVIN S. ILLWORTH (847) 705-4162

ROUTE NO.	LOCAL AGENCY	COUNTY	TOTAL SHEETS	SHEET NO.
FAU 4082	Greenwood	McHenry	6	2
LOCAL AGENCY PAVEMENT PRESERVATION				
CONTRACT: 63192			SECTION: 09-00001-00-RS	

Summary of Quantities

NO.	ITEM NO.	DESCRIPTION	UNIT	QUANTITY
1.	35100100 *	AGGREGATE BASE COURSE, TYPE A	TON	910
2.	35800100	PREPARATION OF BASE	SQ YD	4134
3.	40600100	BITUMINOUS MATERIALS (PRIME COAT)	GALLON	3684
4.	40600300	AGGREGATE (PRIME COAT)	TON	35
5.	40600625	LEVELING BINDER (MACHINE METHOD) N50	TON	872
6.	40600982	HOT-MIX ASPHALT SURFACE REMOVAL, BUTT JOINT	SQ YD	308
7.	40603310	HOT MIX ASPHALT SURFACE COURSE, MIX "C" N50	TON	1551
8.	44000198 *	HOT-MIX ASPHALT SURFACE REMOVAL, VARIABLE DEPTH	SQ YD	4134
9.	44212900 *	PAVEMENT PATCHING (PARTIAL DEPTH)	SQ YD	1000
10.	48101200	AGGREGATE SHOULDERS TYPE B	TON	204
11.	67100100	MOBILIZATION	L SUM	1
12.	70101700 *	TRAFFIC CONTROL AND PROTECTION	L SUM	1
13.	78000100 Δ	THERMOPLASTIC PAVEMENT MARKING - LETTERS AND SYMBOLS	SQ FT	54
14.	78000200 Δ	THERMOPLASTIC PAVEMENT MARKING - LINE 4"	FOOT	6810
15.	78000400 Δ	THERMOPLASTIC PAVEMENT MARKING - LINE 6"	FOOT	100
16.	78000650 Δ	THERMOPLASTIC PAVEMENT MARKING - LINE 24"	FOOT	26

* INDICATES SPECIAL PROVISION

Δ SPECIALTY ITEMS

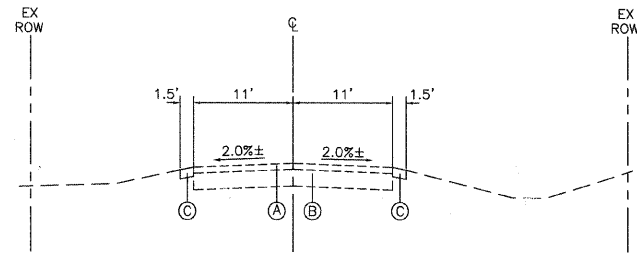
General Notes:

These Special Conditions supplement the plans and specification. Where they are in conflict with the plans and specifications they shall govern.

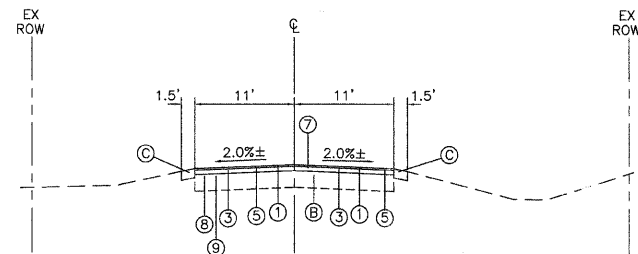
1. **REFERENCED SPECIFICATIONS**
 THE FOLLOWING SPECIFICATIONS ARE INCLUDED BY REFERENCE. ALL CONSTRUCTION SHALL BE IN ACCORDANCE WITH THE APPLICABLE SECTIONS EXCEPT AS MODIFIED HEREIN OR ON THE PLANS OR IN THE SPECIFICATIONS BOUND SEPARATELY:
 - ILLINOIS DEPARTMENT OF TRANSPORTATION STANDARD SPECIFICATIONS FOR ROAD AND BRIDGE CONSTRUCTION, LATEST EDITION.
 - VILLAGE OF GREENWOOD MUNICIPAL CODE.
 - ILLINOIS DEPARTMENT OF TRANSPORTATION MANUAL OF UNIFORM TRAFFIC CONTROL DEVICES.
 - ILLINOIS URBAN MANUAL STANDARDS FOR URBAN SOIL EROSION AND SEDIMENTATION CONTROL.
2. **NOTIFICATION**
 IT SHALL BE THE CONTRACTOR'S RESPONSIBILITY TO NOTIFY THE FOLLOWING:
 - IDOT DISTRICT 1, 48 HOURS PRIOR TO COMMENCEMENT OF CONSTRUCTION.
 - THE VILLAGE OF GREENWOOD 48 HOURS PRIOR TO COMMENCEMENT OF CONSTRUCTION.
 - THE ELECTRIC, TELEPHONE AND GAS UTILITIES PRIOR TO COMMENCEMENT OF CONSTRUCTION.
3. **PERMITS**
 - NO VILLAGE OF GREENWOOD PERMITS ARE REQUIRED.
4. **QUANTITIES**
 THE CONTRACTOR IS RESPONSIBLE FOR VERIFYING ALL QUANTITIES AS INDICATED ON THE PLANS. THE QUANTITIES WHICH ARE INDICATED ARE FOR BIDDING PURPOSES ONLY AND MUST BE VERIFIED. ANY DISCREPANCIES ARE TO BE REPORTED TO THE ENGINEER.
5. **EXAMINATION OF THE SITE**
 THE CONTRACTOR IS RESPONSIBLE FOR EXAMINING ALL SITE CONDITIONS PRIOR TO COMMENCEMENT OF CONSTRUCTION AND IS TO COMPARE THE SITE CONDITIONS AS INDICATED ON THE ENGINEERING PLANS.
6. **ENGINEERING PLANS**
 THE PROPOSED IMPROVEMENTS MUST BE CONSTRUCTED IN ACCORDANCE WITH THE ENGINEERING PLANS. THE CONSTRUCTION DETAILS, AS PRESENTED ON THE PLANS, MUST BE FOLLOWED BY THE CONTRACTOR. PROPER CONSTRUCTION TECHNIQUES MUST BE FOLLOWED ON THOSE IMPROVEMENTS INDICATED ON THE ENGINEERING PLANS.
7. **LOCATION OF EXISTING UNDERGROUND UTILITIES**
 THE LOCATION OF VARIOUS EXISTING UNDERGROUND UTILITIES WHICH ARE SHOWN ON THE PLANS ARE FOR INFORMATION ONLY AND REPRESENT THE BEST KNOWLEDGE OF THE ENGINEER. IT SHALL BE THE CONTRACTOR'S RESPONSIBILITY TO VERIFY THEIR LOCATIONS AND ELEVATIONS PRIOR TO THE CONSTRUCTION OPERATIONS.
8. **DAMAGE TO PROPERTY**
 ANY EXISTING PAVEMENT, SIDEWALK, DRIVEWAYS, ETC. DAMAGED BY THE CONTRACTOR'S OPERATIONS AND NOT CALLED FOR IN THE CONTRACT TO BE REMOVED SHALL BE REPLACED AT THE EXPENSE OF THE CONTRACTOR.
9. **CONTRACTOR TO VERIFY ELEVATIONS**
 THE CONTRACTOR SHALL VERIFY ALL ELEVATIONS PRIOR TO THE START OF WORK AND, IF THERE ARE ANY DISCREPANCIES, IS TO NOTIFY THE ENGINEER AT ONCE. NO WORK SHALL BE DONE UNTIL THE DISCREPANCY IS RESOLVED.

STATE OF ILLINOIS DEPARTMENT OF TRANSPORTATION	#	DATE	REMARKS	SCHEFLOW ENGINEERS 1814 GRANDSTAND PLACE ELGIN, ILLINOIS 60123 (847) 697-7095 FIRM LICENSE NUMBER: 124-001104	Village of Greenwood, Illinois 09-00001-00-RS FAU 4082 Wondermere Road Resurfacing	SCALE	DATE
					NONE	4-30-19	
					P.C.S.	4510	
					F.C.C.	2 of 6	
15-21-09 PER IDOT REVIEW				GENERAL NOTES AND SUMMARY OF QUANTITIES			

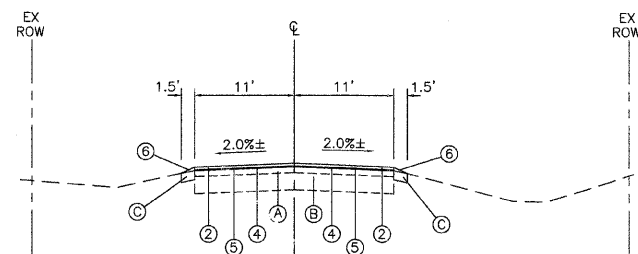
ROUTE NO.	LOCAL AGENCY	COUNTY	TOTAL SHEETS	SHEET NO.
FAU 4082	Greenwood	McHenry	6	3
LOCAL AGENCY PAVEMENT PRESERVATION				
CONTRACT: 63192			SECTION: 09-00001-00-RS	



EXISTING TYPICAL SECTION
WONDERMERE ROAD



PROPOSED TYPICAL SECTION - REMOVAL
WONDERMERE ROAD
FROM STA. 103+70 TO STA. 118+50
FROM STA. 122+50 TO STA. 125+00



PROPOSED TYPICAL SECTION - OVERLAY
WONDERMERE ROAD
FROM STA. 100+46.39 TO STA. 103+70
FROM STA. 118+50 TO STA. 122+50
FROM STA. 125+00 TO STA. 157+26.62

EXISTING LEGEND

- (A) ASPHALT PAVEMENT, 3"-4"±
- (B) AGGREGATE BASE, 12"
- (C) AGGREGATE SHOULDER

PROPOSED LEGEND

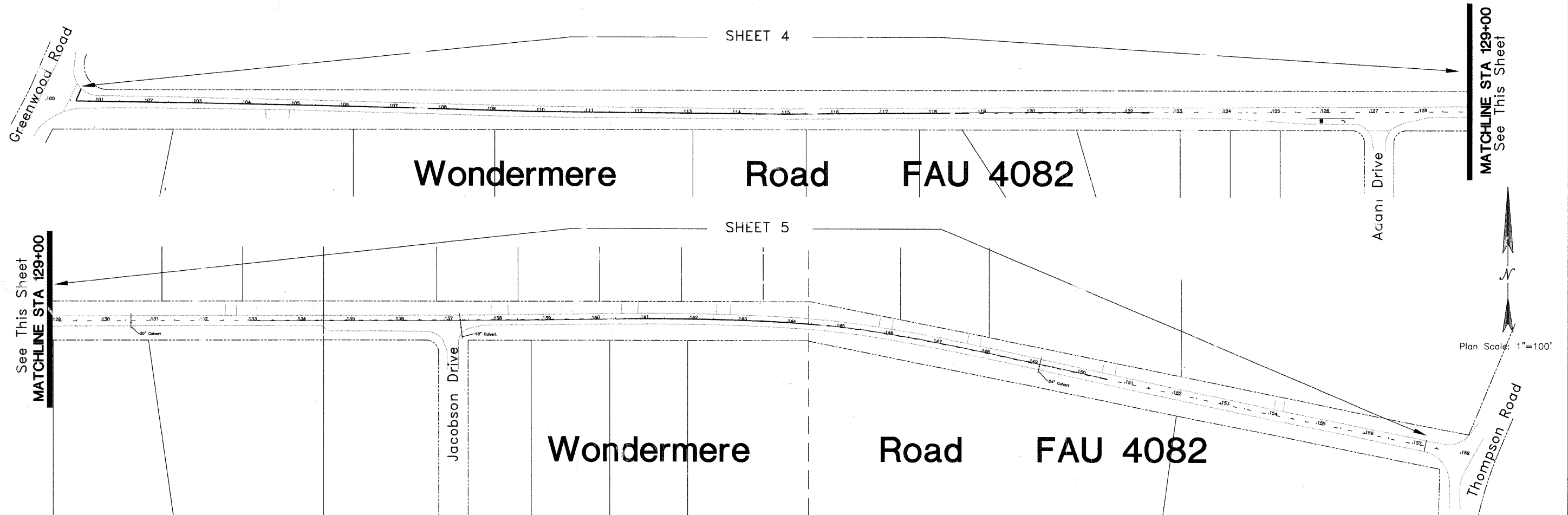
- (1) HOT-MIX ASPHALT SURFACE COURSE, MIX C, IL-9.5, N50, 1 1/2"
- (2) HOT-MIX ASPHALT SURFACE COURSE, MIX C, IL-9.5, N50, 2"
- (3) LEVELING BINDER (MACHINE METHOD), N50, 1 1/4"
- (4) LEVELING BINDER (MACHINE METHOD), N50, 3/4"
- (5) BITUMINOUS MATERIALS (PRIME COAT)
- (6) PROPOSED AGGREGATE SHOULDER, TYPE B
- (7) HOT-MIX ASPHALT SURFACE REMOVAL, VARIABLE DEPTH, 2" TO 4"
- (8) AGGREGATE BASE COURSE, THICKNESS TO BE DETERMINED BY ENGINEER
- (9) PREPARATION OF BASE

HOT-MIX ASPHALT MIXTURE REQUIREMENTS

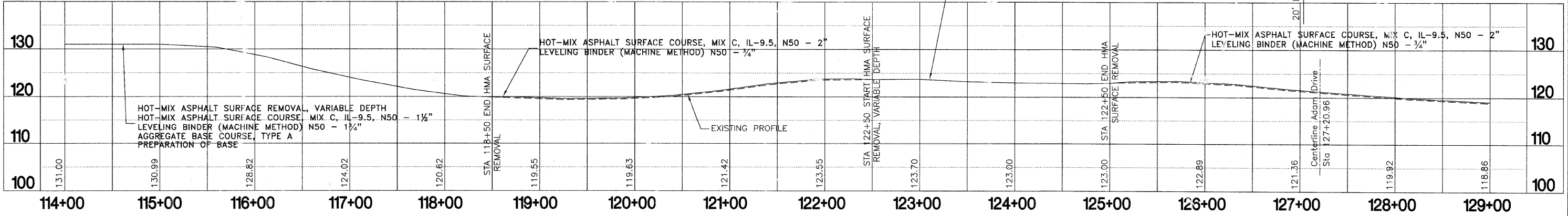
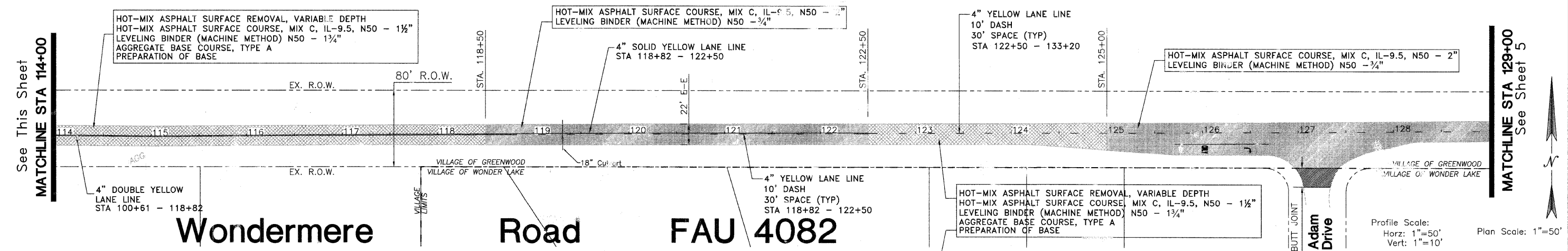
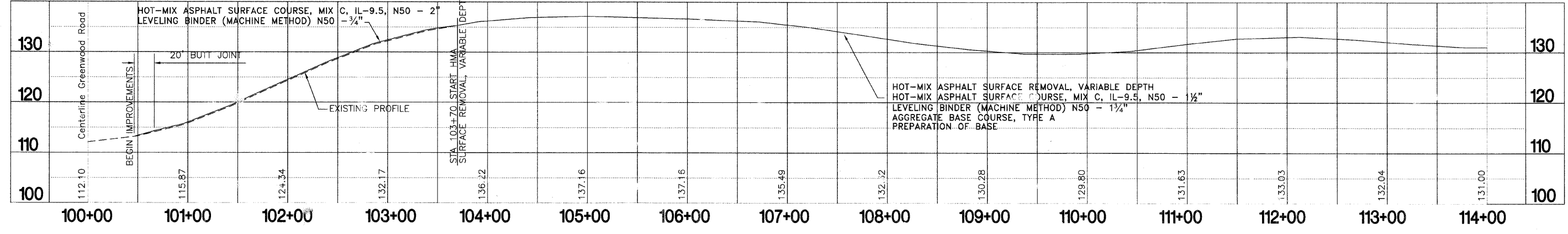
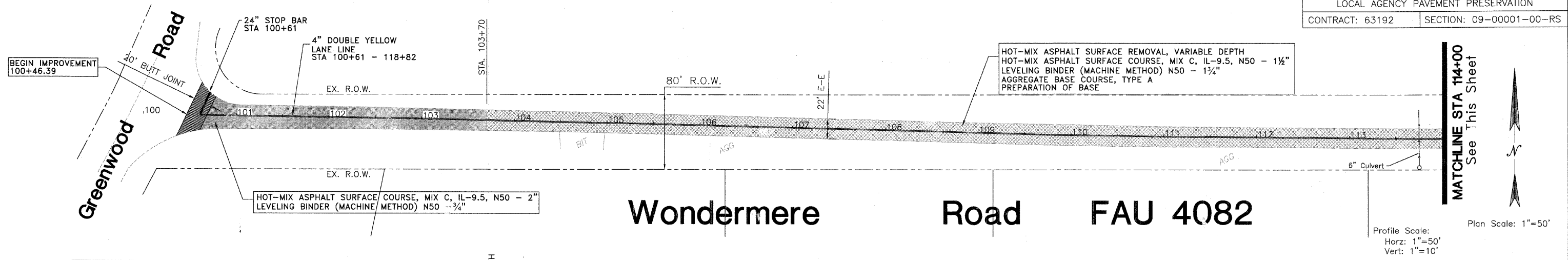
MIXTURE TYPE	AC TYPE	AIR VOIDS
HOT-MIX ASPHALT SURFACE COURSE, MIX "C" N50 (IL-9.5)	PG 64-22	4% @ 50 GYR.
LEVELING BINDER (MACHINE METHOD) N50	PG 64-22 **	4% @ 50 GYR.
PAVEMENT PATCHING	PG 64-22 **	4% @ 70 GYR.

** WHEN MORE THAN 15% RAP USED, A SOFTER ASPHALT BINDER (PG-58-22) MAY BE REQUIRED AS DETERMINED BY THE ENGINEER.

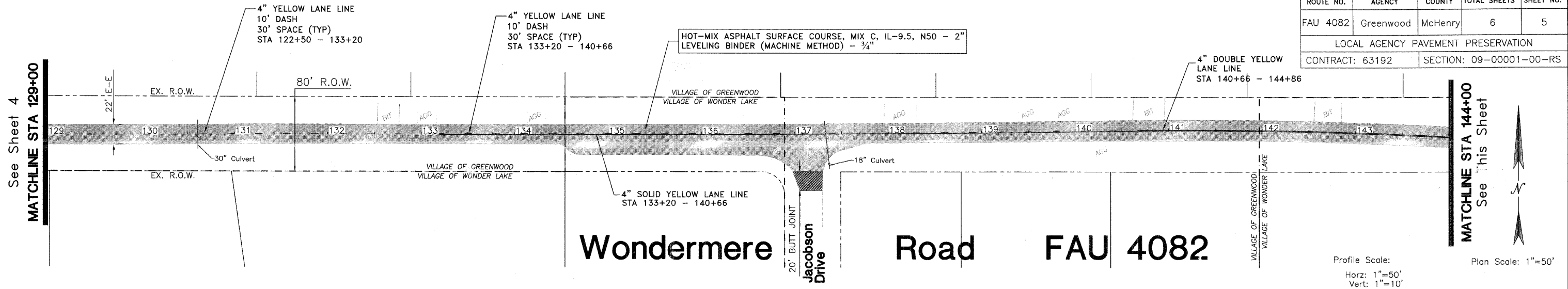
UNIT WEIGHT USED TO CALCULATE HOT-MIX ASPHALT - 112 LBS/SQ YD/IN.



STATE OF ILLINOIS DEPARTMENT OF TRANSPORTATION	#	DATE	REMARKS	SCHEFFLOW ENGINEERS 1814 GRANDSTAND PLACE ELGIN, ILLINOIS 60123 (847) 697-7095 FIRM LICENSE NUMBER: 184-001104	Village of Greenwood, Illinois 09-00001-00-RS FAU 4082 Wondermere Road Resurfacing TYPICAL SECTION / OVERALL PLAN	SCALE	DATE
						NONE	4-30-09
						DRAWN BY	FILE NO.
						P.C.S.	4510
			CHECKED BY	SHEET NO.			
			F.C.C.	3 of 6			

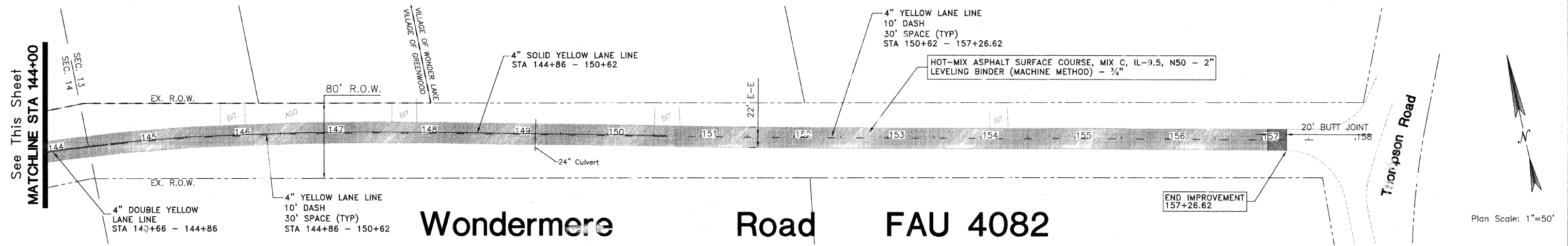
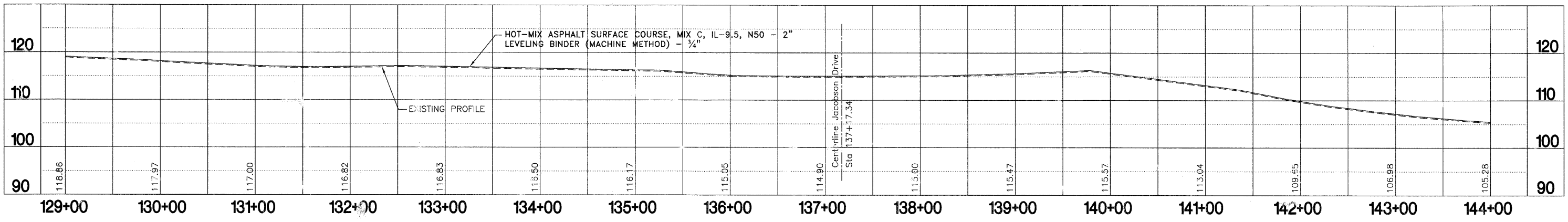


ROUTE NO.	LOCAL AGENCY	COUNTY	TOTAL SHEETS	SHEET NO.
FAU 4082	Greenwood	McHenry	6	5
LOCAL AGENCY PAVEMENT PRESERVATION				
CONTRACT: 63192			SECTION: 09-00001-00-RS	



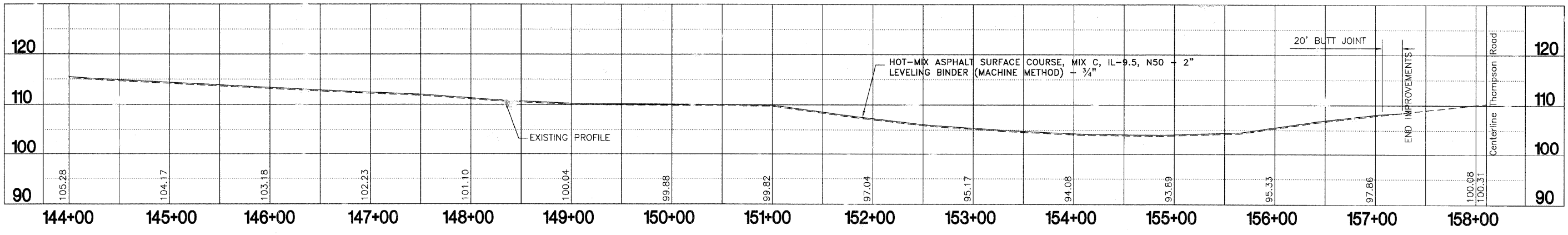
Wondermere Road FAU 4082

Profile Scale:
 Horz: 1"=50'
 Vert: 1"=10'
 Plan Scale: 1"=50'

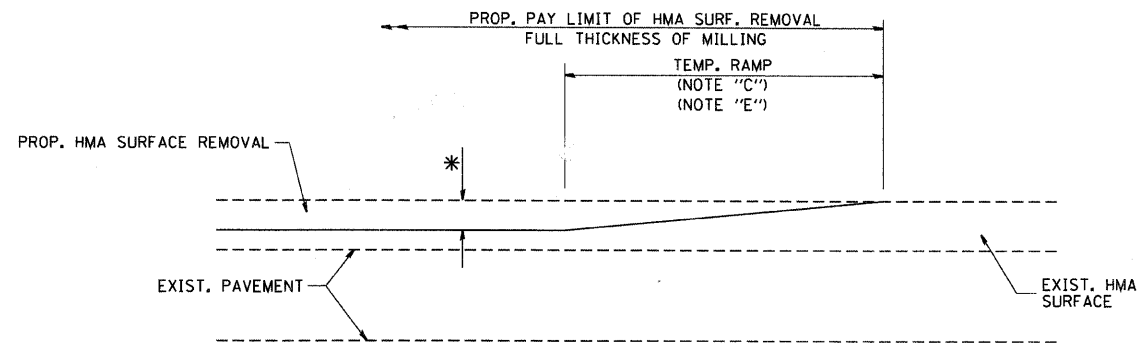


Wondermere Road FAU 4082

Profile Scale:
 Horz: 1"=50'
 Vert: 1"=10'
 Plan Scale: 1"=50'

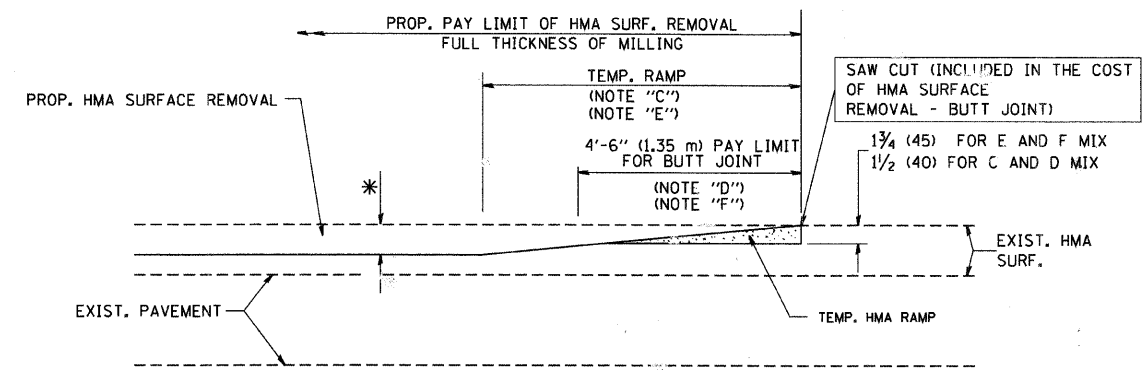


STATE OF ILLINOIS DEPARTMENT OF TRANSPORTATION	#	DATE	REMARKS
SCHEFFLOW ENGINEERS 1814 GRANDSTAND PLACE ELGIN, ILLINOIS 60123 (847) 697-7095 FIRM LICENSE NUMBER: 184-001104		Village of Greenwood, Illinois 09-00001-00-RS FAU 4082 Wondermere Road Resurfacing Station 129+00 to 158+11	
SCALE 1"=50'	DATE 4-30-09	DRAWN BY P.C.S.	FILE NO. 4510
CHECKED BY F.C.C.	SHEET NO. 5 of 6		



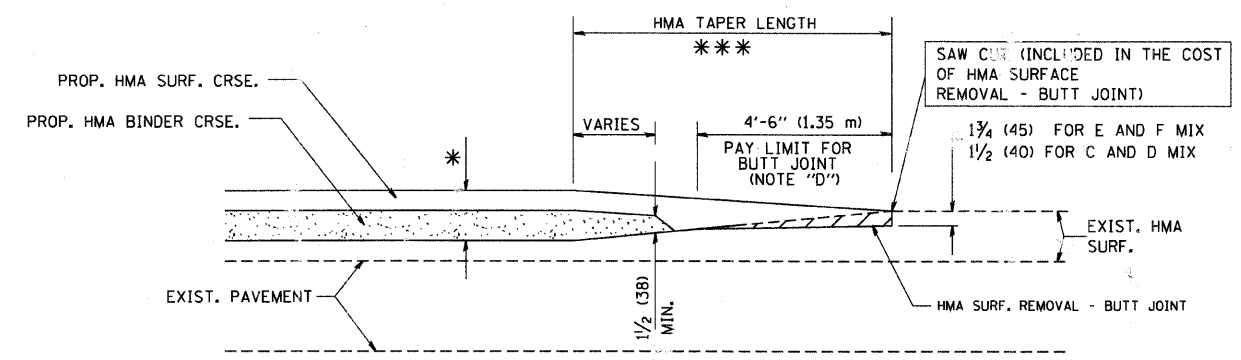
MILLED TEMPORARY RAMP
(FOR BUTT JOINT AND HMA TAPER SEE DETAIL BELOW)

OPTION 1

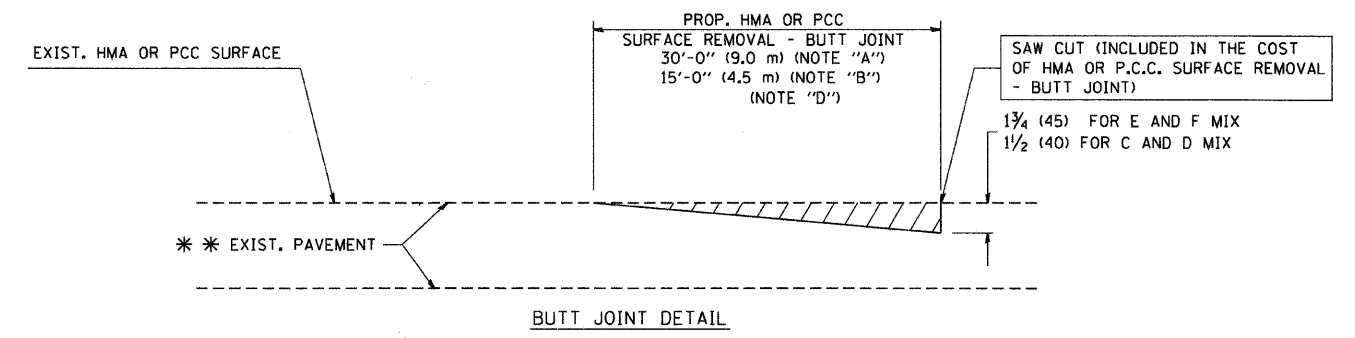


HMA CONSTRUCTED TEMPORARY RAMP
(FOR BUTT JOINT AND HMA TAPER SEE DETAIL BELOW)

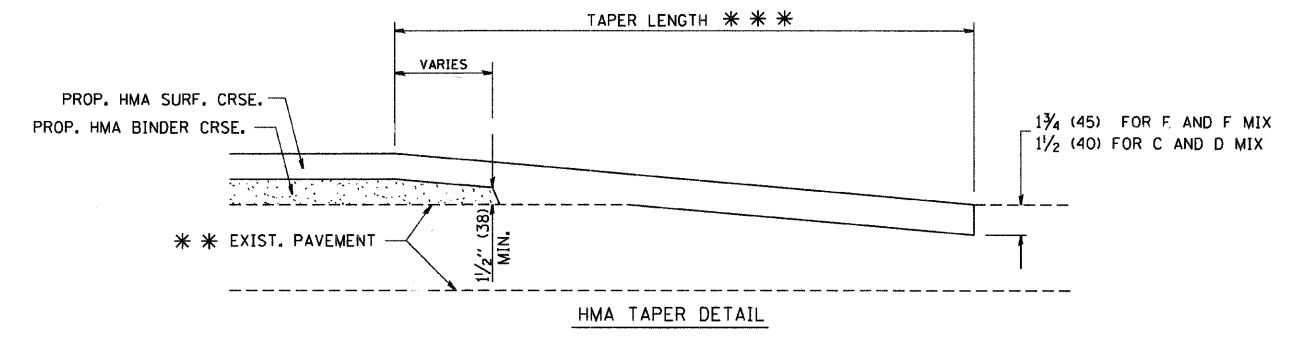
OPTION 2
TYPICAL TEMPORARY RAMP



BUTT JOINT AND HMA TAPER
TYPICAL BUTT JOINT AND HMA TAPER FOR MILLING AND RESURFACING



BUTT JOINT DETAIL



HMA TAPER DETAIL

TYPICAL BUTT JOINT AND HMA TAPER FOR RESURFACING ONLY

*** PC CONCRETE, HMA OR HMA RESURFACED PAVEMENT.

NOTES

- A: MAINLINE ROADWAYS AND MAJOR SIDE ROADS.
 - B: MINOR SIDE ROADS.
 - C: THE TEMP. RAMP SHALL BE CONSTRUCTED IMMEDIATELY UPON REMOVAL OF THE EXISTING HMA SURFACE.
 - D: THE BUTT JOINT SHALL BE CONSTRUCTED IMMEDIATELY PRIOR TO PLACING THE PROPOSED HMA COURSES.
 - E: TAPER THE TEMP. RAMP AT A RATE OF 3'-0" (900 mm) PER 1 INCH (25 mm) OF MILLING THICKNESS.
 - F: INSTALLATION AND REMOVAL OF THE 4'-6" (1.35 m) TEMP. RAMP IS INCLUDED IN COST OF HMA SURFACE REMOVAL - BUTT JOINT
 - G: SEE ARTICLE 406.08 AND 406.14 OF THE STANDARD SPECIFICATIONS FOR "HMA AND/OR PCC SURFACE REMOVAL, BUTT JOINT".
- * SEE TYPICAL SECTIONS FOR MILLING THICKNESS.
- *** 20'-0" (6.1 m) PER 1 (25) RESURFACING (NOTE "A")
10'-0" (3.0 m) PER 1 (25) RESURFACING (NOTE "B")

BASIS OF PAYMENT:

THE BUTT JOINT WILL BE PAID FOR AT THE CONTRACT UNIT PRICE PER SQUARE YARD (SQUARE METER) FOR "HOT-MIX ASPHALT SURFACE REMOVAL - BUTT JOINT" OR FOR "PORTLAND CEMENT CONCRETE SURFACE REMOVAL - BUTT JOINT".

ALL DIMENSIONS ARE IN INCHES (MILLIMETERS) UNLESS OTHERWISE SHOWN.

FILE NAME = W:\ndiststd\22x34\bd32.dgn	USER NAME = geglionobt	DESIGNED - M. DE YONG	REVISED - R. SHAH 10-25-94
		DRAWN -	REVISED - A. ABBAS 03-21-97
	PLOT SCALE = 50.0000' / IN.	CHECKED -	REVISED - M. GOMEZ 04-06-01
	PLOT DATE = 1/4/2008	DATE - 06-13-90	REVISED - R. BORO 01-01-07

**STATE OF ILLINOIS
DEPARTMENT OF TRANSPORTATION**

BUTT JOINT AND HMA TAPER DETAILS			
SCALE: NONE	SHEET NO. 1 OF 1 SHEETS	STA.	TO STA.

F.A. RTE.	SECTION	COUNTY	TOTAL SHEETS	SHEET NO.
	BD400-05 BD32			6
FED. ROAD DIST. NO. 1 ILLINOIS FED. AID PROJECT			CONTRACT NO.	