

STATE OF ILLINOIS
DEPARTMENT OF TRANSPORTATION
DIVISION OF HIGHWAYS

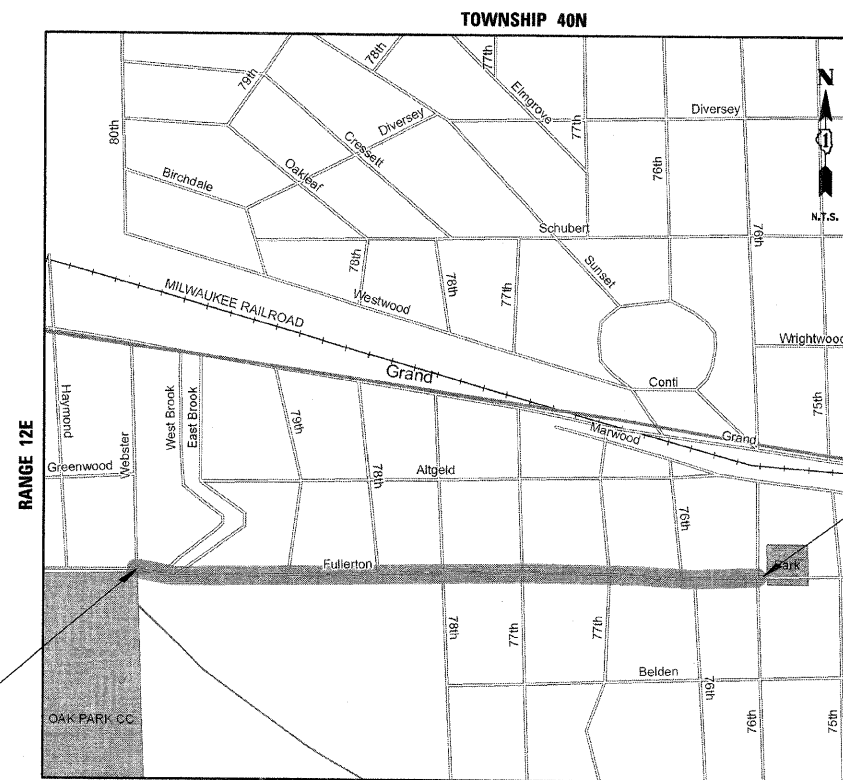
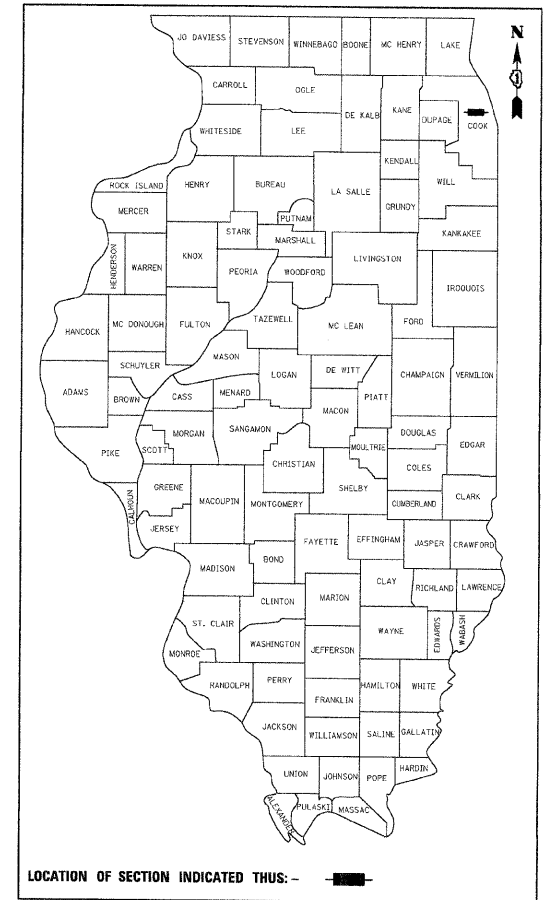
**PLANS FOR PROPOSED
FEDERAL AID HIGHWAY**

F.A.U. R.T.E.	SECTION	COUNTY	TOTAL SHEETS	SHEET NO.
1382	09-00110-00-RS	COOK	6	1
FED. ROAD DIST. NO. 1	ILLINOIS	FED. AID PROJECT		

CONTRACT NO. 63205

DESCRIPTION	INDEX OF SHEETS	SHEET NO.
TITLE SHEET		1
GENERAL NOTES, IDOT STANDARDS AND SUMMARY OF QUANTITIES		2
TYPICAL SECTIONS		3
FULLERTON AVENUE EXISTING CONDITIONS AND REMOVAL PLAN		4
FULLERTON AVENUE PROPOSED PLAN		5
CONSTRUCTION DETAILS		6

FULLERTON AVENUE (FAU 1382)
FROM WEBSTER ST. TO 76th AVE.
RESURFACING
SECTION No. 09-00110-00-RS
PROJECT No. ARA-9003 (359)
VILLAGE OF ELMWOOD PARK
COOK COUNTY
C-91-674-09



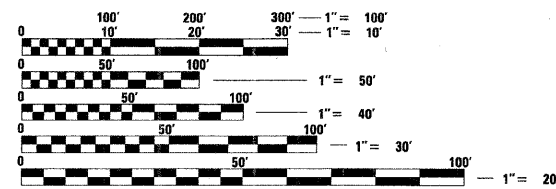
PROJECT ENDS
STA. 37 + 66

TRAFFIC DATA (FULLERTON AVENUE)
ADT (2007) = 6,300
SPEED LIMIT = 35 MPH
DESIGN DESIGNATION: LOCAL

PROJECT BEGINS
STA. 10 + 00

LOCATION MAP
N.T.S.

GROSS LENGTH OF PROJECT = 2766 ft (0.52 mi.)
NET LENGTH OF PROJECT = 2766 ft (0.52 mi.)



FULL SIZE PLANS HAVE BEEN PREPARED USING STANDARD ENGINEERING SCALES. REDUCED SIZED PLANS WILL NOT CONFORM TO STANDARD SCALES. IN MAKING MEASUREMENTS ON REDUCED PLANS, THE ABOVE SCALES MAY BE USED.

J.U.L.I.E.
JOINT UTILITY LOCATION INFORMATION FOR EXCAVATION
1-800-892-0123

CONTRACT NO. 63205

CB CHRISTOPHER B. BURKE ENGINEERING LTD.
9575 West Higgins Road, Suite 600
Rosemont, Illinois 60018 (847) 823-0500

STATE OF ILLINOIS
DEPARTMENT OF TRANSPORTATION
DIVISION OF HIGHWAYS

APPROVED May 25 2009
[Signature]
VILLAGE MANAGER
VILLAGE OF ELMWOOD PARK

PASSED MAY 29 2009
[Signature]
DISTRICT 1 ENGINEER OF LOCAL ROADS AND STREETS

RELEASING FOR
BID BASED ON
LIMITED REVIEW MAY 29 2009
[Signature]
DEPUTY DIRECTOR OF HIGHWAYS
REGION ONE ENGINEER

ORION C. GALEY
062-060829
LICENSED PROFESSIONAL ENGINEER OF ILLINOIS

[Signature]
ENGINEER

5-25-2009
DATE

ORION C. GALEY
ILLINOIS REGISTRATION No. 062-060829
EXPIRATION DATE: 11/30/2009

FIELD ENGINEER: MARTIN SOLOMON 847-705-4407

N:\ELMWOODPARK\090186\Civil\CVR_090186.SHT