

STATE OF ILLINOIS
DEPARTMENT OF TRANSPORTATION
DIVISION OF HIGHWAYS

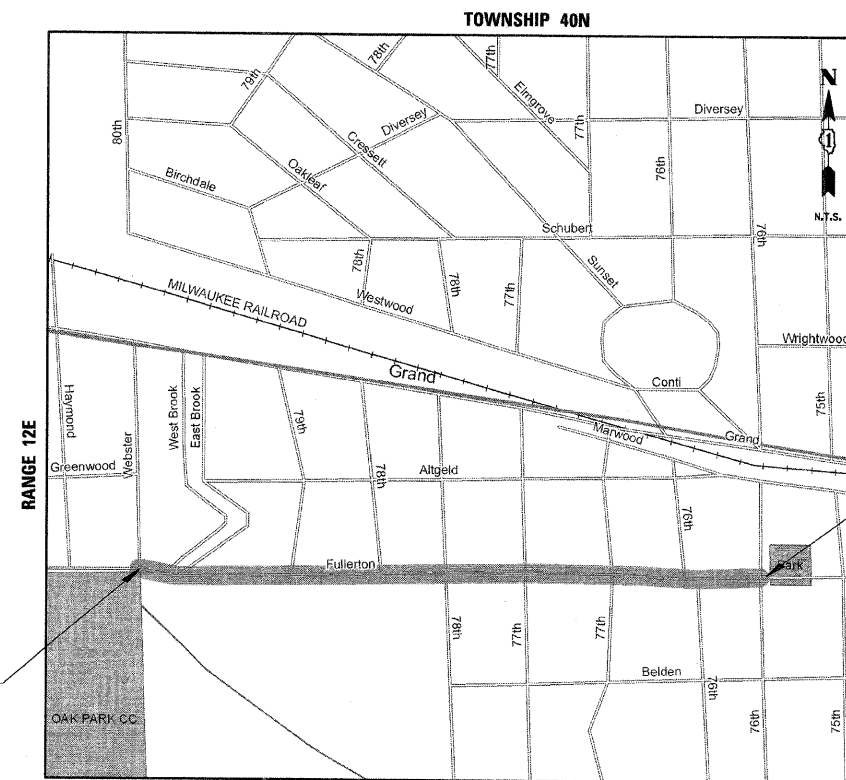
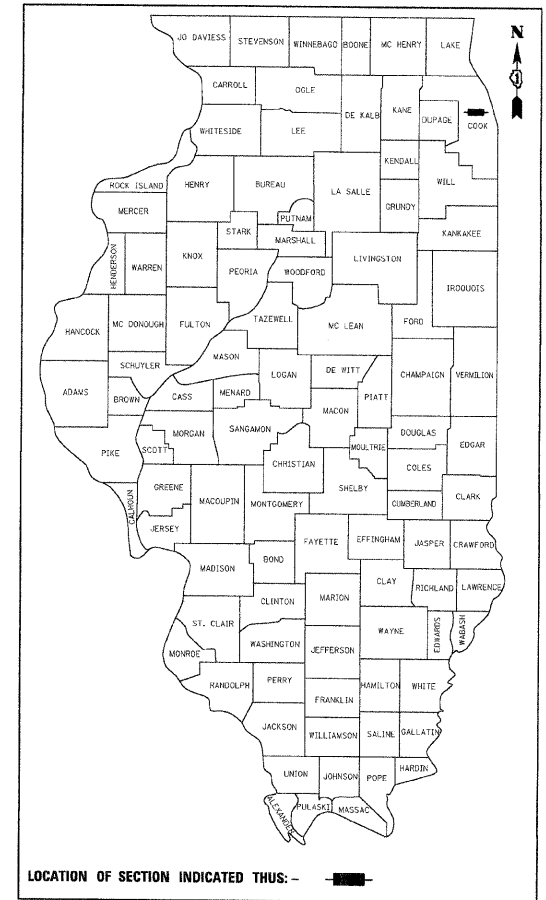
**PLANS FOR PROPOSED
FEDERAL AID HIGHWAY**

FULLERTON AVENUE (FAU 1382)
FROM WEBSTER ST. TO 76th AVE.
RESURFACING
SECTION No. 09-00110-00-RS
PROJECT No. ARA-9003 (359)
VILLAGE OF ELMWOOD PARK
COOK COUNTY
C-91-674-09

F.A.U. R.T.E.	SECTION	COUNTY	TOTAL SHEETS	SHEET NO.
1382	09-00110-00-RS	COOK	6	1
FED. ROAD DIST. NO. 1	ILLINOIS	FED. AID PROJECT		

CONTRACT NO. 63205

DESCRIPTION	INDEX OF SHEETS	SHEET NO.
TITLE SHEET		1
GENERAL NOTES, IDOT STANDARDS AND SUMMARY OF QUANTITIES		2
TYPICAL SECTIONS		3
FULLERTON AVENUE EXISTING CONDITIONS AND REMOVAL PLAN		4
FULLERTON AVENUE PROPOSED PLAN		5
CONSTRUCTION DETAILS		6



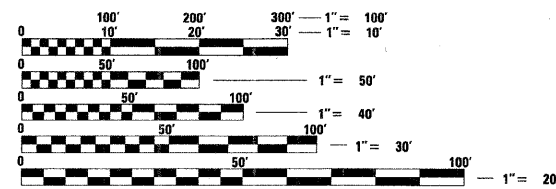
PROJECT ENDS
STA. 37 + 66

TRAFFIC DATA (FULLERTON AVENUE)
ADT (2007) = 6,300
SPEED LIMIT = 35 MPH
DESIGN DESIGNATION: LOCAL

PROJECT BEGINS
STA. 10 + 00

LOCATION MAP
N.T.S.

GROSS LENGTH OF PROJECT = 2766 ft (0.52 mi.)
NET LENGTH OF PROJECT = 2766 ft (0.52 mi.)



FULL SIZE PLANS HAVE BEEN PREPARED USING STANDARD ENGINEERING SCALES. REDUCED SIZED PLANS WILL NOT CONFORM TO STANDARD SCALES. IN MAKING MEASUREMENTS ON REDUCED PLANS, THE ABOVE SCALES MAY BE USED.

J.U.L.I.E.
JOINT UTILITY LOCATION INFORMATION FOR EXCAVATION
1-800-892-0123

CONTRACT NO. 63205

CB CHRISTOPHER B. BURKE ENGINEERING LTD.
9575 West Higgins Road, Suite 600
Rosemont, Illinois 60018 (847) 823-0500

STATE OF ILLINOIS
DEPARTMENT OF TRANSPORTATION
DIVISION OF HIGHWAYS

APPROVED May 25 2009
[Signature]
VILLAGE MANAGER
VILLAGE OF ELMWOOD PARK

PASSED MAY 29 2009
[Signature]
DISTRICT 1 ENGINEER OF LOCAL ROADS AND STREETS

RELEASING FOR
BID BASED ON
LIMITED REVIEW MAY 29 2009
[Signature]
DEPUTY DIRECTOR OF HIGHWAYS
REGION ONE ENGINEER

ORION C. GALEY
062-060829
LICENSED PROFESSIONAL ENGINEER OF ILLINOIS

[Signature] 5-25-2009
ENGINEER DATE

ORION C. GALEY
ILLINOIS REGISTRATION No. 062-060829
EXPIRATION DATE: 11/30/2009

FIELD ENGINEER: MARTIN SOLOMON 847-705-4407

N:\ELMWOODPARK\090186\Civil\CVR_090186.SHT

F.A.U. RTE.	SECTION	COUNTY	TOTAL SHEETS	SHEET NO.
13B2	09-00110-00-RS	COOK	6	2
STA.		TO STA.		
FED. ROAD DIST. NO.		ILLINOIS	FED. AID PROJECT	

GENERAL NOTES

UTILITIES

THE CONTRACTOR SHALL BE RESPONSIBLE FOR CONTACTING THE OWNERS OF ALL EXISTING FACILITIES SO THAT THE UTILITIES AND THEIR APPURTENANCES MAY BE LOCATED AND ADJUSTED OR MOVED, IF NECESSARY, PRIOR TO THE START OF CONSTRUCTION OPERATIONS. THE CONTRACTOR SHALL COOPERATE WITH ALL UTILITY OWNERS AS PROVIDED FOR IN THE STANDARD SPECIFICATIONS.

THE LOCATIONS OF EXISTING DRAINAGE STRUCTURES, STORM AND SANITARY SEWERS, WATER SERVICE LINES AND OTHER UTILITY LINES ARE APPROXIMATE, AND THE VILLAGE DOES NOT GUARANTEE THEIR ACCURACY. THEIR EXACT HORIZONTAL AND VERTICAL LOCATIONS ARE TO BE DETERMINED IN THE FIELD BY THE CONTRACTOR AT HIS OWN EXPENSE.

THE CONTRACTOR SHALL BE RESPONSIBLE FOR THE PROTECTION OF ALL UNDERGROUND OR SURFACE UTILITIES EVEN THOUGH THEY MAY NOT BE SHOWN ON THE PLANS. ANY UTILITY THAT IS DAMAGED DURING CONSTRUCTION SHALL BE REPAIRED OR REPLACED TO THE SATISFACTION OF THE ENGINEER OR THE VILLAGE. THIS WORK SHALL BE AT THE CONTRACTOR'S EXPENSE.

BEFORE STARTING ANY EXCAVATION, THE CONTRACTOR SHALL CALL "JULIE" AT 800-892-0123 FOR FIELD LOCATIONS OF BURIED ELECTRIC, TELEPHONE, GAS AND CABLE TELEVISION FACILITIES. (48 HOURS NOTIFICATION IS REQUIRED.)

STAKING

THE CONTRACTOR SHALL PROTECT AND CAREFULLY PRESERVE ALL SECTION OR SUBSECTION MONUMENTS OR PROPERTY OR REFERENCE MARKERS UNTIL THE VILLAGE, HIS AGENT OR AN AUTHORIZED SURVEYOR HAS WITNESSED OR OTHERWISE REFERENCED THEIR LOCATIONS.

WATER, STORM SEWER AND SANITARY SEWER

WHENEVER DURING CONSTRUCTION OPERATIONS ANY LOOSE MATERIAL IS DEPOSITED IN THE FLOW LINE OF DRAINAGE STRUCTURES SUCH THAT THE NATURAL FLOW OF WATER IS OBSTRUCTED, IT SHALL BE REMOVED AT THE CLOSE OF EACH WORKING DAY. AT THE CONCLUSION OF CONSTRUCTION OPERATIONS, ALL UTILITY STRUCTURES SHALL BE FREE FROM DIRT AND DEBRIS. THE WORK SPECIFIED ABOVE WILL NOT BE PAID FOR SEPARATELY BUT SHALL BE INCIDENTAL TO THE CONTRACT.

ANY EXISTING OR PROPOSED STORM SEWER DAMAGED BY THE CONTRACTOR DURING CONSTRUCTION SHALL BE REPLACED BY THE CONTRACTOR AND INCIDENTAL TO THE CONTRACT.

THE CONTRACTOR SHALL NOT OPEN OR SHUT ANY WATER VALVES OR FIRE HYDRANTS WITHOUT PRIOR AUTHORIZATION FROM THE VILLAGE WATER DEPARTMENT. UNAUTHORIZED USE SHALL SUBJECT THE OFFENDER TO ARREST AND PROSECUTION.

MISCELLANEOUS

ACCESS: THE CONTRACTOR SHALL PROVIDE ACCESS TO ABUTTING PROPERTY AT ALL TIMES DURING THE CONSTRUCTION OF THIS PROJECT, EXCEPT FOR PERIODS OF SHORT DURATION.

DIMENSIONS: IT SHALL BE THE CONTRACTOR'S RESPONSIBILITY TO VERIFY ALL DIMENSIONS AND CONDITIONS EXISTING IN THE FIELD PRIOR TO ORDERING MATERIALS AND BEGINNING CONSTRUCTION.

ALL SAWCUTTING SHALL BE INCLUDED TO REMOVAL ITEMS AND SHALL BE PERFORMED PRIOR TO BEGINNING REMOVAL. ANY ITEMS OF WORK REMOVED PRIOR TO SAWCUTTING WILL NOT BE MEASURED FOR PAYMENT.

AND CLASS D PATCHES WILL BE DETERMINED BY THE ENGINEER IN THE FIELD AND WILL NOT EXCEED THE PLANNED QUANTITY.

THE THICKNESSES OF ASPHALT MIXTURES SHOWN IN THE PLANS ARE NOMINAL. DEVIATIONS MAY OCCUR DUE TO IRREGULARITIES IN THE SURFACES OR BASIS ON WHICH THEY ARE TO BE PLACED. PLAN THICKNESSES SHOULD BE CONSIDERED THE MINIMUM THICKNESS PERMITTED.

DETECTABLE WARNINGS FOR THE HANDICAPPED SHALL BE INSTALLED AT ALL INTERSECTING STREETS, DRIVEWAYS, AND ALLEYS AS DIRECTED BY THE ENGINEER (SEE IDOT STD. 424001-05 INCLUDED IN THE SPECIFICATIONS).

PAVEMENT GRADES: THE ELEVATIONS INDICATED ON THE PLANS ARE FINISHED GRADES OF PROPOSED PAVEMENT OR SURFACE COURSE, UNLESS OTHERWISE INDICATED.

RELOCATING EXISTING SIGNS: EXISTING SIGNS WHICH ARE IN CONFLICT WITH PROPOSED IMPROVEMENTS SHALL BE REMOVED AND REINSTALLED UPON COMPLETION OF CONFLICTING IMPROVEMENTS IN ACCORDANCE WITH THE ILLINOIS DEPARTMENT OF TRANSPORTATION "MANUAL OF UNIFORM TRAFFIC CONTROL DEVICES" AND THE "STANDARD SPECIFICATIONS FOR ROAD AND BRIDGE CONSTRUCTION". STOP SIGNS, SPEED LIMIT SIGNS, AND STREET NAME SIGNS SHALL BE UP AND VISIBLE AT ALL TIMES. THIS WORK SHALL BE INCLUDED TO THE PAY ITEM TRAFFIC CONTROL AND PROTECTION.

MAILBOXES WHICH ARE IN CONFLICT WITH PROPOSED IMPROVEMENTS SHALL BE REMOVED, TEMPORARILY RELOCATED, AND REPLACED UPON COMPLETION OF THE PROPOSED IMPROVEMENTS AS DIRECTED BY THE ENGINEER. THIS WORK SHALL BE CONSIDERED INCLUDED TO THE PAY ITEM TRAFFIC CONTROL AND PROTECTION.

PROPOSED CONCRETE CURB AND GUTTER SHALL BE TRANSITIONED TO EXISTING CURB AND GUTTER OVER A LENGTH OF 5 FEET. THIS WORK SHALL BE PAID FOR AT THE CONTRACT UNIT PRICE PER FOOT FOR COMBINATION CONCRETE CURB AND GUTTER REMOVAL AND REPLACEMENT.

ALL CURB AND GUTTER REMOVAL AND REPLACEMENT ON FULLERTON AVENUE MUST BE SLIP FORMED.

ALL UNDERGROUND, DRIVEWAY, CONCRETE, AND SOD WORK IS TO BE COMPLETED BEFORE THE SURFACE COURSE CAN BE INSTALLED.

HIGHWAY STANDARDS

000001-05	STANDARD SYMBOLS, ABBREVIATIONS, AND PATTERNS
424001-05	CURB RAMPS FOR SIDEWALKS
442201-03	CLASS C AND D PATCHES
606001-04	CONCRETE CURB TYPE B AND COMBINATION CONCRETE CURB AND GUTTER
701501-05	URBAN LANE CLOSURE, 2L, 2W UNDIVIDED
701701-06	URBAN LANE CLOSURE, MULTILANE INTERSECTION
701801-04	LANE CLOSURE MULTILANE 1W OR 2W CROSSWALK OR SIDEWALK CLOSURE
701901-01	TRAFFIC CONTROL DEVICES
780001-02	TYPICAL PAVEMENT MARKINGS

SUMMARY OF QUANTITIES

ITEM #	DESCRIPTION	UNIT	QUANTITY
21101615	TOPSOIL FURNISH AND PLACE, 4"	SQ YD	200.0
25200110	SODDING, SALT TOLERANT	SQ YD	200.0
25200200	SUPPLEMENTAL WATERING	UNIT	10.0
28000510	INLET FILTERS	EACH	20.0
40600100	BITUMINOUS MATERIALS (PRIME COAT)	GAL	1300.0
40600982	HOT-MX ASPHALT SURFACE REMOVAL - BUTT JOINT	SQ YD	51.0
40603335	HOT-MX ASPHALT SURFACE COURSE, MIX'D, 1.5" @	TON	1090
42400200	PCC SIDEWALK, 6"	SQ FT	5500.0
42400800	DETECTABLE WARNINGS	SQ FT	450.0
44000157	HOT-MX ASPHALT SURF REMOVAL, 2"	SQ YD	13000.0
44000600	SIDEWALK REMOVAL	SQ FT	5500.0
44001700	COMBINATION CONCRETE CURB & GUTTER REMOVAL AND REPLACEMENT	FOOT	300.0
44201717	CLASS D PATCHES, TYPE II, 6"	SQ YD	50.0
44201721	CLASS D PATCHES, TYPE III, 6"	SQ YD	150.0
44201723	CLASS D PATCHES, TYPE IV, 6"	SQ YD	215.0
60200105	CATCH BASIN, TYPE A, 4' DIAMETER, TYPE 1 FRAME, OPEN LID	EACH	2
67100100	MOBILIZATION	L SUM	1.0
70102620	TRAFFIC CONTROL AND PROTECTION, STANDARD 701501	L SUM	1.0
70102635	TRAFFIC CONTROL AND PROTECTION, STANDARD 701701	L SUM	1.0
70102640	TRAFFIC CONTROL AND PROTECTION, STANDARD 701801	L SUM	1.0
* 78000200	THERMOPLASTIC PAVEMENT MARKING - LINE 4"	FOOT	4800.0
* 78000400	THERMOPLASTIC PAVEMENT MARKING - LINE 6"	FOOT	1300.0
* 78000650	THERMOPLASTIC PAVEMENT MARKING - LINE 24"	FOOT	425.0
X4067107	POLYMERIZED LEVELING BINDER (MACHINE METHOD), IL4.75, N50	TON	545.0
Z0018100	DRAINAGE STRUCTURE ADJUSTMENT(SPECIAL)	EACH	10.0
Z0018200	DRAINAGE STRUCTURE RECONSTRUCTION(SPECIAL)	EACH	2.0
Z0018700	DRAINAGE STRUCTURE TO BE REMOVED	EACH	3.0
	* SPECIALTY ITEM		

PLOT DATE = 5/27/2009
 PLOT TIME = 11:25:00
 PLOT SCALE = 20'
 USER NAME = MCDLDES

REVISIONS	
NAME	DATE

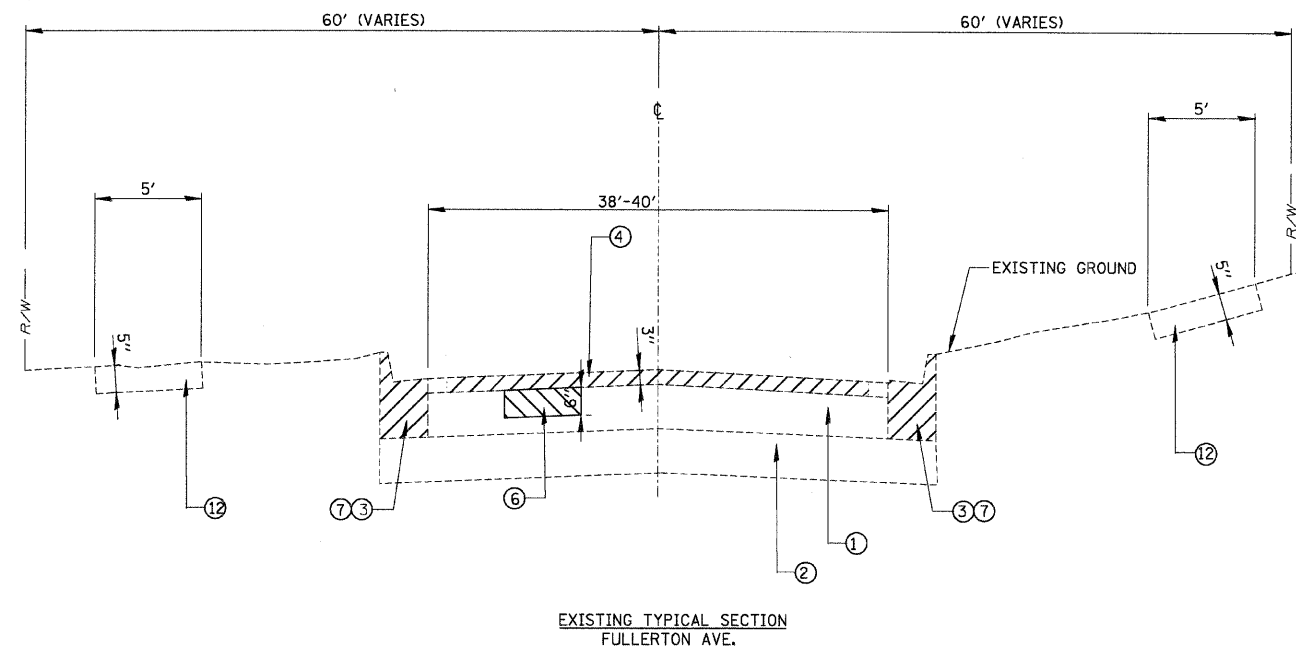
ILLINOIS DEPARTMENT OF TRANSPORTATION

**FULLERTON AVENUE
GENERAL NOTES, IDOT STANDARDS
AND SUMMARY OF QUANTITIES**

SCALE: 20'
DATE 5/27/2009

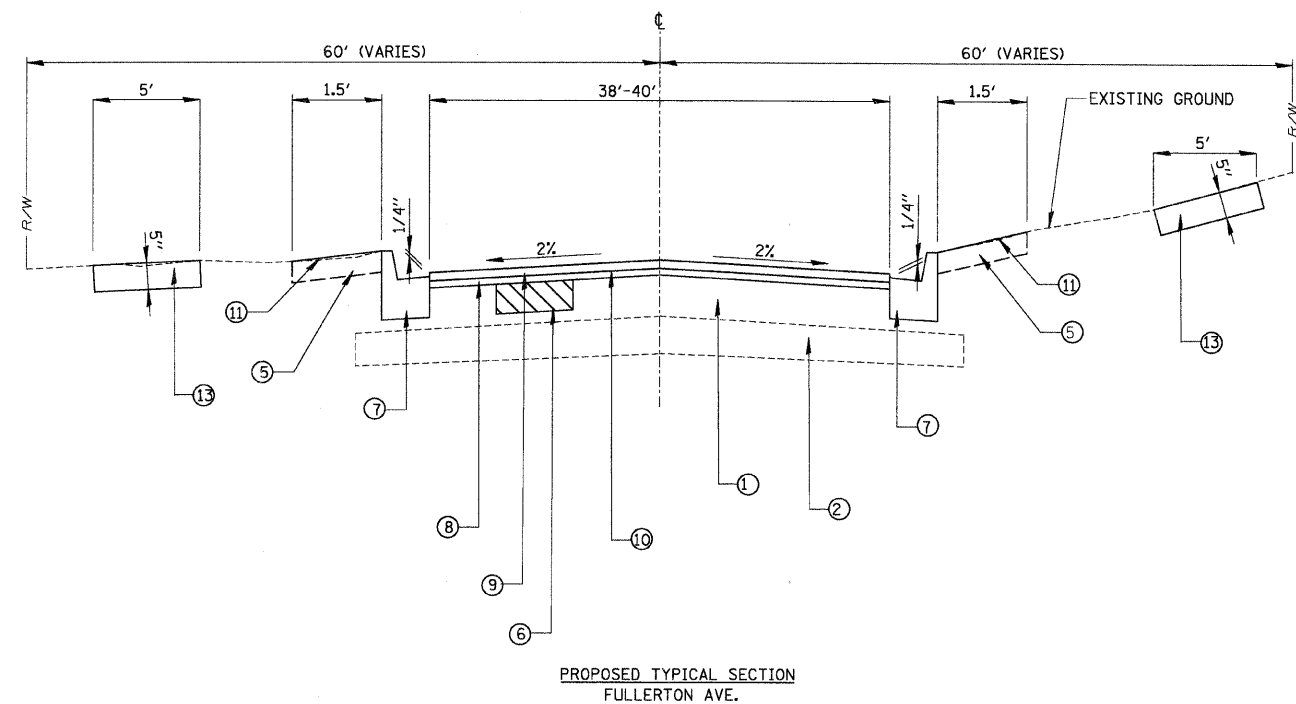
DRAWN BY ELA
CHECKED BY OCG

F.A.U. RTE.	SECTION	COUNTY	TOTAL SHEETS	SHEET NO.
1382	09-00110-00-RS	COOK	6	3
STA.		TO STA.		
FED. ROAD DIST. NO.		ILLINOIS FED. AID PROJECT		



LEGEND

- ① EXISTING ASPHALT PAVEMENT, (TBD)
- ② EXISTING AGGREGATE BASE (TBD)
- ③ EXISTING CURB AND GUTTER
- ④ PROPOSED HOT-MIX ASPHALT SURFACE REMOVAL, 2"
- ⑤ PROPOSED TOPSOIL FURNISH AND PLACE, 4"
- ⑥ CLASS D PATCHES, 6"
- ⑦ COMBINATION CONCRETE CURB AND GUTTER REMOVAL AND REPLACEMENT (AS DIRECTED BY THE ENGINEER)
- ⑧ PROPOSED POLYMERIZED LEVELING BINDER (MACHINE METHOD), IL-4.75 N50 - 3/4"
- ⑨ PROPOSED HOT-MIX ASPHALT SURFACE COURSE, MIX "D" N50 - 1 1/2"
- ⑩ PROPOSED BITUMINOUS MATERIAL (PRIME COAT)
- ⑪ PROPOSED SODDING, SALT TOLERANT
- ⑫ EXISTING SIDEWALK
- ⑬ PCC SIDEWALK, 5" (AS DIRECTED BY THE ENGINEER)



HOT-MIX ASPHALT REQUIREMENT	AC-TYPE	VOIDS
HOT-MIX ASPHALT SURFACE COURSE, MIX D, N50 IL-9.5MM	PG 64-22	4% @ 50GYR.
POLYMERIZED LEVELING BINDER (MACHINE METHOD), IL-4.75, N50	SBS/SBR PG 76-28/22	4% @ 50GYR.
CLASS D PATCHES, 6" (BINDER-IL-19MM)	PG 64-22/*	4% @ 70GYR.

NOTE:

- 1. THE UNIT WEIGHT USED TO CALCULATE ALL HOT-MIX ASPHALT SURFACE MIXTURE QUANTITIES IS 112 LBS/SY/IN.
- * 2. WHEN RAP EXCEEDS 20%, THE NEW ASPHALT BINDER IN THE MIX SHALL BE PG 58-22.
- 3. ALL WORK INCLUDING SOD MUST BE COMPLETED AND APPROVED BY ENGINEER PRIOR TO FINAL SURFACE LIFT OF ASPHALT.
- 4. CONTRACTOR SHALL MILL BEFORE PATCHING.

REVISIONS	
NAME	DATE

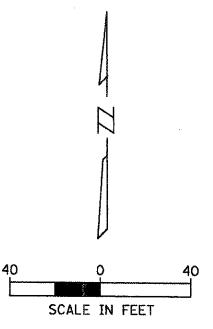
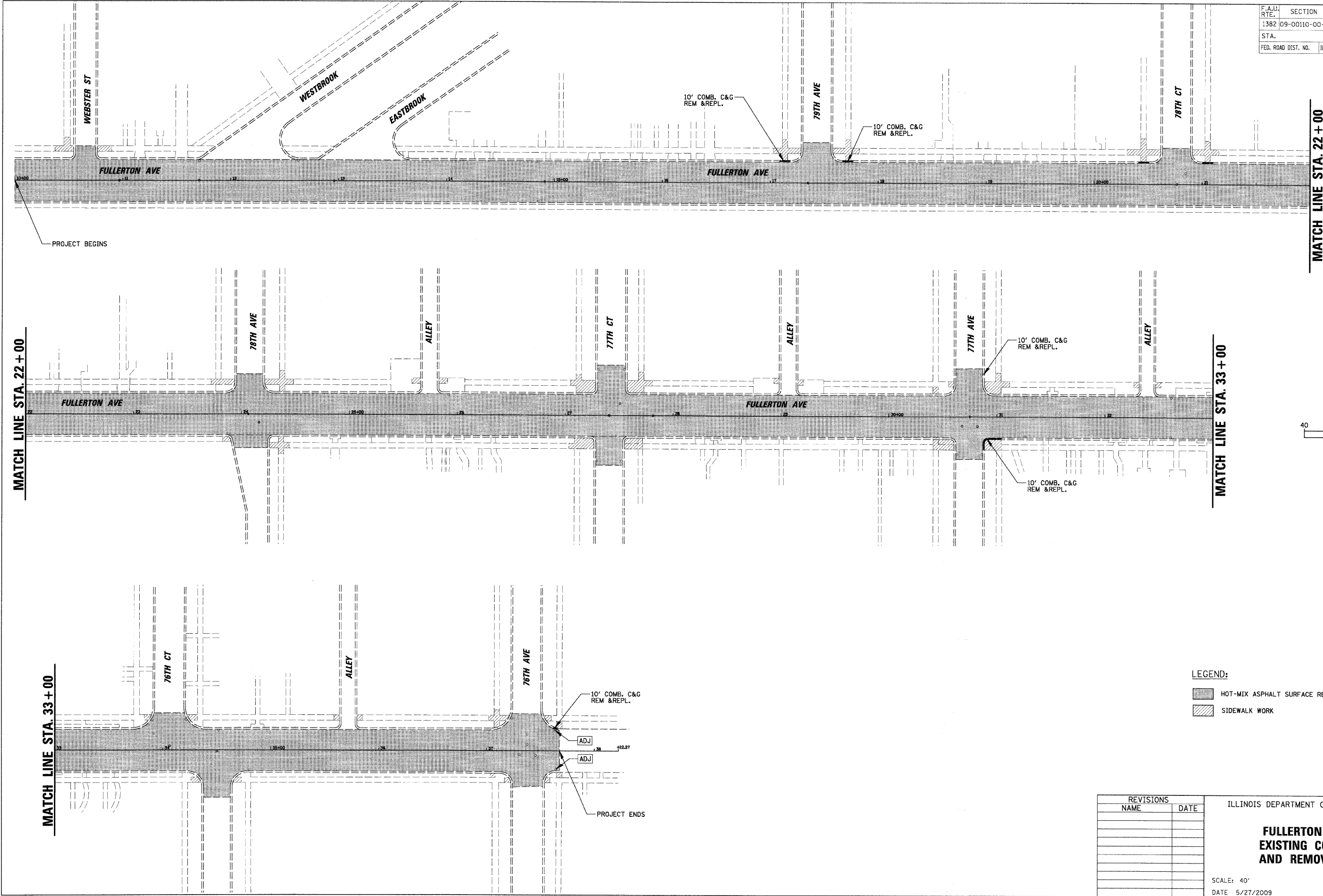
ILLINOIS DEPARTMENT OF TRANSPORTATION

**FULLERTON AVENUE
TYPICAL SECTIONS**

SCALE: 20'
DATE 5/27/2009

DRAWN BY ELA
CHECKED BY OCC

F.A.U. RTE.	SECTION	COUNTY	TOTAL SHEETS	SHEET NO.
1382	09-00110-00-RS	COOK	6	4
STA.		TO STA.		
FED. ROAD DIST. NO.		ILLINOIS FED. AID PROJECT		



LEGEND:

	HOT-MIX ASPHALT SURFACE REMOVAL, 2"
	SIDEWALK WORK

REVISIONS	
NAME	DATE

ILLINOIS DEPARTMENT OF TRANSPORTATION

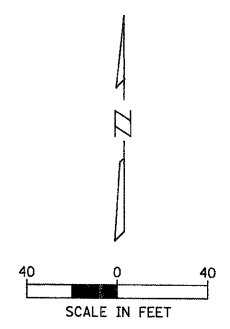
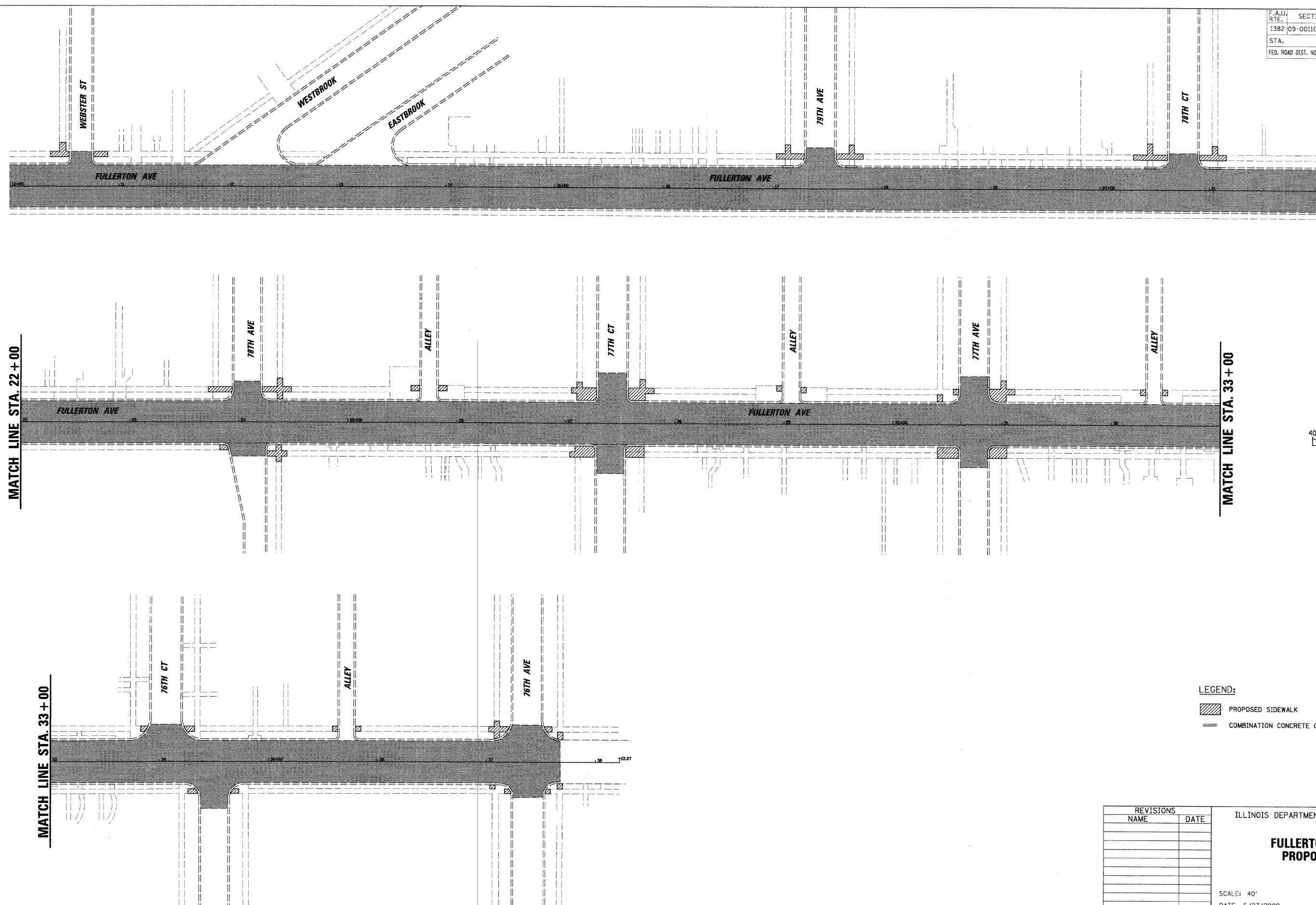
**FULLERTON AVENUE
EXISTING CONDITIONS
AND REMOVAL PLAN**

SCALE: 40'
DATE 5/27/2009

DRAWN BY ELA
CHECKED BY OCG

PLOT DATE = 5/27/2009
 PLOT NAME = C:\WORK\PROJECTS\63205\1382\138209\13820904.RVT
 PLOT SCALE = 40'
 USER NAME = MCD.DENB

F.A.U. RTE.	SECTION	COUNTY	TOTAL SHEETS	SHEET NO.
1382	09-00110-00-RS	COOK	6	5
STA.	TO STA.			
FED. ROAD DIST. NO.	ILLINOIS	FED. AID PROJECT		



LEGEND:
 PROPOSED SIDEWALK
 COMBINATION CONCRETE CURB AND GUTTER

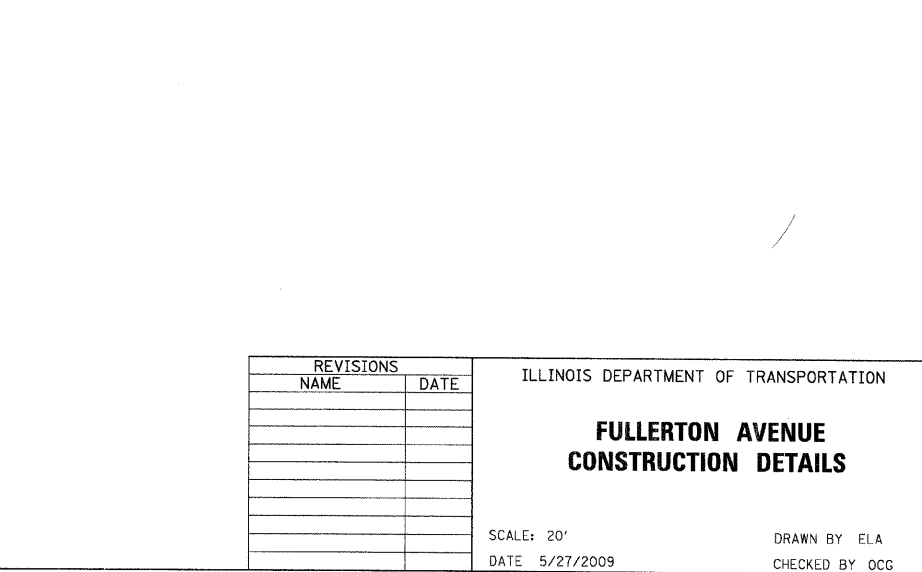
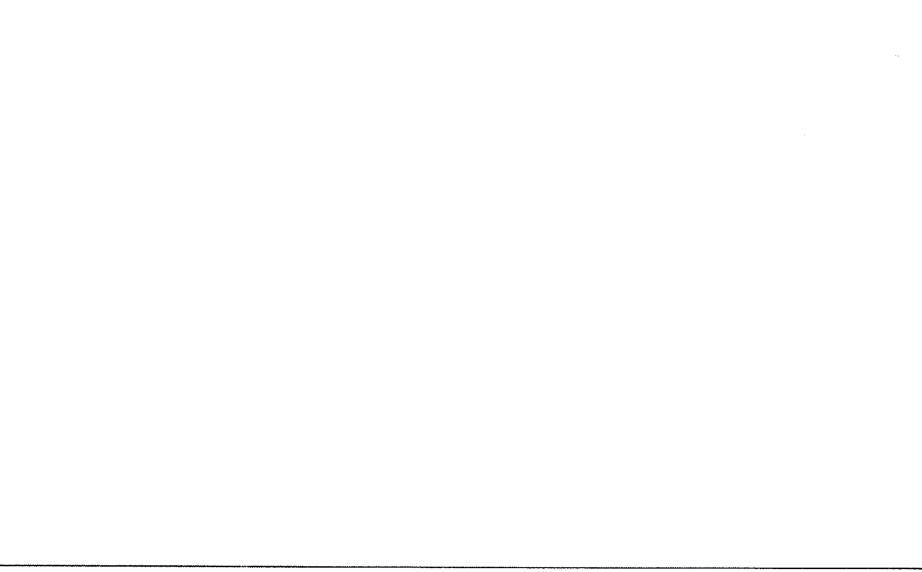
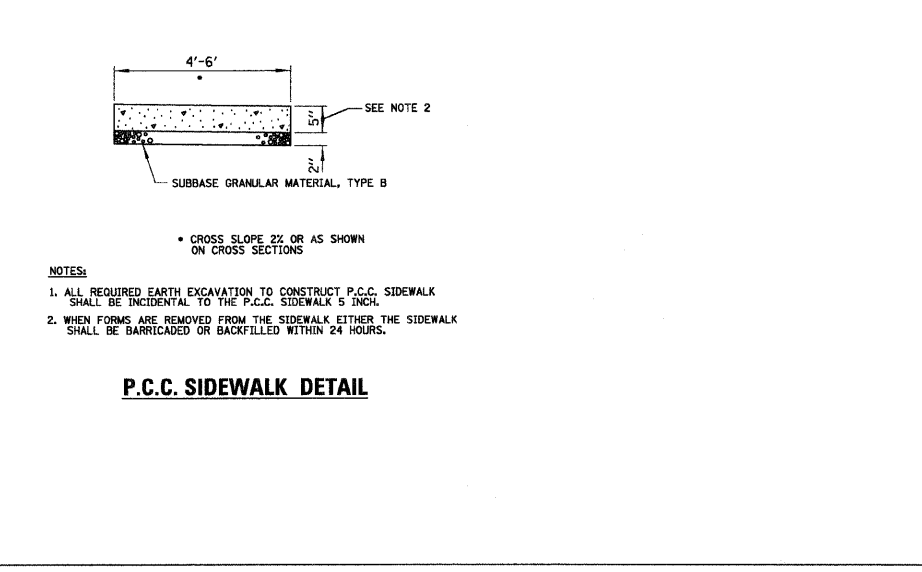
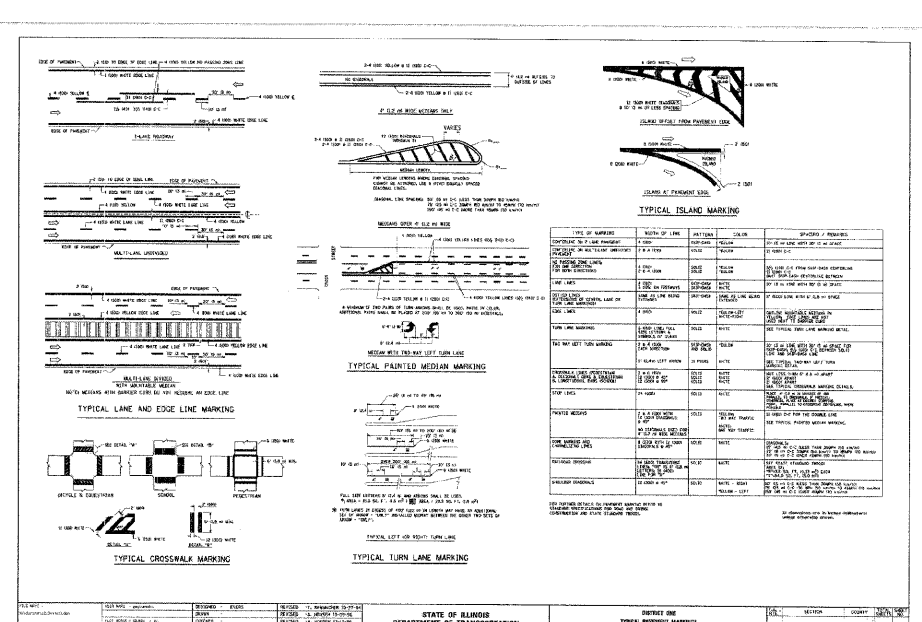
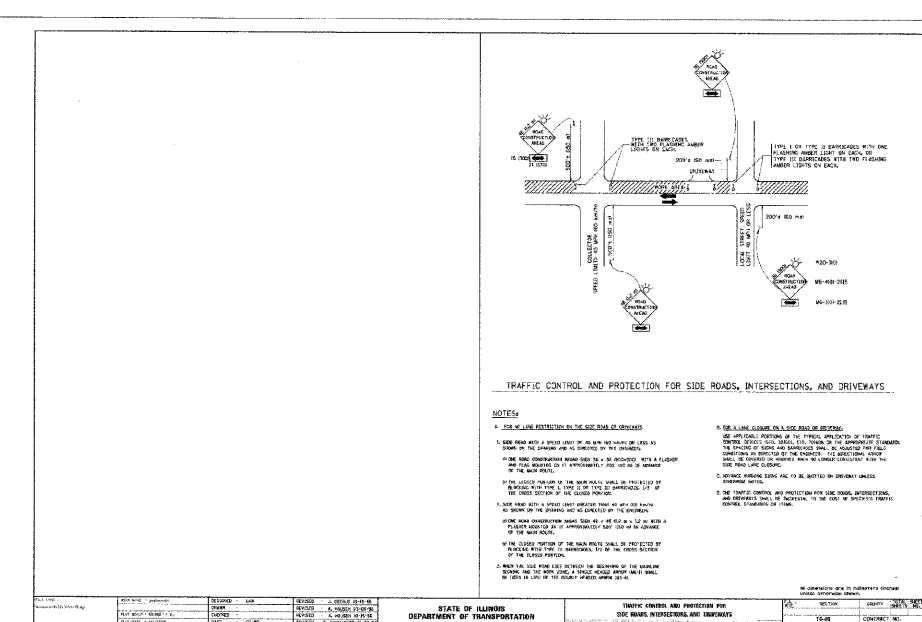
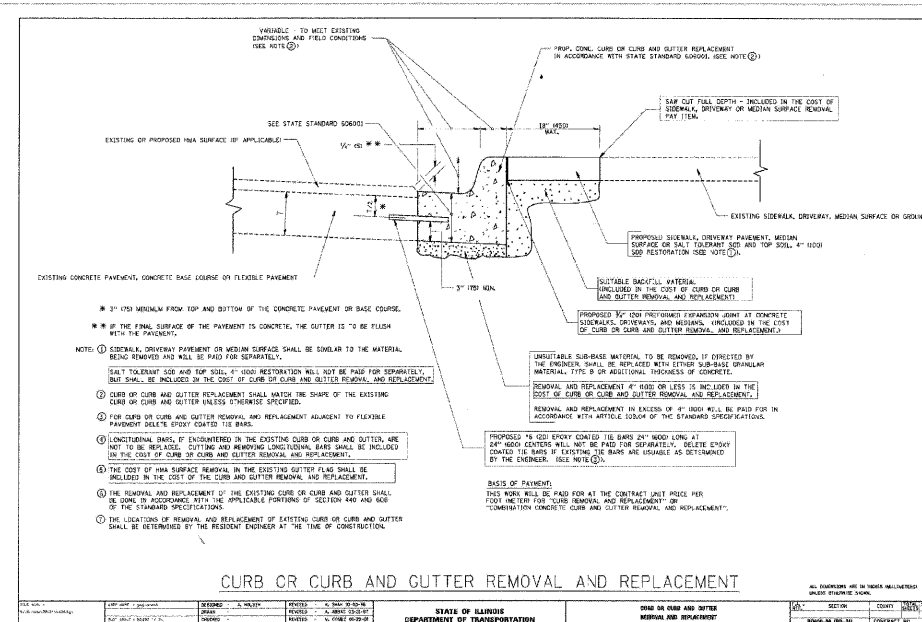
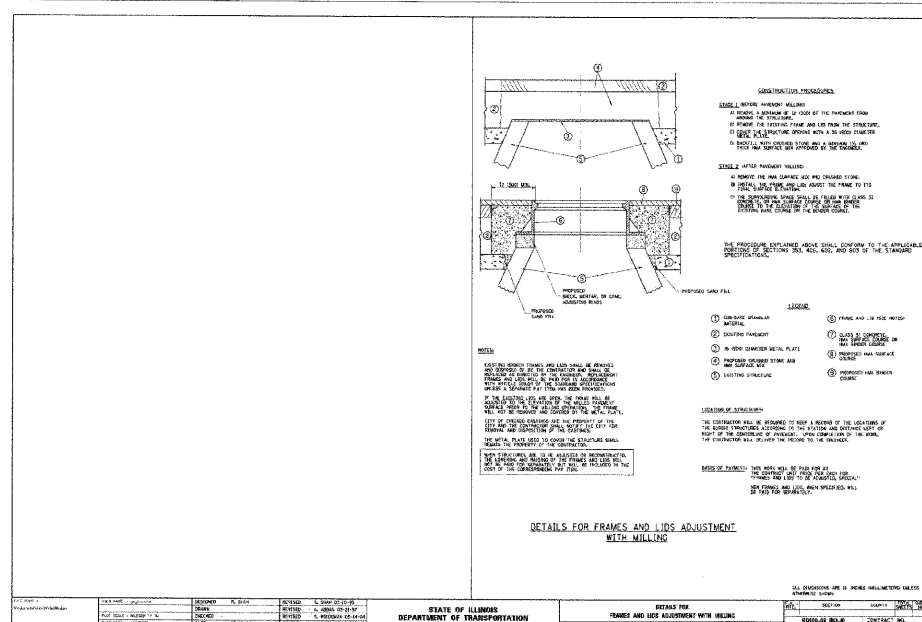
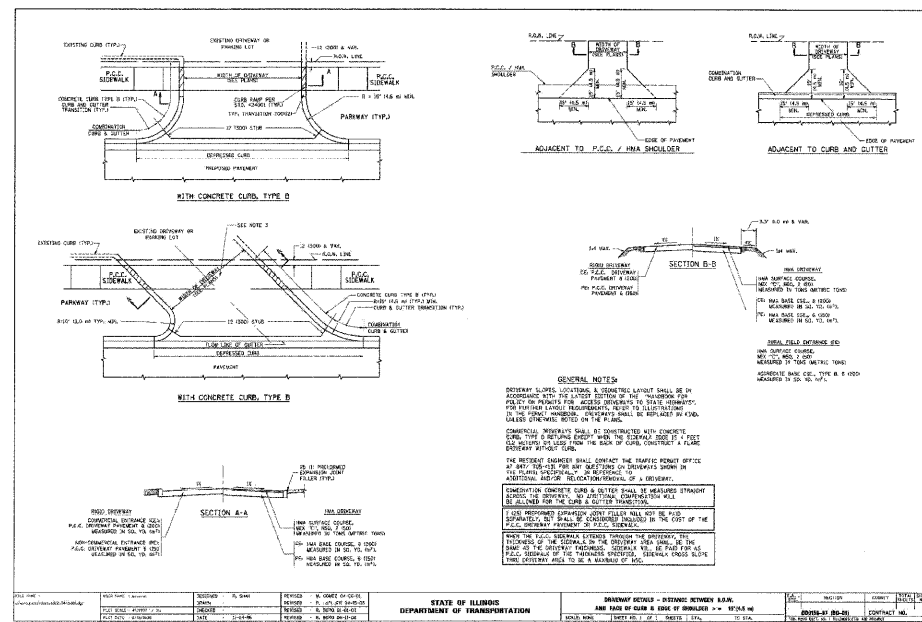
REVISIONS	
NAME	DATE

ILLINOIS DEPARTMENT OF TRANSPORTATION
**FULLERTON AVENUE
 PROPOSED PLAN**

SCALE: 40'
 DATE 5/27/2009
 DRAWN BY ELA
 CHECKED BY OCG

PLT DATE = 5/27/2009
 PLOT SCALE = 40'
 USER NAME = MGDLEB

F.A.U. RTE.	SECTION	COUNTY	TOTAL SHEETS	SHEET NO.
1382	09-00110-00-RS	COOK	6	6
STA.		TO STA.		
FED. ROAD DIST. NO.	ILLINOIS	FED. AID PROJECT		



DATE: 5/27/2009
 SCALE: 2" = 1'-0"
 USER: MSOLDS

ILLINOIS DEPARTMENT OF TRANSPORTATION

FULLERTON AVENUE CONSTRUCTION DETAILS

SCALE: 20'

DATE: 5/27/2009

DRAWN BY: ELA

CHECKED BY: OCC