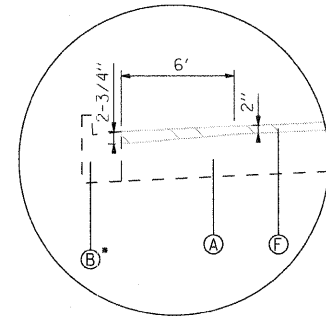
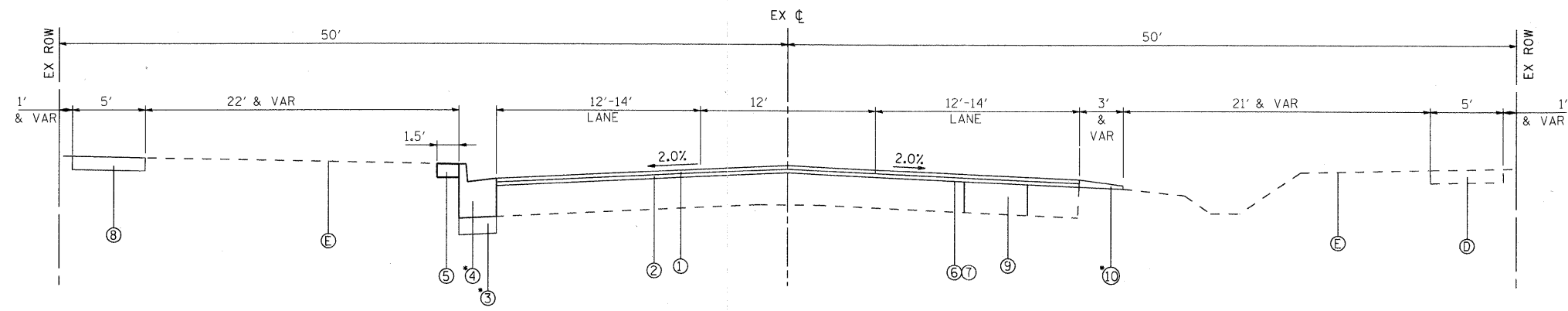


**EXISTING TYPICAL SECTION  
IRVING PARK ROAD (IL ROUTE 19)**  
STA. 32+76 TO STA. 68+80



**DETAIL "A"**

\* COMBINATION CONCRETE CURB & GUTTER LOCATIONS VARY. SEE ROADWAY PLANS FOR ADDITIONAL INFORMATION. FINISHED ROADWAY SURFACE SHALL BE 1/4" ABOVE GUTTER FLAG AT THE EDGE OF PAVEMENT.



**PROPOSED TYPICAL SECTION  
IRVING PARK ROAD (IL ROUTE 19)**  
STA. 32+76 TO STA. 68+80

**EXISTING LEGEND**

- (A) HOT-MIX ASPHALT PAVEMENT, DEPTH VARIES
- (B) COMBINATION CONCRETE CURB & GUTTER, TYPE VARIES
- (C) AGGREGATE SHOULDER, 6"
- (D) PORTLAND CEMENT CONCRETE SIDEWALK, 5"
- (E) EXISTING GROUND
- (F) HOT-MIX ASPHALT SURFACE REMOVAL, 2" REMOVAL SHALL BE INCREASED TO 2-3/4" AT LOCATIONS OF COMBINATION CONCRETE CURB & GUTTER. ADDITIONAL THICKNESS OF SURFACE REMOVAL IS INCLUDED IN THE COST OF HOT-MIX ASPHALT SURFACE REMOVAL, 2". SEE DETAIL "A".

**PROPOSED LEGEND**

- (1) HOT-MIX ASPHALT SURFACE COURSE, MIX "D", N70, 2"
- (2) LEVELING BINDER (MACHINE METHOD), N70, 1" (MIN.)
- (3) AGGREGATE BASE COURSE, TYPE B CA-7, 6" (INCLUDED IN THE COST OF CURB & GUTTER)
- (4) COMBINATION CONCRETE CURB AND GUTTER REMOVAL AND REPLACEMENT (AS DIRECTED BY THE RESIDENT ENGINEER)
- (5) SODDING, SALT TOLERANT & TOPSOIL 4" (TO BE INCLUDED IN THE COST OF CURB & GUTTER REMOVAL & REPLACEMENT)
- (6) BITUMINOUS MATERIALS (PRIME COAT)
- (7) AGGREGATE (PRIME COAT)
- (8) SIDEWALK REMOVAL AND REPLACEMENT, SPECIAL (AS DIRECTED BY THE RESIDENT ENGINEER)
- (9) CLASS D PATCHES, 8-INCH (AS DIRECTED BY THE RESIDENT ENGINEER)
- (10) AGGREGATE SHOULDERS, TYPE B, TAPER 3" TO 1" THICKNESS

**HOT-MIX ASPHALT MIXTURE REQUIREMENTS**

NOTE: CONTRACTOR SHALL MILL BEFORE PATCHING.

MIXTURE TYPE	AC TYPE	VOIDS
<b>RESURFACING</b>		
HOT-MIX ASPHALT SURFACE COURSE, MIX "D", N70 (IL 9.5mm)	PG 64-22	4% @ 70 GYR
LEVELING BINDER (MACHINE METHOD), N70 (IL 9.5mm)	PG 64-22•	4% @ 70 GYR
<b>PATCHING</b>		
CLASS D PATCHES (HMA BINDER IL-19mm), 8-INCH	PG 64-22•	4% @ 70 GYR
<b>DRIVEWAYS</b>		
HOT-MIX ASPHALT SURFACE COURSE, MIX "D", N70 (IL 9.5mm)	PG 64-22	4% @ 70 GYR

THE UNIT WEIGHT USED TO CALCULATE ALL HOT-MIX ASPHALT SURFACE MIXTURES IS 112 LBS/SQ YD/IN  
•WHEN RAP EXCEEDS 20% THE NEW ASPHALT BINDER IN THE MIX SHALL BE PG 58-22

COMPANY NAME: Smith & Mulvaney  
 CONTACT: VILLAGE OF STREAMWOOD  
 CLIENT: 5/26/2009 10:58:05 AM  
 DATE PLOTTED: 09/01/09 typ-01.dgn  
 FILE NAME: pdf.dwg  
 PLOT DRIVER: standard-trans.tbl  
 PEN TABLE:



USER NAME = charke	DESIGNED - C. HARTKE	REVISED -
	DRAWN - J. ATTANASEO	REVISED -
PLOT SCALE =	CHECKED - T. HAMILTON	REVISED -
PLOT DATE = 5/26/2009	DATE - 5/22/09	REVISED -

**VILLAGE OF STREAMWOOD**

**EXISTING AND PROPOSED TYPICAL SECTIONS**

SCALE: ILLINOIS ROUTE 19 OF SHEETS STA. TO STA.

F.A.U. RTE.	SECTION	COUNTY	TOTAL SHEETS	SHEET NO.
1321	09-00053-00-RS	COOK	13	4
CONTRACT NO. 63213				
FED. ROAD DIST. NO. ILLINOIS FED. AID PROJECT ARA-9003(304)				