

STATE OF ILLINOIS
DEPARTMENT OF TRANSPORTATION

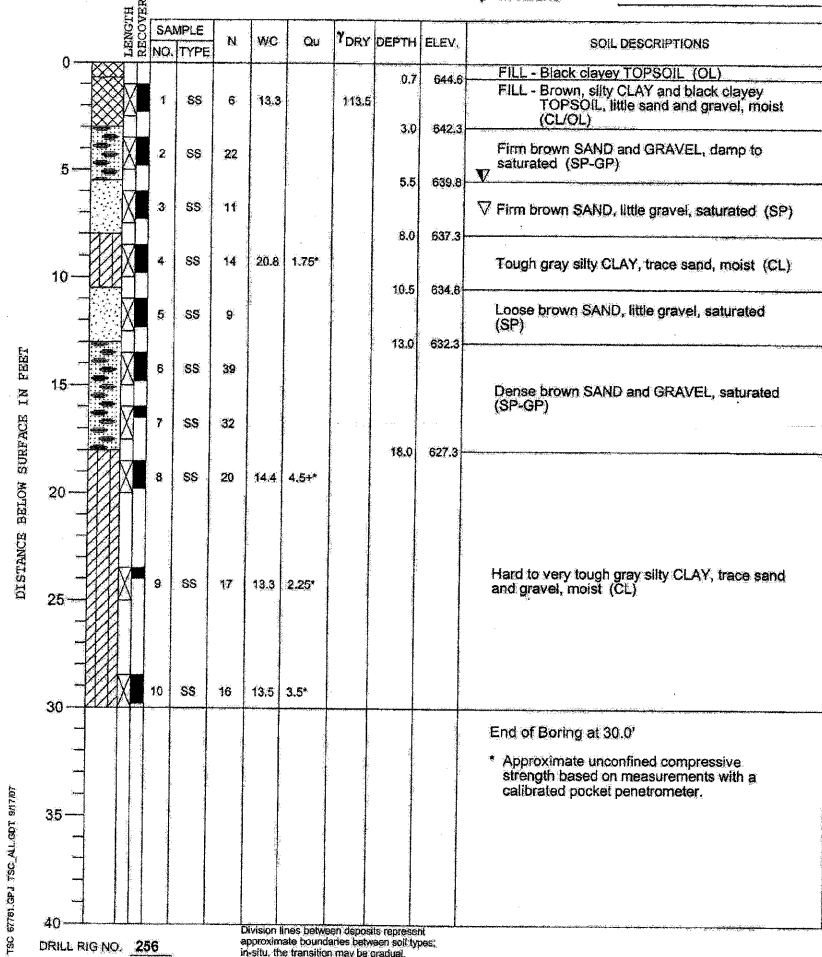
PROJECT Hawthorne School Pedestrian Bridge, Wheeling, Illinois

CLIENT Strand Associates, Inc., Joliet, Illinois



BORING 1 DATE STARTED 9-11-07 DATE COMPLETED 9-11-07 JOB L-67,781

ELEVATIONS WATER LEVEL OBSERVATIONS
GROUND SURFACE 645.3 WHILE DRILLING 5.5'
END OF BORING 615.3 AT END OF BORING 7.0'
24 HOURS



DRILL RIG NO. 256

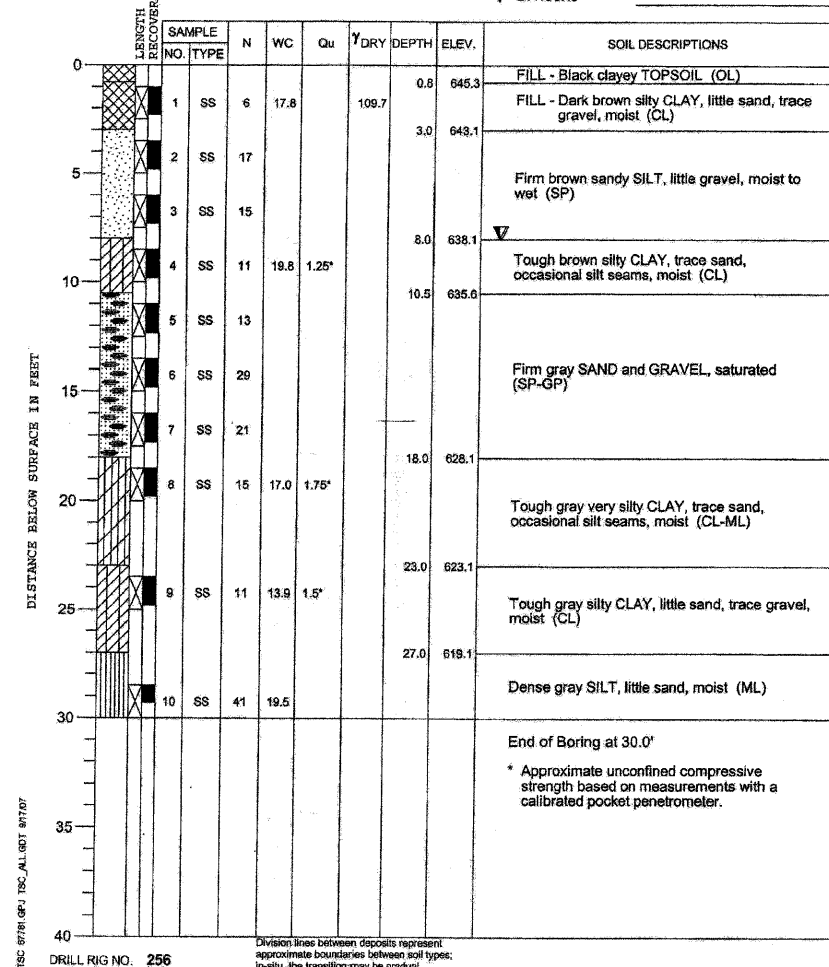
PROJECT Hawthorne School Pedestrian Bridge, Wheeling, Illinois

CLIENT Strand Associates, Inc., Joliet, Illinois



BORING 2 DATE STARTED 9-11-07 DATE COMPLETED 9-11-07 JOB L-67,781

ELEVATIONS WATER LEVEL OBSERVATIONS
GROUND SURFACE 646.1 WHILE DRILLING 8.0'
END OF BORING 616.1 AT END OF BORING 8.0'
24 HOURS



DRILL RIG NO. 256

BORING LOG
HAWTHORNE SCHOOL
PEDESTRIAN BRIDGE
STA. 504+77.69
STRAND ASSOCIATES, INC.

DESIGNED **RRD**
CHECKED **JAR**
DRAWN **KAS**
CHECKED **JAR**

SHEET NO. 3	F.A. RTE.	SECTION	COUNTY	TOTAL SHEETS	SHEET NO.
		06-00069-00-BR	COOK	26	18
3 SHEETS	BORING LOG		CONTRACT NO. 63217		
FED. ROAD DIST. NO.		ILLINOIS	FED. AID PROJECT		