

F.A.P. RTE.	SECTION	COUNTY	TOTAL SHEETS	SHEET NO.
17	110T-4	OGLE	40	1
FED. ROAD DIST. NO.		ILLINOIS	CONTRACT NO. 64E32	

**STATE OF ILLINOIS
DEPARTMENT OF TRANSPORTATION
DIVISION OF HIGHWAYS**

**PROPOSED
HIGHWAY PLANS**

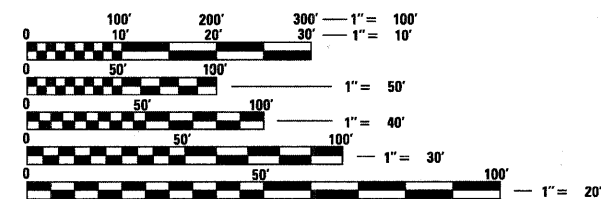
**FAP ROUTE 17 (IL 64)
SECTION 110T-4
PROJECT ACF-0017 (128)
OGLE COUNTY**

INDEX OF SHEETS

- 1 COVER SHEET
- 2 - 3 SUMMARY OF QUANTITIES
- 4 GENERAL NOTES
- 5 - 10 TYPICAL SECTIONS
- 11 - 13 SCHEDULE OF QUANTITIES
- 14 EARTHWORK SCHEDULE
- 15 - 18 HORIZONTAL AND VERTICAL CONTROL
- 19 - 21 PLAN AND PROFILE SHEETS
- 22 - 23 R.O.W., EROSION CONTROL, AND SEEDING DETAILS
- 24 SOIL BORING LOGS
- 25 DELINEATOR AND POST (DIST STD 37.4)
- 25 TYPICAL BENCHING DETAIL ON EXISTING EMBANKMENT (DIST STD 50.4)
- 25 LETTERING FOR NAME PLATE (DIST STD 89.4)
- 25 TREE REPLACEMENT SCHEDULE (DIST STD 90.4)
- 26 EROSION CONTROL DETAILS FOR SILT FENCE (DIST STD 29.2)
- 26 INFORMATIONAL WARNING SIGN (FOR NARROW TRAVEL LANES) (DIST STD 39.2)
- 27 WITNESS MARKER & PERMANENT SURVEY MARKERS, TYPE II (DIST STD 66.2)
- 28 STORM WATER POLLUTION PREVENTION PLAN EROSION CONTROL PLAN (DIST STD 2.1)
- 29 - 31 TYPICAL PAVEMENT MARKINGS (DIST STD 41.1)
- 32 DETAILS OF PLANTING AND BRACING TREES (DIST 92.1)
- 33 - 40 CROSS SECTIONS

STATE STANDARDS

- 280001-04 TEMPORARY EROSION CONTROL SYSTEMS
- 542301-02 PRECAST REINFORCED CONCRETE FLARED END SECTION
- 635001-01 DELINEATORS
- 666001-01 RIGHT-OF-WAY MARKERS
- 701006-03 OFF-ROAD OPERATIONS, 2L, 2W, 4.5M (15') TO 600 MM (24') FROM PAVEMENT EDGE
- 701201-03 LANE CLOSURE, 2L, 2W, DAY ONLY, FOR SPEEDS ≥ 45 MPH
- 701301-03 LANE CLOSURE, 2L, 2W, SHORT TIME OPERATIONS
- 701311-03 LANE CLOSURE, 2L, 2W, MOVING OPERATIONS - DAY ONLY
- 701901-01 TRAFFIC CONTROL DEVICES
- 720011-01 METAL POSTS FOR SIGNS, MARKERS AND DELINEATORS
- 728001-01 TELESCOPING STEEL SIGN SUPPORT
- 729001-01 APPLICATIONS OF TYPES A AND B METAL POSTS (FOR SIGNS & MARKERS)
- 780001-02 TYPICAL PAVEMENT MARKINGS
- 000001-05 STANDARD SYMBOLS, ABBREVIATIONS AND PATTERNS
- 001006 DECIMAL OF AN INCH AND OF A FOOT

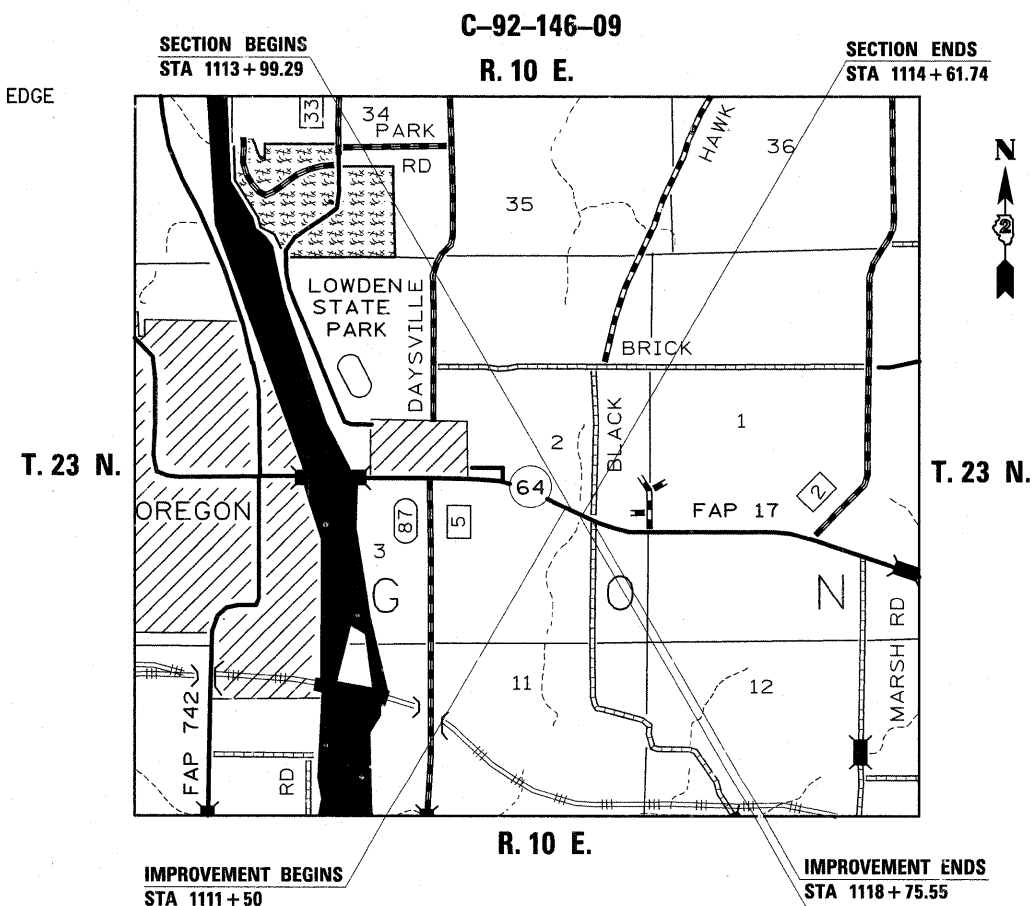


FULL SIZE PLANS HAVE BEEN PREPARED USING STANDARD ENGINEERING SCALES. REDUCED SIZED PLANS WILL NOT CONFORM TO STANDARD SCALES. IN MAKING MEASUREMENTS ON REDUCED PLANS, THE ABOVE SCALES MAY BE USED.

J.U.L.I.E.
JOINT UTILITY LOCATION INFORMATION FOR EXCAVATION
1-800-892-0123
OR 811

OREGON - NASHUA TOWNSHIP : SECTION 2
DESIGN SQUAD ENGINEER : JENNIFER WILLIAMS (815)-284-5950
PROJECT ENGINEER : MASOOD AHMAD
CONTRACT NO. 64E32

OGLE SECTION 110T-4 F.A.P. 17 (IL 64)



REMOVAL AND REPLACEMENT OF EXISTING BOX CULVERT EXISTING S.N. 071-1057 PROPOSED S.N. 071-1229

GROSS SECTION LENGTH = 62.45 FT. = 0.012 MILE
NET SECTION LENGTH = 62.45 FT. = 0.012 MILE

D-92-087-08



LOCATION OF SECTION INDICATED THUS: -

STATE OF ILLINOIS
DEPARTMENT OF TRANSPORTATION
DIVISION OF HIGHWAYS

SUBMITTED 4/24 2009

George F. Ryan
DEPUTY DIRECTOR OF HIGHWAYS, REGION ENGINEER

June 26, 2009
Charles G. Ingersoll
ENGINEER OF DESIGN AND ENVIRONMENT

June 26, 2009
Christine M. Reed
DIRECTOR OF HIGHWAYS, CHIEF ENGINEER

**PRINTED BY THE AUTHORITY
OF THE STATE OF ILLINOIS**

DISTRICT 2, DIXON