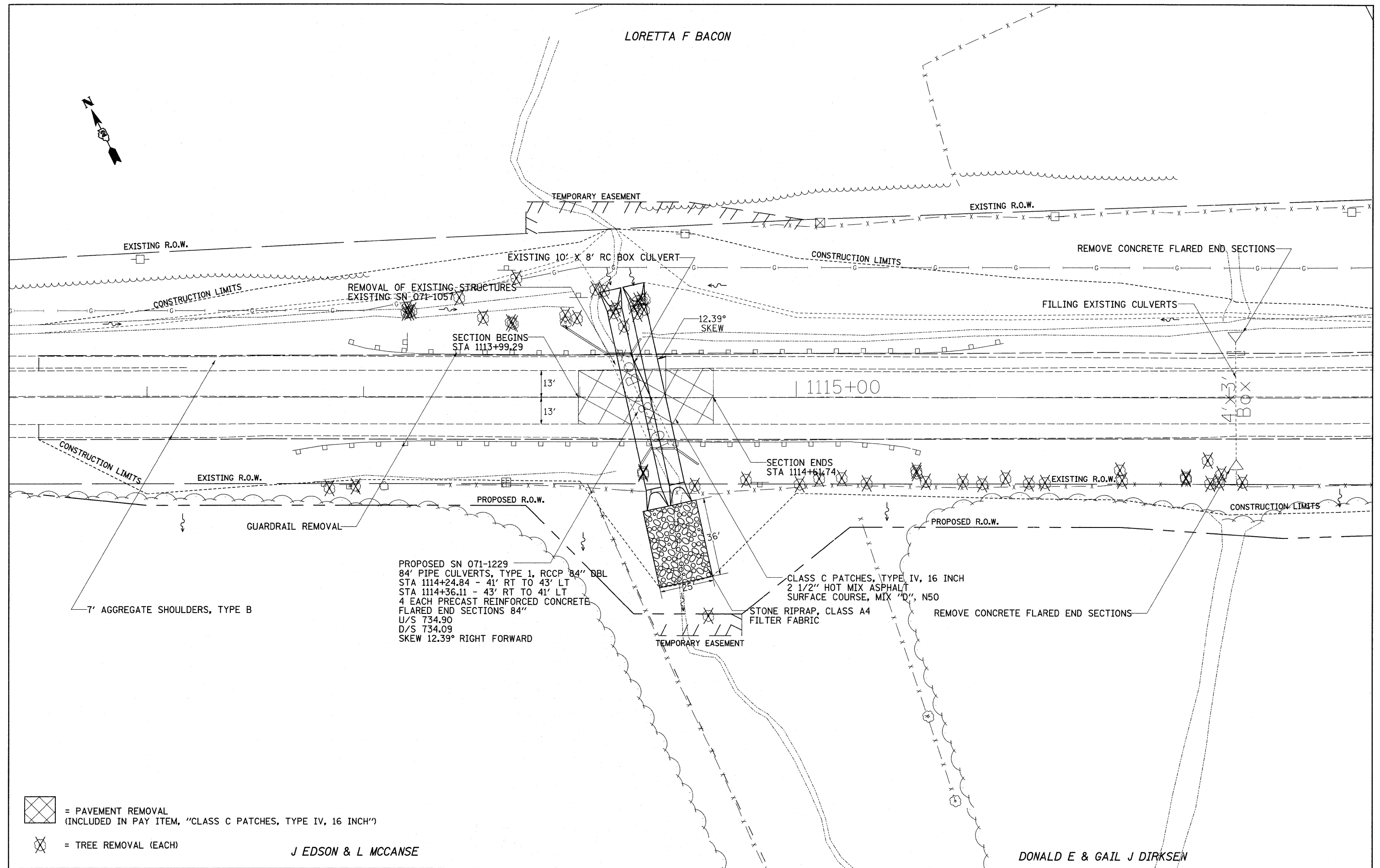


LORETTA F BACON



PROPOSED SN 071-1229  
 84' PIPE CULVERTS, TYPE 1, RCCP 84" DBL  
 STA 1114+24.84 - 41' RT TO 43' LT  
 STA 1114+36.11 - 43' RT TO 41' LT  
 4 EACH PRECAST REINFORCED CONCRETE  
 FLARED END SECTIONS 84"  
 U/S 734.90  
 D/S 734.09  
 SKEW 12.39° RIGHT FORWARD

CLASS C PATCHES, TYPE IV, 16 INCH  
 2 1/2" HOT MIX ASPHALT  
 SURFACE COURSE, MIX "D", N50

STONE RIPRAP, CLASS A4  
 FILTER FABRIC

- = PAVEMENT REMOVAL  
 (INCLUDED IN PAY ITEM, "CLASS C PATCHES, TYPE IV, 16 INCH")
- = TREE REMOVAL (EACH)

J EDSON & L MCCANSE

DONALD E & GAIL J DIRKSEN

FILE NAME =	USER NAME = goff_jl	DESIGNED -	REVISED -	<b>STATE OF ILLINOIS DEPARTMENT OF TRANSPORTATION</b>		<b>IL RTE 64</b>		F.A.P. RTE.	SECTION	COUNTY	TOTAL SHEETS	SHEET NO.
ct:\pwork\PWIDOT\GOFFJL\dms41998\d08748p1r.dgn		DRAWN -	REVISED -					17	110T-4	OGLE	40	21
		CHECKED -	REVISED -					CONTRACT NO. 64E32				
		DATE -	REVISED -					FED. ROAD DIST. NO. [ILLINOIS] FED. AID PROJECT				
PLOT SCALE = 20.0000' / IN. PLOT DATE = Thu Apr 23 11:24:06 2009				SCALE:		SHEET NO. 3 OF 3 SHEETS		STA. TO STA.				