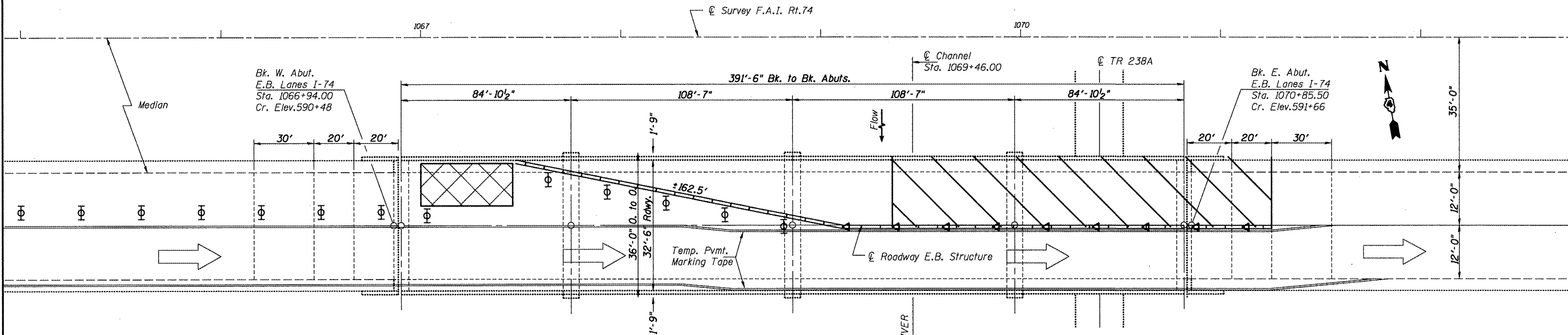


**CROSS SECTION**  
(E.B. Looking East)



**PLAN**

**SYMBOLS**

- Barrier Wall Marker
- Temporary Concrete Barrier
- Type III Barricade
- Drum w/steady burning light
- Impact Attenuator
- Work Area
- Temporary Concrete Barrier
- Direction indicator barricade w/ steady burn monodirectional light
- Traffic
- Type II barricade, drum, or vertical barricade w/steady burn monodirectional light

**NOTE**  
Refer to Highway Standard 701400 and 701402 in conjunction with this sheet for exact placement of traffic management devices and other clarifications as construction staging symbols and dimensioning were duplicated off of these standards.

SN. 048-0052 I-74  
over Spoon River

FILE NAME = SN048-0052 EB.I-74 ovr SpoonRiv.dgn	USER NAME = jonesce	DESIGNED - CEJ	REVISED - ---	<b>STATE OF ILLINOIS DEPARTMENT OF TRANSPORTATION</b>	<b>PROPOSED TRAFFIC CONTROL</b>	F.A.I. RTE. 74	SECTION (X3-17HB1-2)	COUNTY KNOX	TOTAL SHEETS 9	SHEET NO. 6
PLOT SCALE = 103.7851' / IN.	CHECKED - ---	REVISED - ---	PARAPET/ABUTMENT REPAIR			CONTRACT NO. 68858				
PLOT DATE = 4/23/2009	DATE - 04/14/2009	REVISED - ---	FED. ROAD DIST. NO. 4			ILLINOIS FED. AID PROJECT				
						SCALE: 4.4'/1.0"	SHEET NO. ___ OF ___ SHEETS		STA. _____ TO STA. _____	