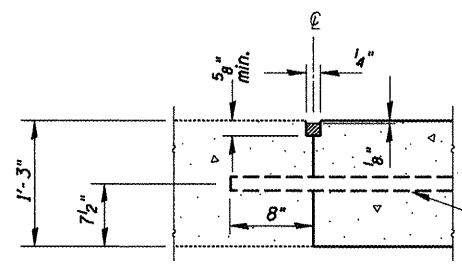
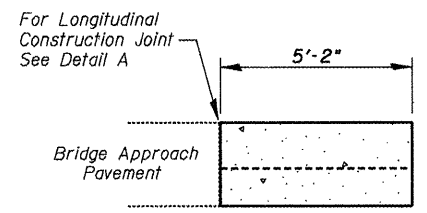


**PLAN**

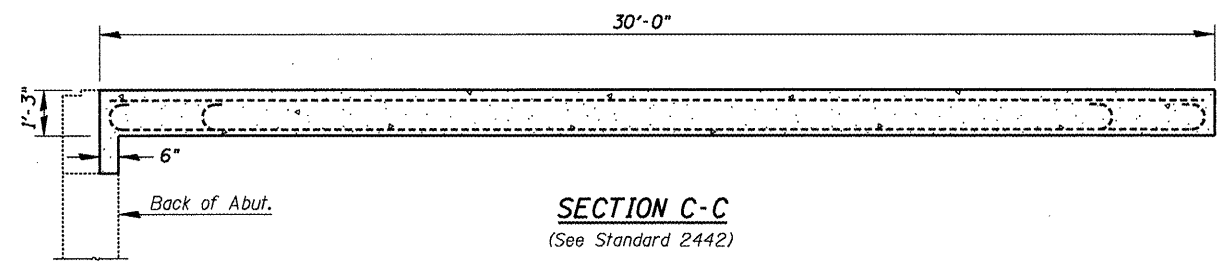
\* Full depth saw-cut following existing saw-cut. Beginning at midpoint joint shall be drilled & epoxied for #5 tie bars @ 12" centers. See slab reinforcement detail and sizing on "Bridge Approach" Standard 2442.



**DETAIL A**  
(Tie Bar Grouted in Place)



**SECTION D-D**



**SECTION C-C**  
(See Standard 2442)

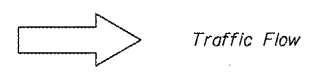
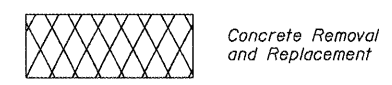
\*\* Epoxy grout Tie bars in 8" min. holes according to Article 584 of the Standard Specification. Cost included with Tie bars.

**BILL OF MATERIALS**

Bar	No.	Size	Length	Shape
a(E)	10	#9	29'-6"	
a <sub>1</sub> (E)	4	#4	29'-6"	
b(E)	30	#5	4'-10"	—
b <sub>1</sub> (E)	8	#4	4'-10"	—
***Tie Bars			EACH	30
Bridge Approach				
Pavement Removal			SQYD	17.2
Bridge Approach				
Pavement			SQYD	17.2
***Reinforcement Bars,				
Epoxy coated			POUND	1560

\*\*\* (Cost of item incidental to BRIDGE APPROACH PAVEMENT)

**SYMBOLS**



**NOTE**  
Reinforcement bars shall conform to the requirements of ATSM A 706 Gr 60. See Special Provisions.  
The cost of subbase, tie bars, reinforcement bars, excavation and placement of all materials necessary to perform this work shall be considered included in the unit cost of BRIDGE APPROACH PAVEMENT.  
Seeding, fertilizing, and mulching repair of disturbed embankment shall be done in accordance with Article 250 of the Standard Specifications. All materials and placement shall be included in the unit cost of EROSION CONTROL BLANKET.

SN.048-0052 I-74  
over Spoon Riv.

FILE NAME = SN048-0052 EB.I-74 ovr SpoonRiv.dgn	USER NAME = jonesce	DESIGNED - CEJ	REVISED - ---	<b>STATE OF ILLINOIS DEPARTMENT OF TRANSPORTATION</b>	<b>ROADWAY PLAN REPAIR DETAILS</b>	F.A.I. RTE. 74	SECTION (48-29B)-2	COUNTY KNOX	TOTAL SHEETS 9	SHEET NO. 7
PLOT SCALE = 1/83.7051' / IN.	CHECKED - MSE	REVISED - ---	REPAIR IMPACT DAMAGE			CONTRACT NO. 68858				
PLOT DATE = 4/24/2009	DATE - 04/20/2009	REVISED - ---	FED. ROAD DIST. NO. 4			ILLINOIS FED. AID PROJECT				
SCALE: _____ SHEET NO. ___ OF ___ SHEETS		STA. _____ TO STA. _____								