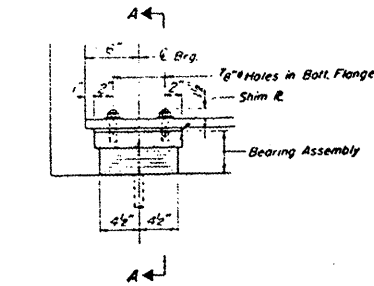


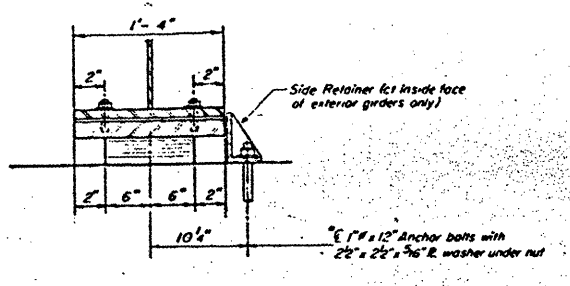
FOR INFORMATION ONLY - 090-0132

BEARINGS & DIAPHRAGMS

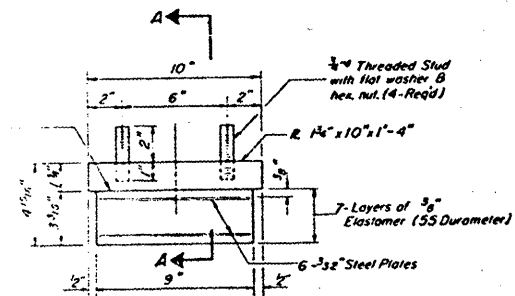
ROUTE	SECTION	COUNTY	TOTAL SHEETS	SHEET NO.
I-155	[90-(107,107-2,108)HB]P	TAZEWELL	13	7



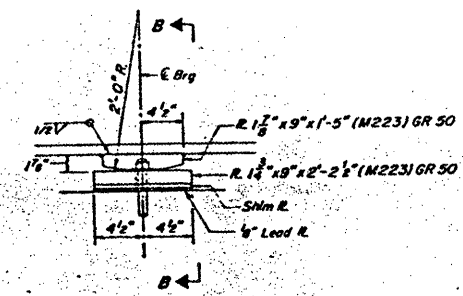
TYPE I ELASTOMERIC EXP. BRG.



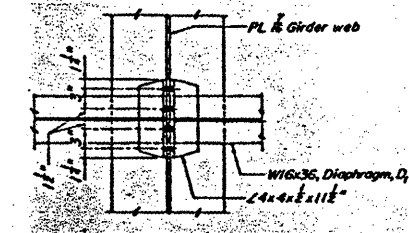
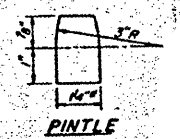
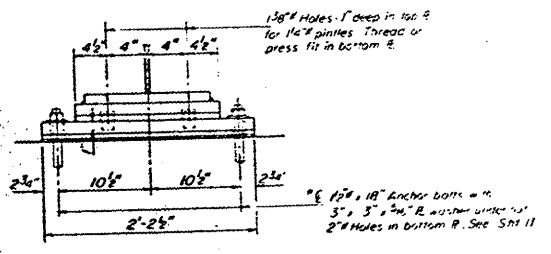
*Notes: Anchor bolts of fixed bearings may be built into the masonry. See sheet No. 11 for Anchor Bolt Installation.



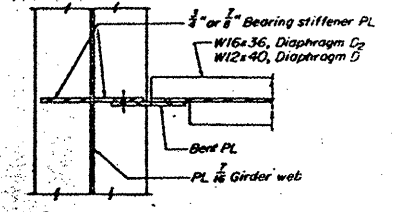
Note: Shim plates shall not be placed under Bearing Assembly.



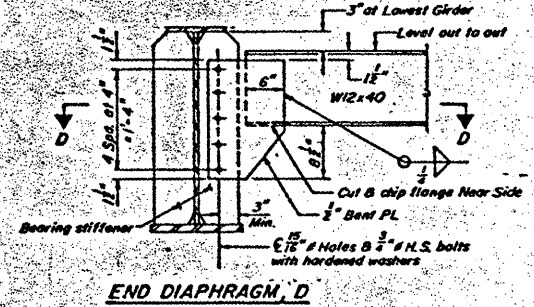
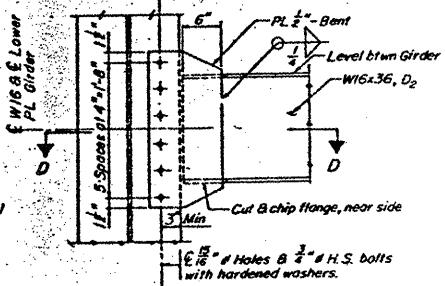
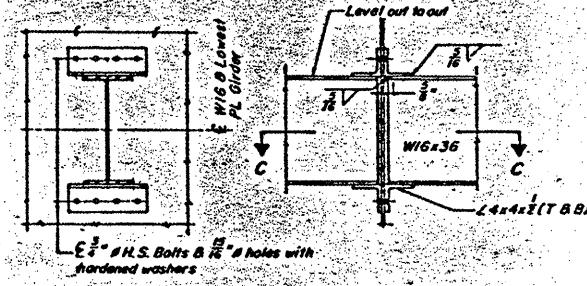
FIXED BEARING



INTERIOR DIAPHRAGM, D₁



INTERIOR DIAPHRAGM, D₂



PLAN SHEETS