

F.A.I. RTE.	SECTION	COUNTY	TOTAL SHEETS	SHEET NO.
39	57-2I	MCLEAN	18	1
FED. ROAD DIST. NO. 113		ILLINOIS	CONTRACT NO. 70797	

STATE OF ILLINOIS
DEPARTMENT OF TRANSPORTATION
DIVISION OF HIGHWAYS
**PROPOSED
HIGHWAY PLANS**

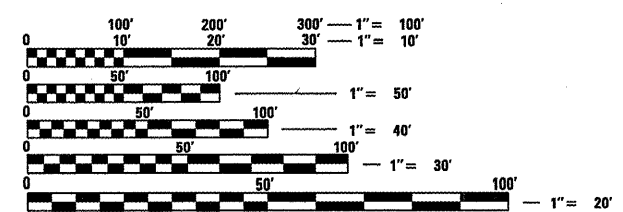
FOR INDEX OF SHEETS, SEE SHEET NO. 2

FOR SUMMARY OF QUANTITIES, SEE SHEET NO. 4

CURRENT ADT = 20,600 (2008)

DESIGN DESIGNATION
INTERSTATE
N/A

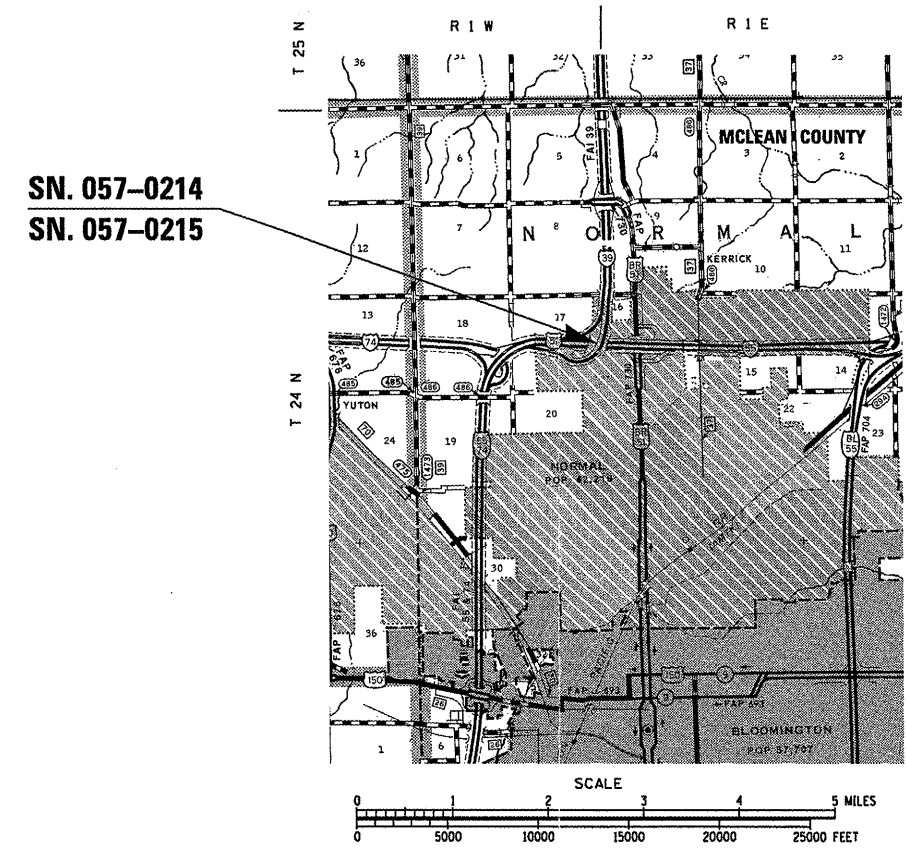
FAI ROUTE 39
SECTION 57-2I
MCLEAN COUNTY
BRIDGE APPROACH ROADWAY
OVER I-55 0.3 MI W OF BUS 51 IN NORMAL
C-95-035-09



FULL SIZE PLANS HAVE BEEN PREPARED USING STANDARD ENGINEERING SCALES. REDUCED SIZED PLANS WILL NOT CONFORM TO STANDARD SCALES. IN MAKING MEASUREMENTS ON REDUCED PLANS, THE ABOVE SCALES MAY BE USED.

J.U.L.I.E.
JOINT UTILITY LOCATION INFORMATION FOR EXCAVATION
1-800-892-0123
OR 811

PROJECT ENGINEER - NANCY FASIG
PROJECT MANAGER - TODD BLACK
PHONE: (217)465-4181
CONTRACT NO. 70797



STATE OF ILLINOIS
DEPARTMENT OF TRANSPORTATION
DIVISION OF HIGHWAYS

SUBMITTED 3/27 20 09
Joseph E. Anderson
DEPUTY DIRECTOR OF HIGHWAYS, REGION ENGINEER

May 8, 20 09
Charles J. Ingersoll
ENGINEER OF DESIGN AND ENVIRONMENT

May 8, 20 09
Christine M. Reed
DIRECTOR OF HIGHWAYS, CHIEF ENGINEER

PRINTED BY THE AUTHORITY
OF THE STATE OF ILLINOIS