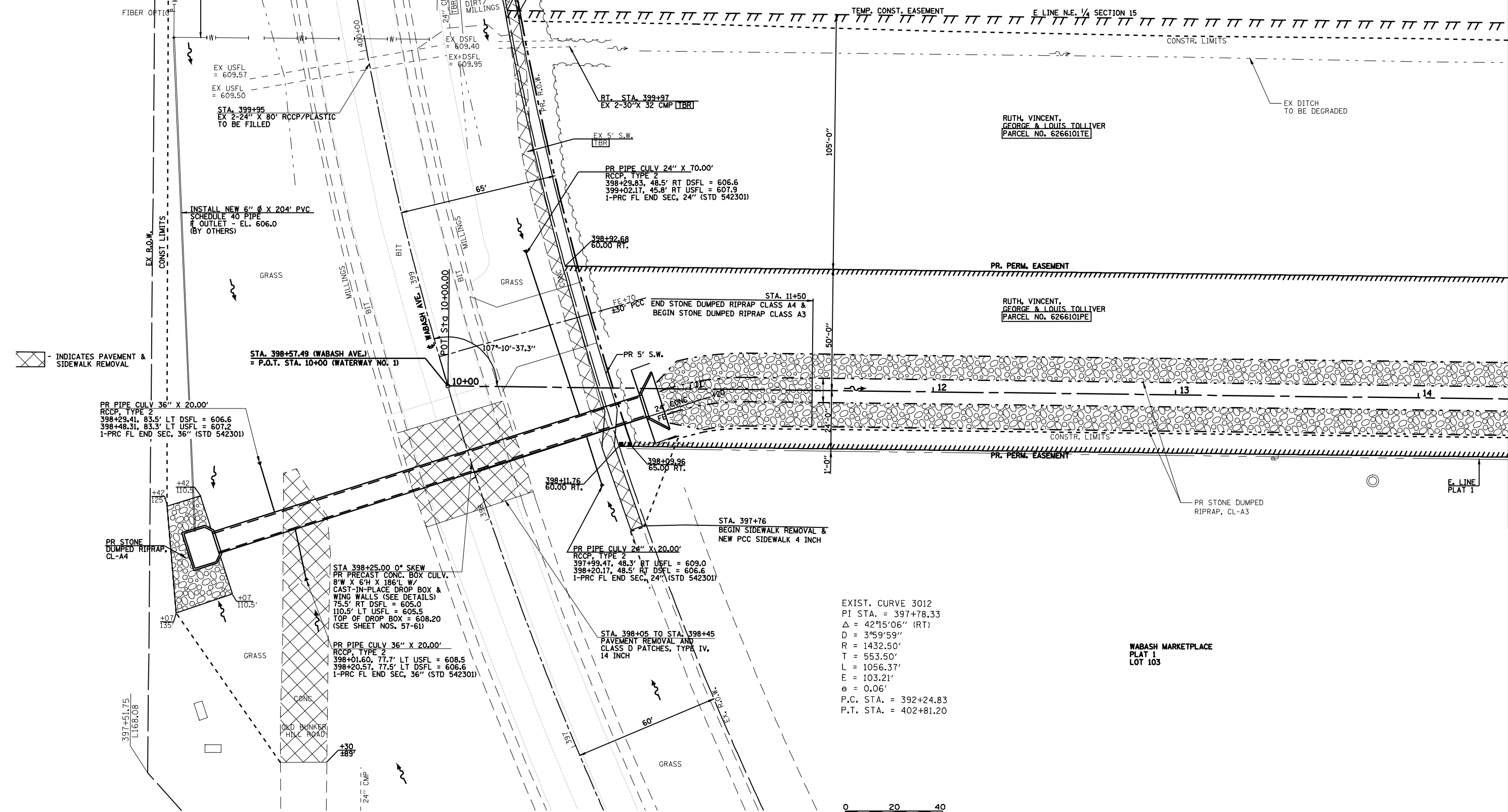
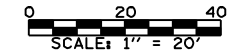


MATCH LINE - STA. 400+60.00

APPROXIMATE LOCATION OF EXISTING 6" Ø PVC PIPE RUNNING FROM PUMP STATION AT NISSAN DEALERSHIP. TO BE FIELD VERIFIED BY EXPLORATORY TRENCH 72" DEPTH. APPROXIMATE LOCATION OF 90° BEND STA. 400+20 77' LT.



INDICATES PAVEMENT & SIDEWALK REMOVAL



EXIST. CURVE 3012
 PI STA. = 397+78.33
 $\Delta = 42^{\circ}15'06''$ (RT)
 $D = 3^{\circ}59'59''$
 $R = 1432.50'$
 $T = 553.50'$
 $L = 1056.37'$
 $E = 103.21'$
 $e = 0.06'$
 P.C. STA. = 392+24.83
 P.T. STA. = 402+81.20

WABASH MARKETPLACE
 PLAT 1
 LOT 103

MATCH LINE - STA. 14+35.00

FILE NAME =	USER NAME = laughlinr1	DESIGNED -	REVISED -	<p>Allen Henderson & Associates, Inc. Civil and Structural Engineers Springfield, IL. 62703 Phone: (217)544-8033 IL Design Firm No. 184-001907</p>	<p align="center">PLAN WATERWAY NO. 1</p>		F.A.U. RTE.	SECTION	COUNTY	TOTAL SHEETS	SHEET NO.
e:\pwwork\pwwdot\LAUGHLINRL\0143507\072402-sht-plan-waterway1.dgn	DRAWN -	REVISED -	8012				21(I-3)	SANGAMON	147	12	
PLOT SCALE = 48.0000' / IN.	CHECKED -	REVISED -	CONTRACT NO. 72A02								
PLOT DATE = May-29-2009 07:50:53AM	DATE -	REVISED -	FED. ROAD DIST. NO.		ILLINOIS FED. AID PROJECT						