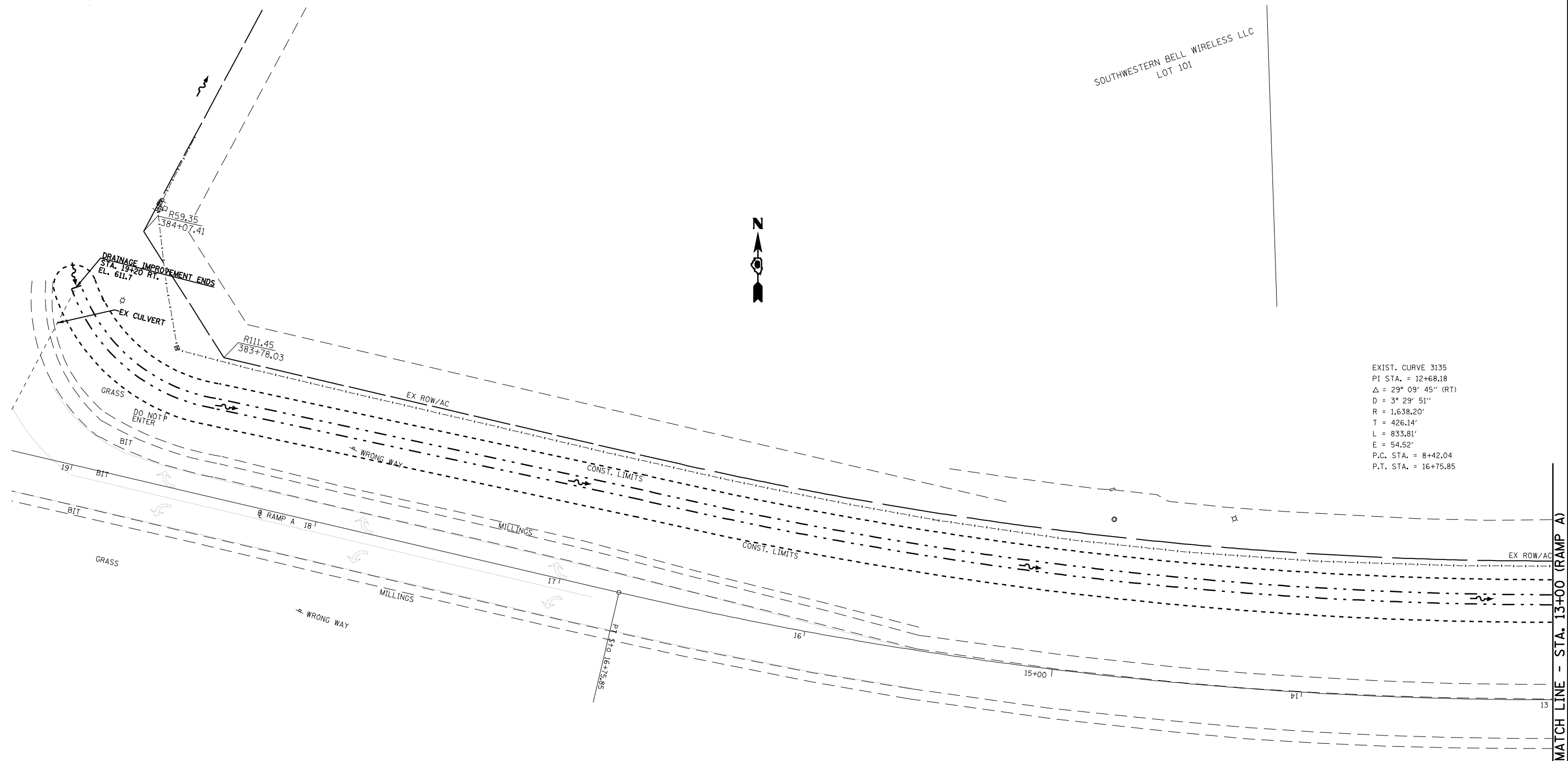


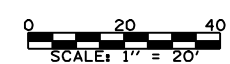
SOUTHWESTERN BELL WIRELESS LLC
LOT 101



EXIST. CURVE 3135
PI STA. = 12+68.18
 $\Delta = 29^\circ 09' 45''$ (RT)
D = 3' 29' 51"
R = 1,638.20'
T = 426.14'
L = 833.81'
E = 54.52'
P.C. STA. = 8+42.04
P.T. STA. = 16+75.85



MATCH LINE - STA. 13+00 (RAMP A)



FILE NAME =	USER NAME = laughlinr1	DESIGNED -	REVISED -
e:\pwwork\pwidot\LAUGHLINRL\0143507\0672402-sht-plan-ramp.edgn		DRAWN -	REVISED -
	PLOT SCALE = 40.0000' / IN.	CHECKED -	REVISED -
	PLOT DATE = May-18-2009 03:16:21PM	DATE -	REVISED -



Allen Henderson & Associates, Inc.
Civil and Structural Engineers Springfield, IL
62703 Phone: (217)544-8033 IL Design Firm
No. 184-001907

PLAN RAMP A	
SCALE: 1" = 20'	SHEET NO. 16 OF 147 SHEETS
STA. 13+00.00 TO STA. 19+20.00	

F.A.U. RTE.	SECTION	COUNTY	TOTAL SHEETS	SHEET NO.
8012	21(I-3)	SANGAMON	147	16
CONTRACT NO. 72A02				
FED. ROAD DIST. NO. ILLINOIS FED. AID PROJECT				