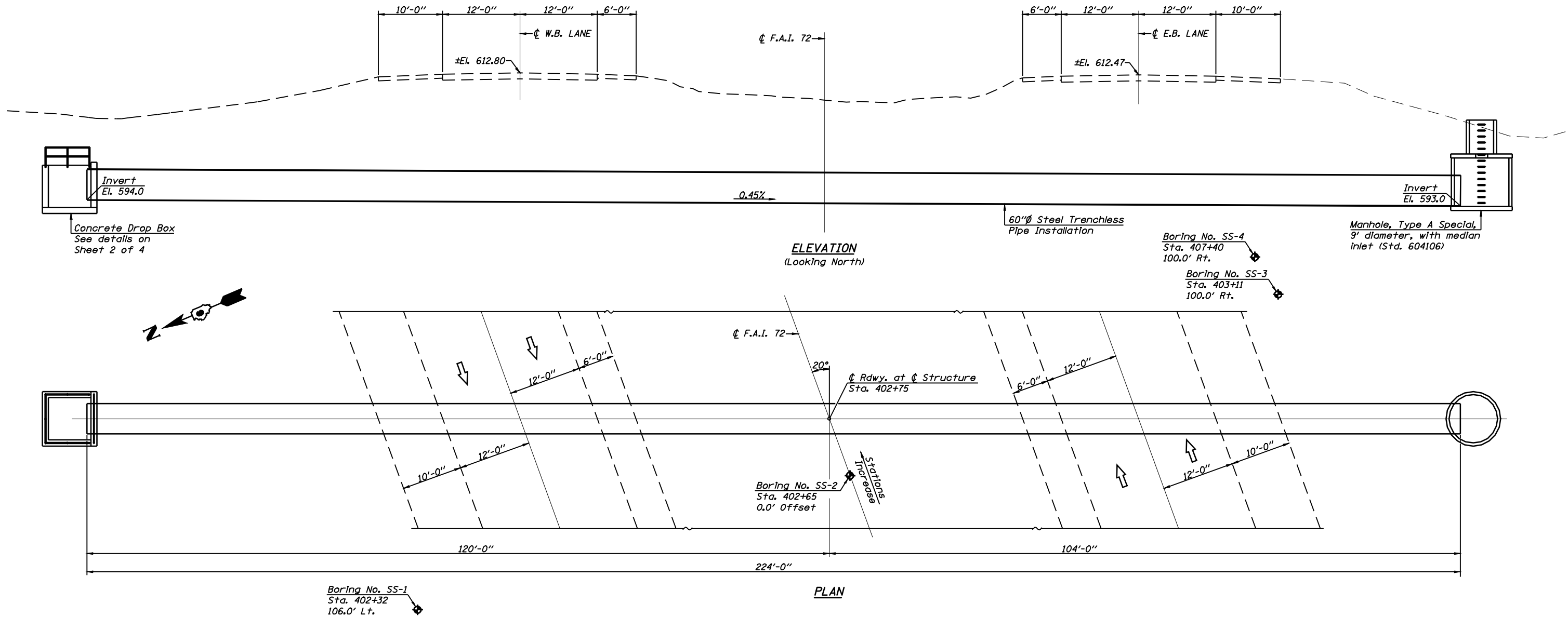


Benchmark #99: Chiseled "□" in top of light pole base at S.E. Corner of 2nd pole on north edge of Exit #91 at Sta. 389+17.4, 106' Lt. (I-72), El. 611.083

Benchmark #98: Chiseled "□" in center of 4'x8' concrete box on north side of I-72 east of Exit #91 to Wabash Avenue at Sta. 405+36.4, 89.4' Lt. (I-72) El. 611.013

Benchmark #TA-10: Chiseled "□" in S.E. corner light pole foundation, west side of Wabash Ave. and across road from Cingular building, north of north I-72 ramps. El. 615.206



**GENERAL NOTES**

Reinforcement bars shall conform to the requirements of A.A.S.H.T.O. M-32 or M-322, Grade 60.  
Concrete required for the construction of the drop box is included in the quantity for concrete structures.

**DESIGN STRESSES**

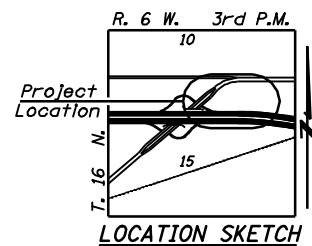
**FIELD UNITS**  
f'c = 3,500 p.s.i.  
fy = 60,000 p.s.i. (Reinforcement)

**PRECAST UNITS**

f'c = 5000 p.s.i.  
fy = 65000 p.s.i. (Welded wire fabric)

**TOTAL BILL OF MATERIAL**

Item	Unit	Quantity
60"Ø Steel Trenchless Pipe	Foot	224
Concrete Structures	Cu. Yd.	10.7
Reinforcement Bars	Pound	1550
Pipe Handrail	Foot	30



**GENERAL PLAN & ELEVATION  
INTERSTATE 72 OVER  
WATERWAY NO. 1  
STA. 402+75.00  
SANGAMON COUNTY**



**Allen Henderson & Associates, Inc.**  
Civil and Structural Engineers Springfield, IL  
62708 Phone: (217)544-8088 IL Design Firm  
No. 184-001907

SHEET NO. 1  
OF 4 SHEETS

F.A.U. RTE.	SECTION	COUNTY	TOTAL SHEETS	SHEET NO.
8012	21(I-3)	SANGAMON	147	65
CONTRACT NO. 72A02				
FED. ROAD DIST. NO.		ILLINOIS FED. AID PROJECT		