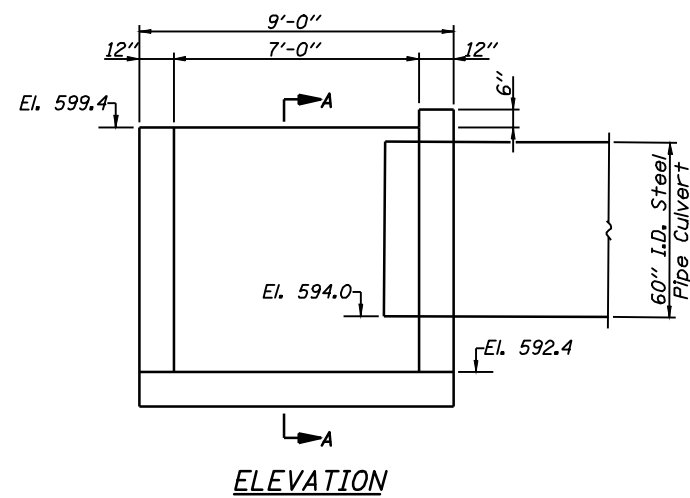
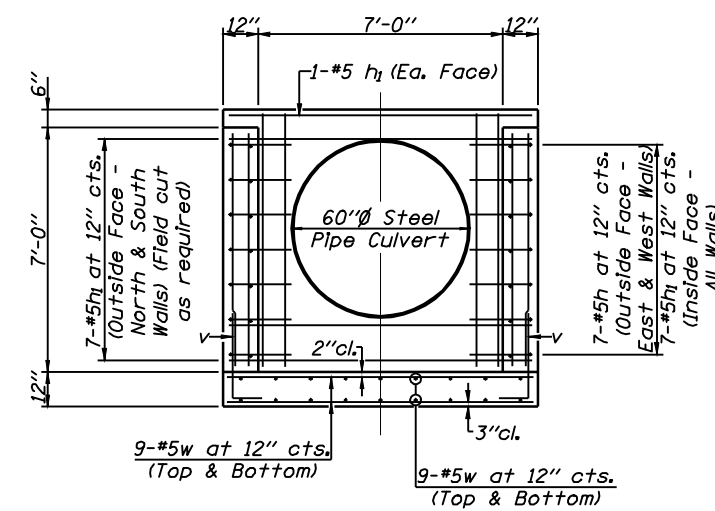


PLAN



ELEVATION



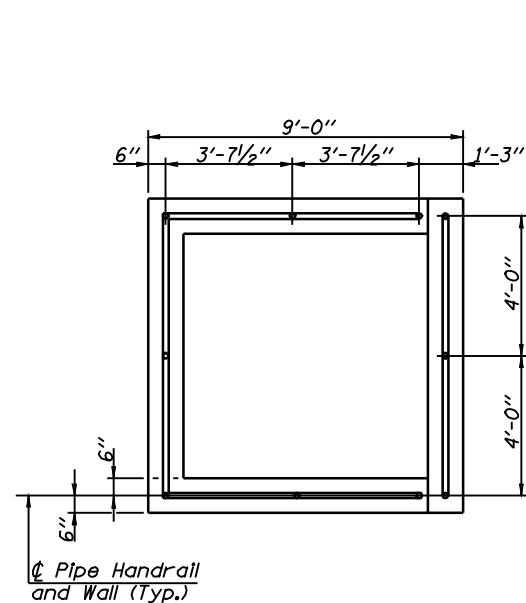
SECTION A-A

TOTAL BILL OF MATERIAL
DROP INLET

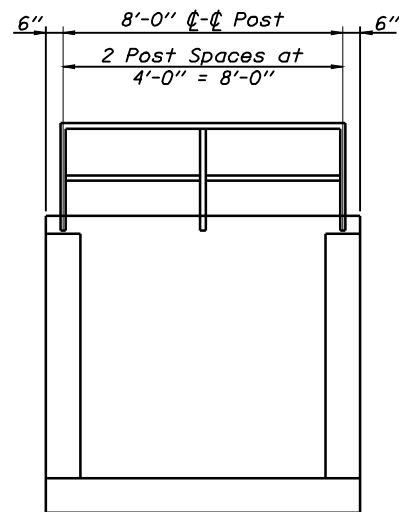
Bar	No.	Size	Length	Shape
h	14	#5	12'-8"	□
h1	44	#5	8'-8"	—
v	32	#5	4'-0"	L
v1	50	#5	6'-9"	—
v2	20	#5	7'-3"	—
w	36	#5	8'-8"	—
Concrete Structures			Cu. Yd.	10.7
Reinforcement Bars			Pound	1550
Pipe Handrail			Foot	30

NOTES

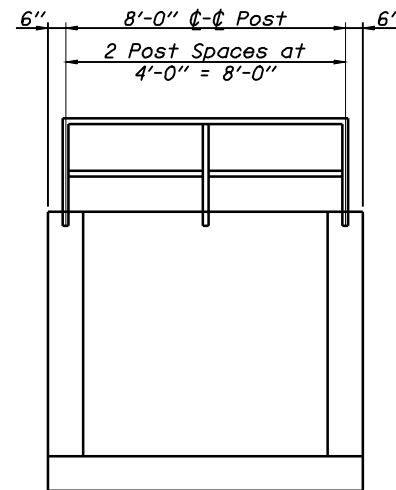
Handrail shall conform to the requirements of Section 509 of the Standard Specifications. The Pipe Handrail shall be painted in accordance with Section 506 of the Standard Specifications. The finish coat shall match Munsell Glossy Color 5B 7/1 Gray. All steel pipe to be ASTM A53. The unit cost per lineal foot for Pipe Handrail shall include furnishing and installing the posts, sleeves, fittings, grout, pipe, primer and paint.



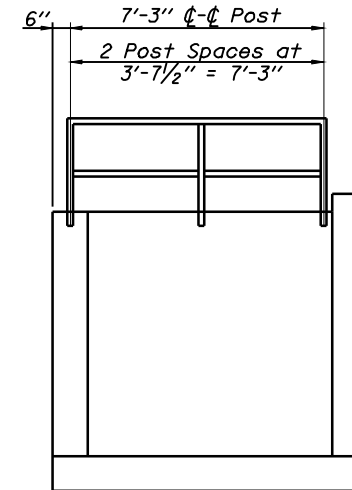
RAIL PLAN



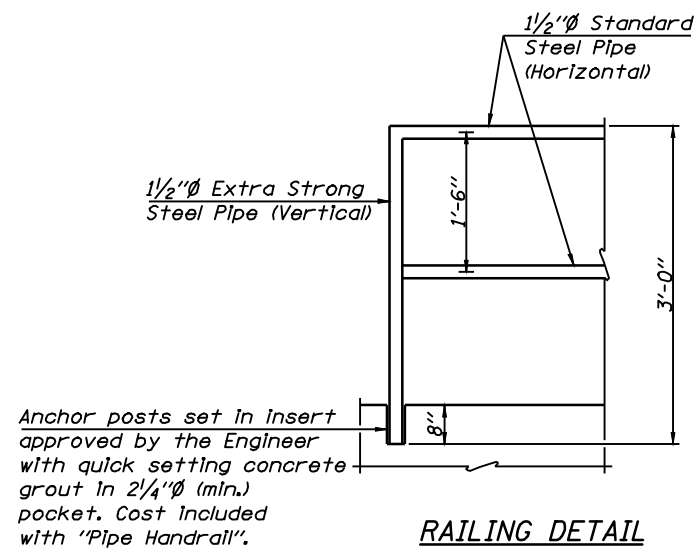
ELEVATION
(South Rail)



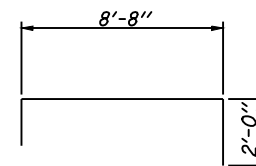
ELEVATION
(North Rail)



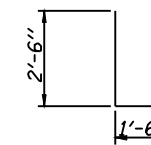
ELEVATION
(East & West Rail)



RAILING DETAIL



BAR h



BAR v

DROP INLET DETAILS
INTERSTATE 72 OVER
WATERWAY NO. 1
STA. 402+75.00
SANGAMON COUNTY



Allen Henderson & Associates, Inc.
Civil and Structural Engineers Springfield, IL
62708 Phone: (217)544-8033 IL Design Firm
No. 184-001907

SHEET NO. 2
OF 4 SHEETS

F.A.U. RTE.	SECTION	COUNTY	TOTAL SHEETS	SHEET NO.
8012	21(I-3)	SANGAMON	147	66
CONTRACT NO. 72A02				
FED. ROAD DIST. NO.		ILLINOIS FED. AID PROJECT		