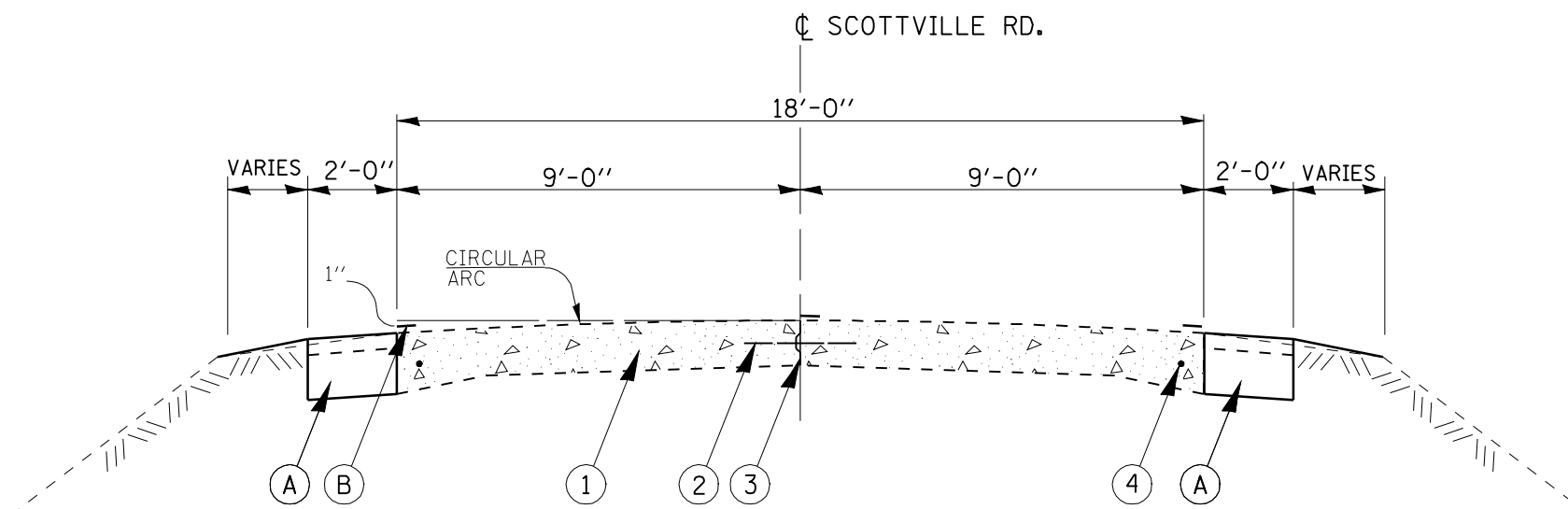


STA. 222+22 TO STA. 340+72

LEGEND

- ① EXISTING 9''-6''-9'' P.C.C. PAVEMENT
- ② EXISTING 1/2'' ϕ DEFORMED TIE BAR 4' LONG @ 5' CENTERS
- ③ EXISTING LONGITUDINAL METAL JOINT
- ④ 3/4'' ϕ SMOOTH BAR
- Ⓐ PROPOSED HMA SHOULDERS, 9'', CONSISTING OF:
* HMA SURFACE COURSE, MIX "C", N 50, 2'' DEPTH
* HMA BINDER COURSE, IL-19.0, N50, 7'' DEPTH
- Ⓑ PROPOSED PAINT PAVEMENT MARKING - LINE 4''



**STA. 340+72 TO STA. 353+76 (NORTH)
STA. 340+72 TO STA. 353+46 (SOUTH)**

FILE NAME =	USER NAME = woodsej	DESIGNED - RTS	REVISED -	STATE OF ILLINOIS DEPARTMENT OF TRANSPORTATION	TYPICAL CROSS SECTIONS			F.A.S. RTE.	SECTION	COUNTY	TOTAL SHEETS	SHEET NO.
ea:\pwork\pwidot\WOODSEJ\0143531\0672091-sht-typocrd.dgn		DRAWN - RTS	REVISED -		731	(1)I-1	MACOUPIN	8	4			
PLOT SCALE = 40.0000' / IN.		CHECKED - MEB	REVISED -		CONTRACT NO. 72C91							
PLOT DATE = May-21-2009 11:24:14AM		DATE - 05-19-09	REVISED -		SCALE:	SHEET NO. 1 OF 1 SHEETS	STA.	TO STA.	ILLINOIS FED. AID PROJECT			