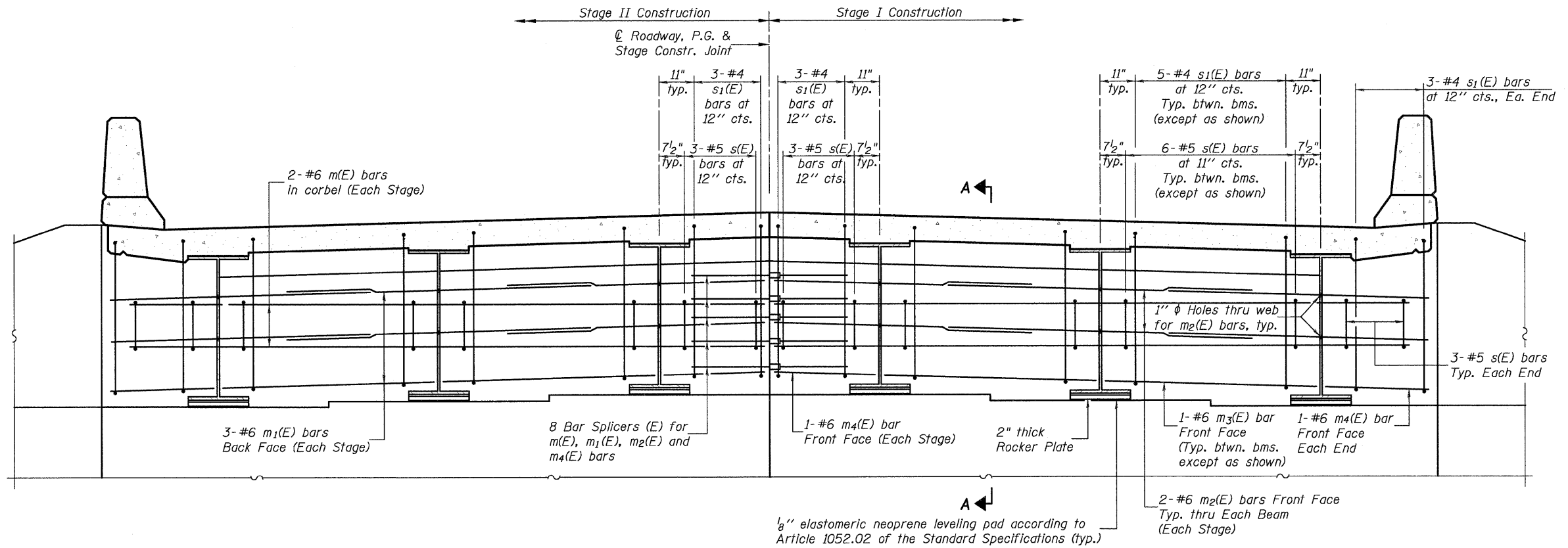


042004L76B01L3.DIAF.DGN AUG. 29, 2008

STATE OF ILLINOIS
DEPARTMENT OF TRANSPORTATION

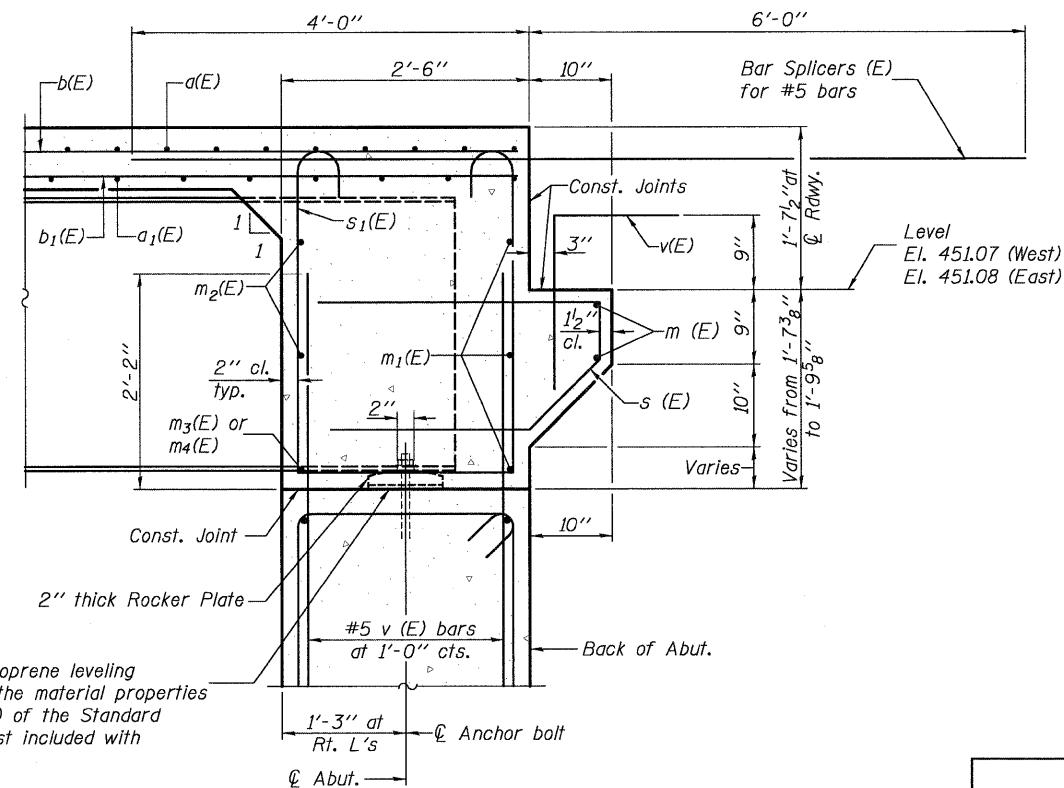


DIAPHRAGM ELEVATION AT WEST ABUTMENT
(Looking West)

Notes:

Reinforcement bars in diaphragm are billed with superstructure on sheet 12 of 21.
Concrete in diaphragm is included with Concrete Superstructure on sheet 12 of 21.
For details of bars s(E) & s1(E) see sheet 12 of 21.
The s(E) and s1(E) bars shall be placed parallel to the beams. Spacing for these bars shall be at right angles to the beams.

MIN. BAR LAP
#6 bar = 2'-7"



SECTION A-A

INTEGRAL ABUTMENT DIAPHRAGM DETAILS

DESIGNED	K.M.M.
CHECKED	L.D.G.
DRAWN	K.H.L.
CHECKED	B.G.H.

SI-DS2 5-16-08

SHEET NO. 13	F.A.P. RTE.	SECTION	COUNTY	TOTAL SHEETS	SHEET NO.
	325	3BR-2	JERSEY	90	54
21 SHEETS	S.N. 042-0041		CONTRACT NO. 76B01		
FED. ROAD DIST. NO. ILLINOIS FED. AID PROJECT					