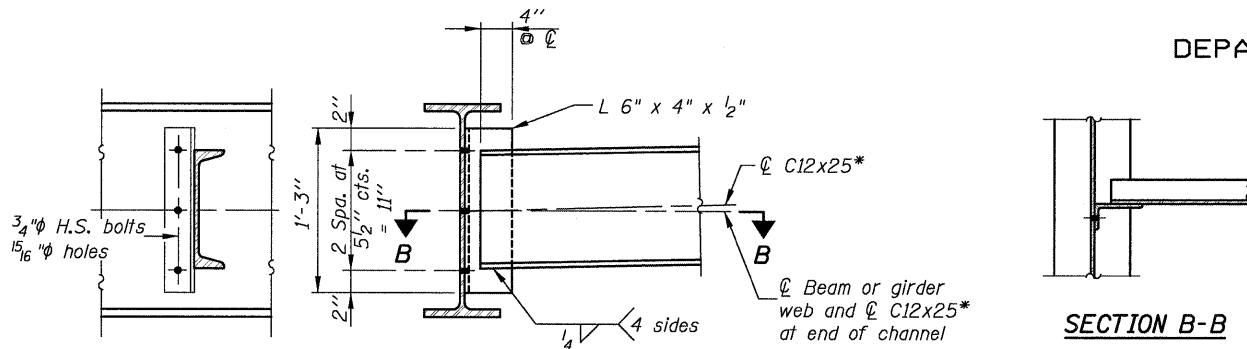
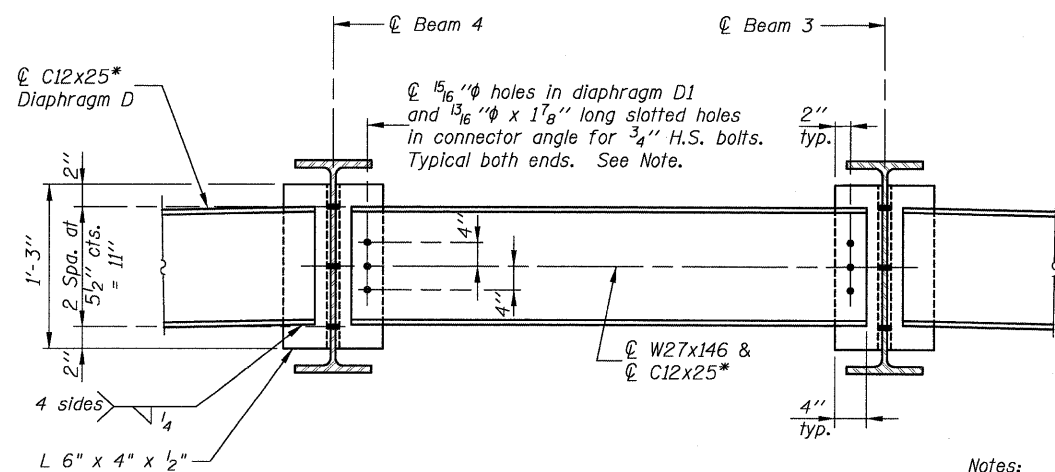
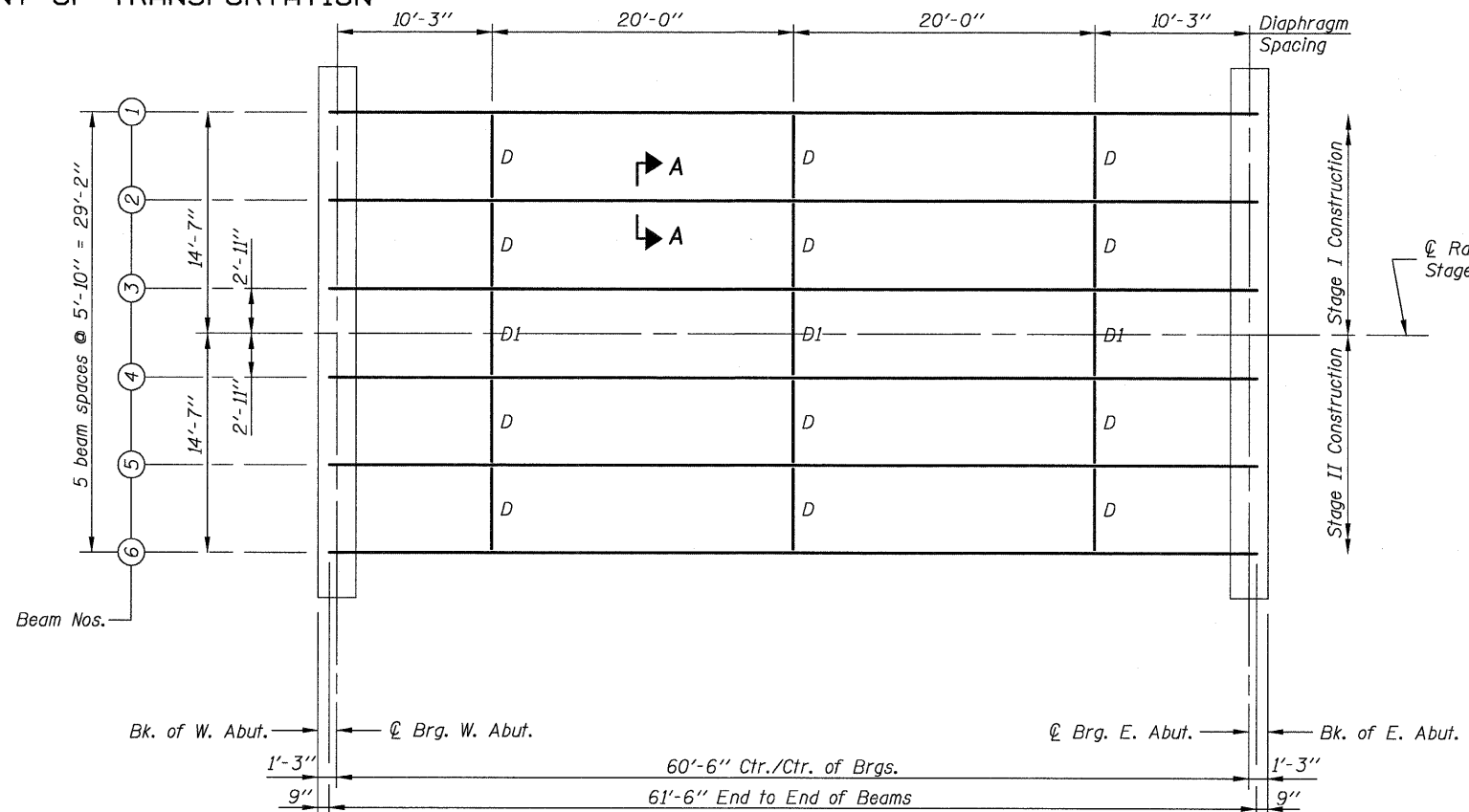
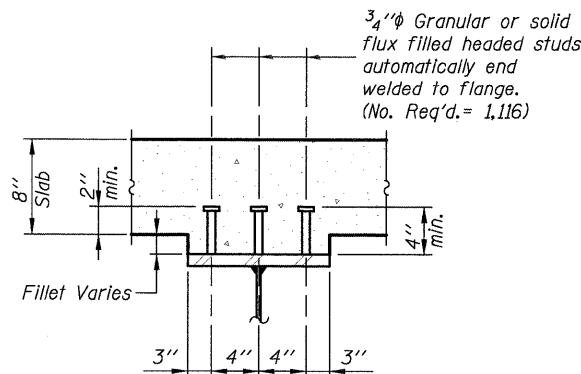
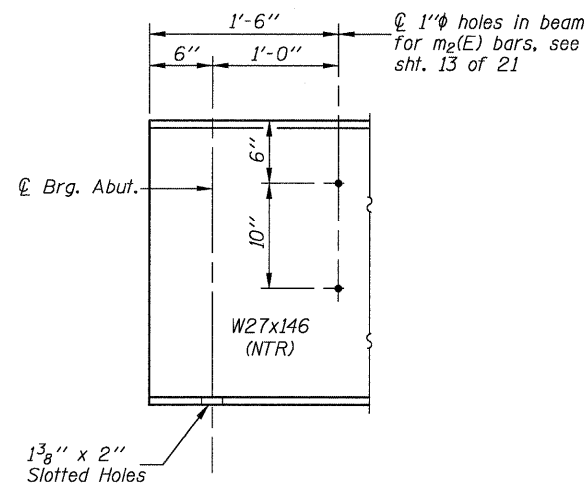


0420041-76B014-FRMG.DGN DEC. 1, 2008

STATE OF ILLINOIS
DEPARTMENT OF TRANSPORTATION

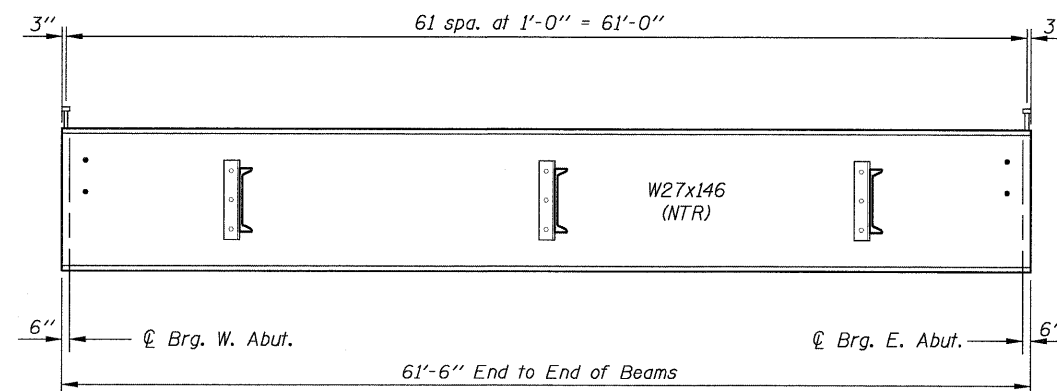


* Alternate channel C12x30 is permitted to facilitate material acquisition. Calculated weight of structural steel is based on the lighter section.



Notes:

Two hardened washers required for each set of oversized holes.
All cross frames or diaphragms between beams or girders shall be installed with erection pins and bolts in accordance with the erection plan approved by the Engineer. Individual cross frames or diaphragms at supports may be temporarily disconnected to install bearing anchor rods.
Load carrying components designated "NTR" shall conform to the Supplemental Requirements for Notch Toughness, Zone 2.
Bolts in slots shall be finger tight until the second stage pour is complete. Position slots so bolts start at one end with no concrete load and finish near the opposite end under deck load allowing maximum displacement without laterally stressing main members. All holes shall have appropriate hardened or plate washers.



DESIGNED	B.G.H.
CHECKED	L.D.G.
DRAWN	K.H.L.
CHECKED	B.G.H.

		STRUCTURAL STEEL			
SHEET NO. 14	F.A.P. RTE. 325	SECTION 3BR-2	COUNTY JERSEY	TOTAL SHEETS 90	SHEET NO. 55
21 SHEETS		S.N. 042-0041		CONTRACT NO. 76B01	
		FED. ROAD DIST. NO. ILLINOIS FED. AID PROJECT			