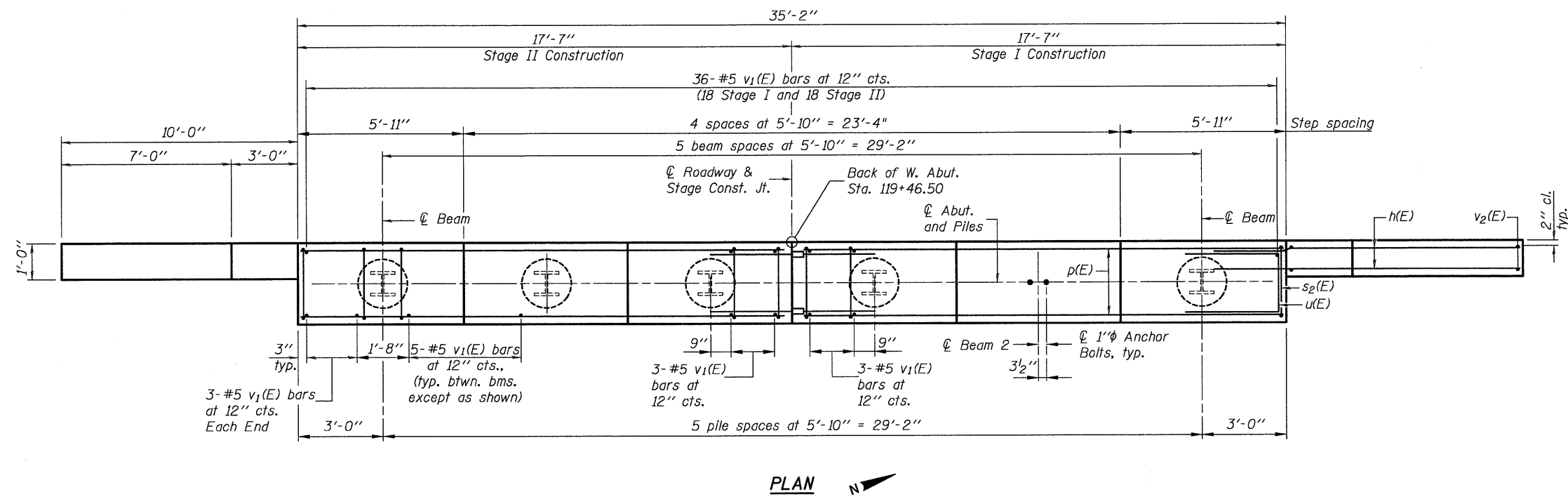
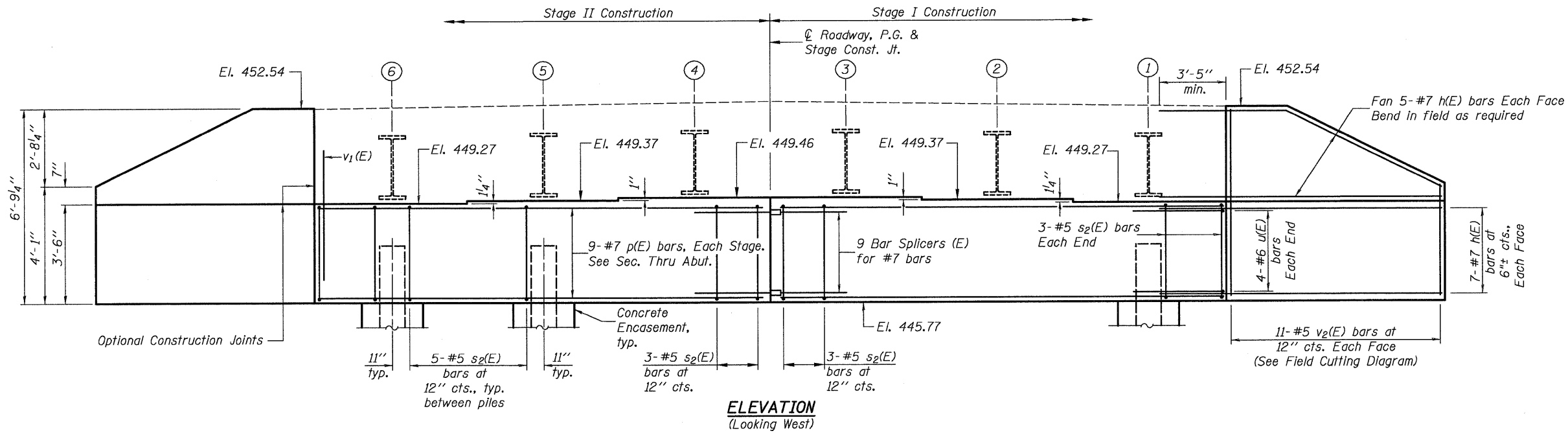


042004L76B0116.WABT.DGN DEC. 1, 2008

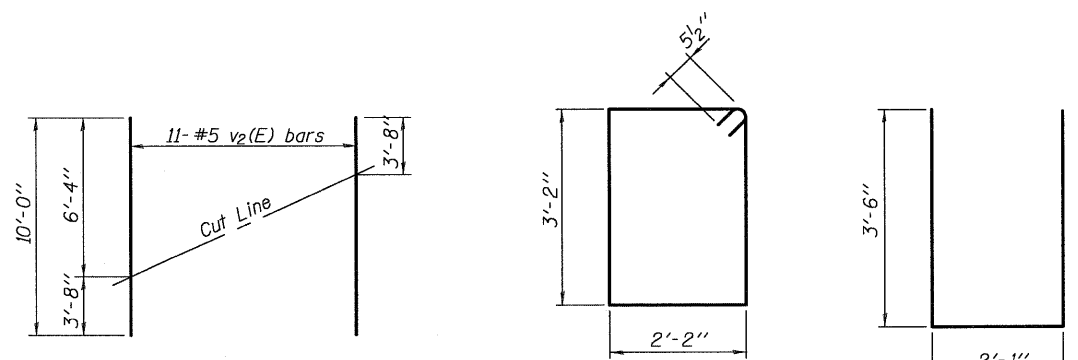
Note: Four steps monolithically with cap.

STATE OF ILLINOIS
DEPARTMENT OF TRANSPORTATION



PILE DATA

Type: HP 12x53
 Nominal Required Bearing: 419 kips
 Factored Resistance Available: 210 kips
 Est. Length: 55 feet
 No. Production Piles: 6
 No. Test Piles: 0



BILL OF MATERIAL

Bar	No.	Size	Length	Shape
h(E)	48	#7	14'-0"	
p(E)	18	#7	17'-3"	
s2(E)	32	#5	11'-7"	□
u(E)	8	#6	9'-1"	□
v1(E)	68	#5	4'-4"	
v2(E)	22	#5	10'-0"	
Structure Excavation			Cu. Yd.	71
Concrete Structures			Cu. Yd.	16.0
Reinforcement Bars, Epoxy Coated			Pound	3,040
Furnishing Steel Piles HP 12x53			Foot	330
Driving Piles			Foot	330
Pile Shoes			Each	6
Concrete Encasement			Cu. Yd.	2.1

For details of Bar Splicers, see sheet 18 of 21.
 For details of piles and Concrete Encasement, see sheet 19 of 21.

DESIGNED	L.D.G.
CHECKED	B.G.H.
DRAWN	K.H.L.
CHECKED	B.G.H.
AI-0	5-16-08

SHEET NO. 16	F.A.P. RTE.	SECTION	COUNTY	TOTAL SHEETS	SHEET NO.
	325	3BR-2	JERSEY	90	57
21 SHEETS	S.N. 042-0041		CONTRACT NO. 76B01		
	FED. ROAD DIST. NO. ILLINOIS FED. AID PROJECT				

H.M. & G. NO. 6020.III