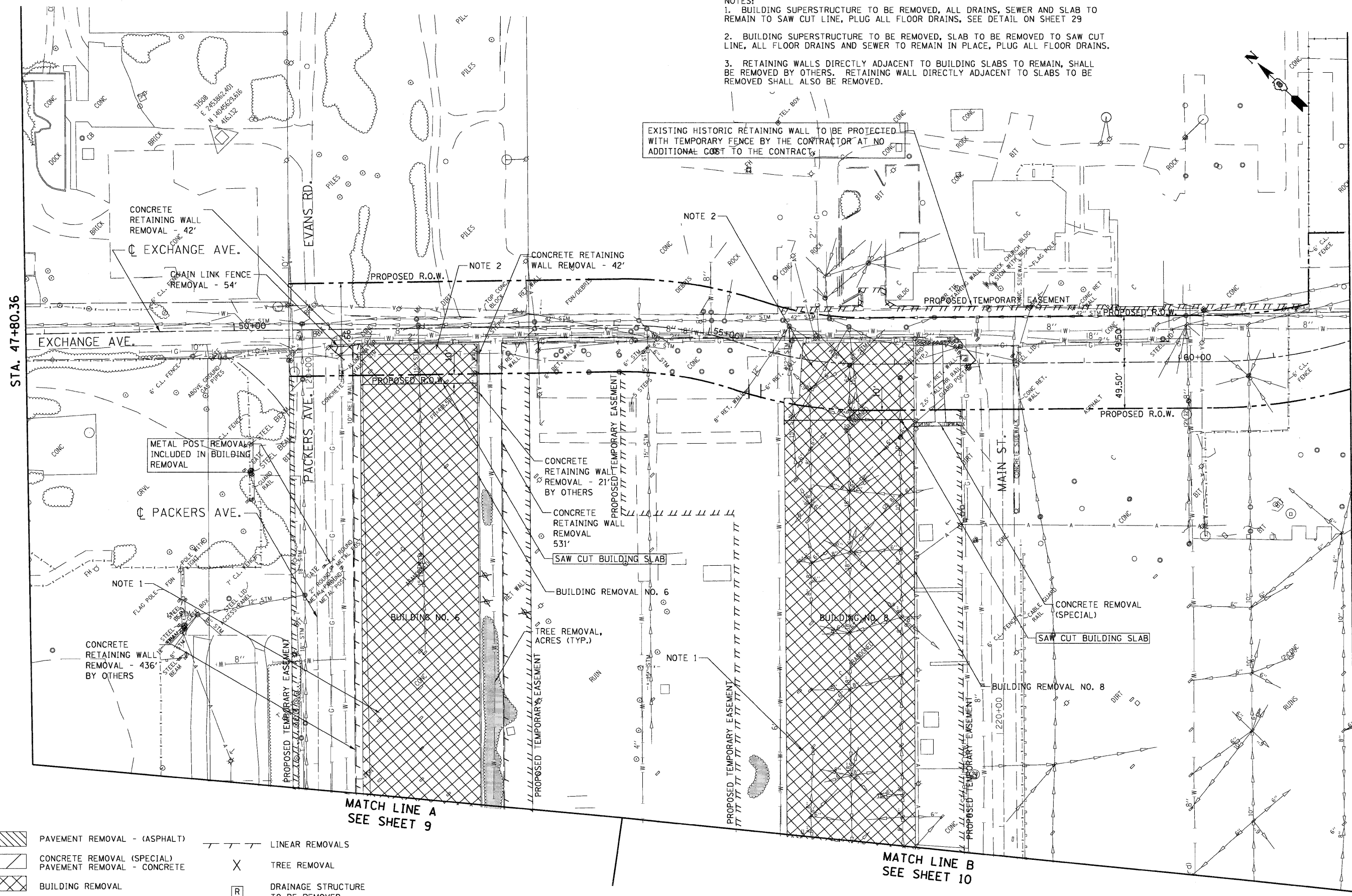


- NOTES:
- BUILDING SUPERSTRUCTURE TO BE REMOVED, ALL DRAINS, SEWER AND SLAB TO REMAIN TO SAW CUT LINE, PLUG ALL FLOOR DRAINS. SEE DETAIL ON SHEET 29
  - BUILDING SUPERSTRUCTURE TO BE REMOVED, SLAB TO BE REMOVED TO SAW CUT LINE, ALL FLOOR DRAINS AND SEWER TO REMAIN IN PLACE, PLUG ALL FLOOR DRAINS.
  - RETAINING WALLS DIRECTLY ADJACENT TO BUILDING SLABS TO REMAIN, SHALL BE REMOVED BY OTHERS. RETAINING WALL DIRECTLY ADJACENT TO SLABS TO BE REMOVED SHALL ALSO BE REMOVED.

EXISTING HISTORIC RETAINING WALL TO BE PROTECTED WITH TEMPORARY FENCE BY THE CONTRACTOR AT NO ADDITIONAL COST TO THE CONTRACTOR



\ORCDNN-99-40C1PT.LDN, \ORCDNN-27-BORGER.LDN, \ORCDNN-99-LAYOUT.LDN, \ORCDNN-99-LEGEND.LDN, \ORCDNN-2A-REMOVAL.SLDON, \ORCDNN-99-GEOMETRICS.DGN  
 \ORCDNN-99-40C1PT.LDN, \ORCDNN-27-BORGER.LDN, \ORCDNN-99-LAYOUT.LDN, \ORCDNN-99-LEGEND.LDN, \ORCDNN-2A-REMOVAL.SLDON, \ORCDNN-99-GEOMETRICS.DGN  
 \ORCDNN-99-40C1PT.LDN, \ORCDNN-27-BORGER.LDN, \ORCDNN-99-LAYOUT.LDN, \ORCDNN-99-LEGEND.LDN, \ORCDNN-2A-REMOVAL.SLDON, \ORCDNN-99-GEOMETRICS.DGN

LEGEND	
	PAVEMENT REMOVAL - (ASPHALT)
	CONCRETE REMOVAL (SPECIAL)
	PAVEMENT REMOVAL - CONCRETE
	BUILDING REMOVAL
	TREE REMOVAL, ACRES
	LINEAR REMOVALS
	TREE REMOVAL
	DRAINAGE STRUCTURE TO BE REMOVED

MATCH LINE A  
SEE SHEET 9

MATCH LINE B  
SEE SHEET 10

STATE OF ILLINOIS  
DEPARTMENT OF TRANSPORTATION  
I-70 CONNECTION

DEMOLITION PLAN  
EXCHANGE AVENUE

FILE NAME =	USER NAME = #USER#	DESIGNED - JB	REVISED -
#FILE#		DRAWN - JB	REVISED -
	PLOT SCALE = #SCALE#	CHECKED - ACL	REVISED -
	PLOT DATE = #DATE#	DATE - 05/15/09	REVISED -



SCALE: 1"=50' SHEET NO. OF SHEETS STA. TO STA.

F.A.P. RTE.	SECTION	COUNTY	TOTAL SHEETS	SHEET NO.
998	82-IDM	ST. CLAIR	41	12
FED. ROAD DIST. NO.		ILLINOIS FED. AID PROJECT		CONTRACT NO. 76C39