

F.A.P. RTE.	SECTION	COUNTY	TOTAL SHEETS	SHEET NO.
799	1-1	ST CLAIR	15	1
		ILLINOIS	CONTRACT NO. 76D14	

STATE OF ILLINOIS  
DEPARTMENT OF TRANSPORTATION  
DIVISION OF HIGHWAYS

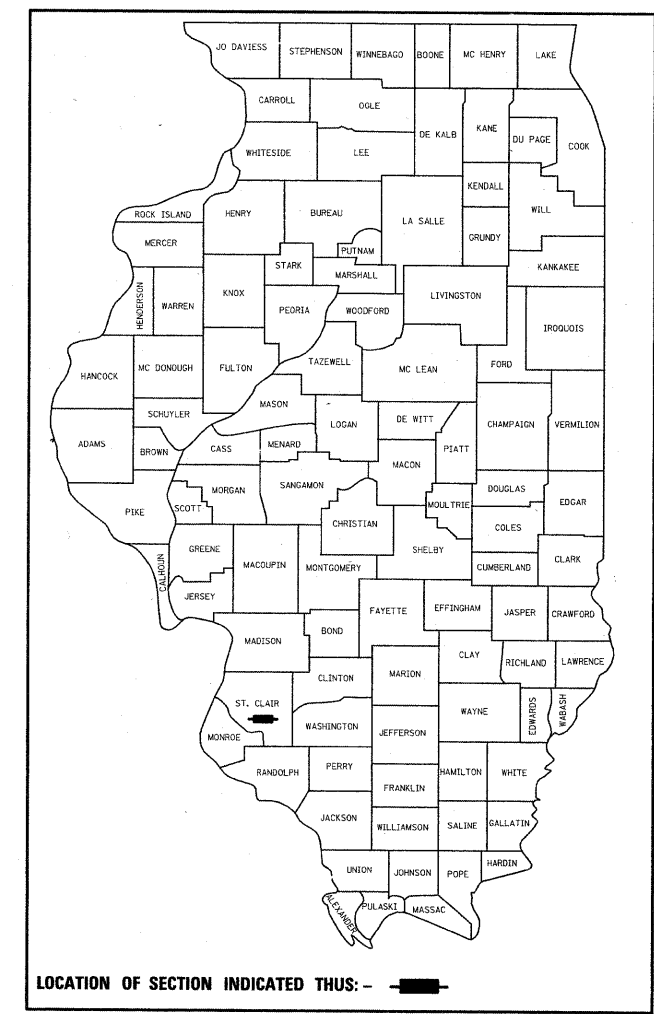
**PROPOSED  
HIGHWAY PLANS**

FAP ROUTE 799 (ILLINOIS AVE.)  
SECTION 1-1  
**CONCRETE BARRIER AND WATERPROOFING OVERLAY  
ST CLAIR COUNTY**

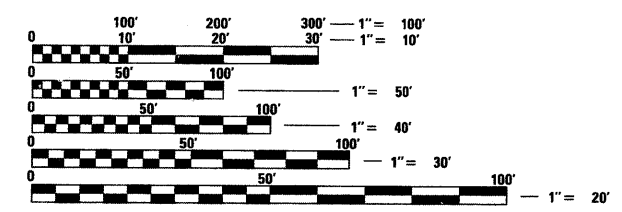
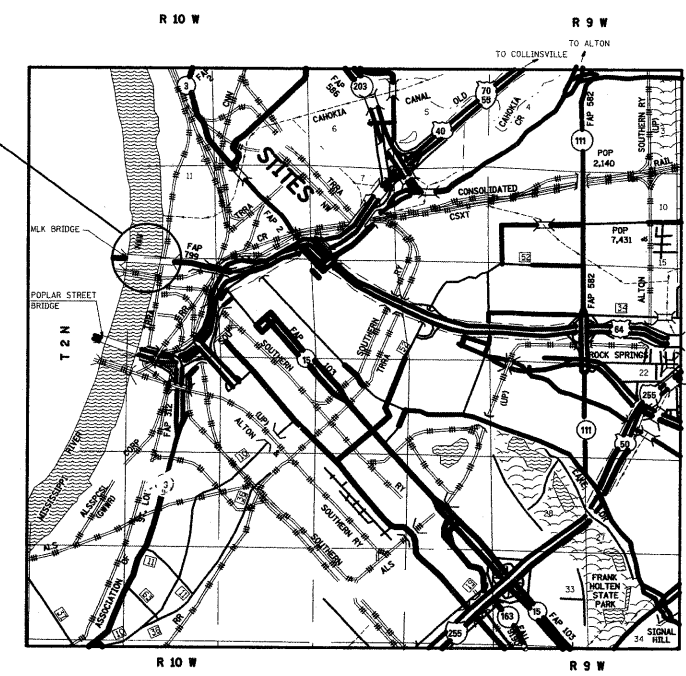
C-98-068-09

FOR INDEX OF SHEETS, SEE SHEET NO. 2

D-98-065-09



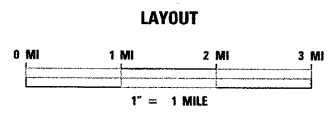
CONCRETE BARRIER  
ON MLK BRIDGE  
OVER MISSISSIPPI RIVER  
SN 082-6001  
4010'-3 3/4" F TO F OF ABUT.  
STA 20+00.00



FULL SIZE PLANS HAVE BEEN PREPARED USING STANDARD ENGINEERING SCALES. REDUCED SIZED PLANS WILL NOT CONFORM TO STANDARD SCALES. IN MAKING MEASUREMENTS ON REDUCED PLANS, THE ABOVE SCALES MAY BE USED.

TRAFFIC DATA  
ADT: 29000 (2009)  
29600 (2029)  
SU: 4.0%  
MU: 6.6%

J.U.L.I.E.  
JOINT UTILITY LOCATION INFORMATION FOR EXCAVATION  
1-800-892-0123  
OR 811



GROSS LENGTH = 5,882.5 FT. = 1.114 MILES  
NET LENGTH = 5,882.5 FT. = 1.114 MILES

PROJECT ENGINEER: PATTI LEBEAU (618) 346-3179  
PROJECT MANAGER: ART MUEHLFELD (618) 346-3209

CONTRACT NO. 76D14

LATITUDE: 38.6305 LONGITUDE: 90.1747

STATE OF ILLINOIS  
DEPARTMENT OF TRANSPORTATION  
DIVISION OF HIGHWAYS

SUBMITTED May 28 2009  
Max Kramer  
DEPUTY DIRECTOR OF HIGHWAYS, REGION 5 ENGINEER

June 26 2009  
Charles J. Ingersoll  
ENGINEER OF DESIGN AND ENVIRONMENT

June 26 2009  
Christine M. Reed  
DIRECTOR OF HIGHWAYS, CHIEF ENGINEER

**PRINTED BY THE AUTHORITY  
OF THE STATE OF ILLINOIS**