

F.A.P. RTE.	SECTION	COUNTY	TOTAL SHEETS	SHEET NO.
799	1-1	ST CLAIR	15	1
ILLINOIS			CONTRACT NO. 76D14	

STATE OF ILLINOIS
DEPARTMENT OF TRANSPORTATION
DIVISION OF HIGHWAYS

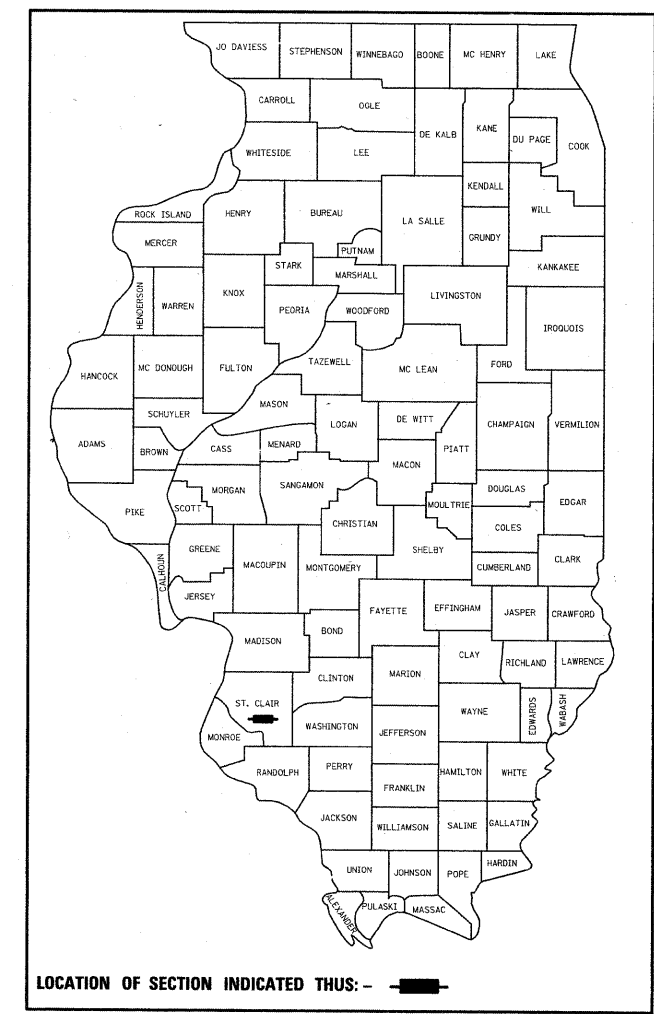
**PROPOSED
HIGHWAY PLANS**

FAP ROUTE 799 (ILLINOIS AVE.)
SECTION 1-1
**CONCRETE BARRIER AND WATERPROOFING OVERLAY
ST CLAIR COUNTY**

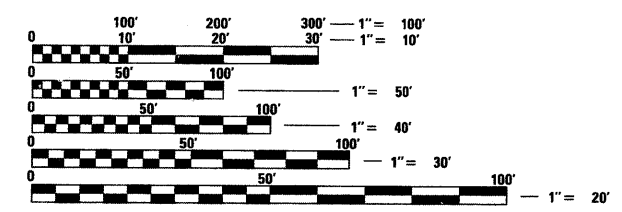
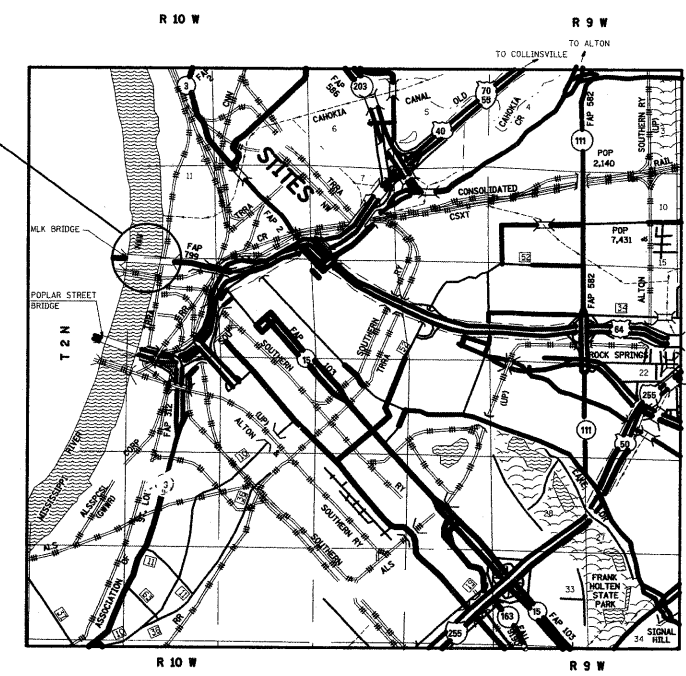
C-98-068-09

FOR INDEX OF SHEETS, SEE SHEET NO. 2

D-98-065-09



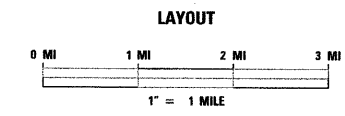
CONCRETE BARRIER
ON MLK BRIDGE
OVER MISSISSIPPI RIVER
SN 082-6001
4010'-3 3/4" F TO F OF ABUT.
STA 20+00.00



FULL SIZE PLANS HAVE BEEN PREPARED USING STANDARD ENGINEERING SCALES. REDUCED SIZED PLANS WILL NOT CONFORM TO STANDARD SCALES. IN MAKING MEASUREMENTS ON REDUCED PLANS, THE ABOVE SCALES MAY BE USED.

J.U.L.I.E.
JOINT UTILITY LOCATION INFORMATION FOR EXCAVATION
1-800-892-0123
OR 811

TRAFFIC DATA
ADT: 29000 (2009)
29600 (2029)
SU: 4.0%
MU: 6.6%



GROSS LENGTH = 5,882.5 FT. = 1.114 MILES
NET LENGTH = 5,882.5 FT. = 1.114 MILES

PROJECT ENGINEER: PATTI LEBEAU (618) 346-3179
PROJECT MANAGER: ART MUEHLFELD (618) 346-3209

CONTRACT NO. 76D14

LATITUDE: 38.6305 LONGITUDE: 90.1747

STATE OF ILLINOIS
DEPARTMENT OF TRANSPORTATION
DIVISION OF HIGHWAYS

SUBMITTED May 28 2009
Max Kramer
DEPUTY DIRECTOR OF HIGHWAYS, REGION 5 ENGINEER

June 26 2009
Charles J. Ingersoll
ENGINEER OF DESIGN AND ENVIRONMENT

June 26 2009
Christine M. Reed
DIRECTOR OF HIGHWAYS, CHIEF ENGINEER

**PRINTED BY THE AUTHORITY
OF THE STATE OF ILLINOIS**

INDEX OF SHEETS

- 1. COVER SHEET
- 2. INDEX OF SHEETS, HIGHWAY STANDARDS, GENERAL NOTES, AND COMMITMENTS
- 3. SUMMARY OF QUANTITIES
- 4. SCHEDULE OF QUANTITIES
- 5. GENERAL PLAN AND ELEVATION
- 6. STEEL GRID FLOOR - SPAN 10
- 7 - 9. MLK CLOSURE PLAN
- 10. - 11. CONCRETE SAFETY BARRIER
- 12. BARRIER DETAIL AT EXPANSION JOINTS
- 13. MISCELLANEOUS DETAILS
- 14 - 15. PAVEMENT MARKING

STANDARDS

- 000001-05
- 001001-02
- 001006
- 630001-08
- 631033-03
- 701400-03
- 701451
- 704001-05
- 780001-02
- 781001-03

COMMITMENTS

AS PART OF DEVELOPING THIS PROJECT THESE COMMITMENTS WERE MADE:

- 1. INSTALLATION OF 6" PREFORMED PLASTIC TY B PAVEMENT MARKING TAPE - GROOVED IN.
- 2. INSTALL SPEED REDUCTION PAVEMENT MARKING
- 3. INSTALL PARAPET AND BARRIER DELINEATION - LDS STRIPE.
- 4. REMOVE AND REPLACE WITH NEW STANDARD THE GUARDRAIL ON THE MLK DRIVE RAMPS.
- 5. REMOVE THE EXISTING NEW JERSEY BARRIER AND REACT 350 ON THE WEST END OF THE RR APPROACH AND DELIVER TO THE BOWMAN YARD.
- 6. INCLUDE AN ADDITIONAL 10-15% OF THE CONCRETE SAFETY BARRIER FOR IMMEDIATE REPAIR NEEDS TO THE SYSTEM.

GENERAL NOTES

- 1. THE STANDARDS AND REVISION NUMBERS SHALL APPLY TO THIS PROJECT.
- 2. THE CONTRACTOR SHALL VERIFY ALL DIMENSIONS AND CONDITIONS IN THE FIELD PRIOR TO CONSTRUCTION AND ORDERING MATERIALS.
- 3. ILLINOIS STATE LAW REQUIRES A 48-HOUR NOTICE BE GIVEN TO UTILITIES WITHIN THE PROJECT AREA BEFORE DIGGING BY CALLING J.U.L.I.E. AND BY NOTIFYING NON-J.U.L.I.E. MEMBERS INDIVIDUALLY. AGENCIES KNOWN TO HAVE FACILITIES WITHIN THE PROJECT AREA ARE AS FOLLOWS:
 - AMERENIP
 - AMERENUE
 - AT&T ILLINOIS
 - EXPLORER PIPELINE COMPANY
 - ILLINOIS AMERICAN WATER COMPANY
 - LACLEDE PIPELINE COMPANY
 - LEVEL 3 COMMUNICATIONS, LLC
 - LIGHTCORE
 - MCI NETWORK SERVICES, INC
 - PAETEC/MCLEOD USA TELECOMMUNICATIONS, INC.
 - QUEST SOLUTIONS CENTER
 - SPRINT/NEXTEL

MEMBERS OF J.U.L.I.E (800) 892-0123 ARE INDICATED BY *. NON-MEMBERS MUST BE NOTIFIED INDIVIDUALLY.

- 4. PLAN DIMENSIONS AND DETAILS RELATIVE TO EXISTING STRUCTURE AND ROADWAY HAVE BEEN TAKEN FROM EXISTING PLANS AND ARE SUBJECT TO NOMINAL CONSTRUCTION VARIATIONS. IT SHALL BE THE CONTRACTOR RESPONSIBILITY TO VERIFY SUCH DIMENSIONS AND DETAILS IN THE FIELD AND MAKE NECESSARY APPROVED ADJUSTMENTS PRIOR TO CONSTRUCTION OR ORDERING OF MATERIALS. SUCH VARIATIONS SHALL NOT BE CAUSE FOR ADDITIONAL COMPENSATION FOR A CHANGE IN THE SCOPE OF WORK. HOWEVER, THE CONTRACTOR WILL BE PAID FOR THE QUANTITY ACTUALLY FURNISHED AT THE UNIT PRICE BID FOR THE WORK.
- 5. THE CONTRACTOR SHALL FURNISH AND INSTALL WOOD SIGN SUPPORTS IN ACCORDANCE WITH SECTION 730 OF THE STANDARD SPECIFICATIONS, HOWEVER, INSTALLATION BY METHOD "A" (ARTICLE 730.04(A)) SHALL BE THE ONLY METHOD PERMITTED.
- 6. EXTRA CARE SHALL BE REQUIRED TO REMOVE EXISTING OVERLAY AROUND THE DECK DRAINS AND EXPANSION JOINTS. OVERLAY WITH IN ONE (1) FOOT OF THE DECK DRAINS AND EXPANSION JOINTS SHALL BE REMOVED BY HAND AS DIRECTED BY THE ENGINEER.
- 7. THE FOLLOWING MIXTURE REQUIREMENTS ARE APPLICABLE FOR THIS CONTRACT:

MIXTURE USE	POLY-SURFACE
AC/PG	SBS PG 76-28
RAP % (MAX)	0%
DESIGN AIR VOIDS	3.5% @ Ndes=70
MIX COMPOSITION	
(GRADATION MIXTURE)	IL 9.5/12.5
FRICTION AGG	MIXTURE "D"

SUMMARY OF QUANTITIES

SUMMARY OF QUANTITIES			URBAN 90% FED. 10% STATE TOTAL	CONSTRUCTION TYPE CODE		
CODE NO	ITEM	UNIT	QUANTITIES	SFTY-2A		
40603540	POLYMERIZED HOT-MIX ASPHALT SURFACE COURSE, MIX "D", N70	TON	315	315		
44000915	HOT-MIX ASPHALT SURFACE REMOVAL (DECK)	SQ YD	3213	3213		
44001980	CONCRETE BARRIER REMOVAL	FOOT	69	69		
58100200	WATERPROOFING MEMBRANE SYSTEM	SQ YD	3213	3213		
63000001	STEEL PLATE BEAM GUARD RAIL, TYPE A, 6 FOOT POSTS	FOOT	1325	1325		
63100089	TRAFFIC BARRIER TERMINAL, TYPE 6B	EACH	4	4		
63200310	GUARDRAIL REMOVAL	FOOT	1500	1500		
63500105	DELINEATORS	EACH	16	16		
67100100	MOBILIZATION	L SUM	1	1		
70100820	TRAFFIC CONTROL AND PROTECTION, STANDARD	L SUM	1	1		
70101700	TRAFFIC CONTROL AND PROTECTION 701451	L SUM	1	1		
70106800	CHANGEABLE MESSAGE SIGN	CAL MO	1	1		
70400100	TEMPORARY CONCRETE BARRIER	FOOT	1000	1000		
* 78003130	PREFORMED PLASTIC PAVEMENT MARKING, TYPE B - LINE 6"	FOOT	24797	24797		
* 78003140	PREFORMED PLASTIC PAVEMENT MARKING, TYPE B - LINE 8"	FOOT	2541	2541		
* 78003150	PREFORMED PLASTIC PAVEMENT MARKING, TYPE B - LINE 12"	FOOT	484	484		
* 78100100	RAISED REFLECTIVE PAVEMENT MARKER	EACH	44	44		
* 78100105	RAISED REFLECTIVE PAVEMENT MARKER (BRIDGE)	EACH	50	50		
78200410	GUARDRAIL MARKERS, TYPE A	EACH	20	20		
78300100	PAVEMENT MARKING REMOVAL	SQ FT	6864	6864		
78300200	RAISED REFLECTIVE PAVEMENT MARKER REMOVAL	EACH	252	252		
X0323644	PAVEMENT MARKING GROOVING	FOOT	27590	27590		
Z0029999	IMPACT ATTENUATOR REMOVAL	EACH	1	1		
Z0030250	IMPACT ATTENUATORS, TEMPORARY (NON-REDIRECTIVE), TEST LEVEL 3	EACH	2	2		
Z0030260	IMPACT ATTENUATORS, TEMPORARY (FULLY REDIRECTIVE, NARROW), TEST LEVEL 3	EACH	1	1		
X0326648	CONCRETE SAFETY BARRIER, SPECIAL	FOOT	6480	6480		
X0326649	LINEAR DELINEATOR PANELS, 6 INCH	EACH	3068	3068		
X0326650	FILLING EXISTING RUMBLE STRIP	FOOT	4532	4532		

FILE NAME =	USER NAME = gelnh	DESIGNED -	REVISED -	STATE OF ILLINOIS DEPARTMENT OF TRANSPORTATION	SUMMARY OF QUANTITIES	F.A.P. RTE.	SECTION	COUNTY	TOTAL SHEETS	SHEET NO.	
c:\pwork\pwidot\GELINH\d0141488\08760	*sht-500.dgn	DRAWN -	REVISED -			799	1-I	ST CLAIR	15	3	
	PLOT SCALE = 50.0000' / 1" IN.	CHECKED -	REVISED -			SCALE: _____ SHEET NO. ___ OF ___ SHEETS STA. _____ TO STA. _____					
	PLOT DATE = 5/28/2009	DATE -	REVISED -			CONTRACT NO. 76D14 FED. ROAD DIST. NO. - ILLINOIS FED. AID PROJECT					

Rev. **Specialty Items*

PAVEMENT MARKING SCHEDULE

STATION						PERFORMED PLASTIC PAVEMENT MKG TYPE B				PAVEMENT MARKING GROOVING (FT)	RAISED REFLECTIVE PVMT MKR (EA)	RAISED REFLECTIVE PVMT MKR (BRIDGE) (EA)					
						6" WHITE LINE (FT)	6" YELLOW LINE (FT)	8" YELLOW LINE (FT)	12" WHITE LINE TYPE B (FT)								
WEST BOUND																	
2+00.00	40.92'	LT	TO	53+47.00	26.88 FT	LT	EDGE LINE				5148.22						
12+00.00			TO	14+04.00			SPEED REDUCTION PVMT MKG				42.00	42.00					
35+55.50			TO	37+59.50			SPEED REDUCTION PVMT MKG				42.00	42.00					
42+45.00	9.2 FT	LT	TO	35+03.10	10.13 FT	LT	EDGE LINE @ ENTRANCE RAMP				741.90	741.90	5				
41+00.00	8.75 FT	RT	TO	35+03.10	9.0 FT	RT	EDGE LINE @ ENTRANCE RAMP					401.04	5				
41+00.00	8.75 FT	RT	TO	35+03.10	28.7 FT	RT	EDGE LINE @ ENTRANCE RAMP					396.90					
2+00.00	7.00'	LT	TO	60+82.70	12.0 FT	LT	EDGE LINE					5883.91					
EAST BOUND																	
2+00.00	5.75'	RT	TO	60+82.70	7.5 FT	LT	EDGE LINE					5884.69					
2+00.00	18.50	RT	TO	3+28.07	7.5 FT	RT	EB CENTER LINE						2				
2+00.00		RT	TO	52+00.00	3.9 FT	RT	SKIP DASH				1259.80						
3+28.00	7.5 FT	RT	TO	43+48.75	7.5 FT	RT							50				
5+96.00			TO	8+00.00			SPEED REDUCTION PVMT MKG					84.00	84.00				
28+96.00			TO	29+00.00			SPEED REDUCTION PVMT MKG					84.00	84.00				
43+38.39	7.5 FT	RT	TO	52+00.00	3.9 FT	RT	EB CENTER LINE						11				
52+00.00	3.9 FT	RT	TO	60+82.70	7.9 FT	RT	EDGE LINE @ EXIT RAMP					866.31	866.31				
55+20.00	7.5 FT	RT	TO	58+63.5	16.5 FT	RT	CHEVRON					231.66					
52+00.00	3.9 FT	RT	TO	60+82.70	33.5 FT	RT	EDGE LINE @ EXIT RAMP					876.55	876.55				
2+00.00		RT	TO	52+28.00	16.75 FT	RT	EDGE LINE				5035.87		5035.87				
0+00.00	8.3 FT	LT	TO	8+42.20	6.0 FT	LT	EDGE LINE @ EXIT RAMP				842.2		842.20				
SUB-TOTAL											13027.99	11768.60	2540.80	483.66	27589.39	44	50
TOTAL											24796.59	2540.80	483.66	27589.39	44	50	

TEMPORARY BARRIER SCHEDULE

LOCATION				TEMPORARY CONCRETE BARRIER (FT)	IMPACT ATTEN., TEMP. (NON RED.), TEST LEVEL 3 (EA)	IMPACT ATTEN., TEMP. (NON RED., NARROW.), TEST LEVEL 3 (EA)
36+32.50	TO	38+56.00	RT WB MLK APPR.	425		
38+56.00			RT WB MLK APPR.		1	
36+53.00	TO	38+57.50	LT RAMP 2	312.5		
38+57.50			LT RAMP 2		1	
I-70 EB MISSOURI						1
TOTAL				1000	2	1

RESURFACING SCHEDULE

STATION			RT/LT	POLYMERIZED HMA SURF. CSE., MIX "D", N70 (TON)	WATER PROOFING MEMBRANE SYSTEM (SQ YD)	FILLING EXISTING RUMBLE STRIP (FT)
2+11.50	TO	15+90.42				1378.9
15+90.42	TO	23+13.25	RT/LT	314.83	3212.58	
23+13.25	TO	54+65.99				3152.7
TOTAL				314.83	3212.58	4531.66

CONCRETE BARRIER SCHEDULE

LOCATION		CONCRETE SAFETY BARRIER, SPECIAL (FT)	LINEAR DELINEATION PANELS, 6 IN (EA)
2+00.00	TO 60+19.75	5880.00	2352
ADD 10.31%		600.00	
2+00.00	TO 10+00.00	CONCRETE PARAPET, MO SIDE	
29+00.00	TO 43+38.50	CONCRETE PARAPET, IL SIDE	
TOTAL		6480.00	3068

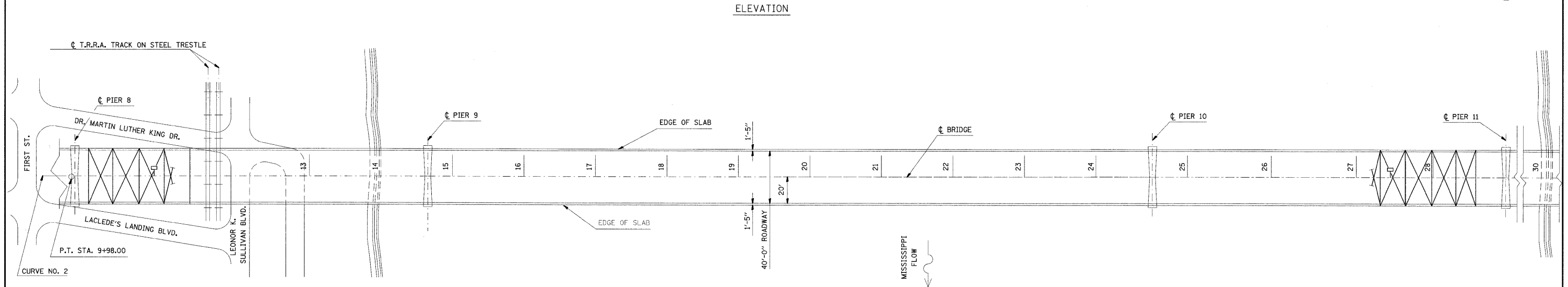
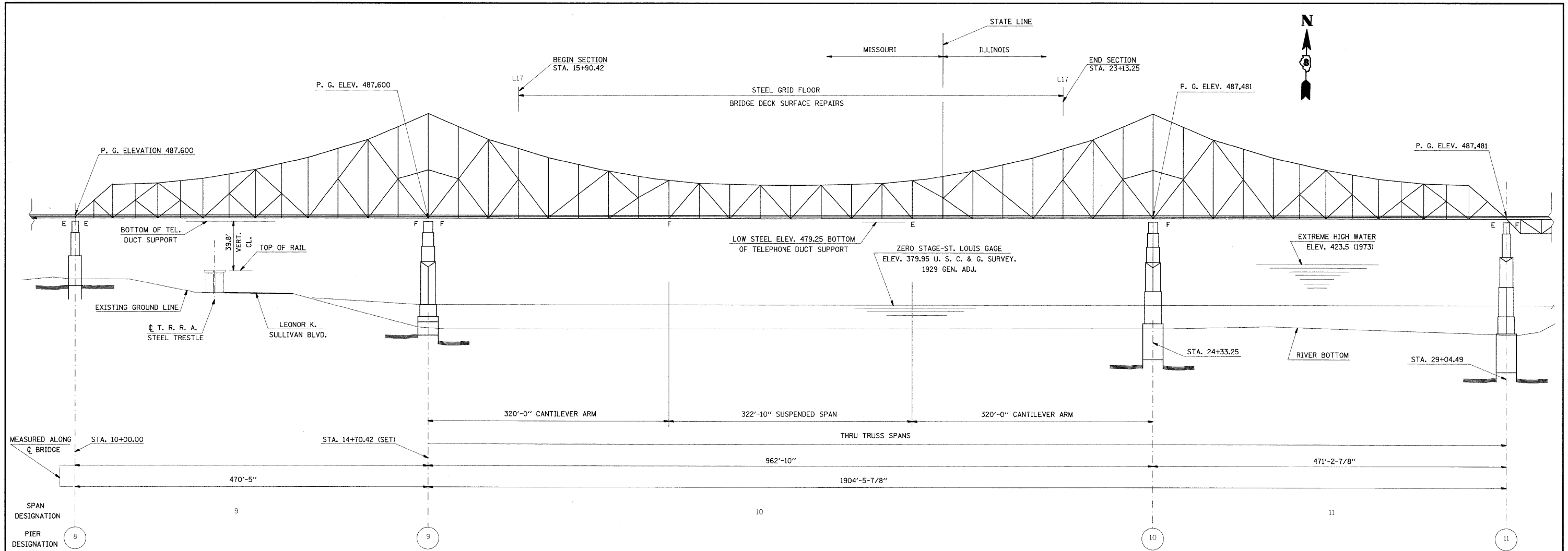
GUARDRAIL SCHEDULE

LOCATION		STEEL PL BEAM GUARDRAIL T-A, 6' POSTS (FT)	TRAFFIC BARRIER TYPE 6B (EA)	GUARDRAIL MARKERS TYPE A (EA)	DELINEATORS (EA)
MLK DRIVE	RAMP B	912.5	2	13	10
MLK DRIVE	RAMP B	100		2	2
MLK DRIVE	RAMP C	312.5	2	5	4
TOTAL		1325	4	20	16

REMOVAL SCHEDULE

STATION			PAVEMENT MARKING REMOVAL (SQ FT)	RAISED REFL. PVMT. MKR REMOVAL (EA)	BITUMINOUS CONCRETE REMOVAL (DECK) (SQ YD)	IMPACT ATTENUATOR REMOVAL (EA)	CONCRETE BARRIER REMOVAL (FT)	GUARDRAIL REMOVAL (FT)
2+00.00	TO	15+90.42	EB & WB EDGE LINE	463.5				
2+00.00	TO	15+90.42	EB & WB CL	231.7	35			
2+00.00	TO	15+90.42	CENT. LINE	926.9	35			
15+90.42	TO	23+13.25	STEEL GRID FLOOR		3212.6			
23+13.25	TO	52+28.00	EB EDGE LINE	971.6				
0+00.00	TO	8+41.00	EB EDGE LINE	280.3				
23+13.25	TO	54+00.00	EB CENT LINE	257.2	39			
54+00.00	TO	58+60.00	EB GORE	669.9	12			
23+13.25	TO	59+85.00	CENT. LINE	2447.8	92			
23+13.25	TO	55+68.50	WB CENT LINE	271.3	41			
55+68.50	TO	60+82.70	WB GORE	342.8				
60+00.00						1	69	
MLK DRIVE			RAMPS B & C					
SUB-TOTAL								1500
TOTAL				6863.1	252	3212.6	1*	69*

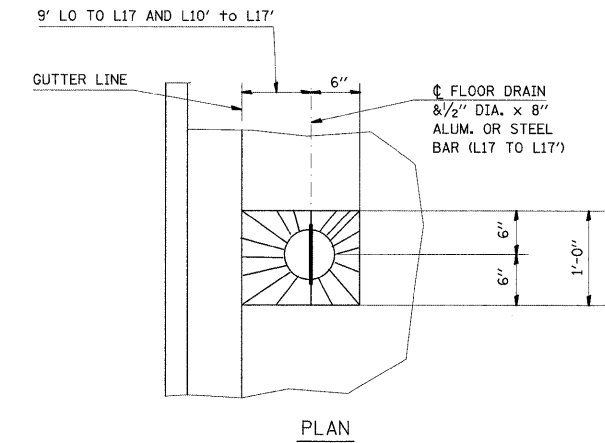
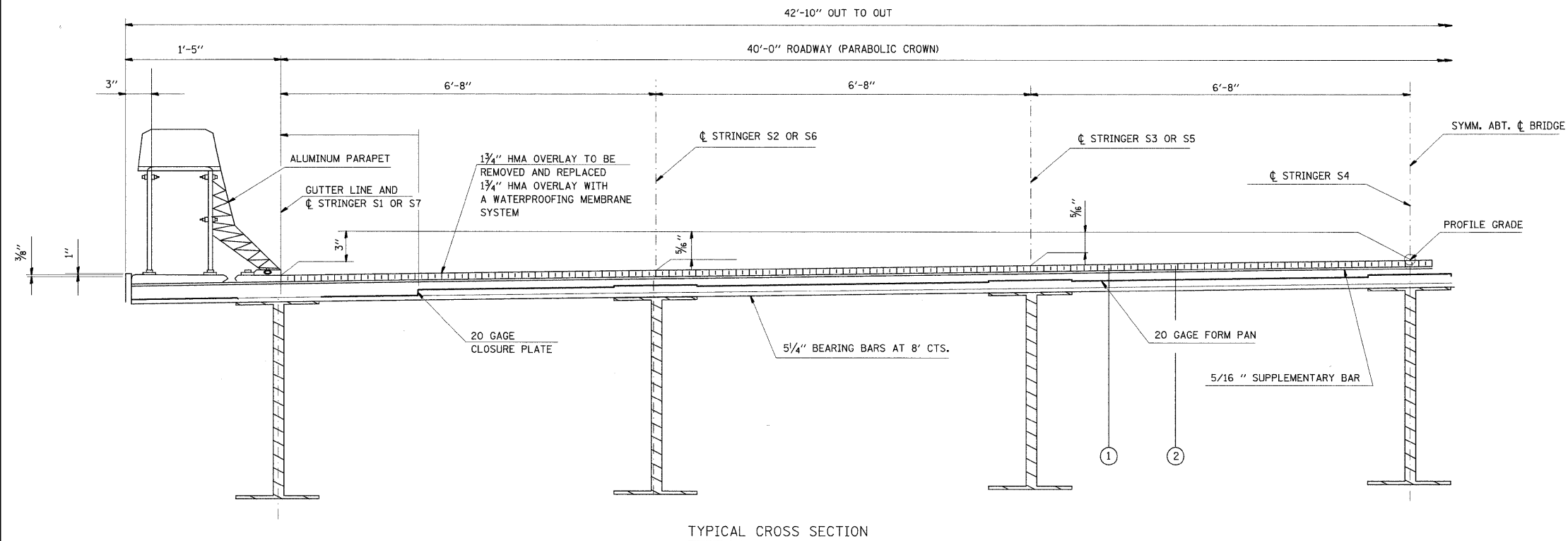
*SEE COMMITMENTS



BENCHMARKS (FOR INFORMATION ONLY)

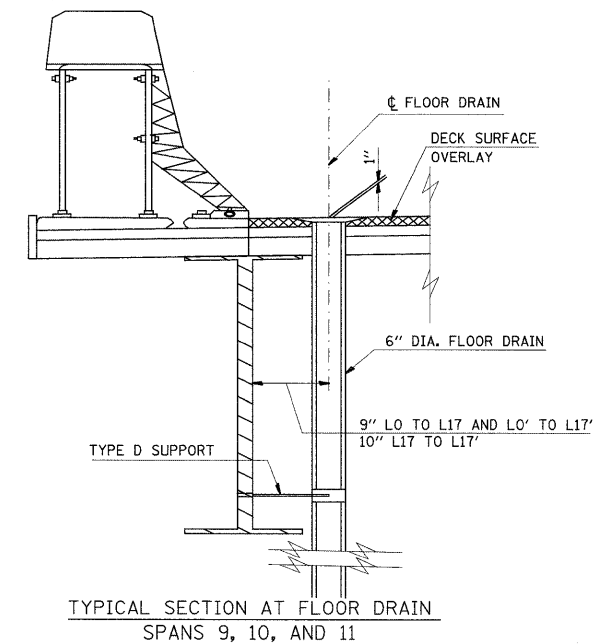
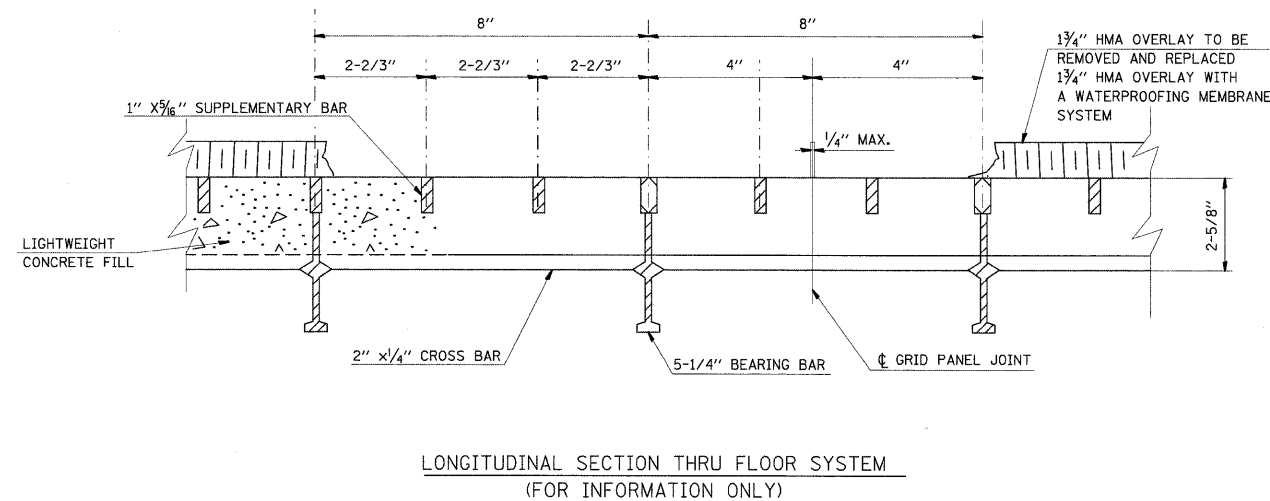
- B.M. 1 CHISELED "X" ON N.E. CORNER ON NORTH FOUNDATION OF BENT Y AT THE S.W. CORNER OF DR. M. L. KING DRIVE & SECOND STREET 97' RT. STA. 1+14 ELEVATION = 456.83
- B.M. 2 CHISELED "X" ON N.W. CORNER ON NORTH FOUNDATION OF BENT 6 AT THE N.E. CORNER OF DR. M. L. KING DRIVE & FIRST STREET 17' LT. STA. 9+03 ELEVATION = 443.36
- B.M. 3 CHISELED SQUARE ON TOP OF P.C.C. CURB ON SOUTH SIDE OF LACLEDE'S LANDING BLVD. NEAR THIRD STREET 21' RT. STA. 9+99 ELEVATION = 483.52
- B.M. 4 CHISELED "4" ON TOP OF PEDESTAL ON SOUTH OF BRIDGE AT PIER 8
- B.M. 5 CHISELED "4" ON TOP OF GUSSET PLATE ON SOUTH SIDE OF BRIDGE ON NORTH GUSSET PLATE OF PIER 9 ON WEST SIDE OF VERTICAL 22' RT. STA. 14+67 ELEVATION = 489.20
- B.M. 6 CHISELED "4" ON TOP GUSSET PLATE ON SOUTH SIDE OF BRIDGE ON NORTH GUSSET PLATE OF PIER 10 ON EAST SIDE OF VERTICAL 22' RT. STA. 24+36 ELEVATION = 489.06
- B.M. 7 TOP OF NORTHEAST ANCHOR BOLT ON SOUTH END OF PIER 11 ON EAST SIDE OF PIER 22' RT. STA. 29+05 ELEVATION = 439.95
- B.M. 10 CHISELED SQUARE ON SOUTH END OF WINGWALL OF ABUTMENT B 26' RT. STA. 43+38 ELEVATION = 439.95

FILE NAME =	USER NAME = gelinh	DESIGNED -	REVISED -	STATE OF ILLINOIS DEPARTMENT OF TRANSPORTATION	GENERAL PLAN AND LAYOUT SPAN 9 - 11			F.A.P. RTE. 799	SECTION 1-1	COUNTY ST CLAIR	TOTAL SHEETS 15	SHEET NO. 5
CONTRACT NO. 76D14					SCALE: _____ SHEET NO. ____ OF ____ SHEETS STA. _____ TO STA. _____			ILLINOIS FED. AID PROJECT				
PLOT SCALE = 50,000' / IN.	DRAWN -	REVISD -	REVISD -									
PLOT DATE = 5/28/2009	CHECKED -	REVISD -	REVISD -									

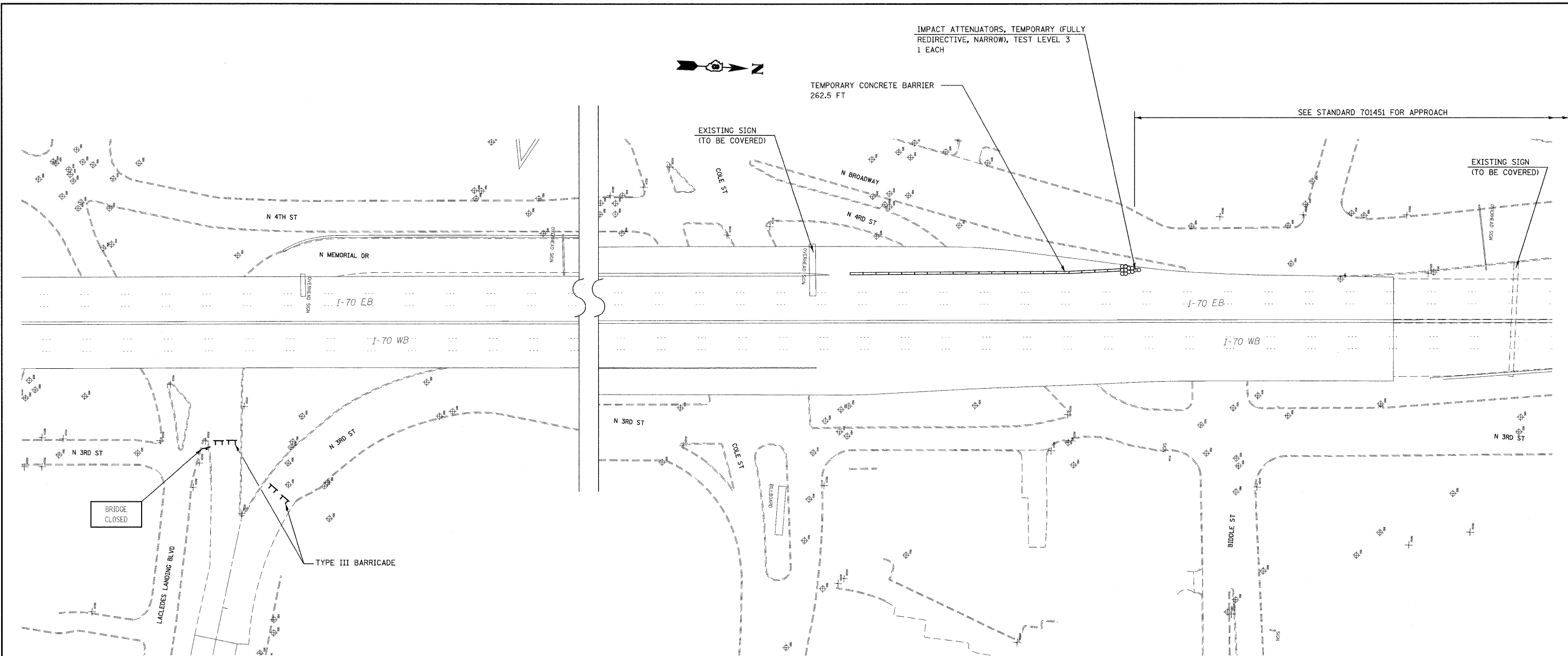


LEGEND

- ① PROPOSED BITUMINOUS CONCRETE REMOVAL (DECK), 1 3/4"
- ② PROPOSED POLYMERIZED BITUMINOUS CONCRETE SURFACE COURSE, SUPERPAVE, MIX D, N50 WITH WATERPROOFING MEMBRANE SYSTEM, 1 3/4" TOTAL DEPTH

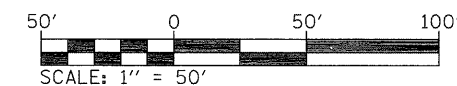


FILE NAME = c:\pw_work\pwwdot\gelinh\d0141408\087601	USER NAME = gelinh -sht-details.dgn	DESIGNED - DRAWN -	REVISED - REVISED -	STATE OF ILLINOIS DEPARTMENT OF TRANSPORTATION	STEEL GRID FLOOR SPAN 10 PANEL POINTS L17 THRU L17'	F.A.P. RTE. 799	SECTION 1-I	COUNTY ST CLAIR	TOTAL SHEETS 15	SHEET NO. 6	
PLOT SCALE = 50.0000' / IN.						SCALE: _____	SHEET NO. _____ OF _____ SHEETS	CONTRACT NO. 76D14		ILLINOIS FED. AID PROJECT	
PLOT DATE = 5/28/2009						DATE -	STA. _____ TO STA. _____				
						REVISOR -					



NOTES:

1. THE COST OF DRUMS, "BARRICADES, TYPE III", "BRIDGE CLOSED" SIGNS, AND COVERING ALL EXISTING SIGNS SHALL BE INCLUDED IN THE COST OF "TRAFFIC CONTROL AND PROTECTION"
2. A MINIMUM OF 3 CHANGEABLE MESSAGE SIGNS SHALL BE REQUIRED FOR THIS CONTRACT. ONE SHALL BE PLACED ON I-70 EB IN MISSOURI, ONE ON WB I-55/70/64, AND ONE ON WB 64.



FILE NAME =
c:\pwwork\NPWIDOT\GELINH\0141408\08760

USER NAME = gelinh
4-shr-closure.dgn
PLOT SCALE = 50.0000' / IN.
PLOT DATE = 6/22/2009

DESIGNED -
DRAWN -
CHECKED -
DATE -

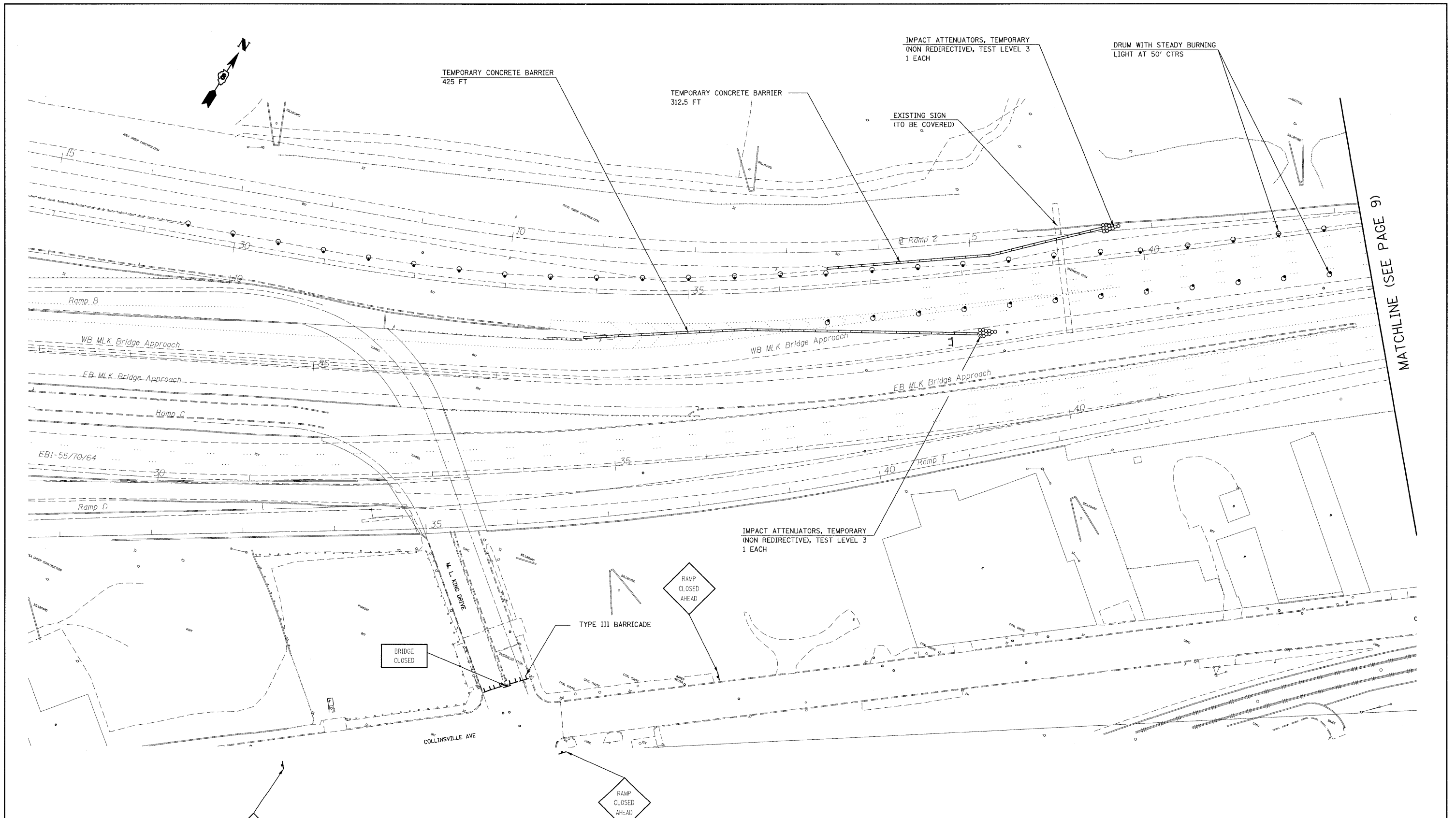
REVISED -
REVISED -
REVISED -
REVISED -

STATE OF ILLINOIS
DEPARTMENT OF TRANSPORTATION

MLK CLOSURE DETAILS

SCALE: _____ SHEET NO. ____ OF ____ SHEETS STA. _____ TO STA. _____

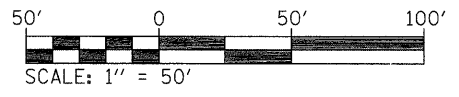
F.A.P. RTE.	SECTION	COUNTY	TOTAL SHEETS	SHEET NO.
799	1-1	ST CLAIR	15	7
CONTRACT NO. 76D14				
ILLINOIS FED. AID PROJECT				



MATCHLINE (SEE PAGE 9)

NOTES:

1. THE COST OF DRUMS, "BARRICADES, TYPE III", "BRIDGE CLOSED" SIGNS, AND COVERING ALL EXISTING SIGNS SHALL BE INCLUDED IN THE COST OF "TRAFFIC CONTROL AND PROTECTION"
2. A MINIMUM OF 3 CHANGEABLE MESSAGE SIGNS SHALL BE REQUIRED FOR THIS CONTRACT. ONE SHALL BE PLACED ON I-70 EB IN MISSOURI, ONE ON WB I-55/70/64, AND ONE ON WB 64.



FILE NAME =	USER NAME = gelink
c:\pw\work\PWIDOT\GELINK\0141428\0876D	4-shr-closure.dgn
PLOT SCALE = 50.0000' / IN.	
PLOT DATE = 6/22/2009	

DESIGNED -	---
DRAWN -	---
CHECKED -	---
DATE -	---

REVISED -	---
REVISED -	---
REVISED -	---
REVISED -	---

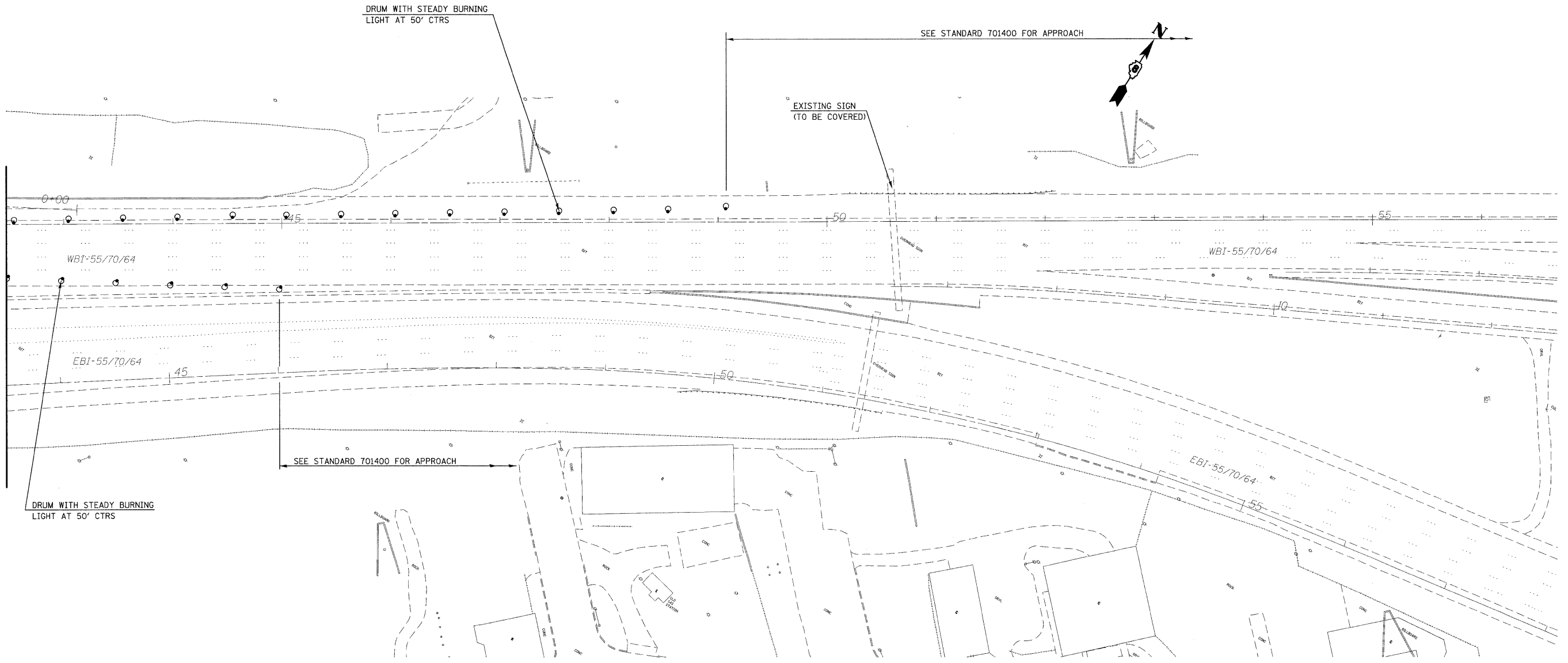
**STATE OF ILLINOIS
DEPARTMENT OF TRANSPORTATION**

MLK CLOSURE DETAILS

SCALE: _____ SHEET NO. ___ OF ___ SHEETS STA. _____ TO STA. _____

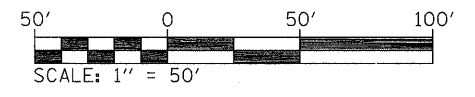
F.A.P. RTE.	SECTION	COUNTY	TOTAL SHEETS	SHEET NO.
799	1-1	ST CLAIR	15	8
CONTRACT NO. 76D14				
ILLINOIS FED. AID PROJECT				

MATCHLINE (SEE PAGE 8)



NOTES:

1. THE COST OF DRUMS, "BARRICADES, TYPE III", "BRIDGE CLOSED" SIGNS, AND COVERING ALL EXISTING SIGNS SHALL BE INCLUDED IN THE COST OF "TRAFFIC CONTROL AND PROTECTION"
2. A MINIMUM OF 3 CHANGEABLE MESSAGE SIGNS SHALL BE REQUIRED FOR THIS CONTRACT. ONE SHALL BE PLACED ON I-70 EB IN MISSOURI, ONE ON WB I-55/70/64, AND ONE ON WB 64.



FILE NAME =
 c:\pw\work\VPWIDOT\GELINH\0141408\0876D

USER NAME = gelinh
 4-shr-closure.dgn
 PLOT SCALE = 50.0000' / IN.
 PLOT DATE = 5/28/2009

DESIGNED - ---
 DRAWN - ---
 CHECKED - ---
 DATE - ---

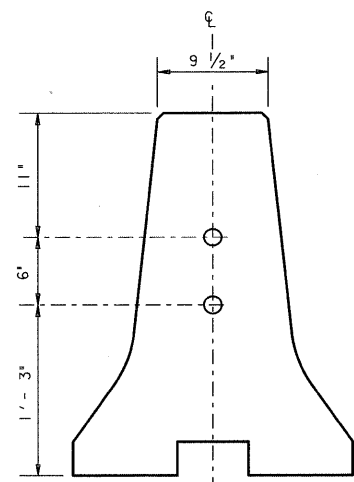
REVISED - ---
 REVISED - ---
 REVISED - ---
 REVISED - ---

**STATE OF ILLINOIS
 DEPARTMENT OF TRANSPORTATION**

MLK CLOSURE DETAILS

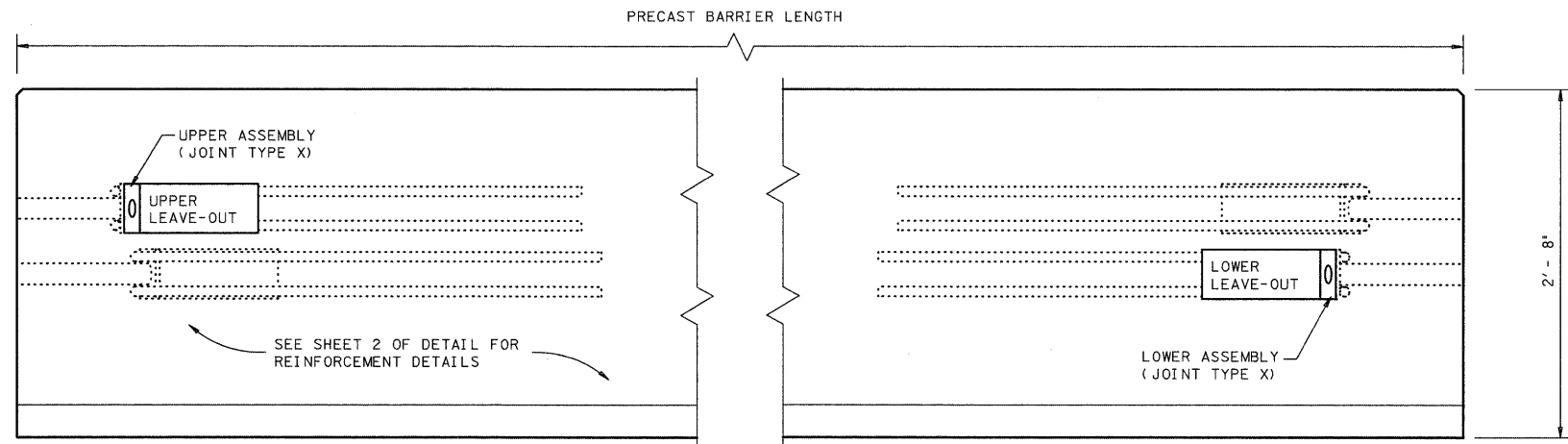
SCALE: _____ SHEET NO. ____ OF ____ SHEETS STA. _____ TO STA. _____

F.A.P. RTE.	SECTION	COUNTY	TOTAL SHEETS	SHEET NO.
799	I-I	ST CLAIR	15	9
CONTRACT NO. 76D14				
ILLINOIS FED. AID PROJECT				



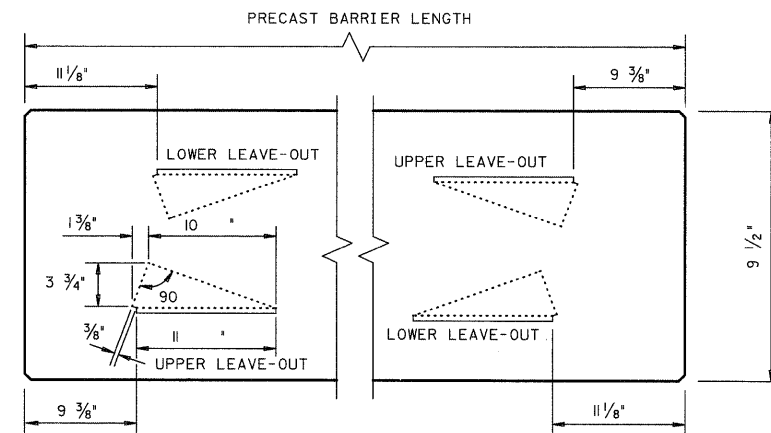
**PRECAST BARRIER
END VIEW**

NOTE:
THE PIPE ASSEMBLY LOCATIONS ARE
VERY IMPORTANT TO PROPERLY CONNECTING
THE BARRIER SEGMENTS.



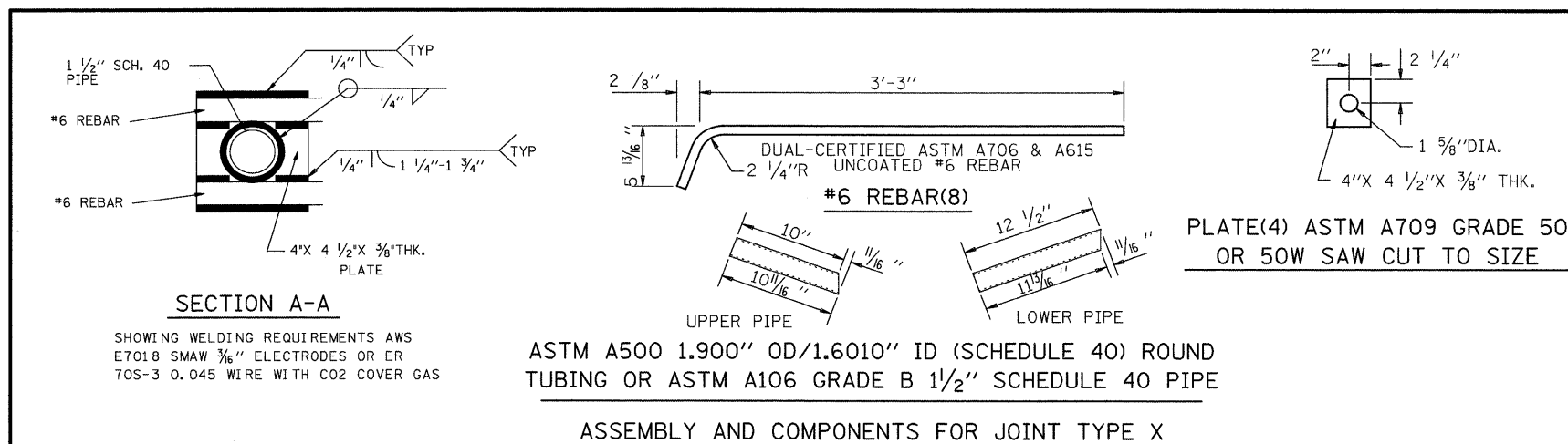
PRECAST BARRIER ELEVATION VIEW
SEE SHEET 2 OF DETAIL FOR REINFORCEMENT DETAILS

NOTE:
THE TYPE X CONNECTION IS A NON-PROPRIETARY
BARRIER CONNECTION SYSTEM.



TOP VIEW OF SIDE LEAVE OUTS

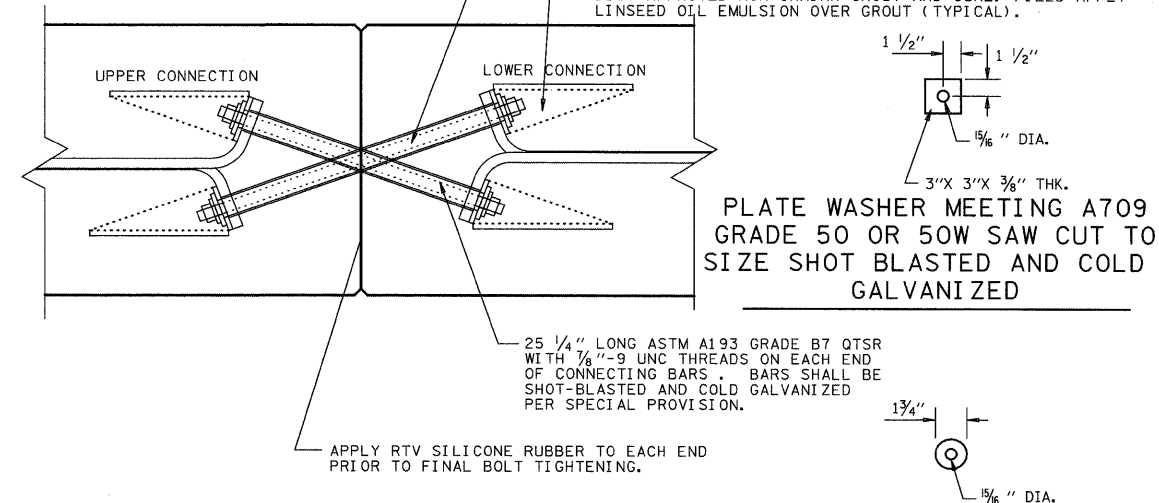
CONCRETE SURFACE OF LEAVE OUTS SHALL BE SAND-BLASTED
TO PROVIDE AN APPROPRIATE BONDING SURFACE FOR THE GROUT.
PROTECT GALVANIZED SURFACES DURING SAND-BLASTING.



ASSEMBLY AND COMPONENTS FOR JOINT TYPE X

29" LONG ASTM A193 GRADE B7 QTSR WITH 7/8" - 9
UNC THREADS ON EACH END OF CONNECTING BARS.
BARS SHALL BE SHOT-BLASTED AND COLD GALVANIZED
PER SPECIAL PROVISION.

TORQUE THE HARDENED ASTM A563 GRADE D OR DH HEAVY
HEX NUTS, GALVANIZED TO ASTM B695 CLASS 55, TO 50-70
FT-LBS. ROUND HARDENED STEEL WASHERS MEETING
ASTM F436 GALVANIZED TO ASTM B695 CLASS 55, SHALL BE
PLACED BETWEEN THE COLD GALVANIZED 3" X 3" X 3/8"
PLATE WASHER AND THE NUT. FIELD CLEAN THREADS BY
STIFF BRUSH. FIELD APPLY TWO COATS BY SWAB OF COLD
GALVANIZING COMPOUND MEETING MIL-P-46105 OR
DOD-P-21035 TO THE EXPOSED THREADS AFTER NUTS ARE
TORQUED. ALLOW GALVANIZING TO CURE. FIELD APPLY AN
IDOT APPROVED NON-SHRINK GROUT AND CURE. FIELD APPLY
LINSEED OIL EMULSION OVER GROUT (TYPICAL).

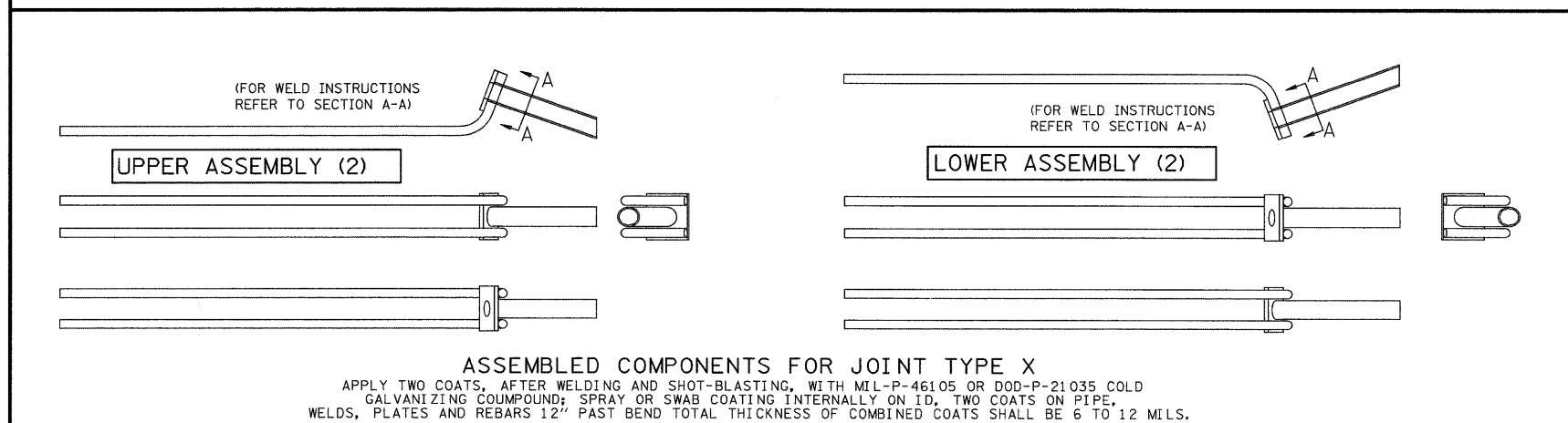


**TOP VIEW SHOWING
JOINT CONNECTION TYPE X**

**ROUND STEEL WASHER HARDENED
ASTM F436 GALVANIZED TO
ASTM B695 CLASS 55**

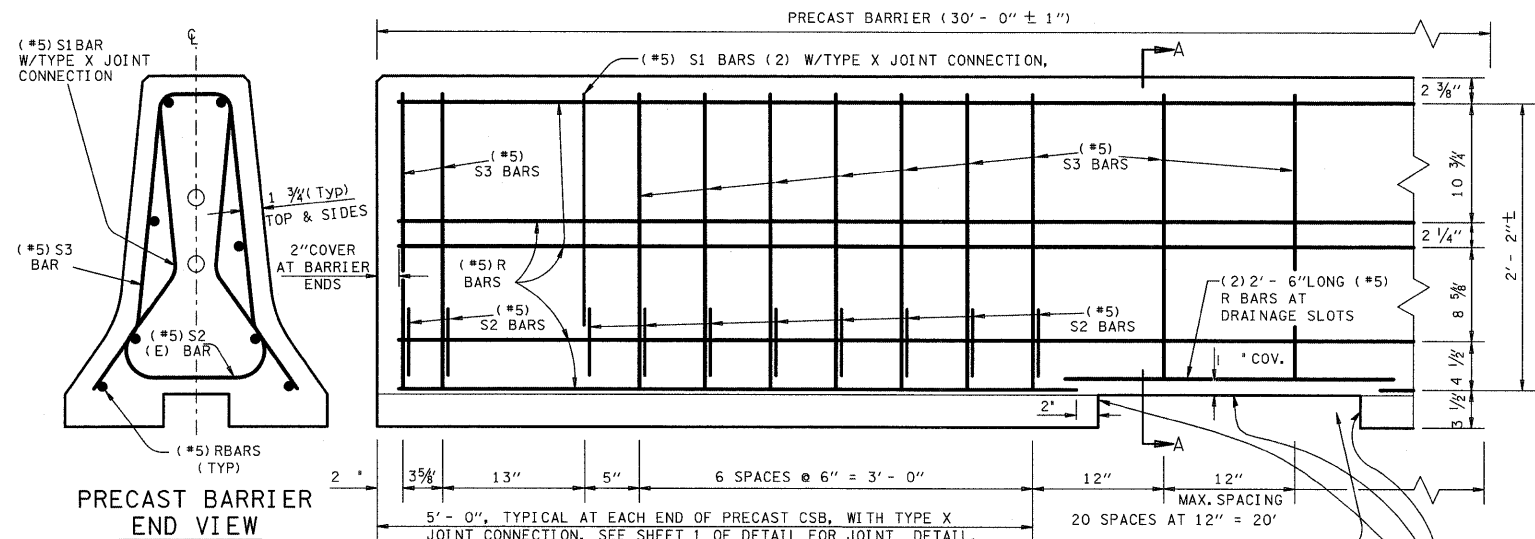
GENERAL NOTES

- CONCRETE SHALL BE A MODIFIED CLASS PC PER THE SPECIAL PROVISIONS ENTITLED "CONCRETE SAFETY BARRIER, SPECIAL".
- WHERE USED, REBAR REINFORCEMENT SHALL BE GRADE 60 AND CONFORM TO DUAL CERTIFICATION TO ASTM A615 AND A706.
- PRECAST BARRIER LENGTH SHALL BE 30 FT. UNLESS OTHERWISE SPECIFIED ON THE PLANS.
- ALL CONCRETE, REINFORCEMENT, JOINT CONNECTION SYSTEMS, GROUT, AND ETC. AS SHOWN ARE CONSIDERED AS PART OF THE BARRIER FOR PAYMENT.
- BOTTOM TROUGH AND DRAINAGE SLOTS SHALL BE AS DETAILED.
- REGARDLESS OF THE METHOD OF HANDLING, BARRIER SECTION LIFTING POINTS SHALL BE 6 ± 1/4 FEET FROM THE ENDS OF THE BARRIER. LIFTING DEVICES AND ATTACHMENTS TO BARRIER SECTIONS SHALL BE AS APPROVED BY THE ENGINEER.
- SURFACE FINISHING SHALL BE TWO PARTS SAND ONE PART CEMENT WITH ENOUGH WATER TO MAKE THE MIXTURE PLASTIC. GROUTING SHALL BE DONE IN A MANNER THAT WILL ASSURE A SMOOTH SURFACE. SURFACE FINISHING SHALL BE CONSIDERED SUBSIDIARY TO THE VARIOUS BID ITEMS INVOLVED.
- ALL STEEL FITTINGS AND HARDWARE FOR JOINT TYPE X BARRIER SHALL BE GALVANIZED AS DETAILED IN THE CONTRACT SPECIAL PROVISIONS.



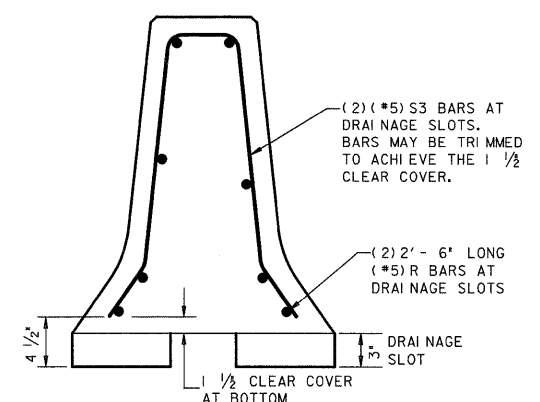
JOINT CONNECTION (TYPE X)

FILE NAME = #FILE#	USER NAME = #USER#	DESIGNED -	REVISED -	STATE OF ILLINOIS DEPARTMENT OF TRANSPORTATION	CONCRETE SAFETY BARRIER SPECIAL	F.A.P. RTE. 799	SECTION 1-I	COUNTY ST CLAIR	TOTAL SHEETS 15	SHEET NO. 10			
	PLOT SCALE = #SCALE#	DRAWN -	REVISED -			SCALE:	SHEET NO. 1 OF 2 SHEETS	STA.	TO STA.	CONTRACT NO. 76D14			
	PLOT DATE = #DATE#	CHECKED -	REVISED -			ILLINOIS FED. AID PROJECT							
		DATE -	REVISED -										

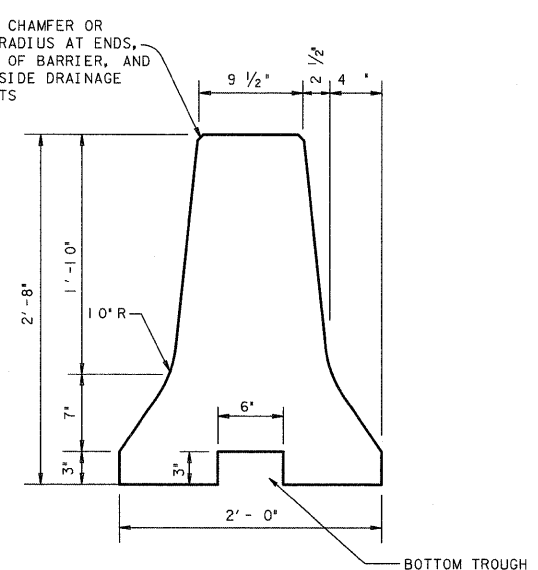


PRECAST BARRIER END VIEW
SEE SHEET 1 OF DETAIL FOR JOINT CONNECTION TYPES

REINFORCEMENT FOR PRECAST CONCRETE SAFETY BARRIER
SHOWING REINFORCEMENT FOR JOINT TYPE X, SEE SHEET 1 OF DETAIL FOR JOINT TYPES AND CONNECTION DETAILS.
PRECAST BARRIER REINFORCEMENT IS SYMMETRICAL FROM CENTER LENGTH OF BARRIER.

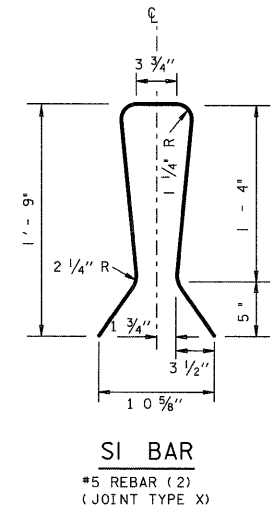


Section A-A
STEEL PLACEMENT AT DRAINAGE SLOT

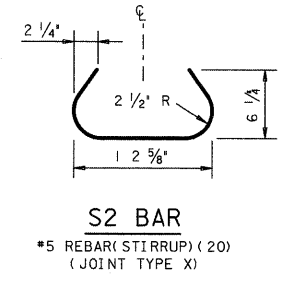


CONCRETE SAFETY BARRIER

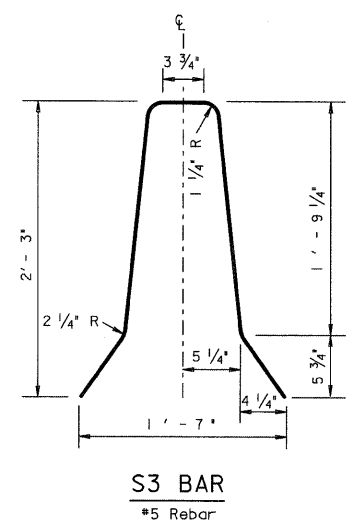
PROVIDE BOTTOM TROUGH FULL LENGTH OF BARRIER



SI BAR
#5 REBAR (2) (JOINT TYPE X)



S2 BAR
#5 REBAR (STIRRUP) (20) (JOINT TYPE X)



S3 BAR
#5 Rebar

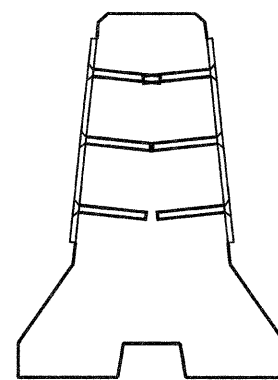
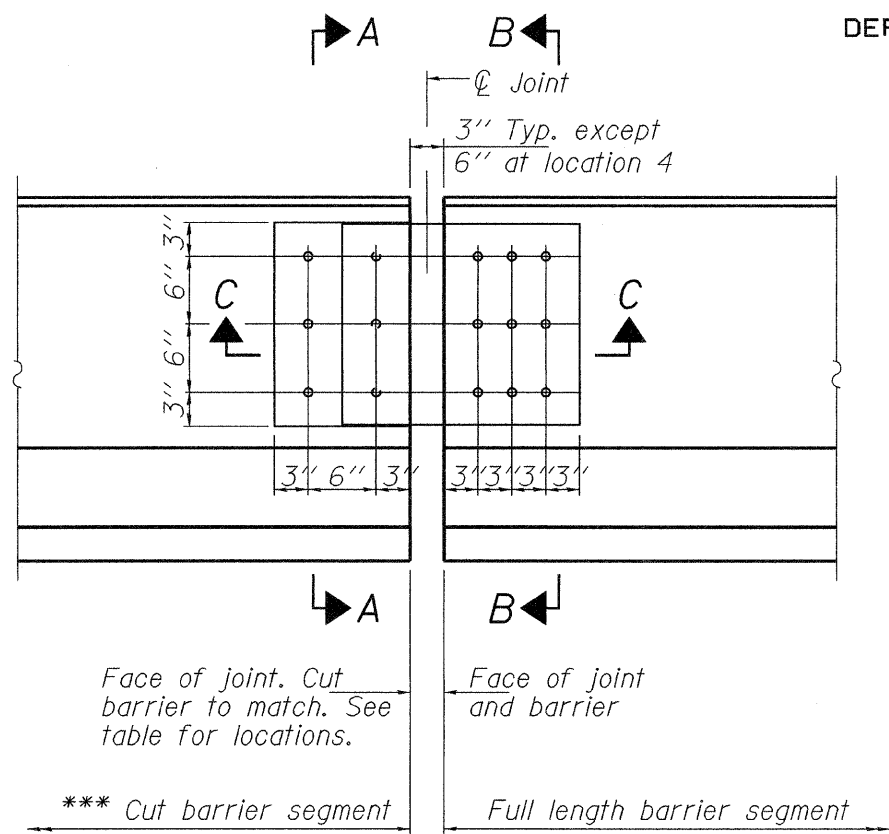
General Notes

1. CONCRETE SHALL BE A MODIFIED CLASS PC PER THE CONTRACT SPECIAL PROVISION, ENTITLED "CONCRETE SAFETY BARRIER, SPECIAL".
2. CONCRETE SHALL HAVE A MINIMUM COMPRESSIVE STRENGTH OF 4000 PSI @ 28 DAYS.
3. WHERE USED, REBAR REINFORCEMENT SHALL BE GRADE 60 AND CONFORM TO DUAL CERTIFICATION TO ASTM A615 AND A706
4. PRECAST BARRIER LENGTH SHALL BE 30 FT.
5. JOINT CONNECTION SYSTEMS, GROUT, ETC. AS SHOWN ARE CONSIDERED SUBSIDIARY.
6. PROTECTIVE COAT SHALL BE APPLIED TO TOP AND SIDES OF BARRIER SURFACES. ENDS AND BOTTOM SHALL NOT BE COATED.

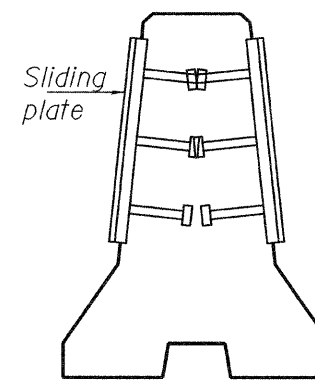
APPROXIMATE PER FT QUANTITIES		
		PRECAST
CONCRETE	CY.	0.108
REBAR	LB.	17.03

FOR CONTRACTOR'S INFORMATION ONLY
WEIGHT OF ONE PRECAST 30 FT. UNIT = APPROX. 7 TONS

STATE OF ILLINOIS
DEPARTMENT OF TRANSPORTATION

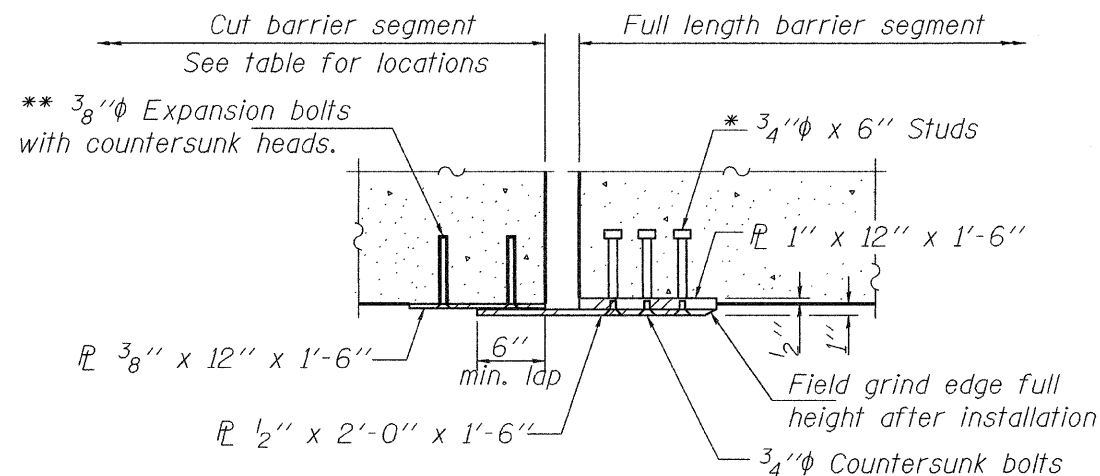


SECTION A-A



SECTION B-B

*** Cut barrier segment to have a minimum length of 5'.
Move barrier joint away from bridge deck joint if necessary
to provide a 5' minimum cut barrier segment



SECTION C-C

* Granular or solid flux filled headed studs conforming to Article 1006.32 of the Std. Specs., automatically end welded.
** Epoxy grout in 6" min. holes according to Article 584 of the Standard Specifications.

Cost of all joint material & installation is included with Safety Barrier, Special.

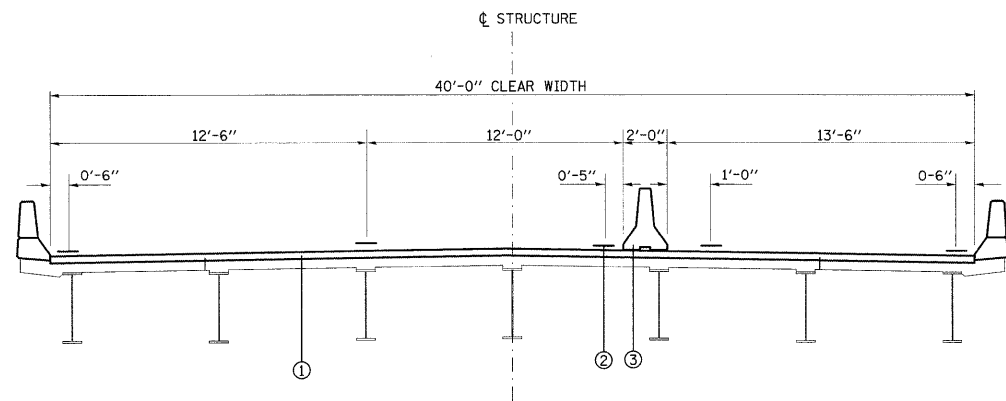
EXPANSION JOINT LOCATIONS

1	Finger plate joint at Abutment A
2	Neoprene joint 20' east of Pier 4
3	Finger plate joint at Pier 8
4	Finger plate joint 320' west of Pier 10
5	Finger plate joint at Pier 11
6	Neoprene joint at Pier 12
7	Finger plate joint at Pier 13
8	Neoprene joint at Pier 18
9	Neoprene joint at Pier 23
10	Neoprene joint at Pier 28

DESIGNED	VHV
CHECKED	GGE
DRAWN	balva
CHECKED	VHV GGE

FILE NAME = #FILE#	USER NAME = #USER#	DESIGNED -	REVISED -	STATE OF ILLINOIS DEPARTMENT OF TRANSPORTATION	BARRIER DETAILS AT EXPANSION JOINTS	F.A.P. RTE. 799	SECTION 1-1	COUNTY ST. CLAIR	TOTAL SHEETS 15	SHEET NO. 12	
PLOT SCALE = #SCALE#	CHECKED -	REVISED -	SCALE:			SHEET NO. 2 OF 2 SHEETS	STA. TO STA.	FED. ROAD DIST. NO.	ILLINOIS FED. AID PROJECT	CONTRACT NO. 76D14	
PLOT DATE = #DATE#	DATE -	REVISED -									

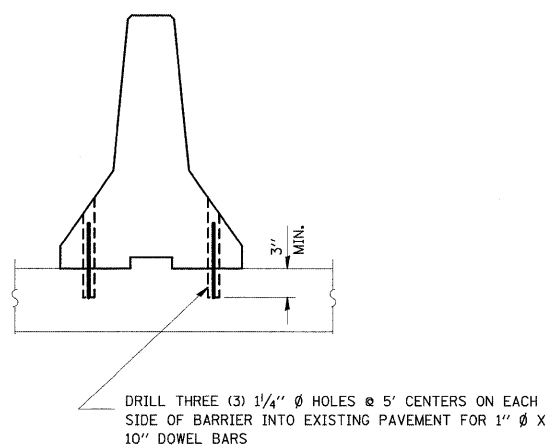
BARRIER AND PAVEMENT MARKING LOCATIONS



LEGEND

- ① PROPOSED POLYMERIZED HMA SURFACE COURSE
 - ② PROPOSED PREFORMED PLASTIC PAVEMENT MARKING
 - ③ CONCRETE SAFETY BARRIER, SPECIAL
- ALL PAVEMENT MARKINGS DIMENSIONS TO CENTER OF STRIPES

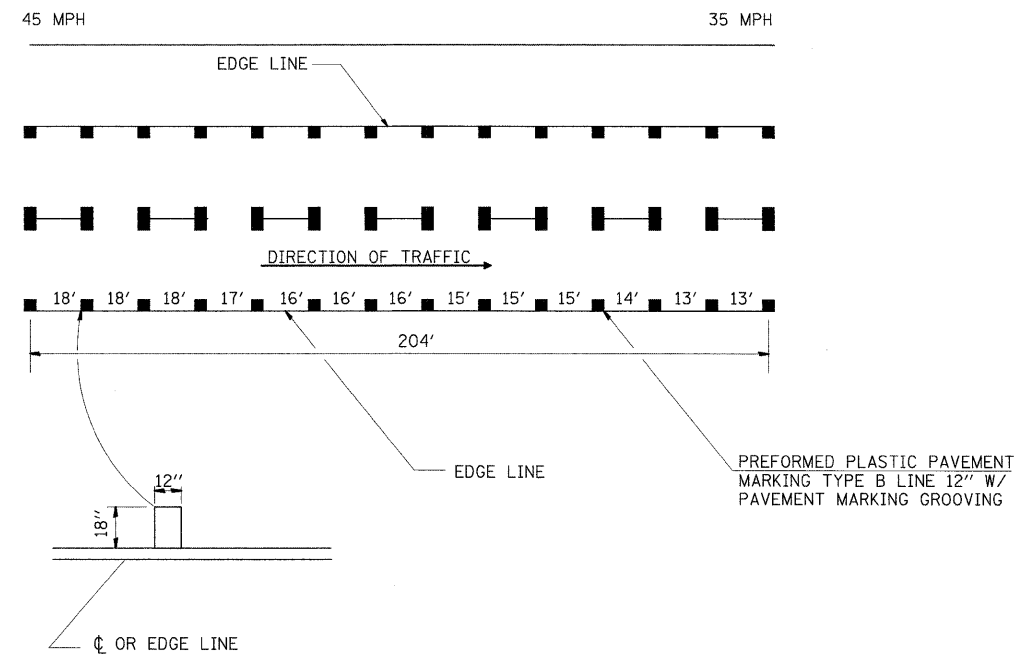
ANCHOR DETAIL



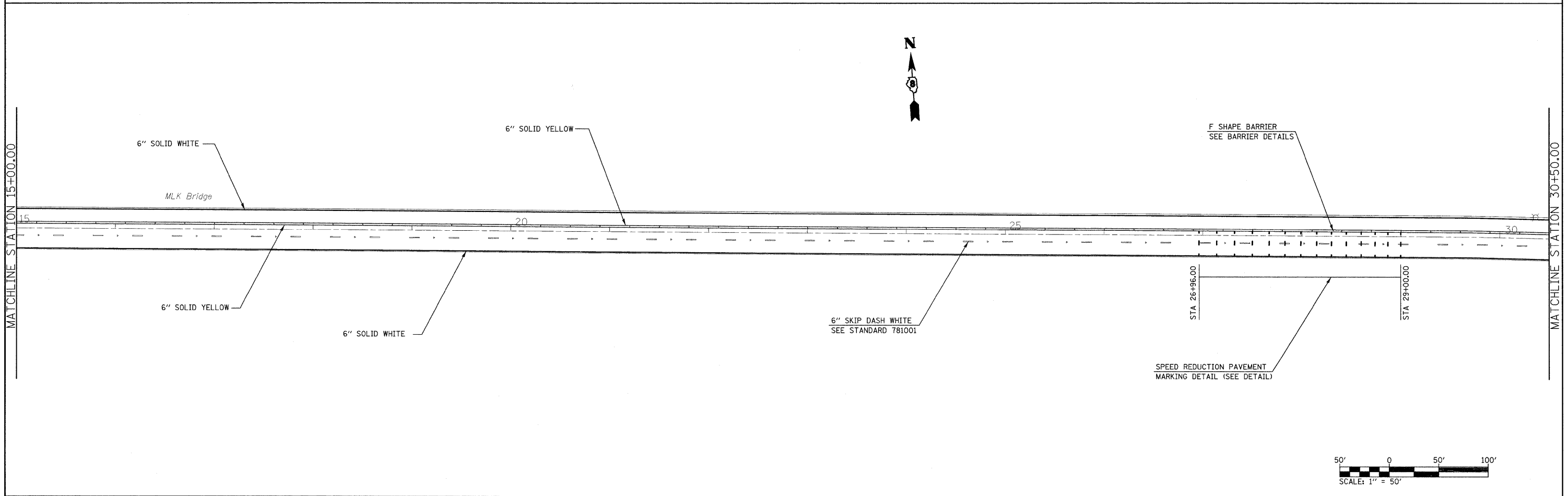
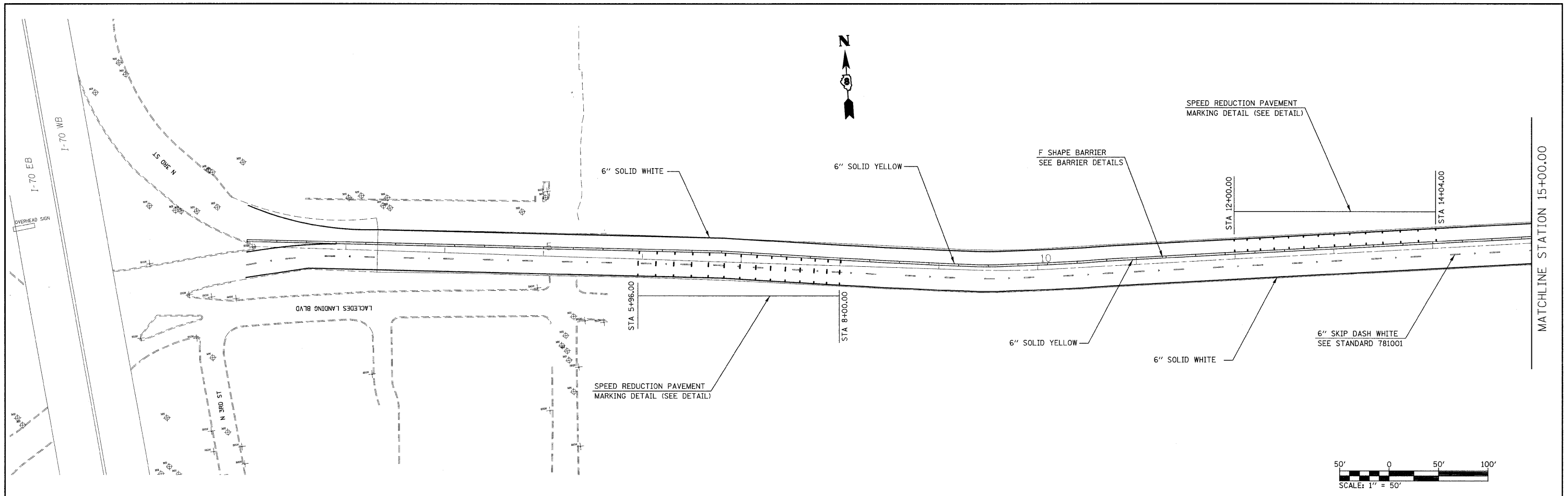
NOTE:
THE LAST UNIT OF CONCRETE SAFETY BARRIER SPECIAL ON THE ILLINOIS SIDE SHALL BE ANCHORED, AS SHOWN ABOVE, TO THE PAVEMENT. THE COST OF ANCHORAGE IS INCLUDED WITH CONCRETE SAFETY BARRIER, SPECIAL.

DOWEL BARS SHALL BE IN ACCORDANCE WITH ARTICAL 1006.11

SPEED REDUCTION PAVEMENT MARKING DETAIL
(SEE PLAN SHEETS FOR LOCATIONS)



FILE NAME =	USER NAME = challandeske	DESIGNED -	REVISED -	STATE OF ILLINOIS DEPARTMENT OF TRANSPORTATION	MISCELLANEOUS DETAILS				F.A.P. RTE.	SECTION	COUNTY	TOTAL SHEETS	SHEET NO.
et:\pw_work\XPWIDOT\CHALLANDESKE\d0141428	D076014-sht-pmk.dgn	DRAWN -	REVISED -						799	1-I	ST CLAIR	15	13
	PLOT SCALE = 50,0000' / IN.	CHECKED -	REVISED -		CONTRACT NO. 76D14								
	PLOT DATE = 6/19/2009	DATE -	REVISED -		SCALE:	SHEET NO.	OF SHEETS	STA.	TO STA.	ILLINOIS FED. AID PROJECT			



FILE NAME =
 c:\pwwork\VPWIDOT\GELINH\d0141408\08760

USER NAME = gelinh
 4-sht-pmk.dgn
 PLOT SCALE = 50.0000' / IN.
 PLOT DATE = 6/22/2009

DESIGNED -
 DRAWN -
 CHECKED -
 DATE -

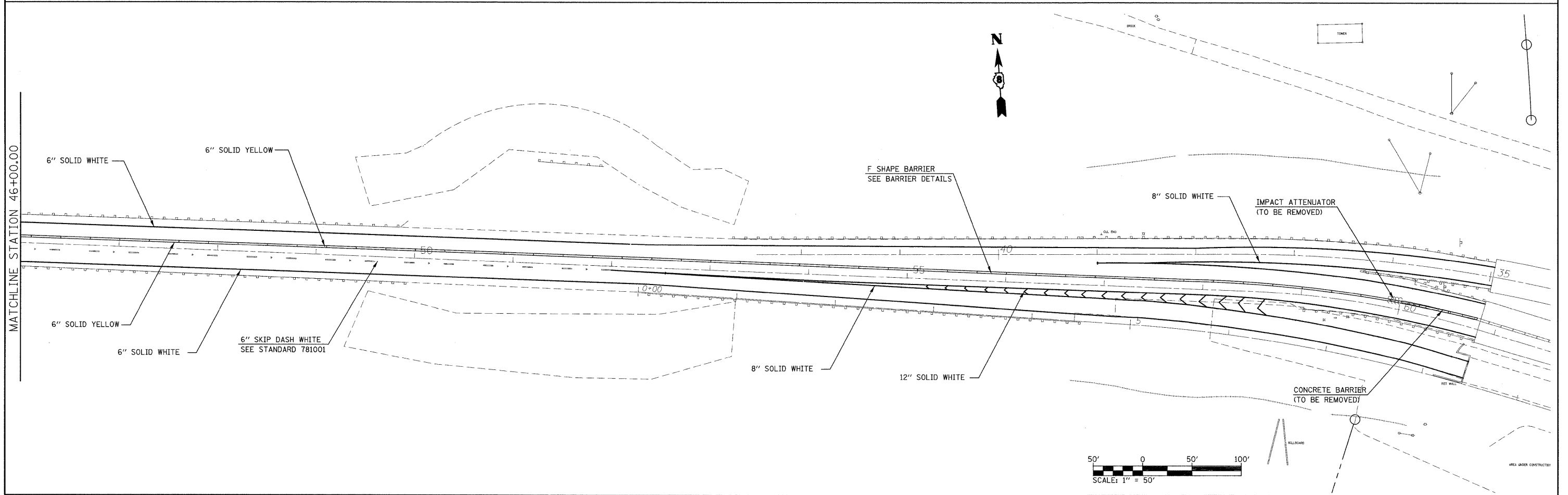
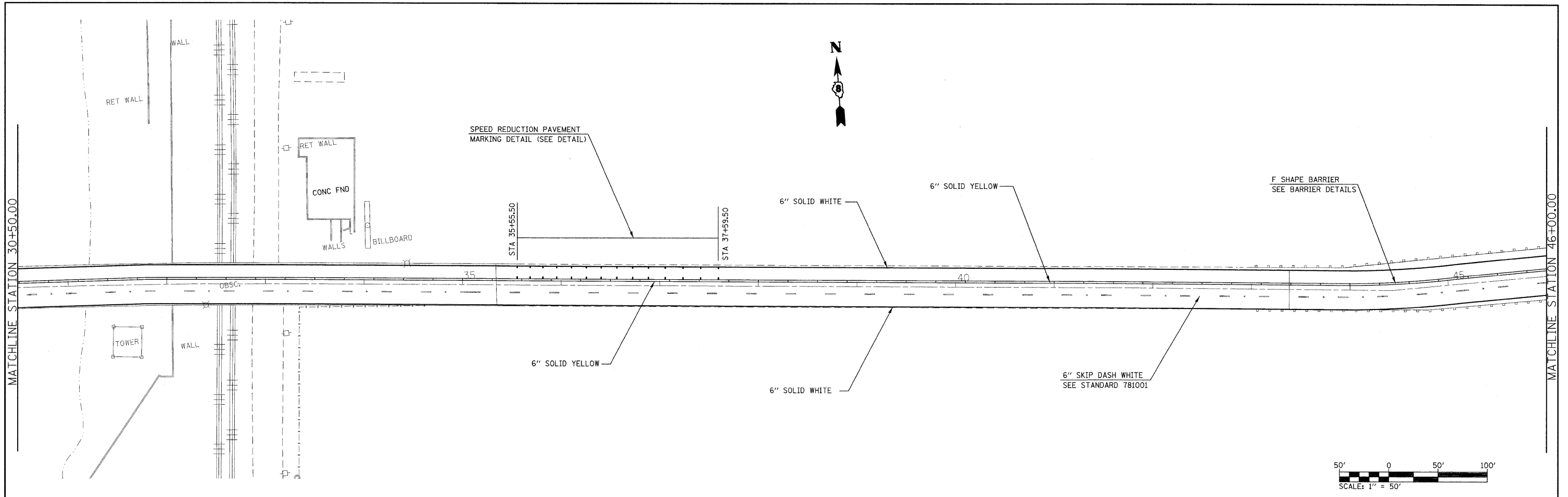
REVISED -
 REVISED -
 REVISED -
 REVISED -

**STATE OF ILLINOIS
 DEPARTMENT OF TRANSPORTATION**

**PAVEMENT MARKING AND
 BARRIER LAYOUT SHEET**

F.A.P. RTE. 799	SECTION 1-I	COUNTY ST CLAIR	TOTAL SHEETS 15	SHEET NO. 14
CONTRACT NO. 76D14				
ILLINOIS FED. AID PROJECT				

SCALE: SHEET NO. OF SHEETS STA. TO STA.



FILE NAME =
 c:\pw_work\p\WIDOT\GELINH\d0141425\08760

USER NAME = gelinh
 4-sh-t-pmk.dgn
 PLOT SCALE = 50.0000' / IN.
 PLOT DATE = 6/22/2009

DESIGNED -
 DRAWN -
 CHECKED -
 DATE -

REVISED -
 REVISED -
 REVISED -
 REVISED -

**STATE OF ILLINOIS
 DEPARTMENT OF TRANSPORTATION**

**PAVEMENT MARKING AND
 BARRIER LAYOUT SHEET**

SCALE: SHEET NO. OF SHEETS STA. TO STA.

F.A.P. RTE.	SECTION	COUNTY	TOTAL SHEETS	SHEET NO.
799	1-1	ST CLAIR	15	15
CONTRACT NO. 76D14				
ILLINOIS FED. AID PROJECT				