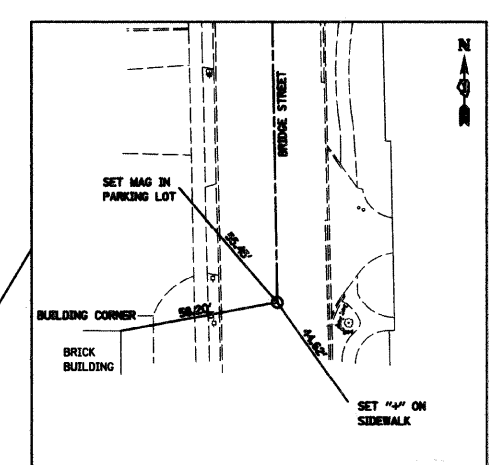
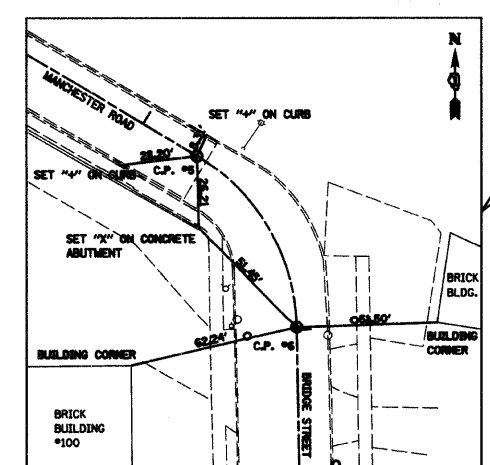
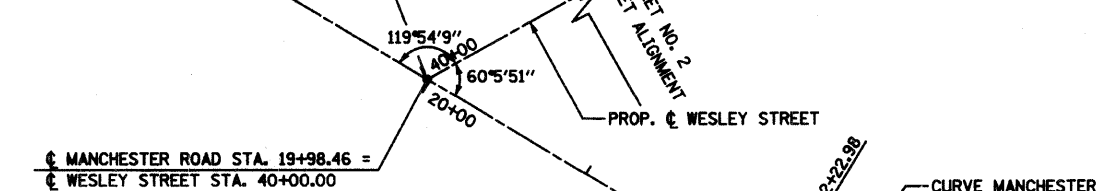
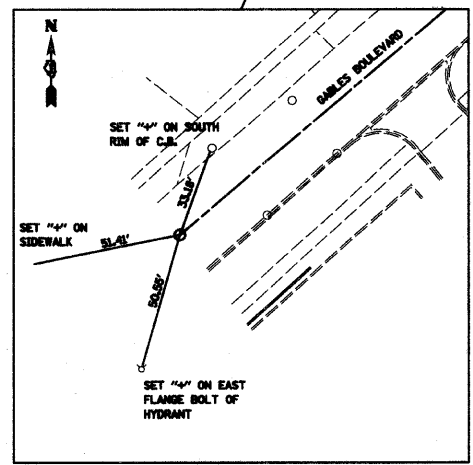
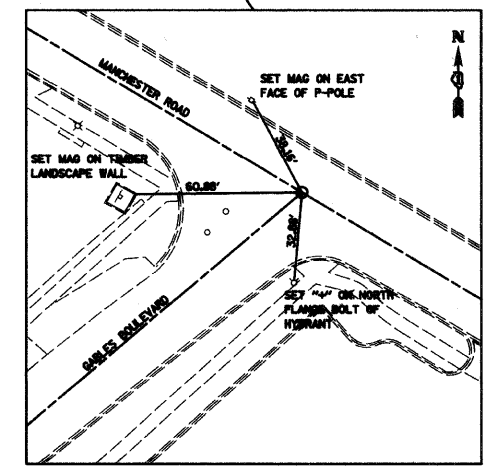
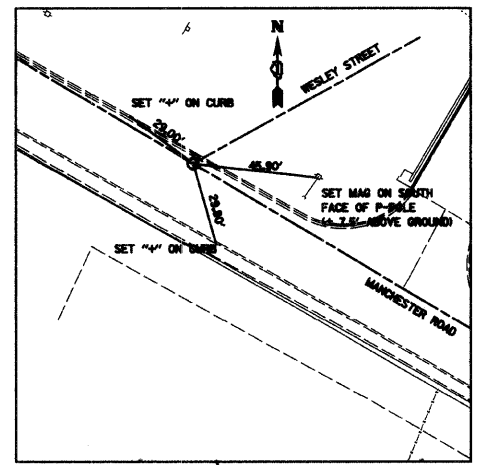
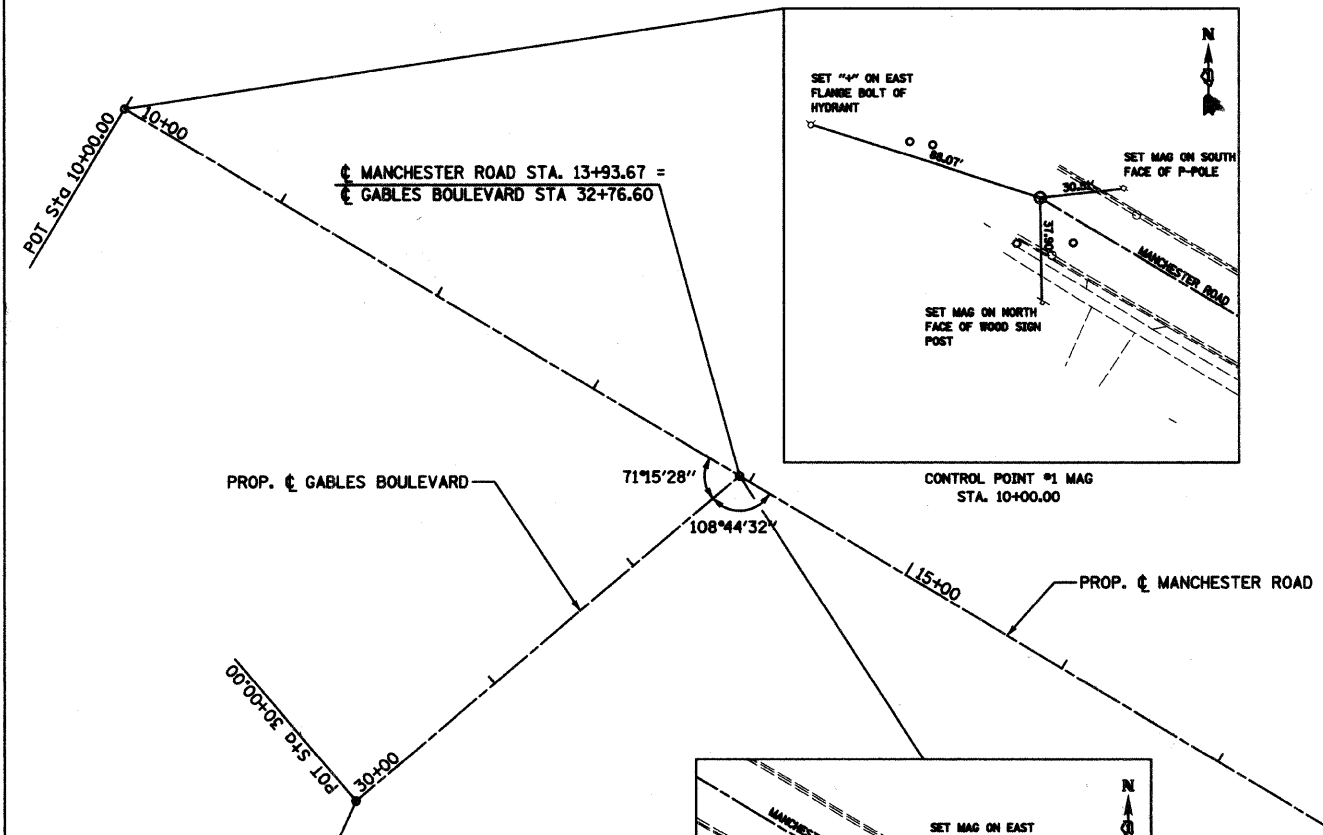


CONTRACT NO. 83908

BENCH MARK SUMMARY

NAME	ELEVATION	DESCRIPTION	APPROXIMATE STATION	OFFSET
BM "A"	755.03	DATUM BENCHMARK ON 1ST HYDRANT WEST OF C OF BRIDGE STREET (± 400' WEST OF SAID C) ON SOUTH SIDE OF LIBERTY STREET	OUT OF AREA	
BM 101	760.32	RR SPIKE IN EAST FACE OF POWER POLE IN THE SOUTHWEST QUADRANT OF MANCHESTER/BRIDGE STREET, ±40' NORTHEAST OF NORTHEAST CORNER OF BUILDING #100 BRIDGE STREET	MANCHESTER STREET	22+87 24' RT
BM 102	741.47	CUT "□" ON SOUTHWEST CORNER OF CONCRETE BRIDGE ABUTMENT OF IL PRAIRIE PATH BRIDGE OVER UNION PACIFIC RR	ILL. PRAIRIE PATH EXISTING	12+08 18' LT
BM 103	760.60	RR SPIKE IN NORTHEAST FACE OF FIRST POWER POLE EAST OF WESLEY STREET BRIDGE OVER U.P. RR, SOUTH SIDE OF FRONT STREET	FRONT STREET	51+07 25' RT
BM 104	760.85	CUT "□" ON NORTH CURB OF MANCHESTER ROAD, ± 160' WEST OF C OF WESLEY STREET	MANCHESTER STREET	18+57 14' LT
BM 105	735.45	RR SPIKE IN SOUTH FACE OF POWER POLE ON NORTH SIDE OF MANCHESTER ROAD, ± 40' WEST OF C OF GABLES BOULEVARD	MANCHESTER STREET	13+48 19' LT
BM 107	754.95	SET RR SPIKE IN EAST FACE OF 3RD POWER POLE NORTH OF WESLEY STREET ON WEST SIDE OF WESTERN AVENUE	WEST STREET	62+65 33' LT



CONTROL POINTS

C.P. #	NORTHING	EASTING	STATION
1	1894207.5160	557752.7370	10+00.00
2	1893826.1840	557879.6080	30+00.00
3	1894005.2092	558090.4518	13+93.67
4	1893694.4135	558609.2693	19+98.46
5	1893579.0357	558801.8718	22+22.98
6	1893515.9187	558838.3198	22+99.09
7	1893237.0080	558842.8650	25+78.03

PROP. CURVE MANCHESTER
 PI STA. = 22+64.67
 $\Delta = 58^\circ 08' 34''$ (RT)
 $D = 76^\circ 23' 40''$
 $R = 75.00'$
 $T = 41.70'$
 $L = 76.11'$
 $E = 10.81'$
 $\theta = \dots$
 $T.R. = \dots$
 $S.E. RUN = \dots$
 P.C. STA. = 22+22.98
 P.T. STA. = 22+99.09



NOTE: THREE POINT TIES ARE PROVIDED ONLY TO FIND THE GENERAL LOCATION OF CONTROL POINTS, NOT TO ACCURATELY RECREATE THE POINT.

REVISIONS

NAME	DATE

CITY OF WHEATON
 MANCHESTER ROAD / WESLEY STREET
 OVER UNION PACIFIC RAILROAD
 ALIGNMENT, TIES AND
 BENCHMARKS
 SCALE: VERT. 1" = 50'
 HORIZ. 1" = 50'
 DATE 6/4/2008
 DRAWN BY DWJ
 CHECKED BY JLC