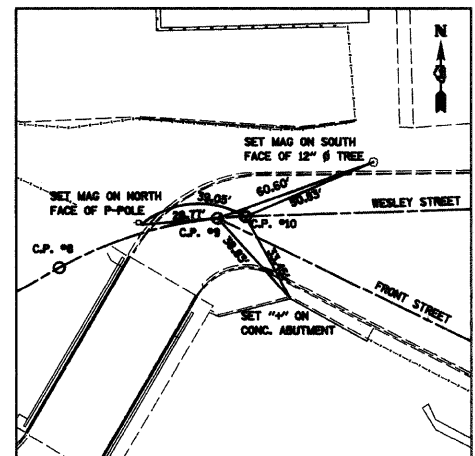
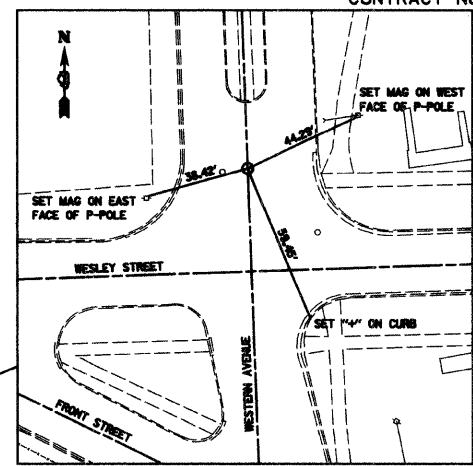


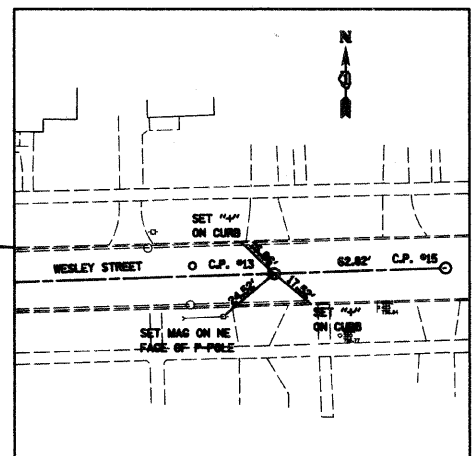
CONTROL POINT #21 MAG AND #22 MAG AND #23 MAG
STA. 64+34.94 AND STA. 65+12.50 AND STA. 65+94.14



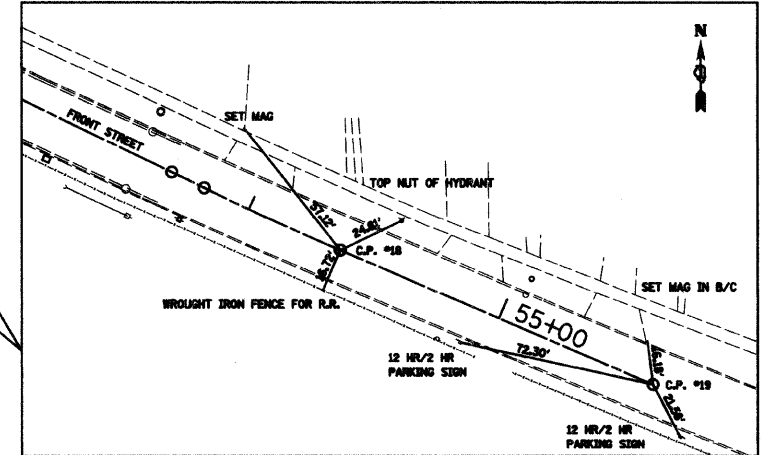
CONTROL POINT #8 MAG AND #9 #9 AND #10 MAG
STA. 41+05.57 AND STA. 41+66.75 AND STA. 41+77.00



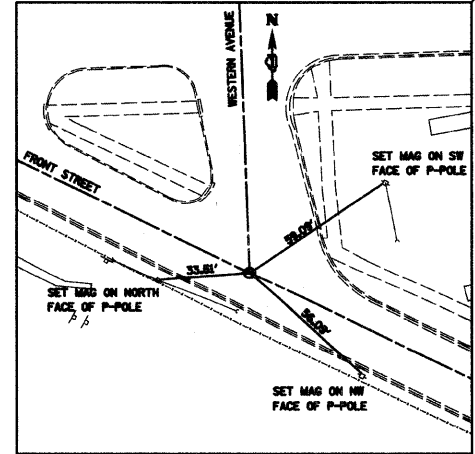
CONTROL POINT #14 MAG
STA. 61+26.09



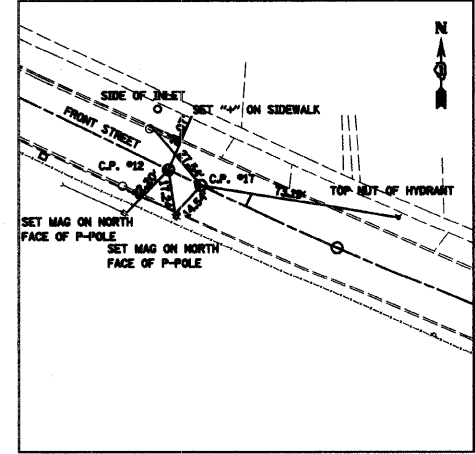
CONTROL POINT #13 MAG AND #15
STA. 46+02.02 AND STA. 46+64.84



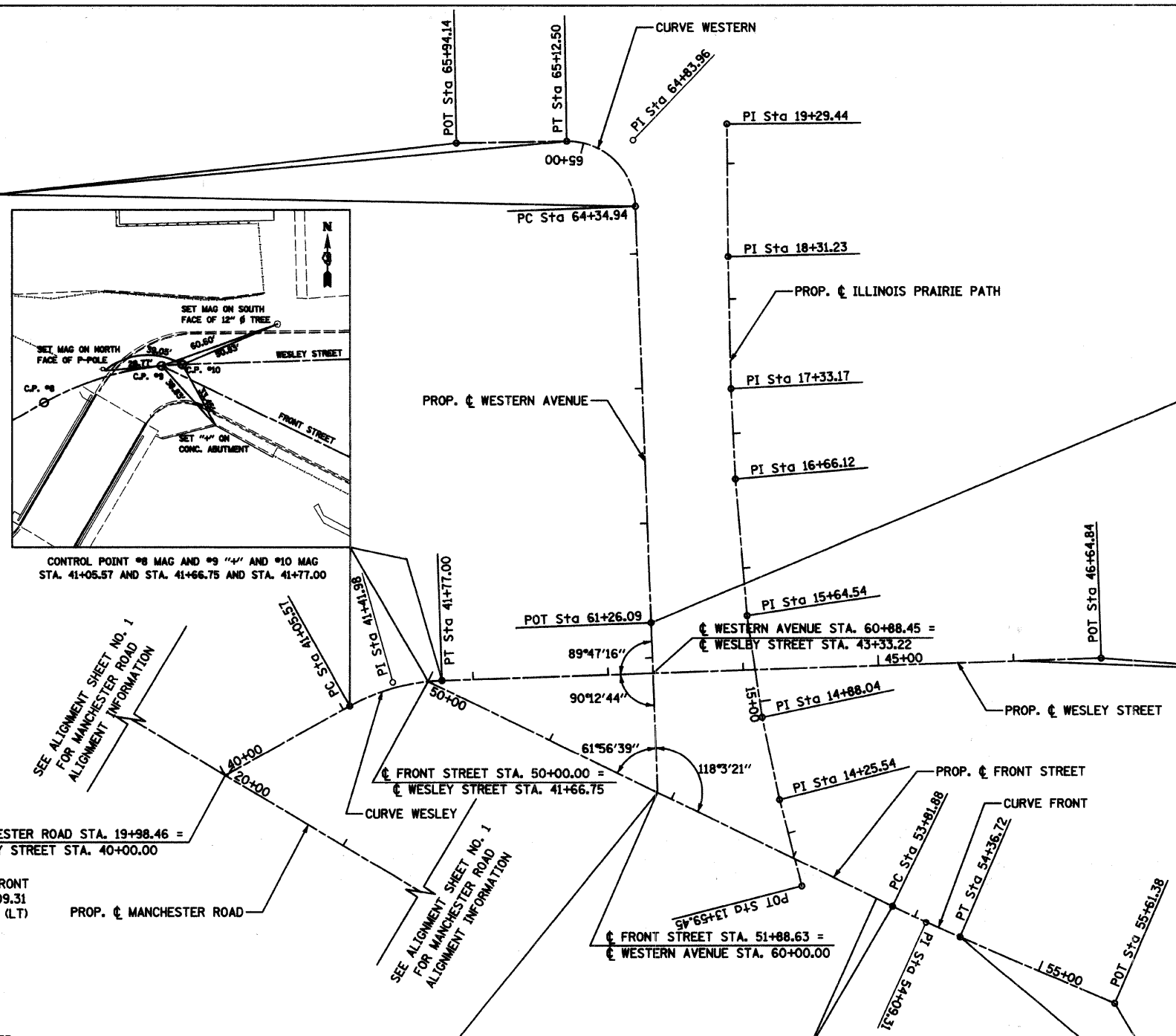
CONTROL POINT #18 MAG AND #19 MAG
STA. 54+36.72 AND STA. 55+61.38



CONTROL POINT #11 MAG
STA. 51+88.63



CONTROL POINT #12 MAG AND #17 MAG
STA. 53+68.68 AND STA. 53+81.88



NOTES:
CONTRACTOR IS RESPONSIBLE FOR SETTING CONTROL POINT #8

PROP. CURVE WESLEY	PROP. CURVE WESTERN	PROP. CURVE FRONT
PI STA. = 41+41.98	PI STA. = 64+83.96	PI STA. = 54+09.31
$\Delta = 27^\circ 17' 08''$ (RT)	$\Delta = 88^\circ 52' 01''$ (LT)	$\Delta = 2^\circ 34' 31''$ (LT)
$D = 38^\circ 11' 50''$	$D = 114^\circ 35' 30''$	$D = 4^\circ 41' 47''$
$R = 150.00'$	$R = 50.00'$	$R = 1,220.00'$
$T = 36.41'$	$T = 49.02'$	$T = 27.42'$
$L = 71.43'$	$L = 77.55'$	$L = 54.83'$
$E = 4.36'$	$E = 20.02'$	$E = 0.31'$
$\theta = \text{---}$	$\theta = \text{---}$	$\theta = \text{---}$
T.R. = ---	T.R. = ---	T.R. = ---
S.E. RUN = ---	S.E. RUN = ---	S.E. RUN = ---
P.C. STA. = 41+05.57	P.C. STA. = 64+34.94	P.C. STA. = 53+81.88
P.T. STA. = 41+77.00	P.T. STA. = 65+12.50	P.T. STA. = 54+36.72

CONTROL POINTS

C.P. #	NORTHING	EASTING	STATION
8	1893745.8750	558701.4471	41+05.57
9	1893764.1340	558759.3950	41+66.75
10	1893764.8220	558769.6236	41+77.00
11	1893681.5770	558928.9980	51+88.63
12	1893602.7720	559090.8910	53+68.68
13	1893778.8280	559194.4120	46+02.02
14	1893807.5840	558924.3760	61+26.09
15	1893780.8980	559257.2000	46+64.84
17	1893596.9956	559102.7601	53+81.88
18	1893574.1123	559152.5863	54+36.72
19	1893524.6420	559267.0150	55+61.38
20	1893769.9699	558925.7557	60+88.45
21	1894116.2288	558913.0542	64+34.94
22	1894164.3888	558862.2434	65+12.50
23	1894163.0100	558780.6120	65+94.14

REVISIONS	
NAME	DATE

CITY OF WHEATON
MANCHESTER ROAD / WESLEY STREET
OVER UNION PACIFIC RAILROAD
ALIGNMENT, TIES AND
BENCHMARKS
SCALE: VERT. 1" = 20'
HORIZ. 1" = 50'
DATE 6/4/2008
DRAWN BY MBT
CHECKED BY ALT