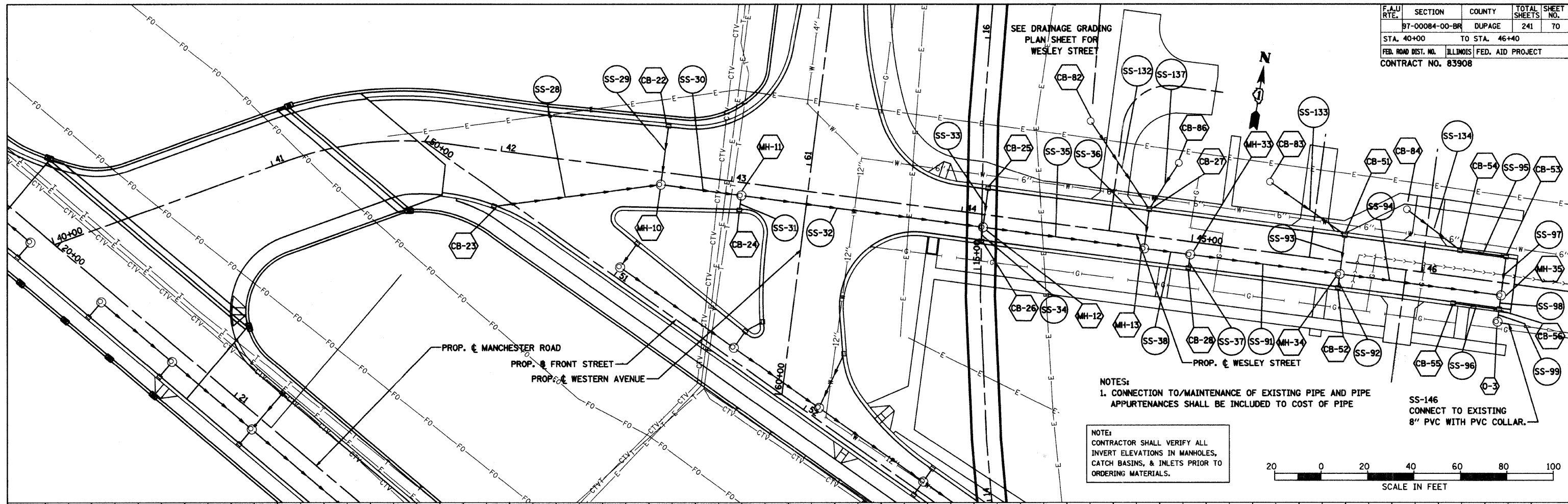


F.A.U. RTE.	SECTION	COUNTY	TOTAL SHEETS	SHEET NO.
87-00084-00-BR	DUPAGE		241	70
STA. 40+00		TO STA. 46+40		
FED. ROAD DIST. NO.		ILLINOIS FED. AID PROJECT		
CONTRACT NO. 83908				

PLAN	SURVEYED	DATE
	PLOTTED	
	CHECKED	
	BY	
	NO. OF WAYS CHECKED	
	DATE	
	ADD FILE NAME	

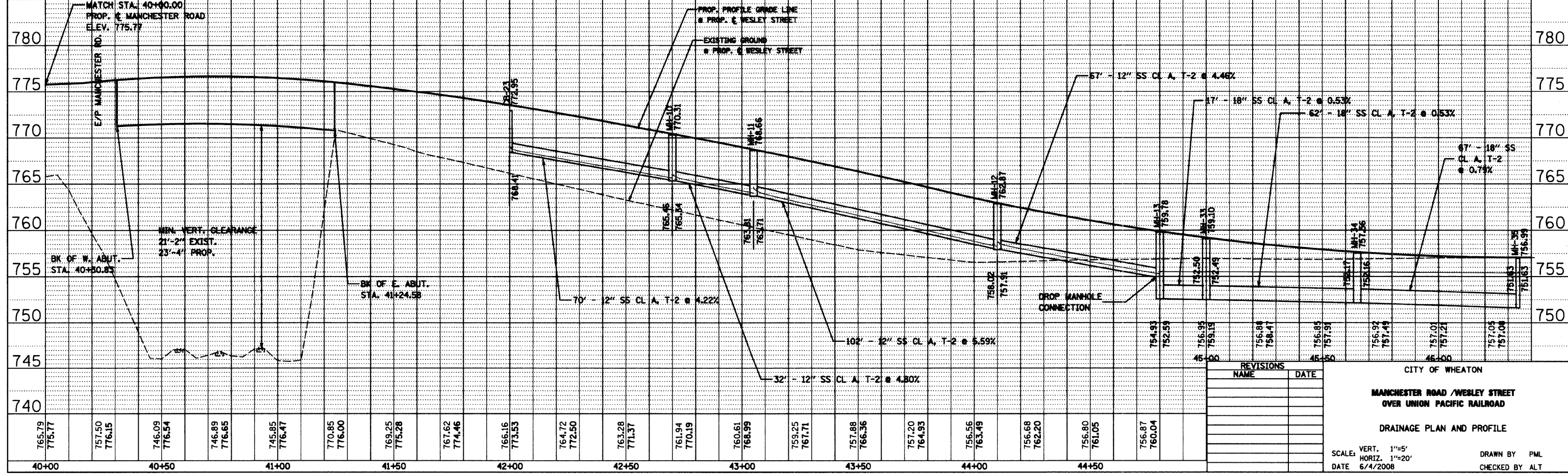
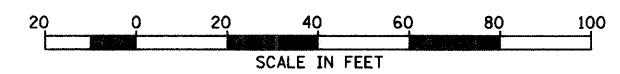
PROFILE	SURVEYED	DATE
	PLOTTED	
	CHECKED	
	BY	
	NO. OF WAYS CHECKED	
	DATE	
	STRUCTURE NOTATION GRID	



NOTES:  
1. CONNECTION TO/MAINTENANCE OF EXISTING PIPE AND PIPE APPURTENANCES SHALL BE INCLUDED TO COST OF PIPE

NOTE:  
CONTRACTOR SHALL VERIFY ALL INVERT ELEVATIONS IN MANHOLES, CATCH BASINS, & INLETS PRIOR TO ORDERING MATERIALS.

SS-146  
CONNECT TO EXISTING  
8" PVC WITH PVC COLLAR.



REVISIONS	
NAME	DATE

CITY OF WHEATON  
**MANCHESTER ROAD /WESLEY STREET  
OVER UNION PACIFIC RAILROAD**  
DRAINAGE PLAN AND PROFILE  
SCALE: VERT. 1"=5'  
HORIZ. 1"=20'  
DATE 6/4/2008  
DRAWN BY PML  
CHECKED BY ALT