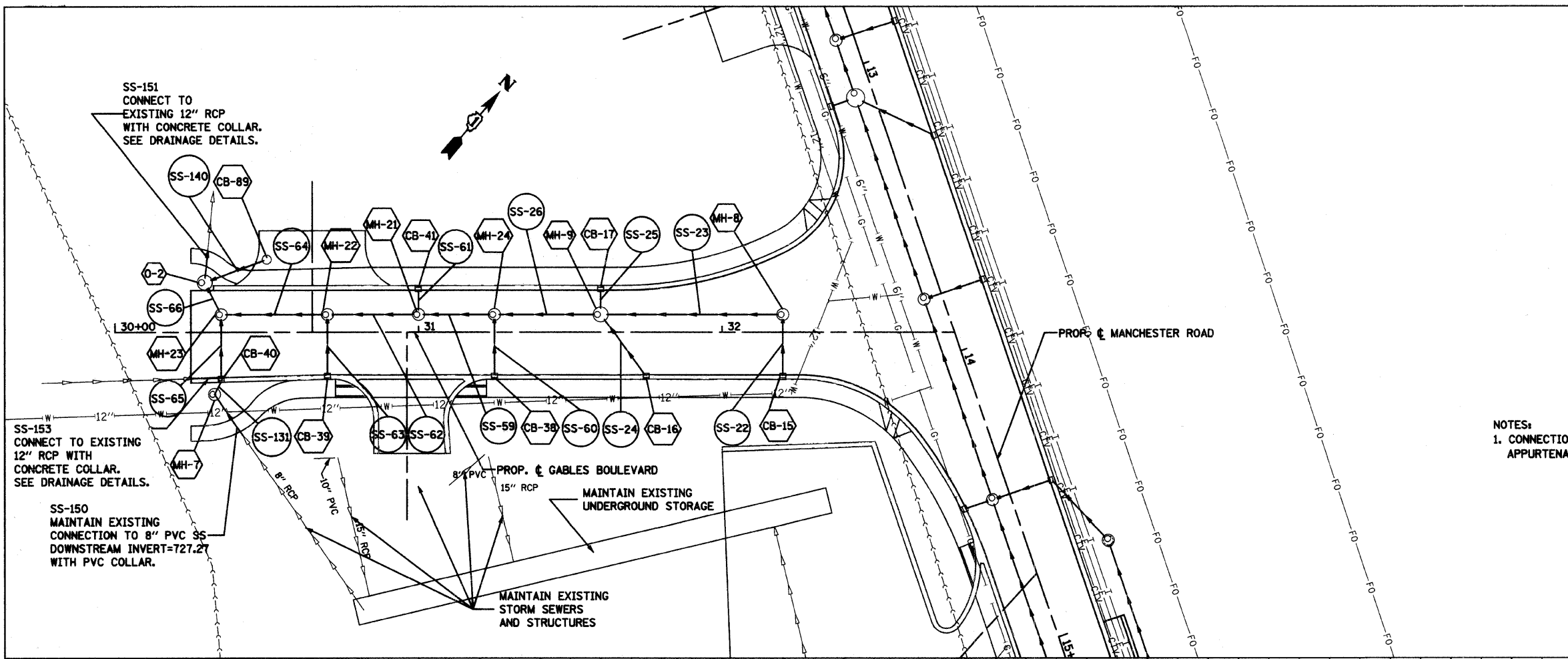


F.A.U. RTE.	SECTION	COUNTY	TOTAL SHEETS	SHEET NO.
97-00084-00-BR	DUPAGE		241	74
STA. 30+00		TO STA. 32+76.60		
FED. ROAD DIST. NO.		ILLINOIS FED. AID PROJECT		
CONTRACT NO. 83908				

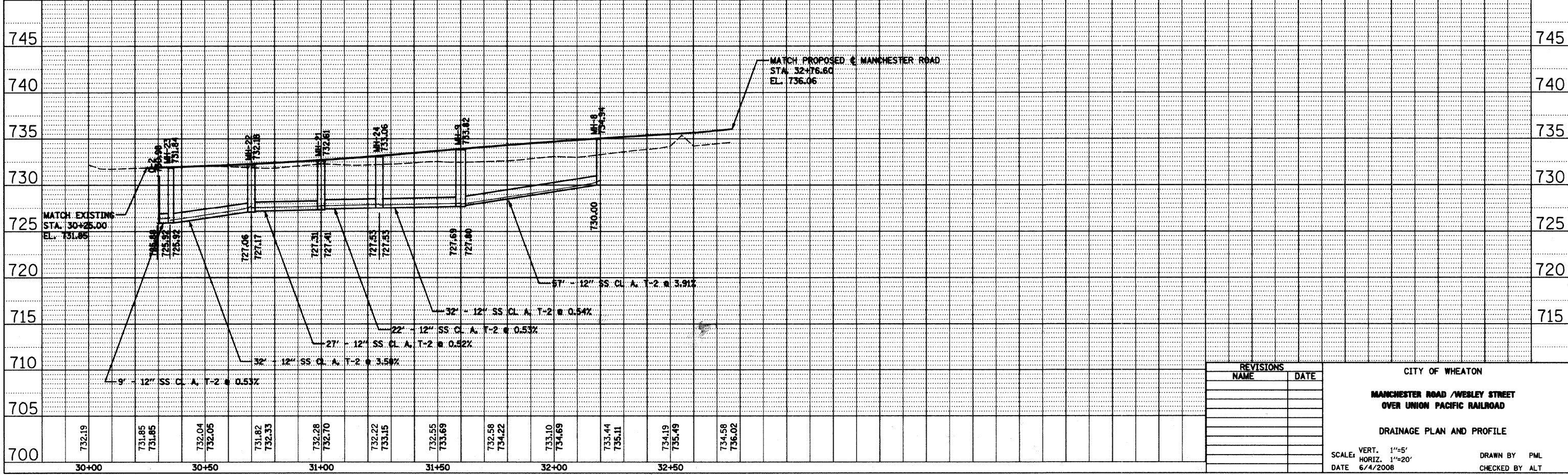
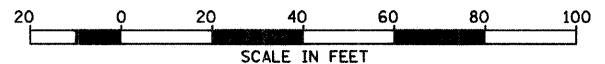
PLAN	SURVEYED	DATE
	BY	
	NOTED	
	REVISIONS	
	NO. OF WAYS CHECKED	
	ADD FILE NAME	

PROFILE	SURVEYED	DATE
	BY	
	NOTED	
	REVISIONS	
	NO. OF WAYS CHECKED	
	STRUCTURE NOTATIONS CRD	



NOTES:  
1. CONNECTION TO/MAINTENANCE OF EXISTING PIPE AND PIPE APPURTENANCES SHALL BE INCLUDED TO COST OF PIPE

NOTE:  
CONTRACTOR SHALL VERIFY ALL INVERT ELEVATIONS IN MANHOLES, CATCH BASINS, & INLETS PRIOR TO ORDERING MATERIALS.



REVISIONS	
NAME	DATE

CITY OF WHEATON  
**MANCHESTER ROAD /WEBLEY STREET  
OVER UNION PACIFIC RAILROAD**  
**DRAINAGE PLAN AND PROFILE**  
SCALE: VERT. 1"=5'  
HORIZ. 1"=20'  
DATE 6/4/2008  
DRAWN BY PML  
CHECKED BY ALT