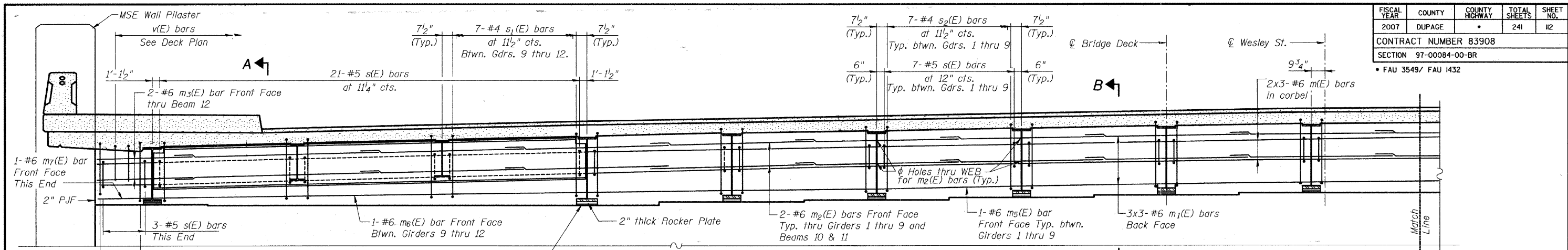
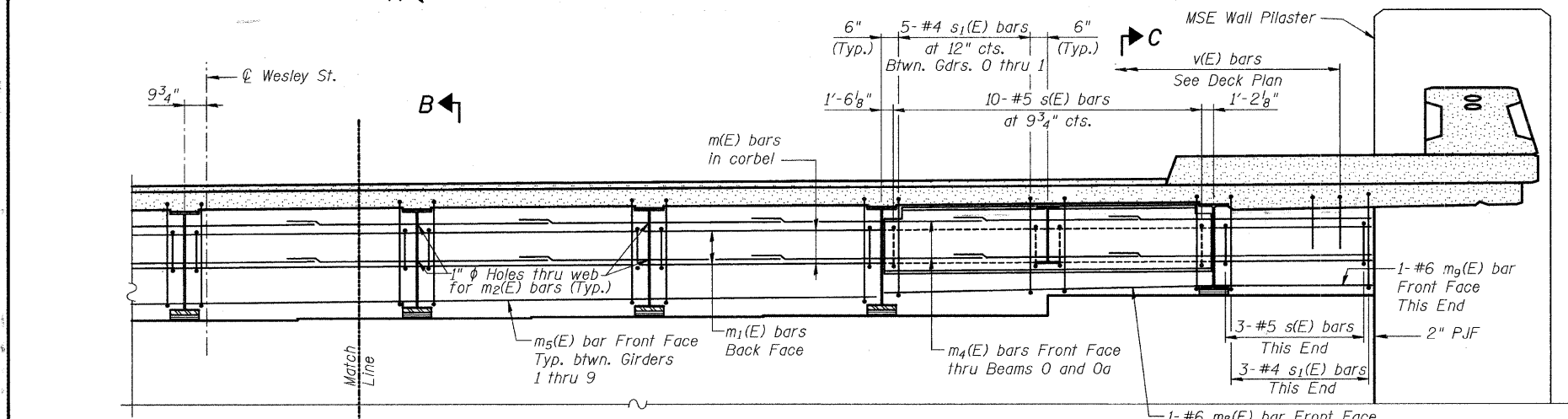


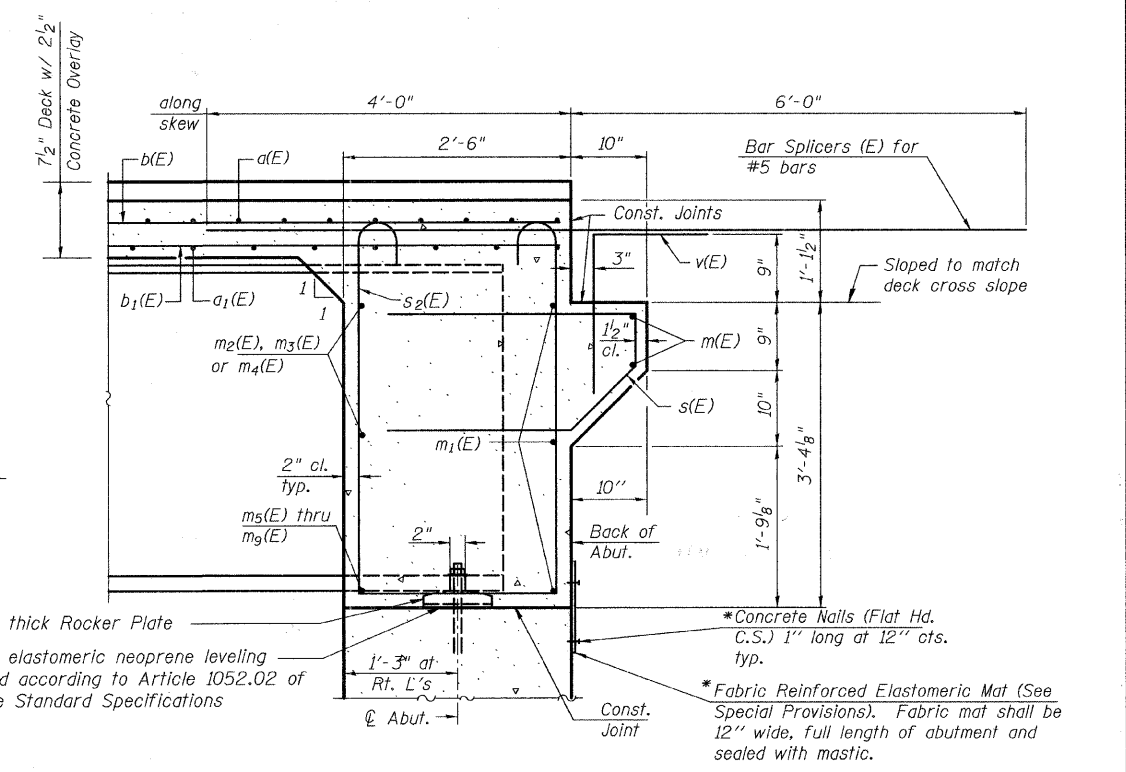
FISCAL YEAR	COUNTY	COUNTY HIGHWAY	TOTAL SHEETS	SHEET NO.
2007	DUPAGE		241	112
CONTRACT NUMBER 83908				
SECTION 97-00084-00-BR				
FAU 3549/ FAU 1432				



**DIAPHRAGM SECTION AT S. ABUTMENT**  
(Along Centerline Bearing) (Looking South)



**DIAPHRAGM SECTION AT S. ABUTMENT**  
(Along Centerline Bearing) (Looking South)

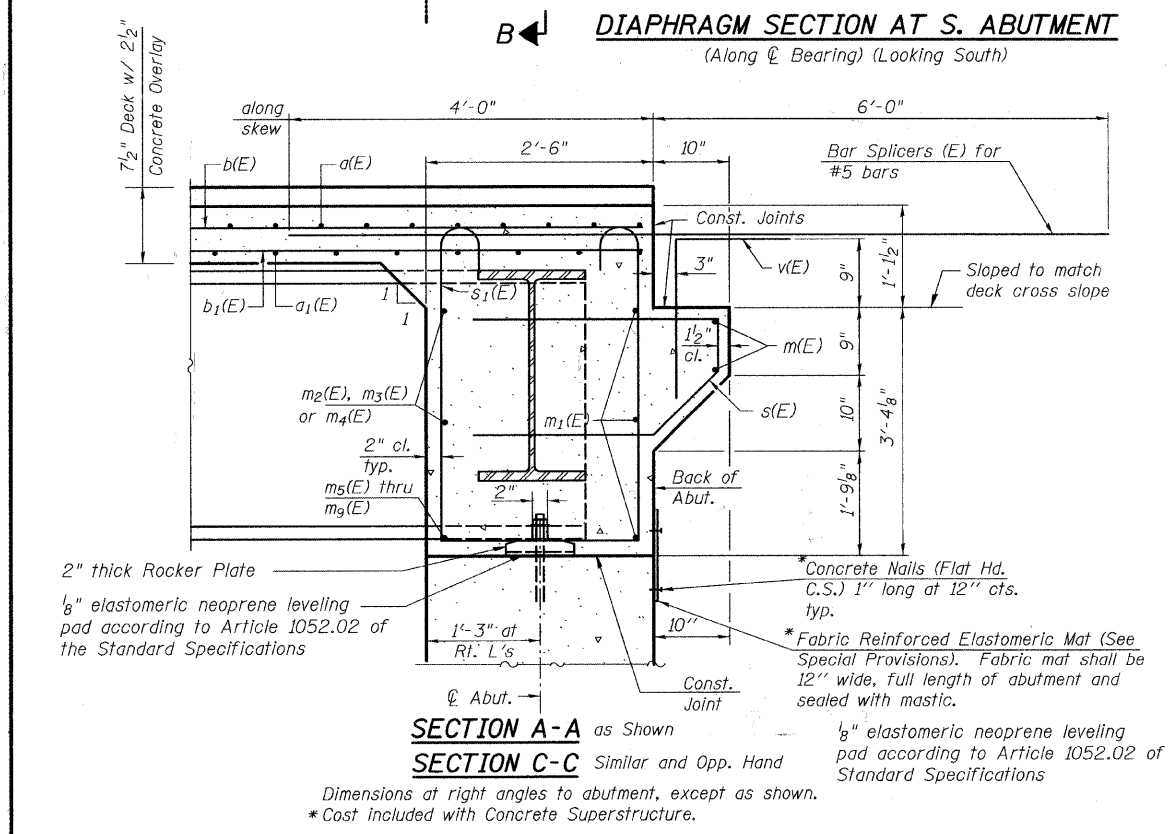


**SECTION B-B**

Dimensions at right angles to abutment, except as shown.  
\*Cost included with Concrete Superstructure.

**MIN. BAR LAP**  
#6 bar = 2'-9"

Notes:  
Reinforcement bars in diaphragm are billed with superstructure on sheet S-8.  
Concrete in diaphragm is included with Concrete Superstructure on sheet S-8.  
For details of bars s(E), s1(E), s2(E) and v(E) see sheet S-8.  
The s(E), s1(E) and s2(E) bars shall be placed parallel to the girders. Spacing for these bars shall be at right angles to the girders.  
For bearing details see sheet S-17.



**SECTION A-A** as Shown  
**SECTION C-C** Similar and Opp. Hand

Dimensions at right angles to abutment, except as shown.  
\*Cost included with Concrete Superstructure.

**HDR**  
HDR Engineering, Inc.

CITY OF WHEATON	
MANCHESTER ROAD/ WESLEY STREET OVER UNION PACIFIC RAILROAD	
<b>DIAPHRAGM DETAILS</b>	
DRAWN	JM
CHECKED	VEVS
APPROVED	BSK
DATE	06/04/2008
SCALE	NONE
SHEET NO. <b>S-9</b>	