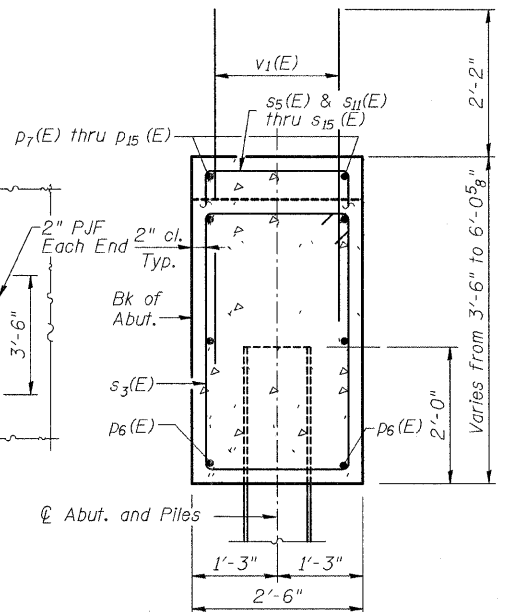
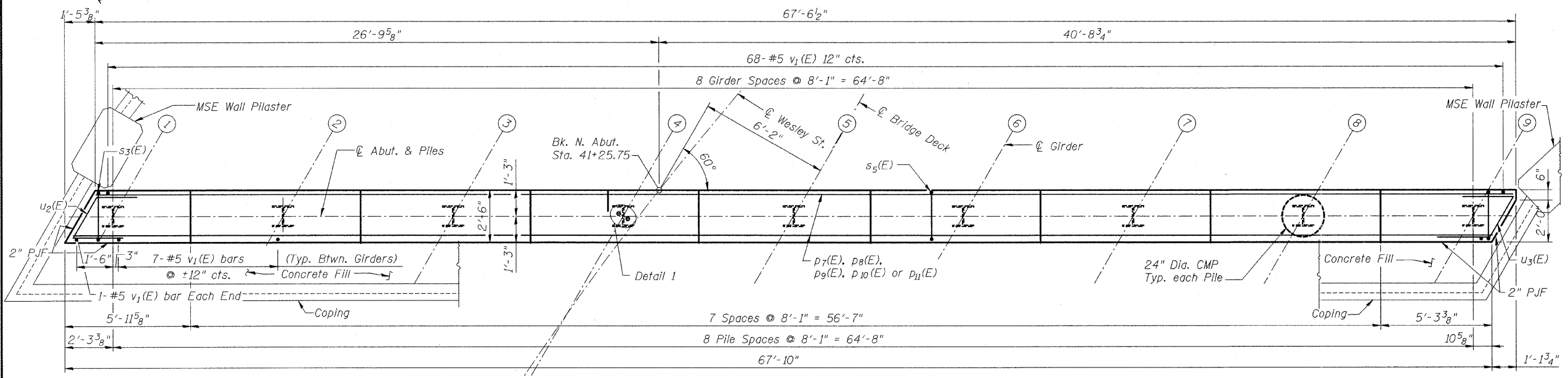


ELEVATION
(Looking North)



TYP. ABUT. SECTION



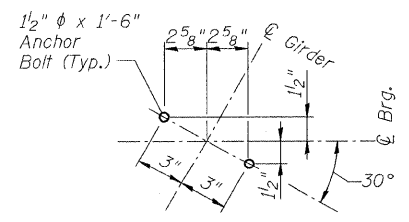
PLAN

MIN. BAR LAP
#5 - 1'-8"
#8 - 3'-5"

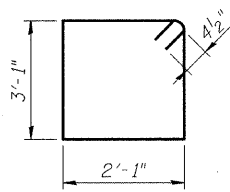
BILL OF MATERIAL

Bar	No.	Size	Length	Shape
p6(E)	12	#8	35'-5"	—
p7(E)	4	#5	32'-0"	—
p8(E)	4	#5	27'-11"	—
p9(E)	4	#5	23'-11"	—
p10(E)	1	#5	38'-0"	—
p11(E)	1	#5	36'-6"	—
p12(E)	1	#5	21'-10"	—
p13(E)	1	#5	20'-4"	—
p14(E)	1	#5	5'-8"	—
p15(E)	1	#5	4'-2"	—
s3(E)	66	#4	11'-1"	□
s5(E)	9	#4	5'-7"	U
s11(E)	9	#4	7'-5"	U
s12(E)	9	#4	6'-7"	U
s13(E)	17	#4	8'-1"	U
s14(E)	17	#4	9'-1"	U
s15(E)	4	#4	9'-11"	U
u2(E)	6	#6	6'-4"	U
u3(E)	4	#6	6'-2"	U
v1(E)	126	#5	4'-4"	—
Concrete Structures		Cu. Yd.	29.9	
Reinforcement Bars, Epoxy Coated		Pound	3,110	

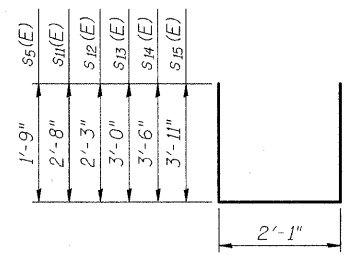
- Notes:
- Bars indicated thus 10 x 3-#5 etc. indicates 20 lines of bars with 3 lengths per line.
 - Pour steps monolithic with cap.



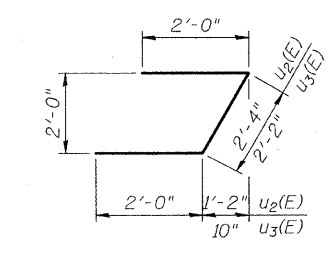
DETAIL 1
(Girders 1 thru 9)



BARS s3(E)



BARS s5(E) AND s11(E) THRU s15(E)



BARS u2(E) AND u3(E)

CITY OF WHEATON
MANCHESTER ROAD/ WESLEY STREET
OVER UNION PACIFIC RAILROAD

N. ABUTMENT DETAILS

DRAWN	JM	SHEET NO.
CHECKED	VEVS	S-21
APPROVED	BSK	
DATE	06/04/2008	
SCALE	NONE	

HDR
HDR Engineering, Inc.