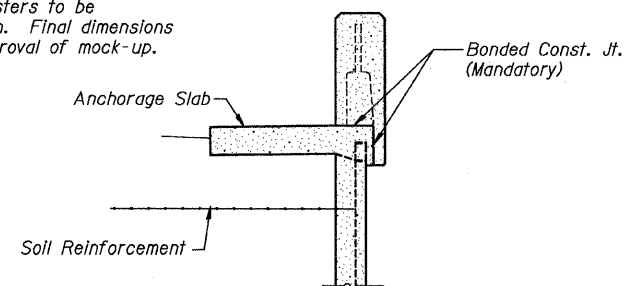
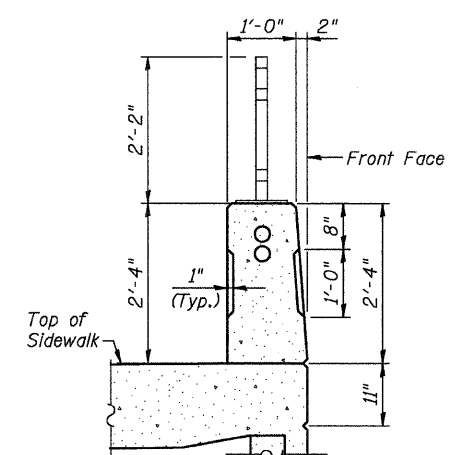


FISCAL YEAR	COUNTY	COUNTY HIGHWAY	TOTAL SHEETS	SHEET NO.
2007	DUPAGE		241	132
CONTRACT NUMBER 83908				
SECTION 97-00084-00-BR				
• FAU 3549/ FAU 1432				

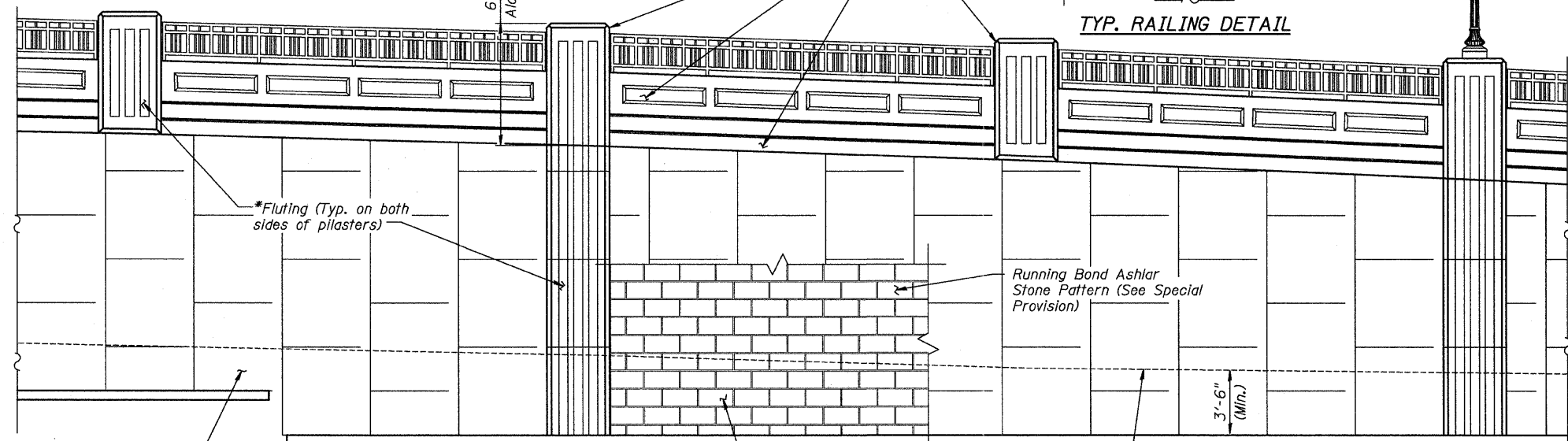
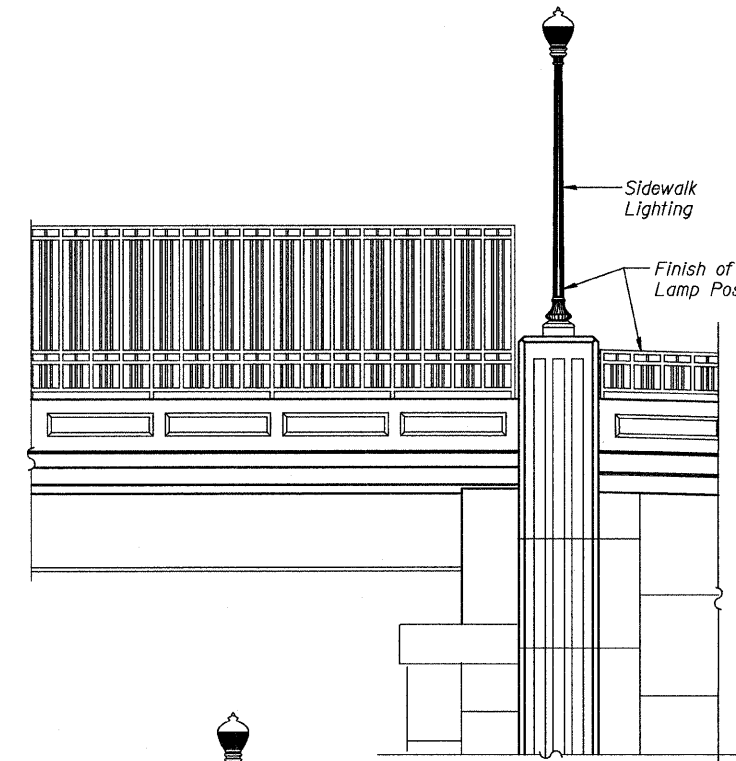
\*Fluting in all Pilasters to be developed as shown. Final dimensions are subject to approval of mock-up.



SECTION C-C

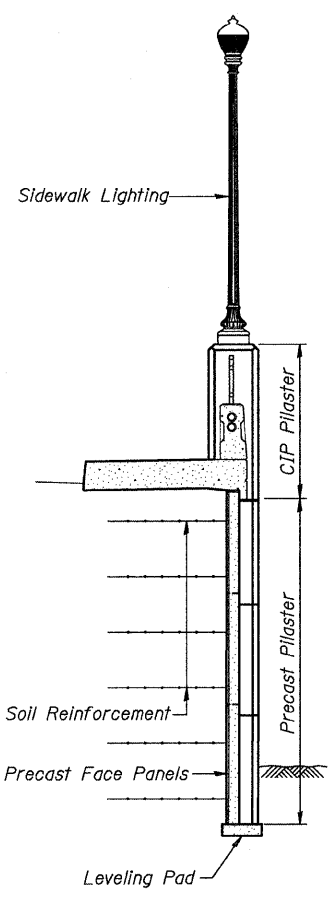


TYP. RAILING DETAIL

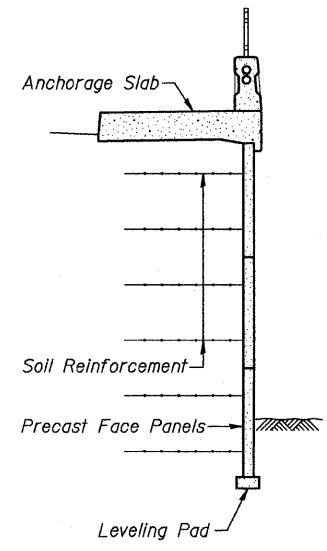


TYPICAL ELEVATION

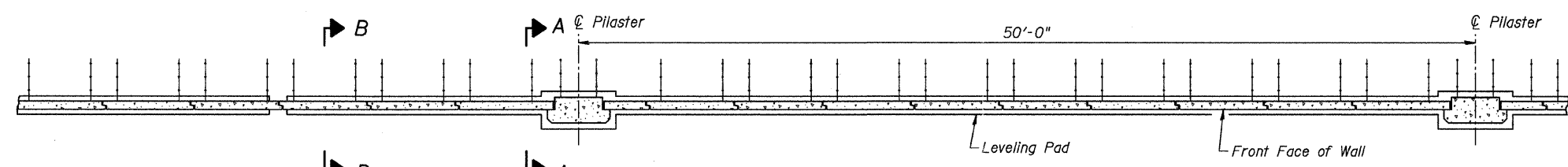
Architectural Finish at MSE Wall to Include Running Bond Limestone with Nominal 12" x 24" Pattern Finish Stone with Concrete Stain Color 1. Cost of Pattern and Stain Included in Mechanically Stabilized Earth Retaining Wall



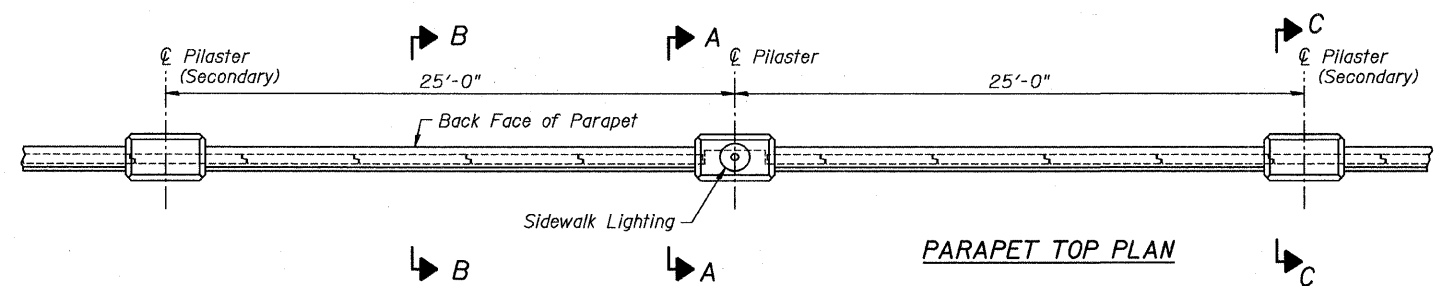
SECTION A-A



SECTION B-B



LEVELING PAD PLAN



PARAPET TOP PLAN

Note:  
For railing spacing see sheet S-11.

CITY OF WHEATON  
 MANCHESTER ROAD/ WESLEY STREET  
 OVER UNION PACIFIC RAILROAD  
**MSE RETAINING WALL  
 WALL DETAILS**

DRAWN	JM	SHEET NO.
CHECKED	VEVS	S-29
APPROVED	BSK	
DATE	06/04/2008	
SCALE	NONE	

