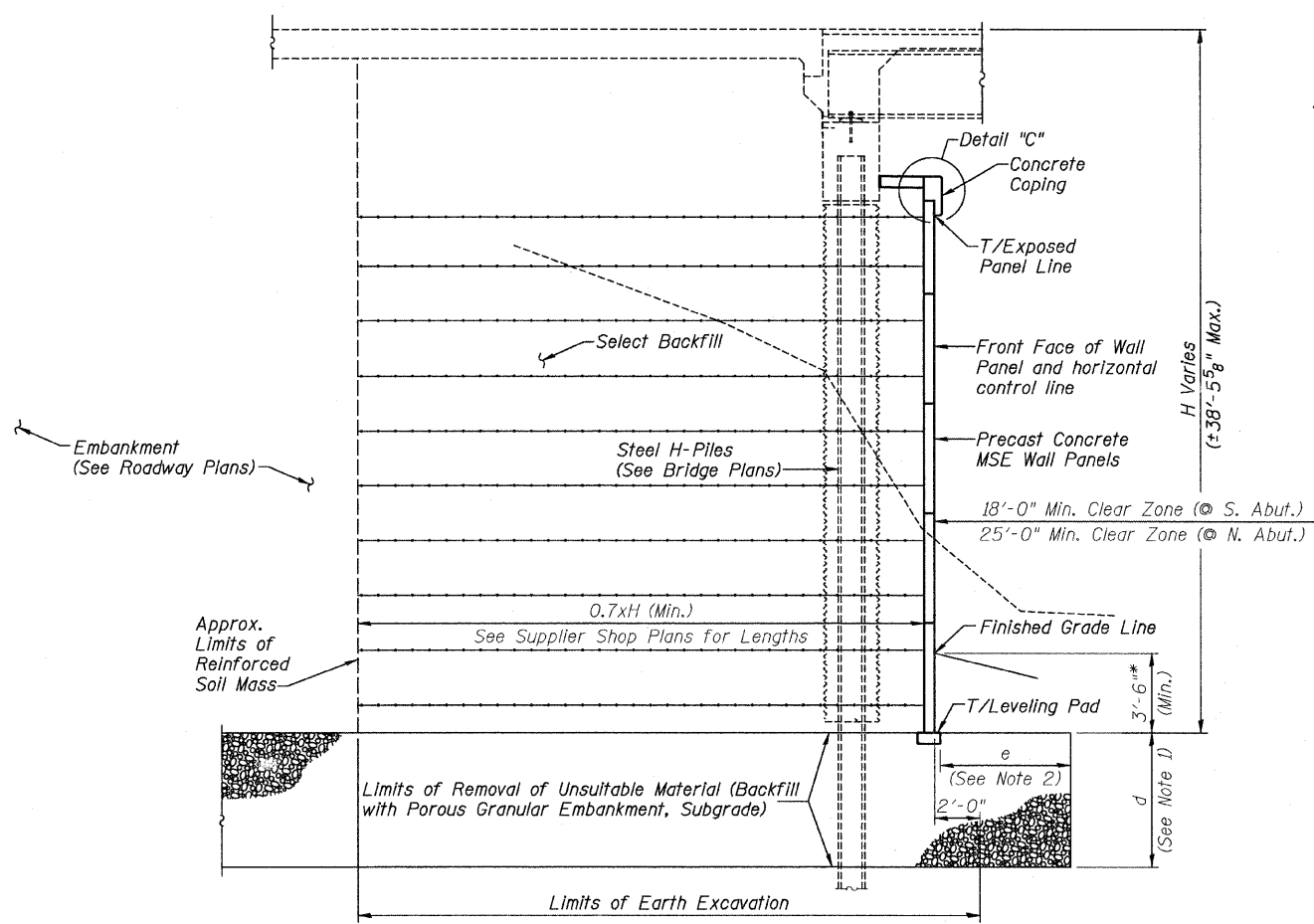
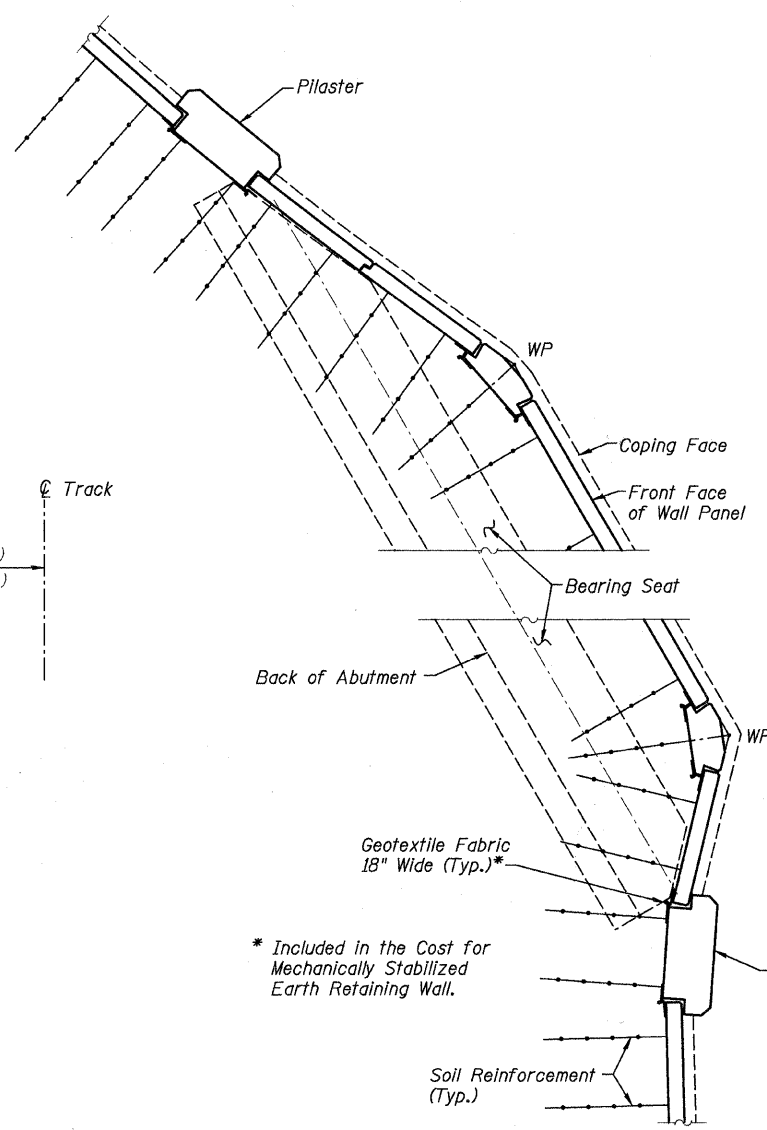


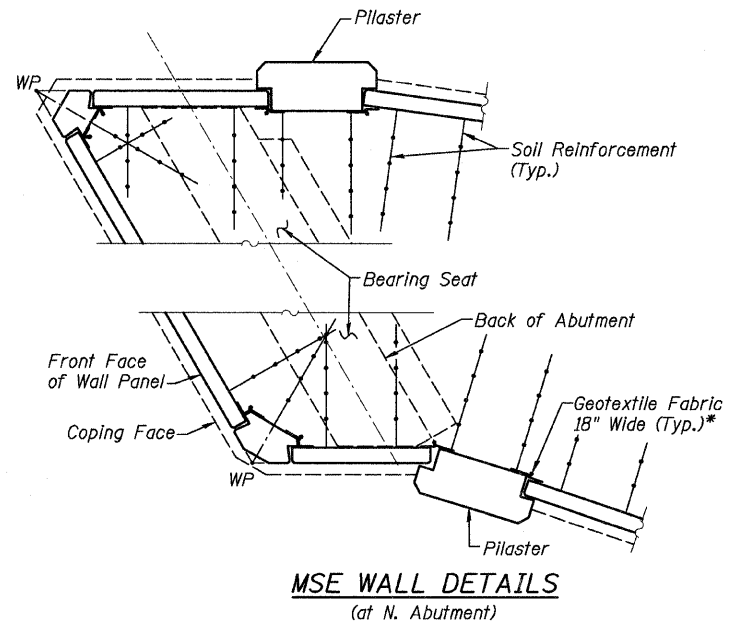
FISCAL YEAR	COUNTY	COUNTY HIGHWAY	TOTAL SHEETS	SHEET NO.
2007	DUPAGE	*	241	133
CONTRACT NUMBER 83908				
SECTION 97-00084-00-BR				
* FAU 3549/ FAU 1432				



**SECTION THRU INTEGRAL ABUTMENT**  
(Dimensions are @ Rt. L's)



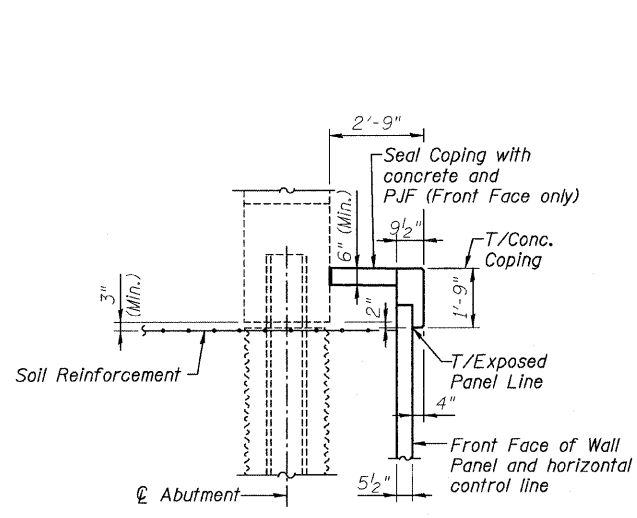
**MSE WALL DETAILS**  
(at S. Abutment)



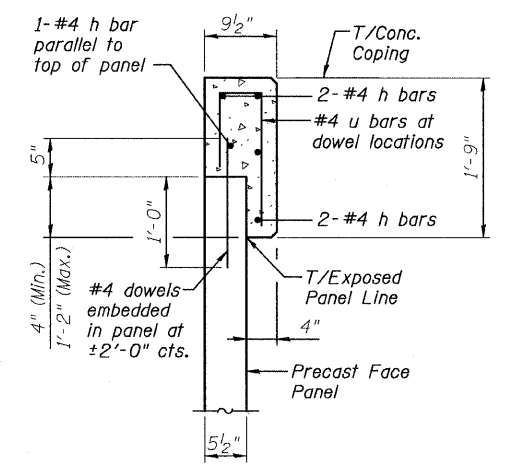
**MSE WALL DETAILS**  
(at N. Abutment)

**NOTES:**

1. For Limits of Removal of Unsuitable Material see sheets S-26 and S-27.
2. Edge distance "e" is the same as the Removal Depth "d".
3. Portions of the MSE Wall in front of the North and South Abutments do not require the removal of unsuitable material. See sheets S-26 and S-27.
4. Concrete coping and concrete fill between the coping and the bridge abutments are included in the cost for Mechanically Stabilized Earth Retaining wall.

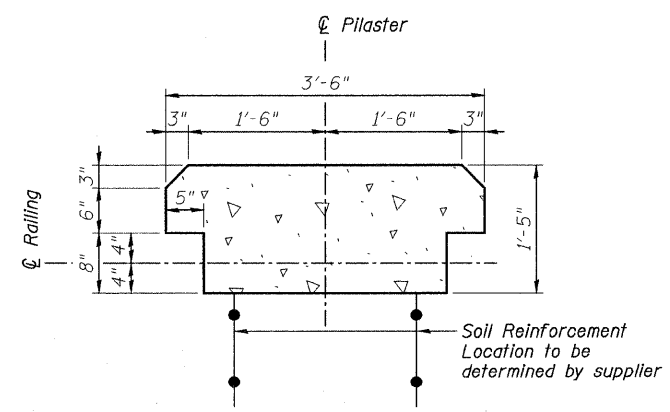


**DETAIL "C"**



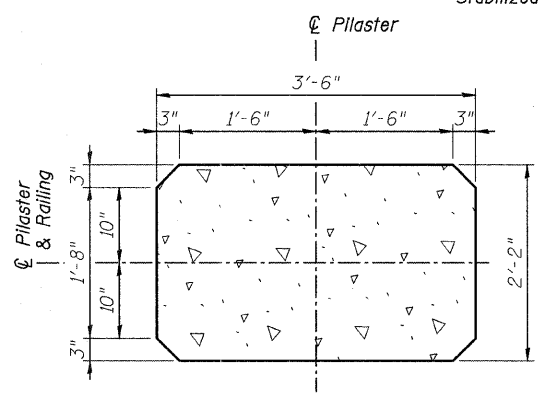
**TYPICAL COPING REINFORCEMENT DETAIL**

Note:  
Coping concrete and reinforcement are included in cost for Mechanically Stabilized Earth Retaining Wall.



**PRECAST PILASTER DETAIL**

Cost for Precast Pilaster Included in the cost for Mechanically Stabilized Earth Retaining Wall.



**CIP PILASTER DETAIL**

CITY OF WHEATON		SHEET NO.
MANCHESTER ROAD/ WESLEY STREET OVER UNION PACIFIC RAILROAD		
<b>MSE RETAINING WALL WALL DETAILS</b>		
DRAWN	JM	S-30
CHECKED	VEVS	
APPROVED	BSK	
DATE	06/04/2008	
SCALE	NONE	

