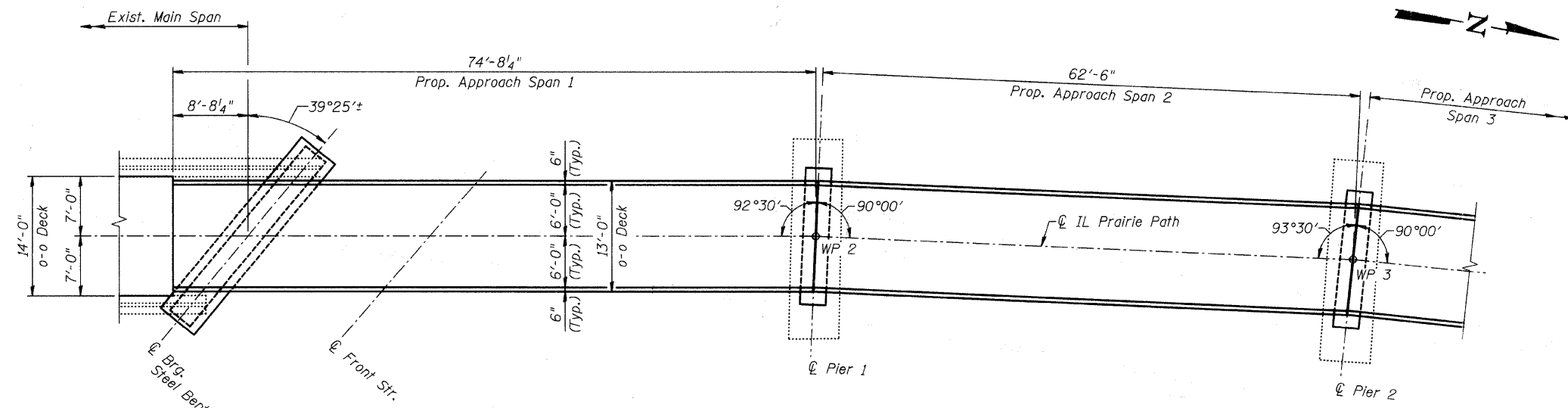
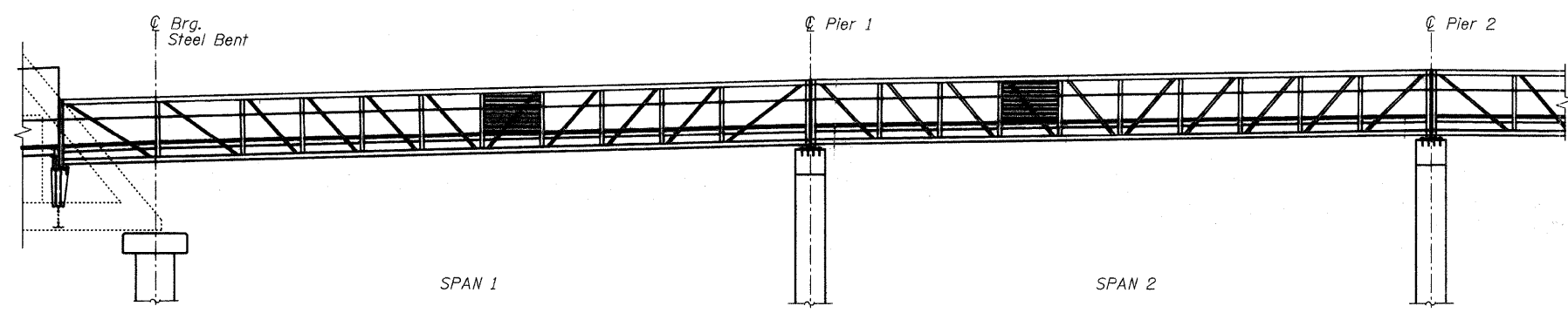


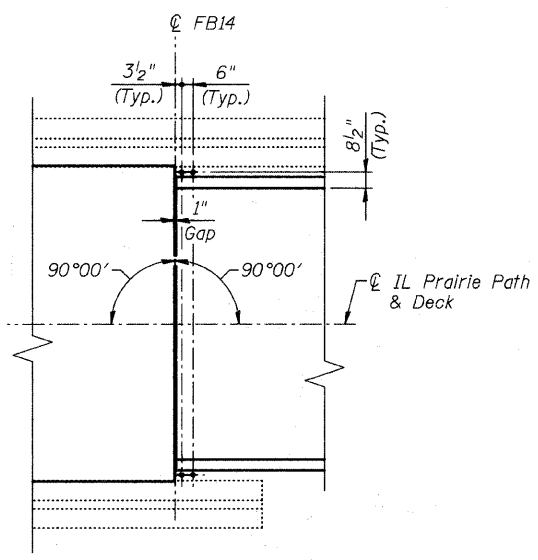
FISCAL YEAR	COUNTY	COUNTY HIGHWAY	TOTAL SHEETS	SHEET NO.
2007	DUPAGE	.	241	146
CONTRACT NUMBER 83908				
SECTION 97-0084-00-BR				
• FAU 3549/ FAU 1432				



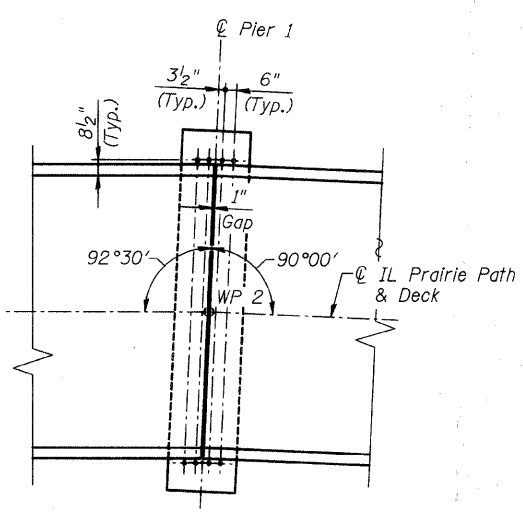
PLAN - SPANS 1 & 2



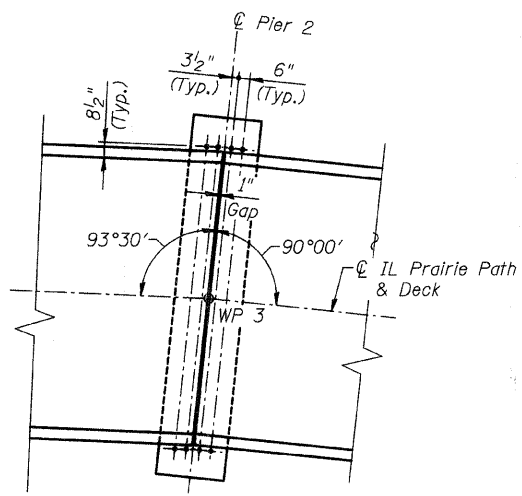
ELEVATION



DETAIL AT FB14



DETAIL AT PIER 1



DETAIL AT PIER 2

NOTES:

1. Final location of Bearing Anchor Bolts to be specified by the Superstructure Manufacture.
2. All new steel shall be painted within 15'-0" of each support pier or abutment in accordance with the Special Provisions.

CITY OF WHEATON		
ILLINOIS PRAIRIE PATH BRIDGE OVER UNION PACIFIC RAILROAD, FRONT STREET AND WESLEY STREET APPROACH SPANS 1 & 2 PLAN & ELEVATION		
DRAWN	JM/PES/TV	SHEET NO.
CHECKED	VEVS	IPP-9
APPROVED	BSK	
DATE	06/04/2008	
SCALE	NONE	

HDR
HDR Engineering, Inc.

I:\PP-9\PP-9-SPANS-1&2.DWG 6/27/2008 3:28:03 PM