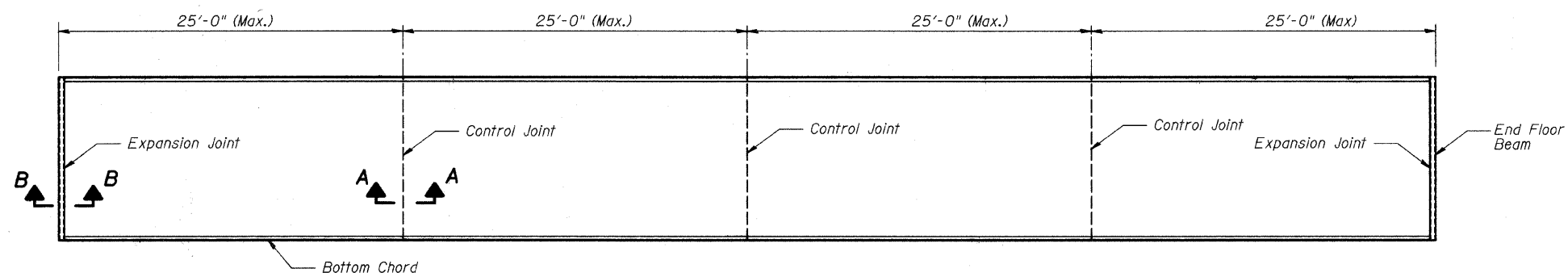


**DECK PLAN - REINFORCING**



**DECK PLAN**

**BILL OF MATERIAL**

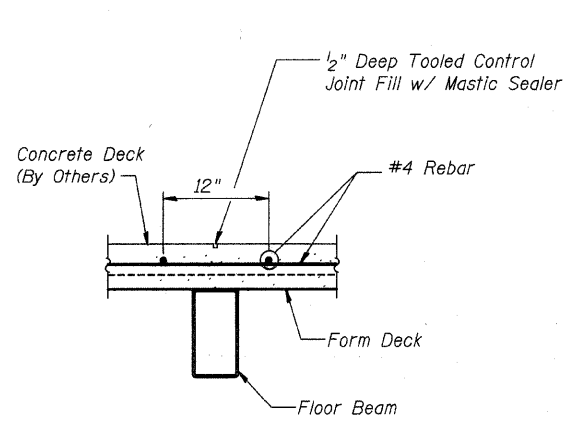
Bar	No.	Size	Length	Shape
a(E)	311	#4	11'-8"	—
b(E)		#4	26'-0"	—
b1(E)		#4	26'-8"	—
u(E)		#4	13'-0"	—
Pedestrian Truss Superstructure			Sq. Ft.	4,080

The concrete deck and reinforcement bars are included in the cost of Pedestrian Truss Superstructure.

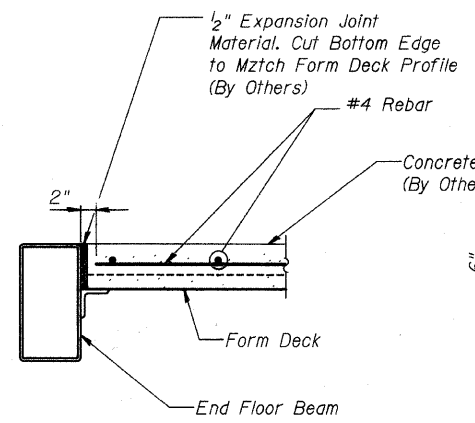
**NOTE:**

If splice is required in Longitudinal Rebars, 1'-8" min. lap required. locate bottom rebar splice over floor beam.

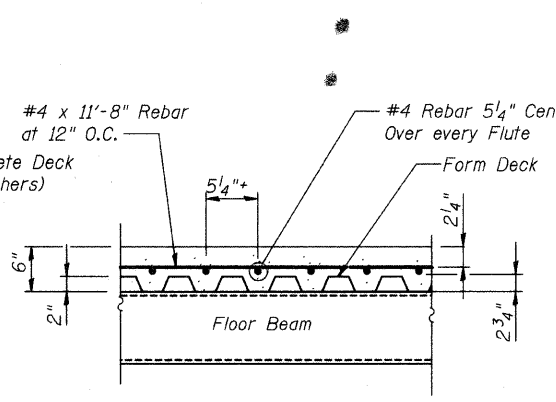
Span	L	N	M
1	73'-4 1/4"	74	1
2	61'-2"	62	1
3	75'-2"	76	1
4	98'-8"	99	2



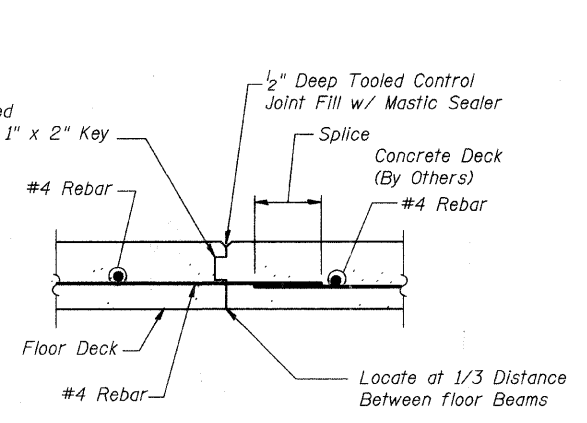
**SECTION A-A - CONTROL JOINT**



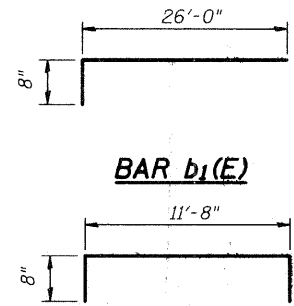
**SECTION B-B - EXPANSION JOINT**  
Locate at Each End Floor Beam



**SECTION C-C TYP. SLAB REINFORCEMENT DETAILS**  
Place rebar over depressions in form deck.



**CONSTRUCTION JOINT DETAIL**  
(As Required)



**BAR b1(E)**

**BAR u(E)**

CITY OF WHEATON		
ILLINOIS PRAIRIE PATH BRIDGE OVER UNION PACIFIC RAILROAD, FRONT STREET AND WESLEY STREET		
APPROACH SPANS DETAILS		
DRAWN	JM/PES/TV	SHEET NO.
CHECKED	VEVS	<b>IPP-12</b>
APPROVED	BSK	
DATE	06/04/2008	
SCALE	NONE	

