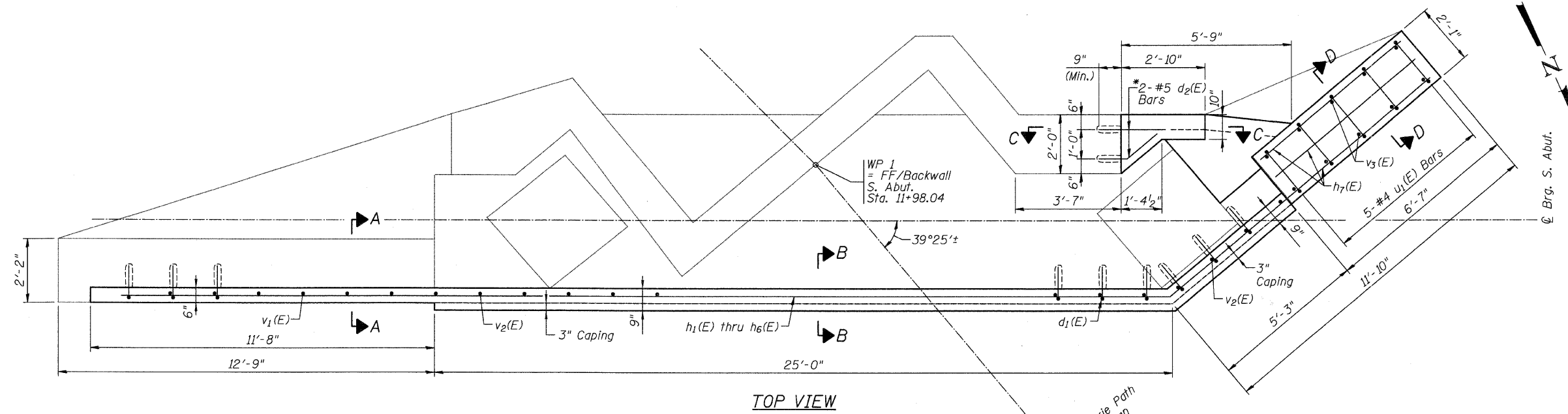
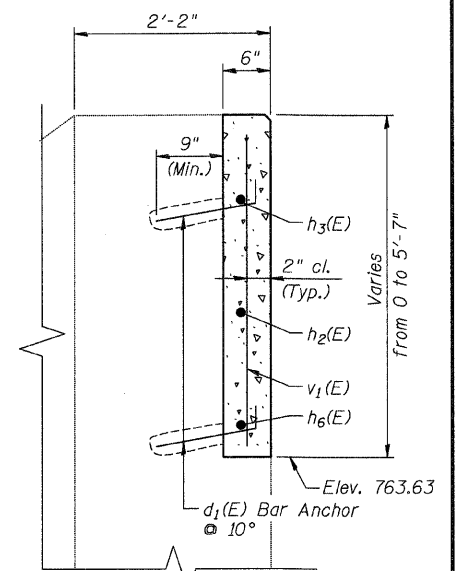


FISCAL YEAR	COUNTY	COUNTY HIGHWAY	TOTAL SHEETS	SHEET NO.
2007	DUPAGE	*	241	151
CONTRACT NUMBER 83908				
SECTION 97-00084-00-BR				

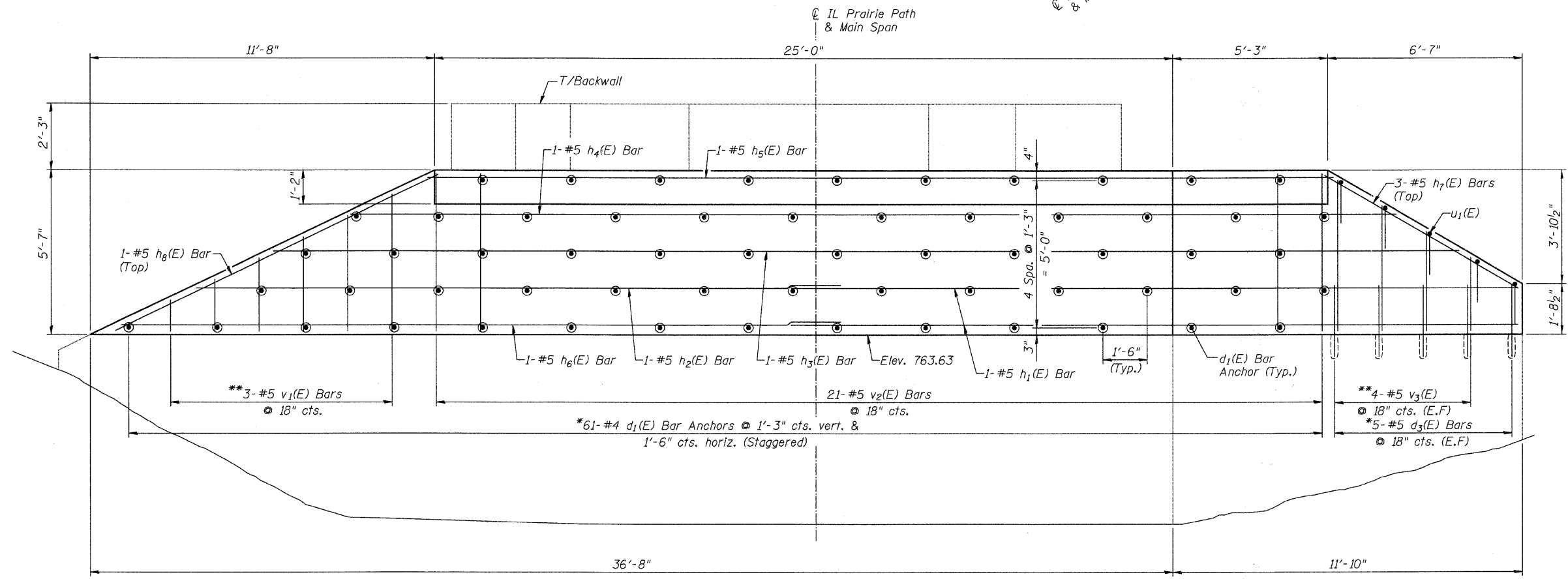
• FAU 3549/ FAU 1432



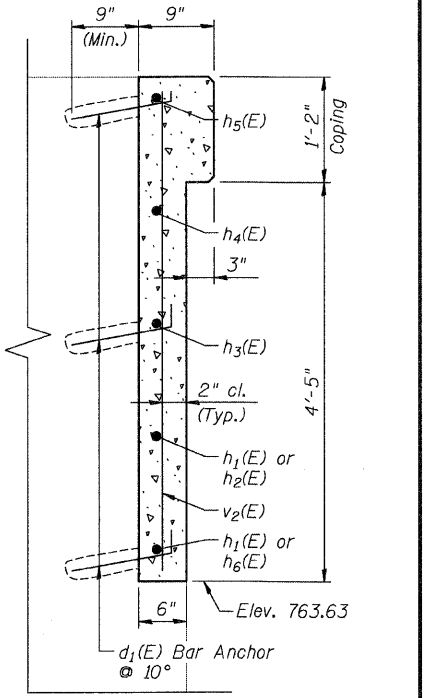
TOP VIEW



SECTION A-A



SOUTH ABUTMENT
North Elevation (Unfolded)



SECTION B-B

* Epoxy grout in 9" min. drilled 1" φ holes according to Article 584 of the Standard Specifications. Cost included with Concrete Structure.
** See Field Cutting Diagrams on Sht. IPP-15.

MIN. BAR LAP
#5 - 1'-8"

- NOTES:
1. For Sections C-C & D-D, See Sheet IPP-15.
 2. For Bill of Material, See Sheet IPP-15.

CITY OF WHEATON
ILLINOIS PRAIRIE PATH BRIDGE
OVER UNION PACIFIC RAILROAD,
FRONT STREET AND WESLEY STREET
SOUTH ABUTMENT
REPAIR DETAILS I

DRAWN	JM/PES/TV	SHEET NO.
CHECKED	VEVS	IPP-14
APPROVED	BSK	
DATE	06/04/2008	
SCALE	NONE	

HDR
HDR Engineering, Inc.