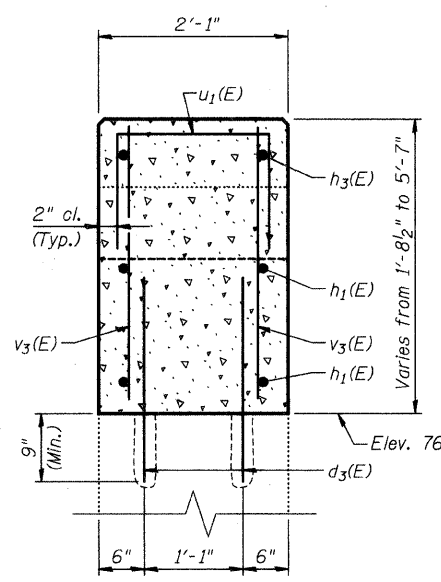
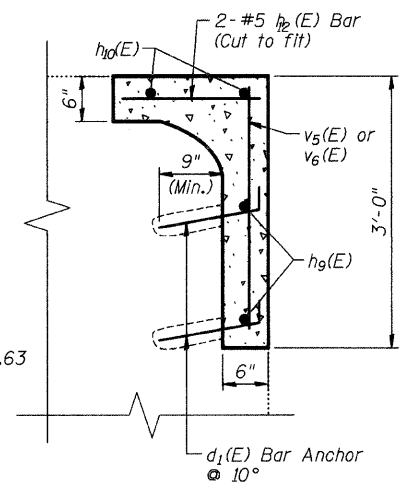


SECTION C-C

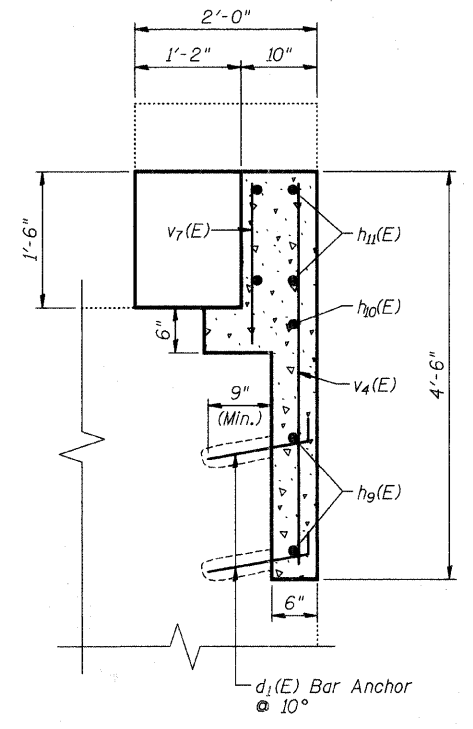
* Epoxy grout in 9" min. drilled 1" ϕ holes according to Article 584 of the Standard Specifications. Cost included with Concrete Structure.



SECTION D-D



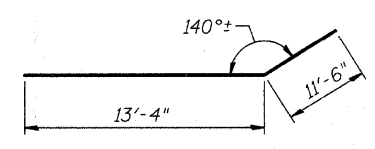
SECTION E-E



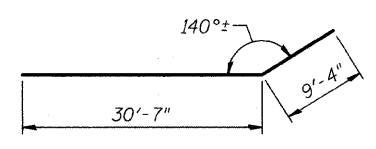
SECTION F-F

BILL OF MATERIAL

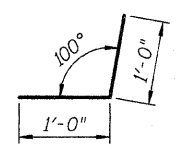
Bar	No.	Size	Length	Shape
d ₁ (E)	71	#4	2'-0"	—
d ₂ (E)	4	#5	2'-3"	—
d ₃ (E)	10	#5	2'-10"	—
h ₁ (E)	2	#5	24'-10"	—
h ₂ (E)	1	#5	21'-10"	—
h ₃ (E)	1	#5	39'-11"	—
h ₄ (E)	1	#5	35'-3"	—
h ₅ (E)	1	#5	30'-6"	—
h ₆ (E)	1	#5	24'-6"	—
h ₇ (E)	3	#5	7'-7"	—
h ₈ (E)	1	#5	12'-1"	—
h ₉ (E)	2	#5	5'-5"	—
h ₁₀ (E)	2	#5	5'-3"	—
h ₁₁ (E)	4	#5	2'-6"	—
h ₁₂ (E)	2	#5	2'-0"	—
u ₁ (E)	5	#4	5'-1"	□
v ₁ (E)	3	#5	5'-7"	—
v ₂ (E)	21	#5	5'-3"	—
v ₃ (E)	4	#5	7'-6"	—
v ₄ (E)	3	#5	3'-2"	—
v ₅ (E)	2	#5	2'-8"	—
v ₆ (E)	1	#5	2'-6"	—
v ₇ (E)	3	#5	1'-8"	—
Earth Excavation			Cu. Yd.	2
Porous Granular Embankment			Cu. Yd.	2
Concrete Structures			Cu. Yd.	6.5
Reinforcement Bars, Epoxy Coated			Pound	620



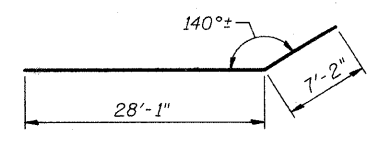
BAR h₁(E)



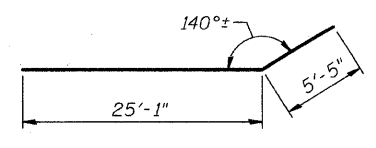
BAR h₃(E)



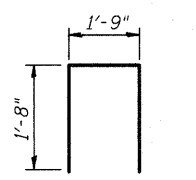
BAR d₁(E)



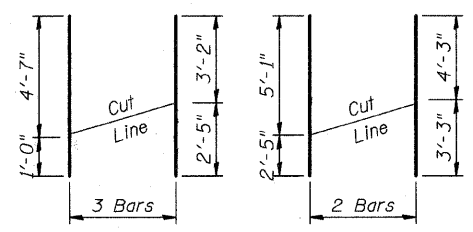
BAR h₄(E)



BAR h₅(E)



BAR u₁(E)



BARS v₁(E) BARS v₃(E)

FIELD CUTTING DIAGRAMS

Order bars full length. Cut to fit as shown and use remainder in opposite face or end.

CITY OF WHEATON

ILLINOIS PRAIRIE PATH BRIDGE
OVER UNION PACIFIC RAILROAD,
FRONT STREET AND WESLEY STREET
**SOUTH ABUTMENT
REPAIR DETAILS II**

DRAWN	JM/PES/TV	SHEET NO.
CHECKED	VEVS	IPP-15
APPROVED	BSK	
DATE	06/04/2008	
SCALE	NONE	

