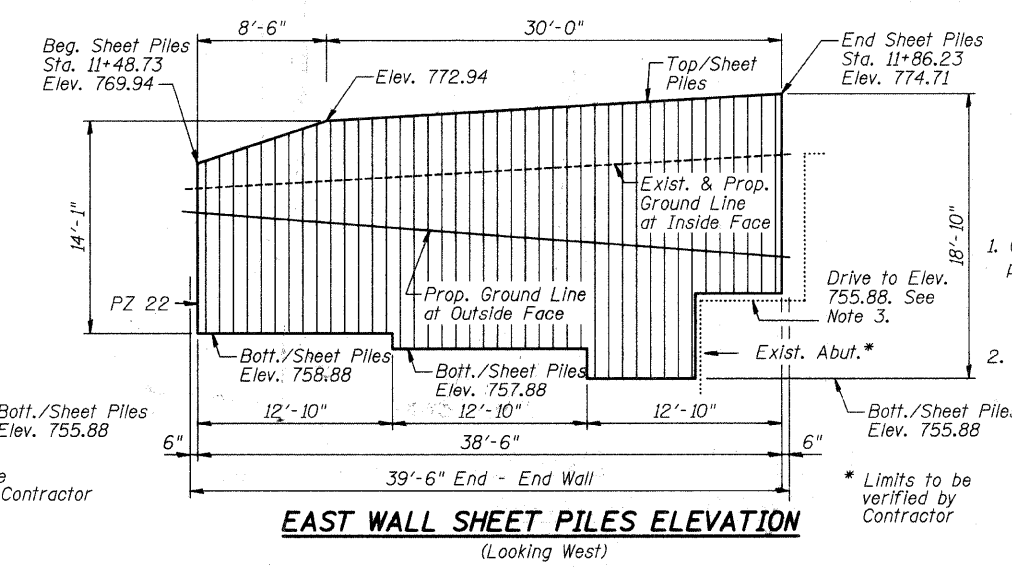
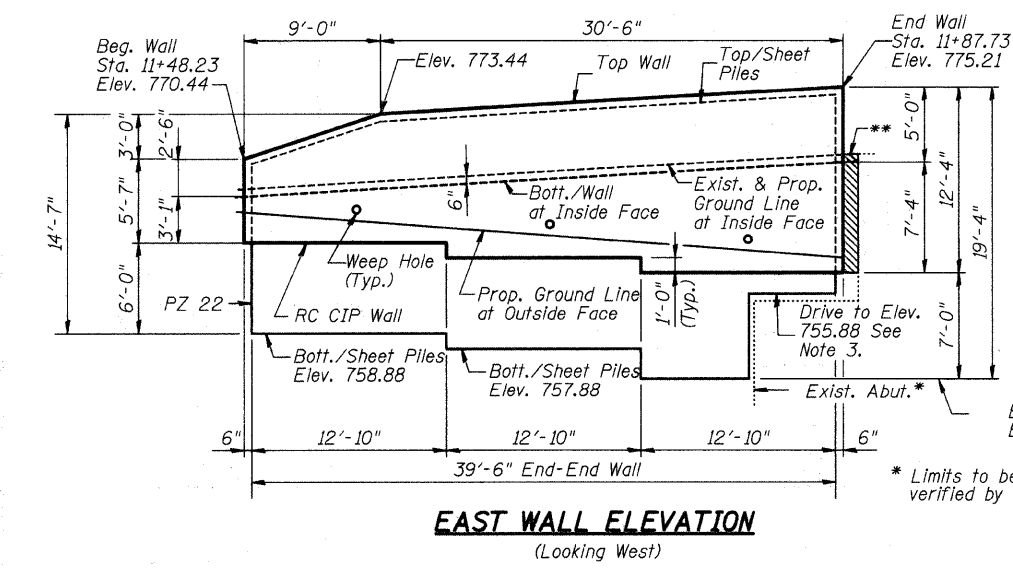
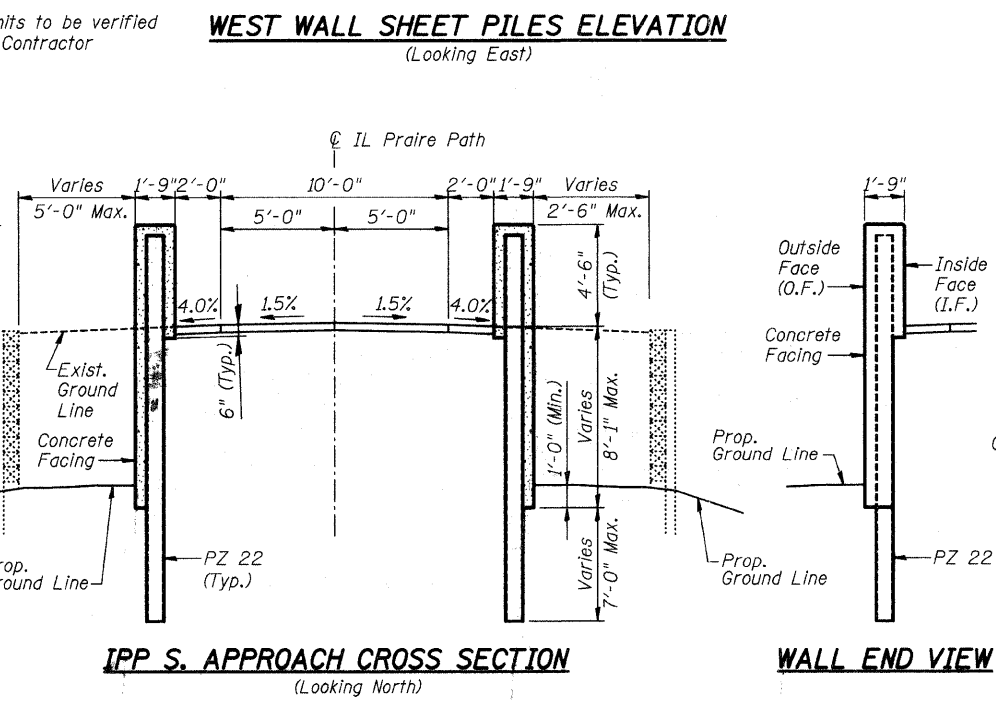
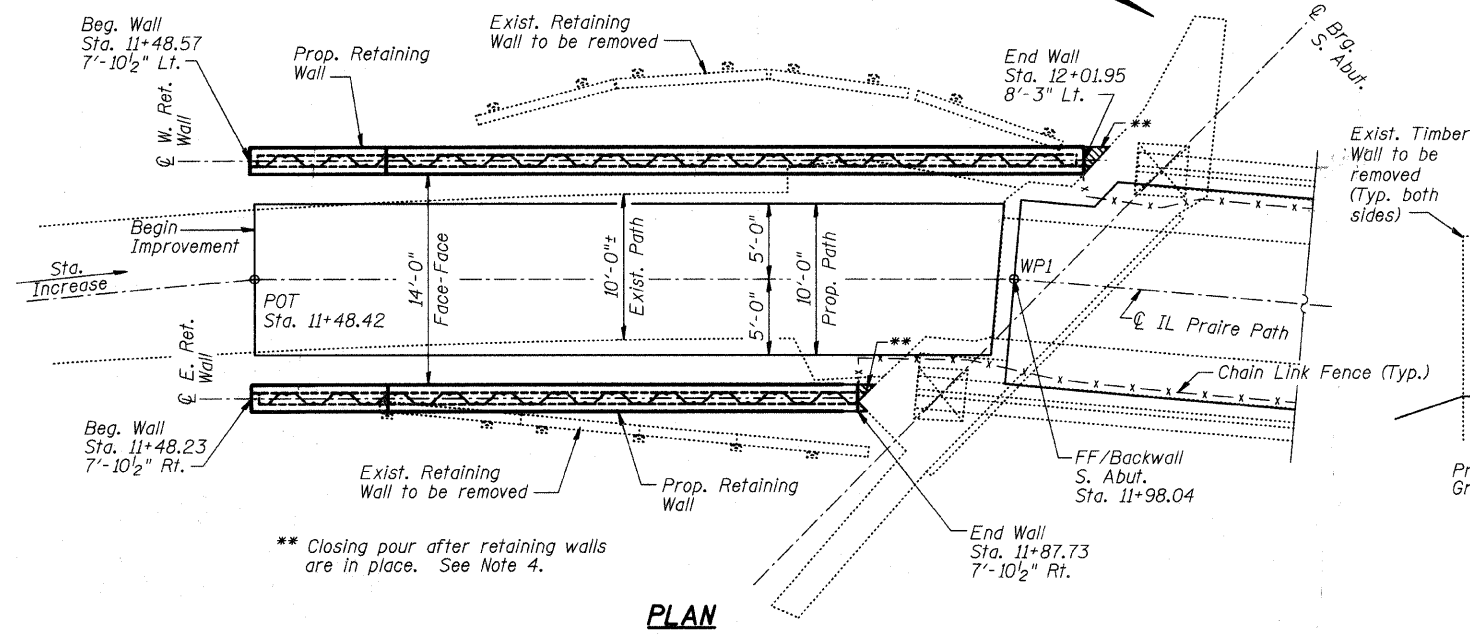
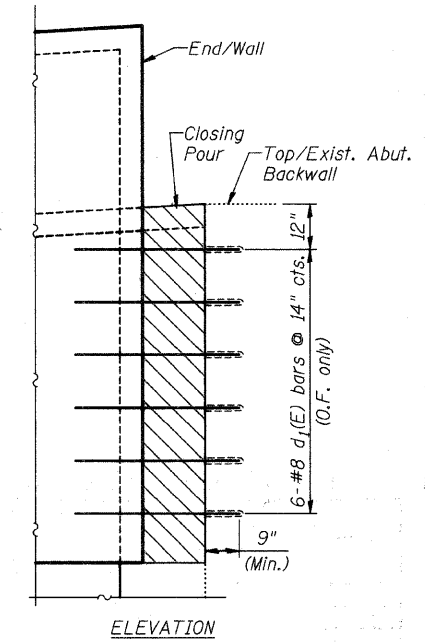
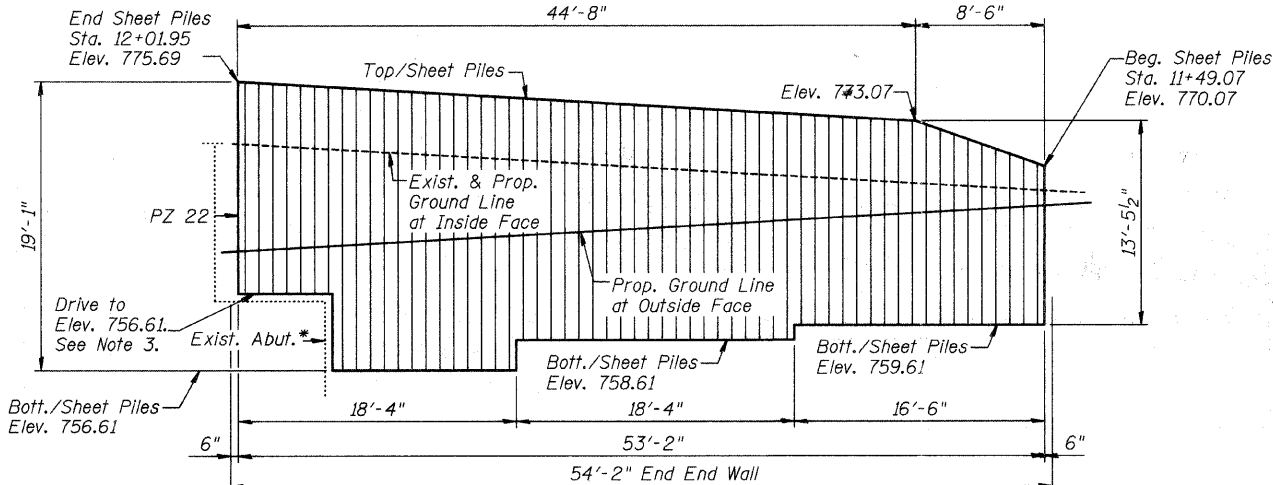
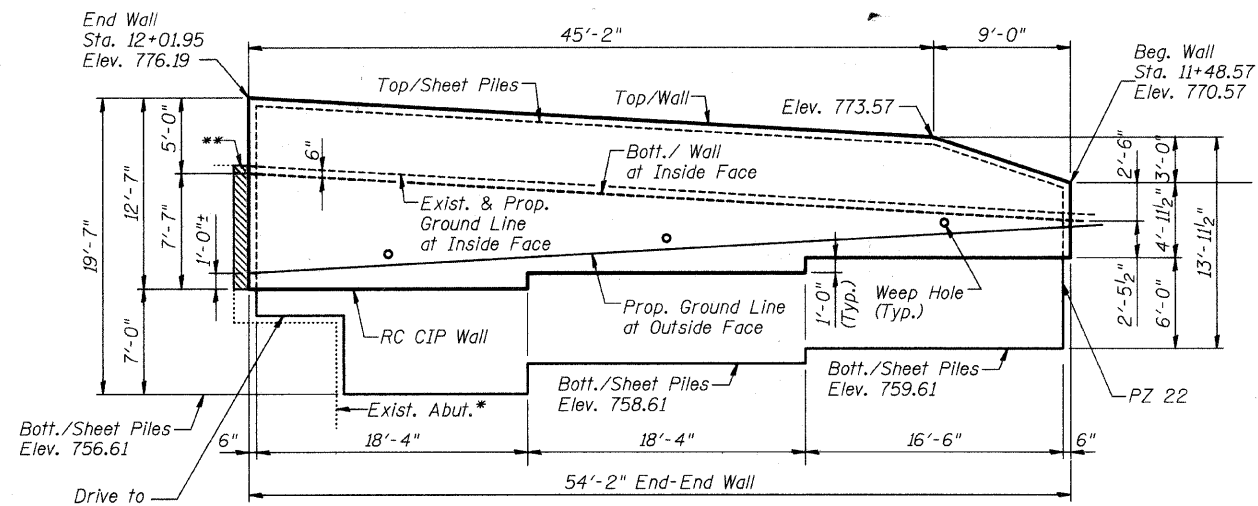


FISCAL YEAR	COUNTY	COUNTY HIGHWAY	TOTAL SHEETS	SHEET NO.
2007	DUPAGE		241	153

CONTRACT NUMBER 83908  
SECTION 97-00084-00-BR  
• FAU 3549/ FAU 1432



**CONCRETE FACING ALTERNATES:**

1. Cast with voids between sheet pile cells as shown.
- OR
2. Cast solid as 1'-9" & 1'-3" sections.

**Notes:**

1. See Sheet IPP-17 for reinforcement details.
2. See Sheet IPP-17 for Bill of Material.
3. Any sheets not reaching their required embedment due to the abutment footing shall be attached to exist. abutment. The connection shall be approved by the Engineer.
4. Retaining walls shall be connected to Exist. Abutment. Drill & epoxy grout anchors per details on this sheet.

CITY OF WHEATON

ILLINOIS PRAIRE PATH BRIDGE OVER UNION PACIFIC RAILROAD, FRONT STREET AND WESLEY STREET

SOUTH APPROACH RETAINING WALLS DETAILS I

DRAWN	JM/PES/TV	SHEET NO.
CHECKED	VEVS	IPP-16
APPROVED	BSK	
DATE	06/04/2008	
SCALE	NONE	

HDR Engineering, Inc.